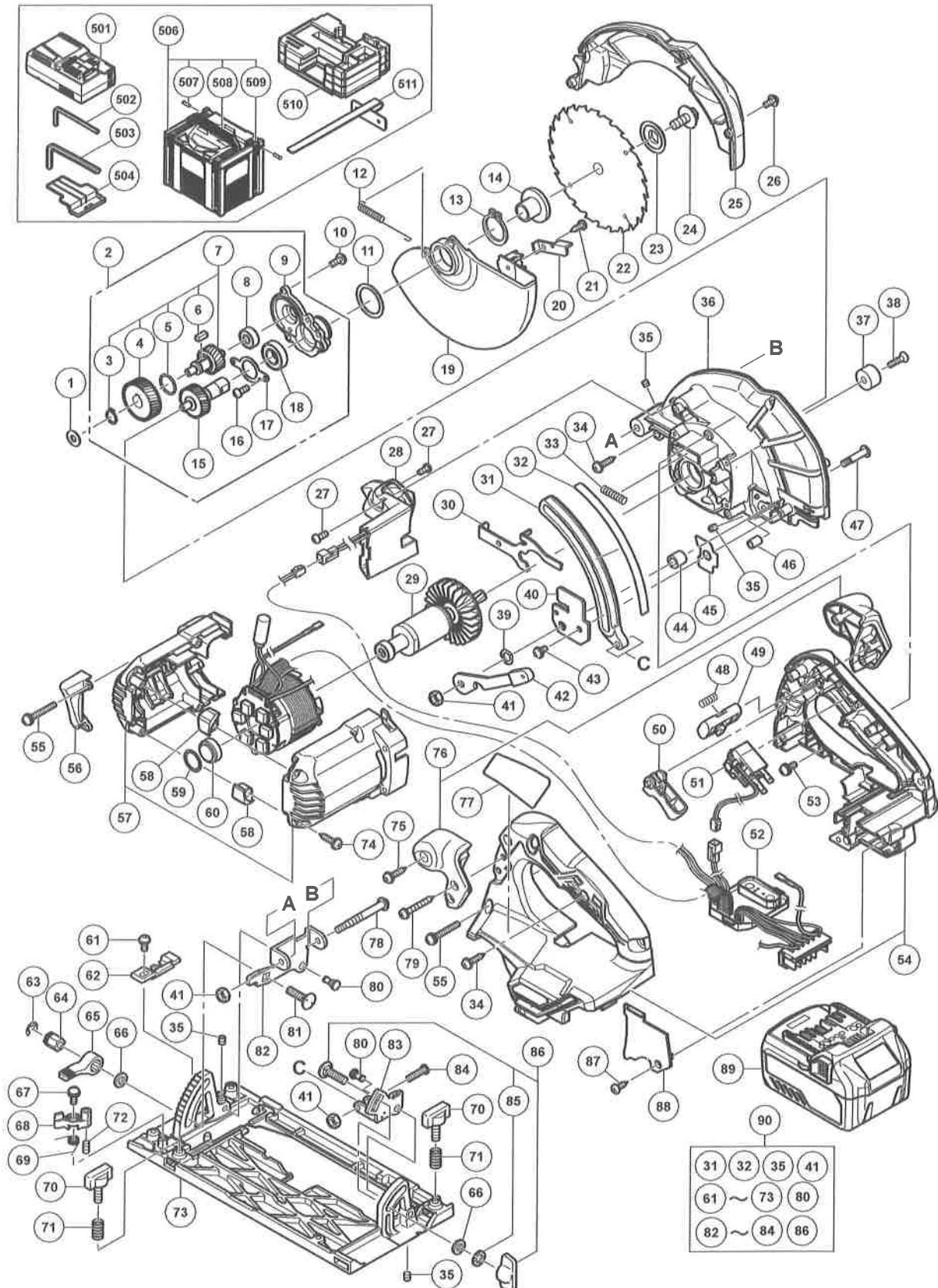


ELECTRIC TOOL PARTS LIST

CORDLESS CIRCULAR SAW Model C 3606DA

2017-11-15
(E1)



PARTS

C 3606DA

ITEM NO.	CODE NO.	DESCRIPTION	NO. USED	REMARKS
1	329975	WASHER (A)	1	
2	338920	BEARING HOLDER ASS'Y	1	INCLUD.7-9,15-18
3	316487	RETAINING RING FOR D11 SHAFT	1	
4	338925	FIRST GEAR	1	
5	319567	O-RING (S-15)	1	
6	930511	FEATHER KEY 4 X 4 X 10	1	
7	338924	SECOND SHAFT ASS'Y	1	INCLUD.3-6
8	606ZZM	BALL BEARING 606VV	1	
9	338921	BEARING HOLDER	1	
10	951039	MACHINE SCREW (W/SP. WASHER) M4 X 12	3	
11	339257	WASHER	1	
12	373078	RETURN SPRING	1	
13	939548	RETAINING RING FOR D22 SHAFT (10 PCS.)	1	
14	338915	WASHER (A)	1	
15	338923	SPINDLE GEAR SET	1	
16	949203	MACHINE SCREW M3 X 8 (10 PCS.)	2	
17	338922	BEARING COVER	1	
18	6901VV	BALL BEARING 6901VV	1	
19	338905	LOWER GUARD	1	
20	338927	KNOB	1	
21	302090	TAPPING SCREW D4 X 10 (BLACK)	1	
22	338935	TCT SAW BLADE 165MM-D20 HOLE-NT24	1	
23	338916	WASHER (B)	1	
24	338917	HEX FLANGE BOLT	1	
25	372880	SAW COVER (GREEN)	1	
26	333781	MACHINE SCREW (W/WASHER) M4 X 12 (BLACK)	1	
27	323211	MACHINE SCREW M4 X 8 (BLACK)	2	
28	339218	LED	1	
29	361078	ROTOR (C) ASS'Y	1	
30	338918	LOCK LEVER	1	
31	371943	LINK	1	
32	339258	GAUGE PLATE (A)	1	
33	334225	SPRING	1	
34	307811	TAPPING SCREW (W/FLANGE) D4 X 16 (BLACK)	5	
35	319541	SEAL LOCK HEX. SOCKET SET SCREW M5 X 6	4	
36	338907	GEAR COVER	1	
37	310842	CUSHION	1	
38	949793	FLAT HD. SCREW M5 X 20 (10 PCS.)	1	
39	334242	WAVE WASHER 8	1	
40	371946	COVER PLATE	1	
41	308387	U-NUT M5	3	
42	338930	LEVER (A)	1	
43	372219	SEAL LOCK SCREW (W/SP. WASHER) M4	1	
44	333681	CAM	1	
45	371947	PLATE	1	
46	338932	LOCK SLEEVE	1	
47	333680	CAM SHAFT	1	
48	336650	SPRING	1	
49	338901	KNOB	1	
50	338899	TRIGGER	1	

PARTS

C 3606DA

ITEM NO.	CODE NO.	DESCRIPTION	NO. USED	REMARKS
51	371907	SWITCH	1	
52	340992	STATOR FET PCB ASS'Y	1	INCLUD.28
53	305691	MACHINE SCREW (W/WASHERS) M4 X 14 (BLACK)	1	
54	371908	HANDLE SET (GREEN)	1	
55	334141	MACHINE SCREW (W/WASHERS) M4 X 35 (BLACK)	6	
56	338919	FLOW GUIDE	1	
57	338902	HOUSING SET	1	
58	336554	CUSHION	2	
59	372734	WASHER (A)	1	
60	338928	RUBBER BUSHING	1	
61	315500	MACHINE SCREW (W/WASHER) M4 X 8 (BLACK)	1	
62	338913	GUIDE PIECE	1	
63	942827	RETAINING RING (E-TYPE) FOR D8 SHAFT	1	
64	333660	SPECIAL NUT M6	1	
65	333659	CLAMP LEVER	1	
66	949425	WASHER M6 (10 PCS.)	2	
67	317200	MACHINE SCREW (W/WASHERS) M4 X 8 (BLACK)	1	
68	333657	STOPPER LEVER	1	
69	339259	SPRING (B)	1	
70	307898	WING BOLT M6 X 18	2	
71	324876	SPRING	2	
72	334142	SEAL LOCK HEX. SOCKET SET SCREW M5 X 10	1	
73	371941	BASE	1	
74	301653	TAPPING SCREW (W/FLANGE) D4 X 20 (BLACK)	4	
75	301653	TAPPING SCREW (W/FLANGE) D4 X 20 (BLACK)	1	
76	338934	SUB HANDLE	1	INCLUD.75
77		NAME PLATE	1	
78	339260	ADJUSTING SCREW (A)	1	
79	305490	TAPPING SCREW (W/FLANGE) D4 X 30 (BLACK)	2	
80	320163	STEP PIN D6 X 13	2	
81	314623	BOLT (SQUARE) M6 X 22	2	
82	338910	BEVEL PLATE	1	
83	371944	SUB LINK	1	
84	371945	SPECIAL SCREW	1	
85	948167	SUPER LOCK WASHER M6	1	
86	314620	BOLT ASS'Y (SQUARE) M6 X 22	1	INCLUD.85
87	334333	TAPPING SCREW D3 X 12 (BLACK)	1	
88	371909	HANDLE COVER (GREEN)	1	
89	371750	BATTERY BSL 36A18 (EUROPE,AUS,NZL)	2	INCLUD.504
90	371939	BASE ASS'Y	1	INCLUD.31,32,35,41,61-73,80,82-84,86

STANDARD ACCESSORIES

C 3606DA

ITEM NO.	CODE NO.	DESCRIPTION	NO. USED	REMARKS
501		CHARGER (MODEL UC 18YSL3)	1	
502	990666	HEX. BAR WRENCH 2.5MM	1	
503	944459	HEX. BAR WRENCH 5MM	1	
504	329897	BATTERY COVER	2	
506	337528	CASE ASS'Y (STACKABLE 4)	1	INCLUD.507-509
507	336474	HINGE	2	
508	336473	HANDLE	1	
509	336472	LATCH	4	
510	373138	BOTTOM CUSHION	1	
* 511	302756	GUIDE	1	FOR EUROPE

OPTIONAL ACCESSORIES

ITEM NO.	CODE NO.	DESCRIPTION	NO. USED	REMARKS
601	316161	LONG GUIDE (250MM)	1	
602	316104	LONG GUIDE (650MM)	1	
603	339383	DUCT ADAPTER	1	
604	962175	GUIDE (A) ASS'Y	1	INCLUD.605,606
605	307898	WING BOLT M6 X 18	1	
606	941056	SPRING	1	
607	339188	FLUORINE PLATE ASS'Y	1	INCLUD.608
608	321996	SPECIAL BOLT	4	