

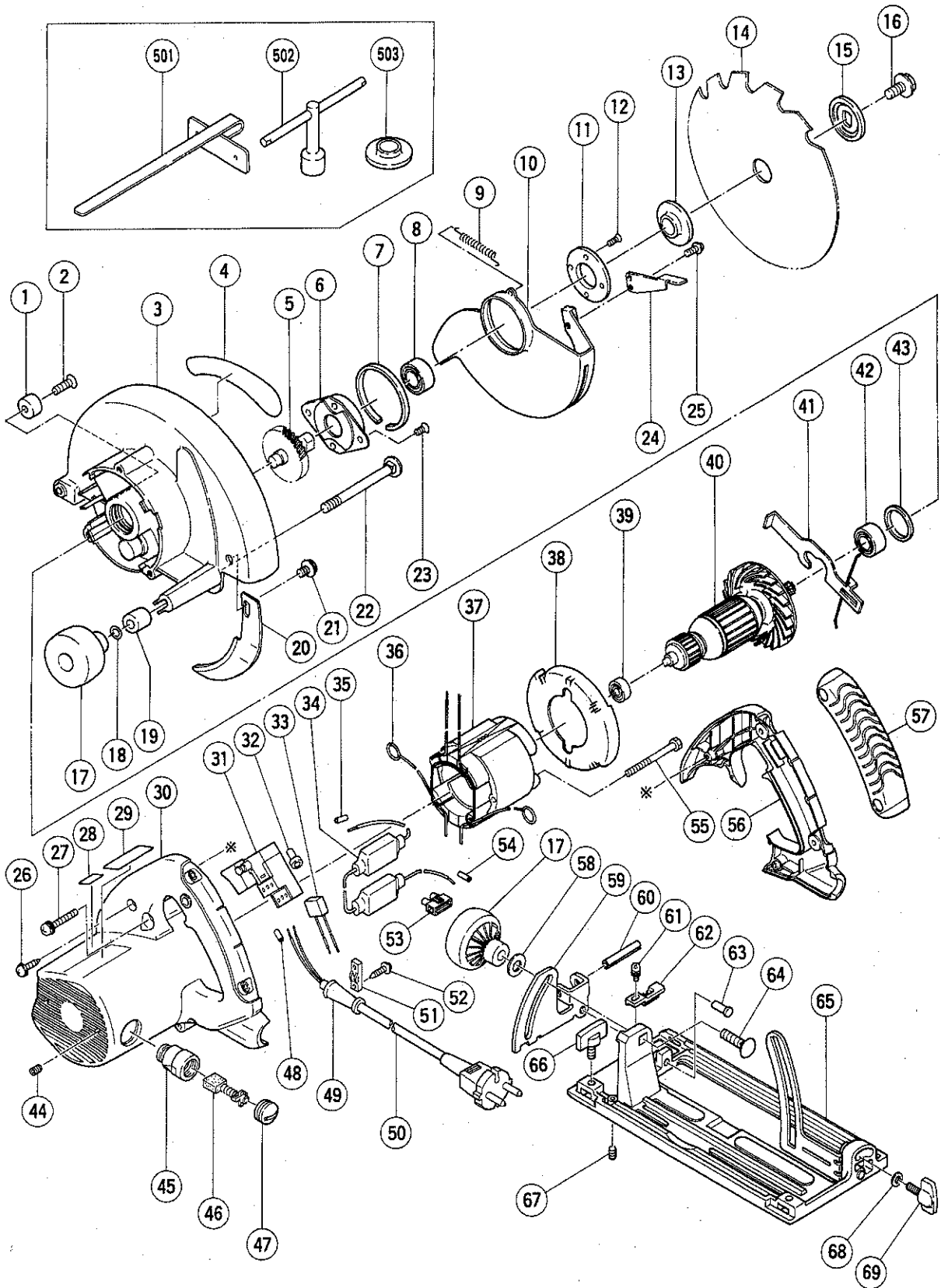
HITACHI

LIST NO. 0585

ELECTRIC TOOL PARTS LIST

■ CIRCULAR SAW
Model C 6BU

1998·7·20
(E1)



PARTS

C 6BU

ITEM NO.	CODE NO.	DESCRIPTION	NO. USED	REMARKS
1	961-729	CUSHION	1	
2	949-794	FLAT HD. SCREW M6X20 (10 PCS.)	1	
3	302-742	GEAR COVER ASS'Y	1	INCLUD.1,2,43
4		HITACHI LABEL	1	
5	302-449	SPINDLE GEAR	1	
6	302-433	BEARING HOLDER	1	
7	961-807	BUSHING	1	
8	600-3VV	BALL BEARING 6003VVCMP2S	1	
9	302-463	RETURN SPRING	1	
10	302-461	SAFETY COVER	1	
11	302-435	BEARING COVER	1	
12	990-430	SEAL LOCK FLAT HD. SCREW M4X10	2	
* 13	302-476	WASHER (A)	1	FOR FRG
* 13	302-443	WASHER (A)	1	FOR-FRG,FRA
* 14	302-409	TCT SAW BLADE 165MM-D30 HOLE-NT14	1	
* 14	302-407	TCT SAW BLADE 165MM-D16 HOLE-NT14	1	FOR FRG,FRA
15	302-423	WASHER (B)	1	
16	302-427	BOLT (W/FLANGE) M8X15.5	1	
17	302-458	KNOB	2	
18	676-531	O-RING (P-7)	1	
19	303-801	SLEEVE	1	
20	303-838	RIVING KNIFE	1	
21	302-468	BOLT (W/FLANGE) M8X10 (BLACK)	1	
22	316-444	DIAGONAL BOLT M8X105	1	
23	992-013	SEAL LOCK FLAT HD. SCREW M5X14	2	
24	302-464	KNOB	1	
25	304-043	MACHINE SCREW (W/WASHERS) M4X10 (BLACK)	1	
26	301-653	TAPPING SCREW (W/FLANGE) D4X20 (BLACK)	4	
27	302-434	MACHINE SCREW (W/WASHERS) M5X45 (BLACK)	3	
28		LABEL(CE-MARK)	1	
29		NAME PLATE	1	
30	316-447	HOUSING ASS'Y	1	INCLUD.44,45
31	316-445	SWITCH (B) (2P PILLER TYPE)W/SAFETY LOCK	1	
32	959-141	CONNECTOR 50092 (10 PCS.)	1	
33	930-039	NOISE SUPPRESSOR	1	
34	316-446	RESISTOR	1	
35	981-373	TUBE (D)	3	
36	930-703	BRUSH TERMINAL	2	
37	340-424E	STATOR ASS'Y 230V	1	INCLUD.36
38	302-454	FAN GUIDE	1	
39	608-VVM	BALL BEARING 608VVMC2EPS2L	1	
40	360-479E	ARMATURE 230V	1	
41	302-453	LOCK LEVER	1	
42	600-1VV	BALL BEARING 6001VVCMP2L	1	
43	958-130	RUBBER RING	1	
44	938-477	HEX. SOCKET SET SCREW M5X8	2	
45	960-685	BRUSH HOLDER	2	
46	999-056	CARBON BRUSH (1 PAIR)	2	
47	945-161	BRUSH CAP	2	
48	981-373	TUBE (D)	1	
* 49	953-327	CORD ARMOR D8.8	1	

* : ALTERNATIVE PARTS

7 - 98

PARTS

C 6BU

ITEM NO.	CODE NO.	DESCRIPTION	NO. USED	REMARKS
* 49	938-051	CORD ARMOR D10.1	1	
* 50	500-234Z	CORD	1	(CORD ARMOR D8.8)
* 50	500-435Z	CORD	1	(CORD ARMOR D8.8) FOR GBR
* 50	500-248Z	CORD	1	(CORD ARMOR D10.1) FOR SUI
51	937-631	CORD CLIP	1	
52	984-750	TAPPING SCREW (W/FLANGE) D4X16	2	
53	938-307	PILLAR TERMINAL	1	
54	981-373	TUBE (D)	1	
55	953-121	HEX. HD. TAPPING SCREW D5X50	2	
56	316-441	HANDLE COVER	1	
57	316-442	GRIP COVER	1	
58	949-433	BOLT WASHER M8 (10 PCS.)	1	
59	308-479	BEVEL PLATE	1	
60	949-686	ROLL PIN D6X40 (10 PCS.)	1	
61	976-815	MACHINE SCREW (W/WASHERS) M4X8	1	
62	316-246	GUIDE PIECE	1	
63	308-480	RIVET D6X17	2	
64	302-457	BOLT (SQUARE) M8X30	1	
65	316-443	BASE ASS'Y	1	INCLUD.17,58,59,61-64,68,69
66	301-806	WING BOLT M6X15	1	
67	302-469	SLOTTED HD. SET SCREW (SEAL LOCK) M6X6	1	
68	949-425	WASHER M6 (10 PCS.)	1	
69	302-459	WING BOLT M6X17	1	

STANDARD ACCESSORIES

C 6BU

ITEM NO.	CODE NO.	DESCRIPTION	NO. USED	REMARKS	
501	302-756	GUIDE	1		
502	302-478	BOX WRENCH 13MM	1		
503	302-476	WASHER (A)	1	FOR FRA	

OPTIONAL ACCESSORIES

ITEM NO.	CODE NO.	DESCRIPTION	NO. USED	REMARKS	
601	302-981	DUST COLLECTOR SET (D)	1		

* : ALTERNATIVE PARTS