

HITACHI

LIST NO. 0586

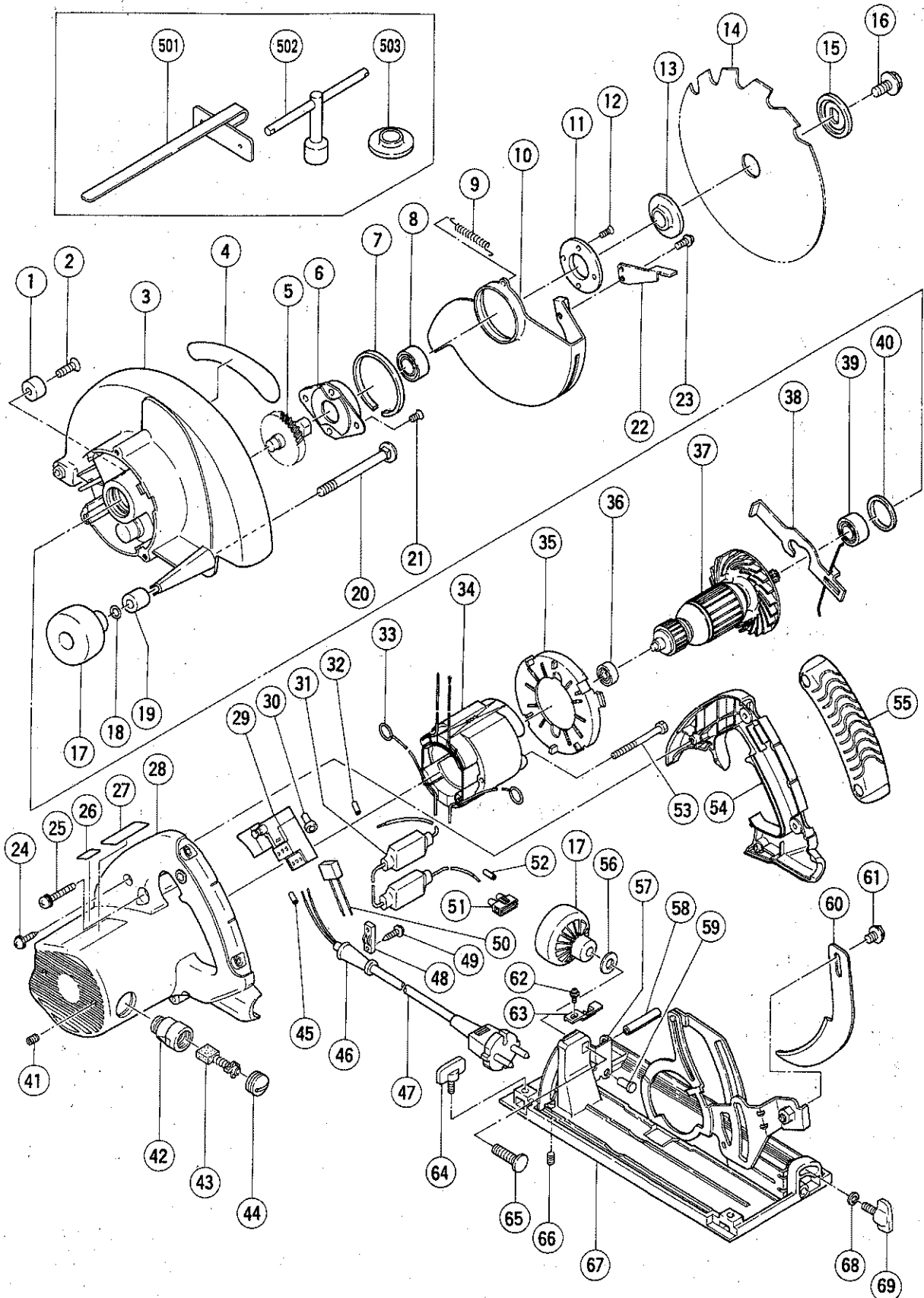
ELECTRIC TOOL PARTS LIST

■ CIRCULAR SAW

1998.7.20

Model C 7BU

(E1)



PARTS

C 7BU

ITEM NO.	CODE NO.	DESCRIPTION	NO. USED	REMARKS	
1	961-729	CUSHION	1		
2	949-794	FLAT HD. SCREW M6X20 (10 PCS.)	1		
3	302-993	GEAR COVER ASS'Y	1	INCLUD.1,2,40	
4		HITACHI LABEL	1		
5	302-988	SPINDLE GEAR	1		
6	302-433	BEARING HOLDER	1		
7	961-807	BUSHING	1		
8	600-3VV	BALL BEARING 6003VVCMP2S	1		
9	303-512	RETURN SPRING	1		
10	302-991	SAFETY COVER	1		
11	302-435	BEARING COVER	1		
12	990-430	SEAL LOCK FLAT HD. SCREW M4X10	2		
*	13	302-476	WASHER (A)	1	
*	13	302-443	WASHER (A)	1	FOR FRA
*	14	302-412	TCT SAW BLADE 185MM-D30 HOLE-NT18	1	
*	14	302-410	TCT SAW BLADE 185MM-D16 HOLE-NT18	1	FOR FRA
	15	302-423	WASHER (B)	1	
	16	302-427	BOLT (W/FLANGE) M8X15.5	1	
	17	302-458	KNOB	2	
	18	676-531	O-RING (P-7)	1	
	19	303-801	SLEEVE	1	
	20	316-444	DIAGONAL BOLT M8X105	1	
	21	992-013	SEAL LOCK FLAT HD. SCREW M5X14	2	
	22	302-464	KNOB	1	
	23	304-043	MACHINE SCREW (W/WASHERS) M4X10 (BLACK)	1	
	24	301-653	TAPPING SCREW (W/FLANGE) D4X20 (BLACK)	4	
	25	302-434	MACHINE SCREW (W/WASHERS) M5X45 (BLACK)	3	
	26		LABEL (CE-MARK)	1	
	27		NAME PLATE	1	
	28	316-447	HOUSING ASS'Y	1	INCLUD.41,42
	29	316-445	SWITCH (B) (2P PILLER TYPE)W/SAFETY LOCK	1	
	30	959-141	CONNECTOR 50092 (10 PCS.)	1	
	31	316-446	RESISTOR	1	
	32	981-373	TUBE (D)	3	
	33	930-703	BRUSH TERMINAL	2	
	34	340-425E	STATOR ASS'Y 230V	1	INCLUD.33
	35	302-989	FAN GUIDE	1	
	36	608-VVM	BALL BEARING 608VVMC2EPS2L	1	
	37	360-480E	ARMATURE 230V	1	
	38	302-453	LOCK LEVER	1	
	39	600-1VV	BALL BEARING 6001VVCMP2S	1	
	40	958-130	RUBBER RING	1	
	41	938-477	HEX. SOCKET SET SCREW M5X8	2	
	42	960-685	BRUSH HOLDER	2	
	43	999-056	CARBON BRUSH (1 PAIR)	2	
	44	945-161	BRUSH CAP	2	
	45	981-373	TUBE (D)	1	
*	46	953-327	CORD ARMOR D8.8	1	
*	46	938-051	CORD ARMOR D10.1	1	
*	47	500-234Z	CORD	1	(CORD ARMOR D8.8)
*	47	500-435Z	CORD	1	(CORD ARMOR D8.8) FOR GBR

* : ALTERNATIVE PARTS

7 - 98

STANDARD ACCESSORIES

C 7BU

ITEM NO.	CODE NO.	DESCRIPTION	NO. USED	REMARKS
501	302-756	GUIDE	1	
502	302-478	BOX WRENCH 13MM	1	
503	302-476	WASHER (A)	1	FOR FRA

OPTIONAL ACCESSORIES

ITEM NO.	CODE NO.	DESCRIPTION	NO. USED	REMARKS
601	302-981	DUST COLLECTOR SET (D)	1	

* : ALTERNATIVE PARTS

Printed in Japan 7 - 98
(980720 N)