

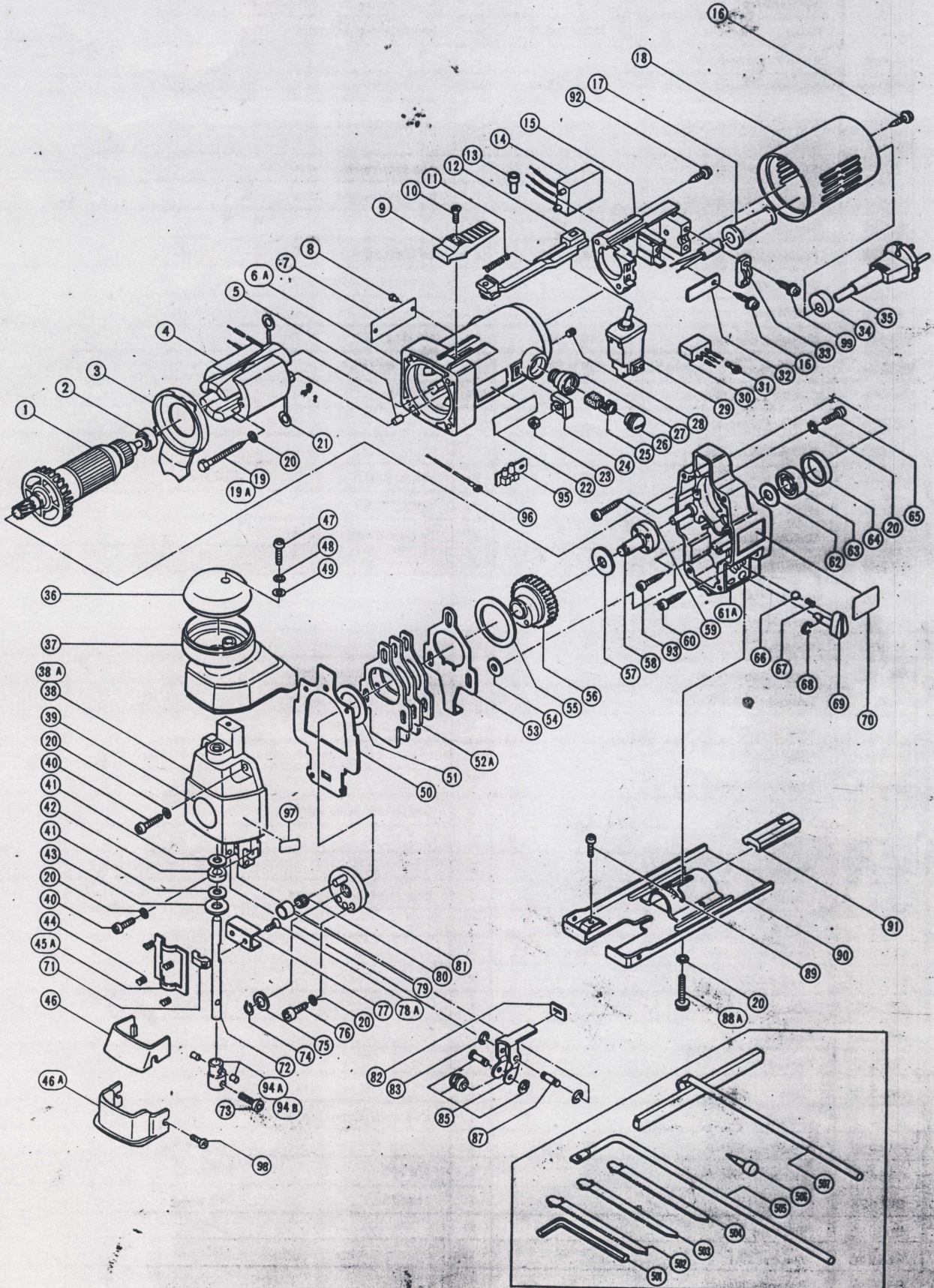
ELECTRIC TOOL PARTS LIST

■ JIG SAW

1987-11-30

Model CJ65VA

CJ65VA(E4)



PARTS

CJ65VA(E4)

Item No.	Code No.	Part Name	Q'ty	Remarks
1	—	Armature Ass'y	1	See alternative parts
2	939385	Ball Bearing (608VVC2)	1	
3	963374	Fan Guide	1	
4	—	Stator Ass'y	1	See alternative parts
5	931701	Bearing Lock	1	till 2, 1987
6A	963657	Housing Ass'y	1	includes 19A, 27, 28
7	—	Name Plate	1	
8	—	Rivet D2.5 x 2.8	2	See alternative parts
9	938312	Slide Knob (B)	1	
10	949323	Flat Hd. Screw M4 x 12	1	(10 pcs.)
11	963632	Spring (B)	1	
12	963631	Slide Bar	1	
13	—	Connector (50091)	1	See alternative parts
14	—	Control Circuit Ass'y	1	See alternative parts
15	963635	Switch Holder	1	
16	930446	Tapping Screw D4 x 16	2	w/Washer
17	—	Cord Armor	1	See alternative parts
18	963636	Tail Cover	1	
19	936502	Machine Screw M4 x 60	2	till 4, 1987
19A	963712	Hexagon Hd. Tapping Screw D4 x 65	2	since 5, 1987
20	949453	Spring Lock Washer	10	for M4 (10 pcs.)
21	930630	Brush Terminal	2	
22	950565	HITACHI Label	1	
23	949554	Nut M4	2	till 4, 1987 (10 pcs.)
24	963341	Nut Cover	2	till 4, 1987
25	—	Carbon Brush	2	See alternative parts
26	937847	Brush Cap	2	
27	937846	Brush Holder	2	
28	963383	Hexagon Socket Hd. Set Screw M4 x 8	2	
29	963633	Switch	1	
30	—	Noise Suppressor	1	See alternative parts
31	—	Terminal (50051)	1	See alternative parts
32	—	Swtich Plate	1	See alternative parts
33	960266	Cord Clip	1	
34	940928	Wrench Holder	1	
35	—	Cord	1	See alternative parts
36	963630Z	Handle Cap	1	
37	963629Z	Handle Knob	1	
38	—	Upper Cover Ass'y	1	See alternative parts
39	962994	Mark Plate	1	
40	949219	Machine Screw M4 x 16	4	(10 pcs.)
41	963356	Washer (C)	2	
42	963354	Felt (A)	1	
43	963355	Washer (D)	1	
44	963362	Spring	4	
45A	963361	Plate	1	
46	—	Chip Cover	1	See alternative parts
47	949239	Machine Screw M5 x 16	1	(10 pcs.)
48	949454	Spring Lock Washer	1	for M5 (10 pcs.)
49	949424	Washer	1	for M5 (10 pcs.)
50	963352	Packing	1	
51	963349	Washer (A)	1	
52A	963658	Balance Weight	1	

PARTS

CJ65VA(E4)

Item No.	Code No.	Part Name	Q'ty	Remarks
53	963641	Orbital Cam (C)	1	
54	963642	Washer	2	
55	963347	Washer (A)	1	
56	963344	Gear Ass'y	1	
57	957540	Washer (A)	1	
58	963343	Spindle	1	
59	954015	Tapping Screw	D4 x 35	2
60	958705	Tapping Screw	D4 x 25	1
61A	963396	Gear Cover	1	
62	958246	Felt Packing	1	till 5, 1985
63	939465	Ball Bearing (629DD)	1	
64	957754	Rubber Ring	1	till 5, 1985
65	949215	Machine Screw	M4 x 8	4 (10 pcs.)
66	959155	Steel Ball	D3.969	1 (10 pcs.)
67	984254	Spring (C)	1	
68	673489	E-Type Retaining Ring	1	for D5 shaft
69	963368	Change Knob	1	
70	963380	Orbital Label	1	
71	963359	Connector Holder	1	
72	963622	Plunger Ass'y	1	includes 73
73	949811	Hexagon Socket Hd. Bolt	M4 x 8	1 (10 pcs.)
74	940079	C-Type Retaining Ring	1	for D8 shaft
75	963351	Washer (B)	1	
76	983162	Hexagon Socket Hd. Bolt	M4 x 12	2 Seal Lock Bolt
77	963358	Connector	1	
78A	991398	Flat Hd. Screw	M4 x 10	2 made of stainless steel
79	940916	Connecting Piece	1	
80	940917	Needle Roller (K6/8)	1	
81	963350	Weight Holder	1	
82	963367	Felt (B)	1	
83	874759	E-Type Retaining Ring	2	for D2.5 shaft
85	963363	Gudie Roller	1	
87	963366	Holder Pin	1	
88A	963398	Hexagon Socket Hd. Bolt	M4 x 20	1 w/Flange
89	949235	Machine Screw	M5 x 8	1 (10 pcs.)
90	963370	Base	1	
91	963371	Base Locker	1	
92	982095	Tapping Screw	D4 x 20	2 w/Washer
93	956384	Tapping Screw	D4 x 20	1
94A	963628Z	Plunger Ass'y	1	till 11, 1982, includes 73
94B	963386	Set Ring Ass'y	1	since 12, 1982, till 8, 1984 includes 73
95	—	Switch Plate	1	See alternative parts
96	—	Internal Wire	1	See alternative parts
97	—	Caution Plate	1	See alternative parts
98	986348	Machine Screw	M4 x 12	2 w/Spring Washer, Washer for Chip Cover (B)
99	984750	Tapping Screw	D4 x 16	2 w/Flange

ALTERNATIVE PARTS

CJ65VA(E4)

Item No.	Code No.	Part Name	Q'ty	Remarks
1	963638C	Armature 110V~115V	1	
	963638D	Armature 120V~127V	1	
	963638E	Armature 220V~230V	1	
	963638F	Armature 240V	1	
	963638H	Armature 240V	1	for U.K.
	963638J	Armature 110V	1	for U.K.
	963638G	Armature 220V	1	for F.R. Germany, Netherlands, Finland, Sweden, Austria
4	963637C	Stator Ass'y 110V~115V	1	includes 21
	963637D	Stator Ass'y 120V~127V	1	includes 21
	963637E	Stator Ass'y 220V~230V	1	includes 21
	963637F	Stator Ass'y 240V	1	includes 21
	963637G	Stator Ass'y 220V~230V	1	for N.Z., Netherlands, Denmark, Austria includes 21
	963643H	Stator Ass'y 240V	1	for U.K. includes 21
	963643J	Stator Ass'y 110V	1	for U.K. includes 21
	963643G	Stator Ass'y 220V~230V	1	for Sweden, S. Africa, F.R. Germany, Finland, Austria includes 21
8	932642	Rivet D2.5 x 2.8	2	for U.S.A., Canada
13	959140	Connector (50091)	1	
	959140	Connector (50091)	2	for N.Z., U.K., S. Africa, Netherlands, Denmark, Finland, Sweden, Austria
14	963639	Control Circuit 110V~127V	1	
	963640Z	Control Circuit 220V~240V	1	
17	953327	Cord Armor D8.8	1	
	938051	Cord Armor D10.1	1	
25	999021	Carbon Brush	2	(2 pcs.)
	999084	Carbon Brush	2	for U.S.A., Auto Stop type (2 pcs.)
30	981372	Noise Suppressor	1	for Italy, Denmark
	991313	Noise Suppressor	1	for Netherlands, Finland, Austria, N.Z., U.K., F.R. Germany, Sweden, Norway, S. Africa
31	959144	Terminal (50051)	1	for N.Z., U.K., S. Africa, F.R. Germany, Denmark, Sweden (10 pcs.)
32	963634	Switch Plate	1	for except Finland
35	500201Z	Cord 110V~240V	1	(Cord Armor D10.1)
	500234Z	Cord 110V~140V	1	for F.R. Germany, Italy, Indonesia, Surinam, Malta (Cord Armor D8.8)
	500245Z	Cord 110V~240V	1	for Syria (Cord Armor D10.1)
	500223Z	Cord 110V~240V	1	for Singapore, Kuwait (Cord Armor D10.1)
	500226Z	Cord 230V~240V	1	for N.Z., Papua New Guinea (Cord Armor D8.8)
	500405Z	Cord 240V	1	for Australia (Cord Armor D10.1)
	500247Z	Cord 220V	1	for Netherlands, Sweden (Cord Armor D10.1)
	500240Z	Cord 115V	1	for U.S.A., Canada (Cord Armor D8.8)
	500409Z	Cord 220V	1	for Denmark, Finland, Austria (Cord Armor D8.8)
38	963627Z	Upper Cover Ass'y	1	includes 41, 42, 43
38A	963647	Upper Cover Ass'y	1	for F.R. Germany includes 41, 42, 43
46	963376	Chip Cover	1	
46A	963648	Chip Cover (B)	1	for F.R. Germany

ALTERNATIVE PARTS

CJ65VA(E4)

Item No.	Code No.	Part Name	Q'ty	Remarks
95	963645	Switch Plate	1	for Finland
96	963644	Internal Wire	1	for Finland
97	963646	Caution Plate	1	for U.S.A.

STANDARD ACCESSORIES

Item No.	Code No.	Part Name	Q'ty	Remarks
501	943277	Hexagon Bar Wrench 3 mm	1	
502	963623Z	Blade (B) No. 16	1	(10 pcs.)
503	963621Z	Blade (B) No. 12	1	(10 pcs.)
504	963624Z	Blade (B) No. 21	1	(10 pcs.)
505	963384	Circular Guide	1	
506	940092	Guide Center	1	
507	957563	Guide	1	

ALTERNATIVE PARTS

Item No.	Code No.	Part Name	Q'ty	Remarks
601	963625Z	Blade (B) No. 22	1	(10 pcs.)
602	963620Z	Blade (B) No. 11	1	(10 pcs.)
603	963622Z	Blade (B) No. 15	1	(10 pcs.)
604	963651	Blade (B) No. 11	1	(5 pcs.)
605	963652	Blade (B) No. 12	1	(5 pcs.)
606	963653	Blade (B) No. 15	1	(5 pcs.)
607	963654	Blade (B) No. 16	1	(5 pcs.)
608	963655	Blade (B) No. 21	1	(5 pcs.)
609	963656	Blade (B) No. 22	1	(5 pcs.)