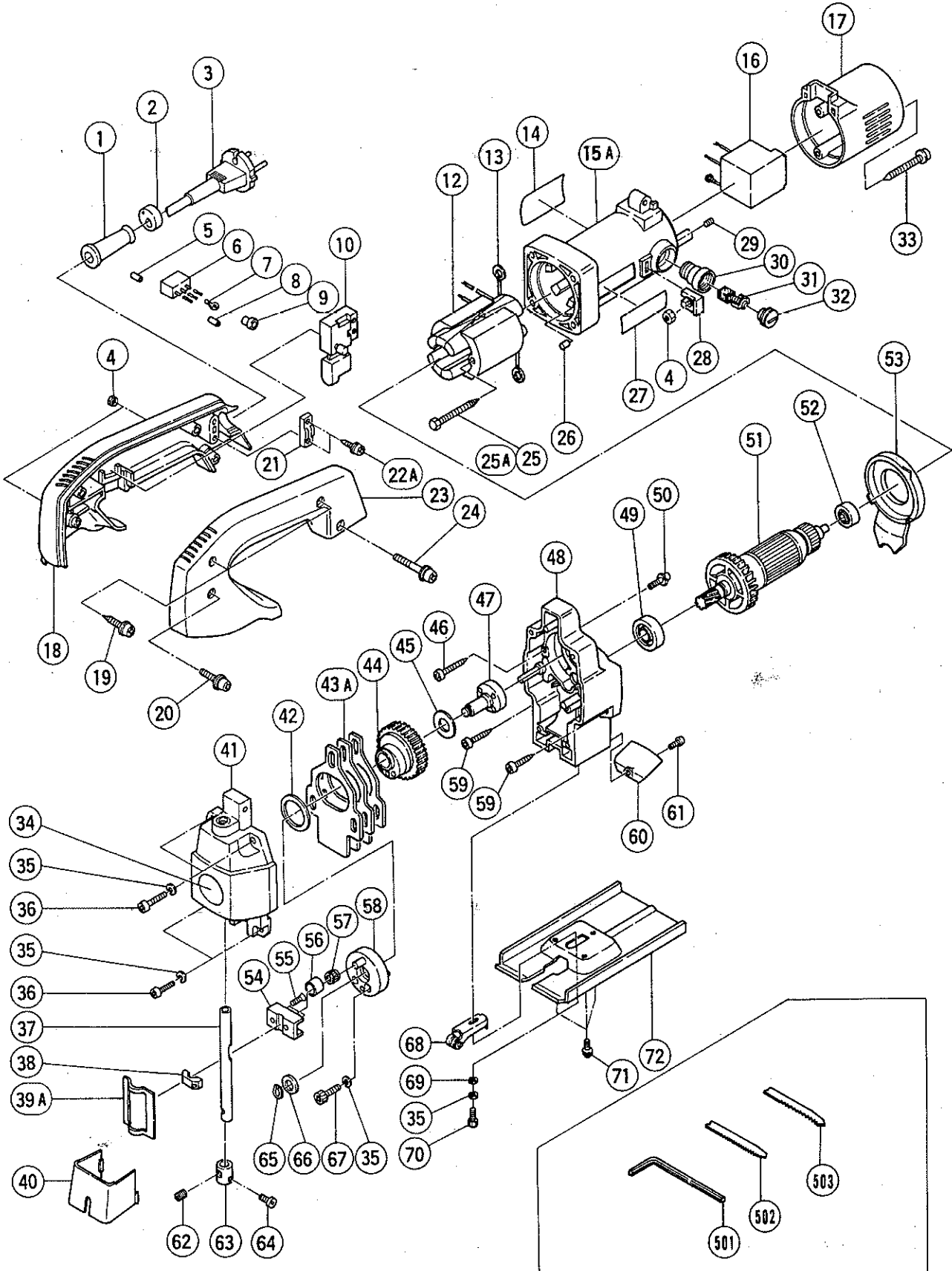


## ELECTRIC TOOL PARTS LIST

■ ELECTRONIC METAL JIG SAW  
Model CJ7V

1987.11.30  
CJ7V(E2)



## PARTS

CJ7V(E2)

Item No.	Code No.	Part Name	Q'ty	Remarks
1	—	Cord Armor	1	See alternative parts
2	940928	Wrench Holder	1	
3	—	Cord	1	See alternative parts
4	949554	Nut M4	1	(10 pcs.)
5	—	Tube (D)	2	See alternative parts
6	—	Noise Suppressor	1	See alternative parts
7	—	Terminal	1	See alternative parts
8	—	Tube (D)	2	See alternative parts
9	959140	Connector (50091)	1~2	(10 pcs.)
10	—	Switch	1	See alternative parts
12	—	Stator Ass'y	1	See alternative parts
13	930630	Brush Terminal	2	
14	—	Name Plate	1	
15A	991409	Housing Ass'y	1	includes 25A, 29, 30
16	—	Control Circuit	1	See alternative parts
17	963375	Tail Cover	1	
18	963372	Handle (A)	1	
19	956636	Tapping Screw D4 x 25	2	w/Washer
20	954878	Machine Screw M4 x 16	2	w/Spring Lock Washer, Washer
21	960266	Cord Clip	1	
22A	984750	Tapping Screw D4 x 16	2	w/Flange
23	963373	Handle (B)	1	
24	963387	Machine Screw M4 x 30	1	w/Spring Lock Washer, Washer
25	986541	Machine Screw M4 x 60	2	w/Spring Lock Washer till 4, 1987
25A	963712	Hexagon Hd. Tapping Screw D4 x 65	2	since 5, 1987
26	931701	Bearing Lock	1	till 2, 1987
27	950565	HITACHI Label	1	
28	963341	Nut Cover	2	till 4, 1987
29	963383	Hexagon Socket Hd. Set Screw M4 x 8	2	
30	937846	Brush Holder	2	
31	999021	Carbon Brush	2	(2 pcs.)
32	937847	Brush Cap	2	
33	963388	Tapping Screw D4 x 60	2	w/Washer
34	962994	Mark Plate	1	
35	949453	Spring Lock Washer	7	for M4 (10 pcs.)
36	949219	Machine Screw M4 x 16	4	(10 pcs.)
37	991394	Plunger	1	
38	963359	Connector Holder	1	
39A	963361	Plate	1	
40	991403	Chip Cover	1	
41	991393	Upper Cover	1	
42	963349	Washer (A)	1	till 5, 1987
43A	963658	Balance Weight	1	
44	963344	Gear	1	
45	957540	Washer (A)	146	
46	954015	Tapping Screw D4 x 35	2	
47	963343	Spindle	1	
48	991391	Gear Cover	1	
49	939465	Ball Bearing (629DD)	1	
50	991207	Machine Screw M4 x 8	4	(Seal Lock Screw) w/Spring Lock Washer
51	—	Armature	1	See alternative parts
52	939291	Ball Bearing (608VVC2)	1	
53	963374	Fan Guide	1	

## PARTS

CJ7V(E2)

Item No.	Code No.	Part Name	Qty	Remarks
54	991397	Connector	1	
55	991398	Flat Hd. Screw M4 x 10	2	(made of stainless steel)
56	940916	Connecting Piece	1	
57	940917	Needle Roller (K6/8)	1	
58	963350	Weight Holder	1	
59	958705	Tapping Screw D4 x 25	2	
60	991399	Flow Guide	1	
61	949215	Machine Screw M4 x 8	1	(10 pcs.)
62	991396	Hexagon Socket Hd. Set Screw M6 x 6	1	
63	991395	Set Ring Ass'y	1	includ. 62, 64
64	973563	Hexagon Socket Hd. Bolt M4 x 8	1	
65	940079	C-Type Retaining Ring	1	for DB shaft
66	963351	Washer (B)	1	
67	983162	Hexagon Socket Hd. Bolt M4 x 12	2	(Seal Lock Bolt)
68	991401	Guide Roller	1	
69	949423	Washer	1	for M4 (10 pcs.)
70	949754	Hexagon Socket Hd. Bolt M4 x 16	1	(10 pcs.)
71	951039	Machine Screw M4 x 12	3	w/Spring Lock Washer
72	991408	Base	1	

## ALTERNATIVE PARTS

Item No.	Code No.	Part Name	Qty	Remarks
1	953327	Cord Armor D8.8	1	
	938051	Cord Armor D10.1	1	
3	500201Z	Cord 110V	1	(Cord Armor D10.1)
	500234Z	Cord 220V	1	(Cord Armor D8.8)
	932572Z	Cord 110V ~ 240V	1	for U.K. (Cord Armor D8.8)
	500247Z	Cord 220V	1	for Finland, Sweden (Cord Armor D10.1)
	500248Z	Cord 220V	1	for Switzerland (Cord Armor D10.1)
5	981373	Tube (D)	2	for F.R. Germany, France, Denmark, Finland, Sweden
6	991313	Noise Suppressor	1	for U.K., F.R. Germany, France, Finland, Sweden
	982043Z	Noise Suppressor	1	for Switzerland
	971828	Noise Suppressor	1	for Denmark
7	959144	Terminal (50051)	1	for U.K., F.R. Germany, France, Denmark, Finland, Sweden (10 pcs.)
8	981373	Tube (D)	2	for U.K., F.R. Germany, France, Denmark, Finland, Sweden
10	957747	Single Pole Switch (Screw Type)	1	w/Lock
	971667Z	Double Pole Switch (Pillar Type)	1	w/Lock for U.K., F.R. Germany, France, Denmark, Finland, Sweden
12	963637C	Stator Ass'y 110V	1	includes 13
	963643G	Stator Ass'y 220V	1	for Europe includes 13
	963643J	Stator Ass'y 110V	1	for U.K. includes 13
	963643H	Stator Ass'y 240V	1	for U.K. includes 13

