

Hitachi Power Tools

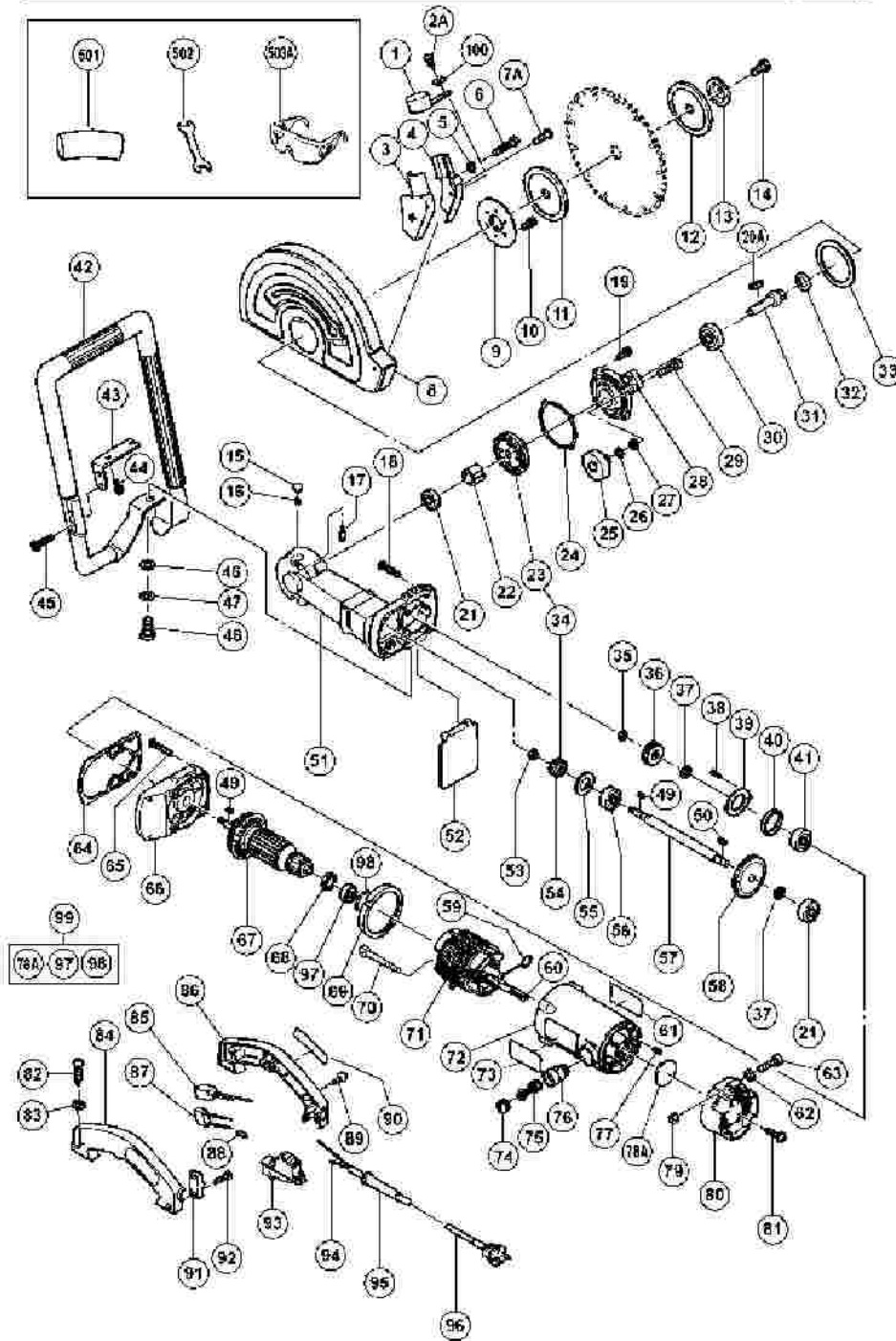
LIST NO. 0777

ELECTRIC TOOL PARTS LIST

■ DISC CUTTER
Model CM 12Y

2004 · 6 · 1

(E1-3)



CM12Y

Pos. Nr.	Art. Nr.	Beschreibung	Stueck	Kommentar	Beschreibung
1	312-314	GUMMIKAPPE CM12Y	1		RUBBER CAP
2A	935-196	+KOPFSCHRAUBE M4X12 M.U-SCHEIBE	1		MACHINE SCREW (W/WASHERS) M4X12 (BLACK)
3	312-312	STAUBSAMMLER (B) CM12Y	1		DUST COLLECTOR (B)
4	312-311	STAUBSAMMLER (A) CM12Y	1		DUST COLLECTOR (A)
5	949-453	FEDERSCHEIBE M4 (10ST)	1		SPRING WASHER M4 (10 PCS.)
6	949-224	+KOPFSCHRAUBE M4X30 (10ST)	1		MACHINE SCREW M4X30 (10 PCS.)
7A	935-196	+KOPFSCHRAUBE M4X12 M.U-SCHEIBE	2		MACHINE SCREW (W/WASHERS) M4X12 (BLACK)
8	312-310	SCHUTZHAUBE CM12Y	1		WHEEL GUARD
9	312-307	SCHUTZHALTER CM12Y	1		GUARD HOLDER
10	992-038	+KOPFSCHRAUBE M5X10 M.FEDERRING	3		SEAL LOCK SCREW (W/SP. WASHER) M5X10
11	312-327	SPANNSCHEIBE (B) CM12Y	1		WHEEL WASHER (B)
12	312-324	SPANNSCHEIBE (C) CM12Y	1		WHEEL WASHER (C)
13	312-308	SPANNSCHEIBE (D) CM12Y	1		WHEEL WASHER (D)
14	312-309	LINKSGEWINDESCHRAUBE M10X20	1		BOLT (LEFT HAND) M10X20
15	306-888	ARRETIERKNOPF CM12Y/G18U/G23U u.a	1		PUSHING BUTTON
16	306-889	FEDER CM12Y/G18U/G23U u.a.	1		SPRING
17	306-	ARRETIERSTIFT	1		LOCK PIN

	890	CM12Y/G18U/G23U u.a			
18	312-298	+KOPFSCHRAUBE M5X35 M. U-SCHEIBE	4		MACHINE SCREW (W/WASHERS) M5X35
19	994-192	INBUSSCHRAUBE M5X16 M.FLANSCH	4		HEX. SOCKET HD. BOLT (W/FLANGE) M5X16
20A	948-920		1		FEATHER KEY 4X4X30
21	620-0VV	KUGELLAGER 6200 VV	2		BALL BEARING 6200VVCMP21
22	312-303	SPERRBUCHSE CM12Y	1		LOCK SLEEVE
23	306-122	ZAHNRAD CM12Y/G18U/UA/UB	1		GEAR
24	312-304	DICHTUNGSPLATTE (A) CM12Y	1		SEAL PLATE (A)
25	302-458	KNOPF C6U-C9U/C6BU/C7BU/	1		KNOB
26	949-433	UNTERLEGSCHLEIBE M8 (10ST)	1		BOLT WASHER M8 (10 PCS.)
27	957-042	UNTERLEGSCHLEIBE M8 CM12Y/G18SC	1		SUPER LOCK WASHER M8
28	312-305	GETRIEBEDECKEL CM12Y	1		PACKING GLAND
29	302-457	SCHLOSSSCHRAUBE M8X30 C6U-C9U u.a.	1		BOLT (SQUARE) M8X30
30	630-2DD	KUGELLAGER 6302 DD	1		BALL BEARING 6302DDCMP21
31	312-302	WELLE CM12Y	1		SPINDLE
32	312-306	FILZDICHTUNG CM12Y	1		FELT PACKING
33	312-651	DISTANZSCHEIBE CM12Y	1		SPACER
34	306-121	GETRIEBE KOMPL. CM12Y/G18U/UA/UB	1	"INCLUD.23,54"	GEAR AND PINION ASS'Y
35	946-228	U-MUTTER M8 G18SE2/G18U/UA/UB/23U	1		U-NUT M8
36	312-325	RITZEL (A) CM12Y	1		PINION (A)
37	312-	ZWISCHENSCHLEIBE CM12Y	2		SPACE

	294				WASHER
38	990-430	+SENKKOPFSCHRAUBE M4X10 SELBSTSI.	2		SEAL LOCK FLAT HD. SCREW M4X10
39	312-293	LAGERDECKEL CM12Y	1		BEARING COVER
40	994-208	GUMMIRING (B) G18SE/CM12Y u.a.	1		RUBBER RING (B)
41	630-1DD	KUGELLAGER 6301 DD	1		BALL BEARING 6301DDCMPS21
42	312-315	HANDGRIFFROHR CM12Y	1		PIPE HANDLE (C)
43	312-316	WINKEL CM12Y	1		JOINT PLATE
44	878-533	INBUSSCHRAUBE M6X16 CM12Y	2		HEX. SOCKET HD. BOLT (W/FLANGE) M6X16
45	878-877	INBUSSCHRAUBE M6X30 NR100A	2		HEX. SOCKET HD. BOLT (W/FLANGE) M6X30
46	949-437	UNTERLEGSCHIEBE M12 (10ST) CB75F	1		BOLT WASHER M12 (10 PCS.)
47	949-463	FEDERRING M12 (10ST)	1		SPRING WASHER M12 (10 PCS.)
48	949-671	BOLZEN M12X25 (10 STÜCK)	1		BOLT M12X25 (10 PCS.)
49	940-533	KEIL 3X3X10 G13SC/G15SA u.a.	2		FEATHER KEY 3X3X10
50	948-919	KEIL 4X4X15 CM12Y/CT8FA	1		FEATHER KEY 4X4X15
51	312-297	GETRIEBEGEHÄUSE KOMPLETT CM12Y	1	INCLUD.15-17	GEAR COVER ASS'Y
52	312-313	STAUBSCHUTZ CM12Y	1		DUST GUARD
53	960-256	U-MUTTER LINKSGEWINDE M8 CM12Y	1		U-NUT (LEFT HAND) M8
54	306-123	RITZEL CM12Y/G18U/UA/UB	1		PINION
55	312-296	DRUCKSCHEIBE (A) CM12Y	1		THRUST WASHER (A)
56	630-1VV	KUGELLAGER 6301VV	1		BALL BEARING 6301VVCMP21

57	312-295	ANTRIEBSWELLE CM12Y	1		DRIVE SHAFT
58	315-326	ERSTES ZAHNRAD CM12Y	1		FIRST GEAR (A)
59	958-032	KOHLLENHALTERKLEMME DIV.TYPEN	2		BRUSH TERMINAL
60	981-373	ADERENDHÜLSE (D) DIV.TYPEN	1		TUBE (D)
61			1		HITACHI LABEL
62	949-425	UNTERLEGSCHLEIBE M6 (10ST)	1		WASHER M6 (10 PCS.)
63	949-263	+KOPFSCHRAUBE M6X35 (10ST)	1		MACHINE SCREW M6X35 (10 PCS.)
64	312-291	DICHTUNGSPLATTE (B) CM12Y	1		SEAL PLATE (B)
65	301-654	SCHNEIDSCHRAUBE D5X35 MIT FLANSCH	4		TAPPING SCREW (W/FLANGE) D5X35
66	312-292	INNENDECKEL CM12Y	1		INNER COVER
67	360-287C		1		ARMATURE ASS'Y 100V-115V
67	360-287E	ANKER 220V-230V G18UA/UB/G23UA/UB	1		ARMATURE ASS'Y 220V-230V
67	360-287F		1		ARMATURE ASS'Y 240V
68	310-998	STAUBDICHTUNG G18U/UA/UB/G23U u.a	1		DUST SEAL
69	306-103	LUFTFÜHRUNG G18U/UA/UB/G23UA u.a.	1		FAN GUIDE
70	984-271	SECHSKANTSCHNEIDSCHRAUBE D5X75	2		HEX. HD. TAPPING SCREW D5X75
71	340-348		1	"INCLUD.59,60"	STATOR ASS'Y 100V-110V
71	340-349E	STATOR 230V CM12Y	1	"INCLUD.59,60"	STATOR ASS'Y 230V
71	340-349F		1	"INCLUD.59,60"	STATOR ASS'Y 240V
71	340-349G		1	"INCLUD.59,60 FOR SGP"	STATOR ASS'Y 230V
72	306-	MOTORGEHÄUSE	1	"INCLUD.76,77"	HOUSING

	102	KOMPL.G18UA/UB u.a.			ASS'Y
73			1		NAME PLATE
74	940-540	KOHLLENKAPPE C13U/M12V/DIV.TYPEN	2		BRUSH CAP
75	999-044	KOHLLENBÜRSTEN (PAAR)	2		CARBON BRUSH (1 PAIR)
76	980-487	KOHLLENHALTER C13U/CM12Y u.a.	2		BRUSH HOLDER
77	938-477	INBUSSTIFTSCHRAUBE M5X8	2		HEX. SOCKET SET SCREW M5X8
78A	313-306	LAGERBUCHSE CM12Y	1	SINCE 6.1996	BEARING BUSHING
79	949-556	MUTTER M6 (10ST)	1		NUT M6 (10 PCS.)
80	312-299	ENDDECKEL CM12Y	1		TAIL COVER
81	305-558	SCHNEIDSCHRAUBE D5X25 M.FLANSCH	4		TAPPING SCREW (W/FLANGE) D5X25 (BLACK)
82	949-241	+KOPFSCHRAUBE M5X20 (10ST)	2		MACHINE SCREW M5X20 (10 PCS.)
83	949-454	FEDERSCHEIBE M5 (10ST)	2		SPRING WASHER M5 (10 PCS.)
84	312-300	HANDGRIFF (A) CM12Y	1		HANDLE (A)
85	312-318		1	FOR GBR (110V)	DIODE
86	312-301	HANDGRIFF (B) CM12Y	1		HANDLE (B)
87	311-935	KONDENSATOR CM12Y/G12SA u.a.	1	EXCEPT FOR GBR (110V)	NOISE SUPPRESSOR
88	981-373	ADERENDHÜLSE (D) DIV.TYPEN	2		TUBE (D)
89	304-035	SCHNEIDSCHRAUBE D4X25 MIT FLANSCH	3		TAPPING SCREW (W/FLANGE) D4X25 (BLACK)
90	312-317	GRIFFGUMMI CM12Y	2		GRIP RUBBER
91	960-266	KABELKLEMME DIV.TYPEN	1		CORD CLIP

92	984-750	SCHNEIDSCHRAUBE D4X16 MIT FLANSCH	2		TAPPING SCREW (W/FLANGE) D4X16
93	307-650	SCHALTER CM12Y	1		SWITCH (2P PILLAR TYPE) W/SAFETY LOCK
94	981-373	ADERENDHÜLSE (D) DIV.TYPEN	2	EXCEPT FOR GBR	TUBE (D)
95	940-778	KABELKNICKSCHUTZ D10.7 DIV.TYPEN	1		CORD ARMOR D10.7
96	500-438Z	ANSCHLUSSKABEL MIT STECKER	1		CORD
96	500-246Z		1	(CORD ARMOR D10.7) FOR GBR	CORD
96	500-423Z		1	FOR SGP	CORD
96	500-439Z		1	FOR AUS	CORD
97	600-0VV	KUGELLAGER 6000 VV	1	SINCE 6.1996	BALL BEARING 6000VVCMP521
98	994-202	GUMMIRING (A) G18SE/CM12Y u.a.	1	SINCE 6.1996	RUBBER RING (A)
99	313-307	LAGERBUCHSE KOMPL.CM12Y	1	"INCLUD.78A,97,98 TILL 5.1995"	BEARING BUSHING ASS'Y
100	322-270		1		THRUST WASHER
501	312-360	ABSAUGADAPTER CM12Y	1		HOSE
502	974-254	SCHLÜSSEL 17/19 CM12Y/CB100F	1		WRENCH 17/19MM
503A	875-769	SCHUTZBRILLE	1		SAFETY GLASSES
601	312-323	SPANNSCHEIBE (A) CM12Y	1		WHEEL WASHER (A)
602	985-608		1		CUT-OFF WHEEL FOR METAL D25.4 (10 PCS.)
603	985-609	"TRENNSCHEIBE,MET.,• E05X22,2 (10ST)"	1		CUT-OFF WHEEL FOR METAL D22 (10 PCS.)
	985-				CUT-OFF WHEEL FOR

604	610		1	STONE D25.4 (10 PCS.)
605	985- 611	"TRENNSCHEIBE,STE.,• E05X22,2 (10ST)"	1	CUT-OFF WHEEL FOR STONE D22 (10 PCS.)
606	985- 618	"DIAMANTTRENNSCHEIBE 305X22,2"	1	DIAMOND WHEEL (SEGMENT) 305MM-D22.2 HOLE
607	985- 619	"DIAMANTTRENNSCHEIBE 305X22,2X3MM"	1	DIAMOND WHEEL (SEGMENT) 305MM-D22.2 HOLE
608	312- 367	"DIAMANTTRENNSCHEIBE 305X22,2"	1	DIAMOND WHEEL (SEGMENT) 305MM-D22.2 HOLE