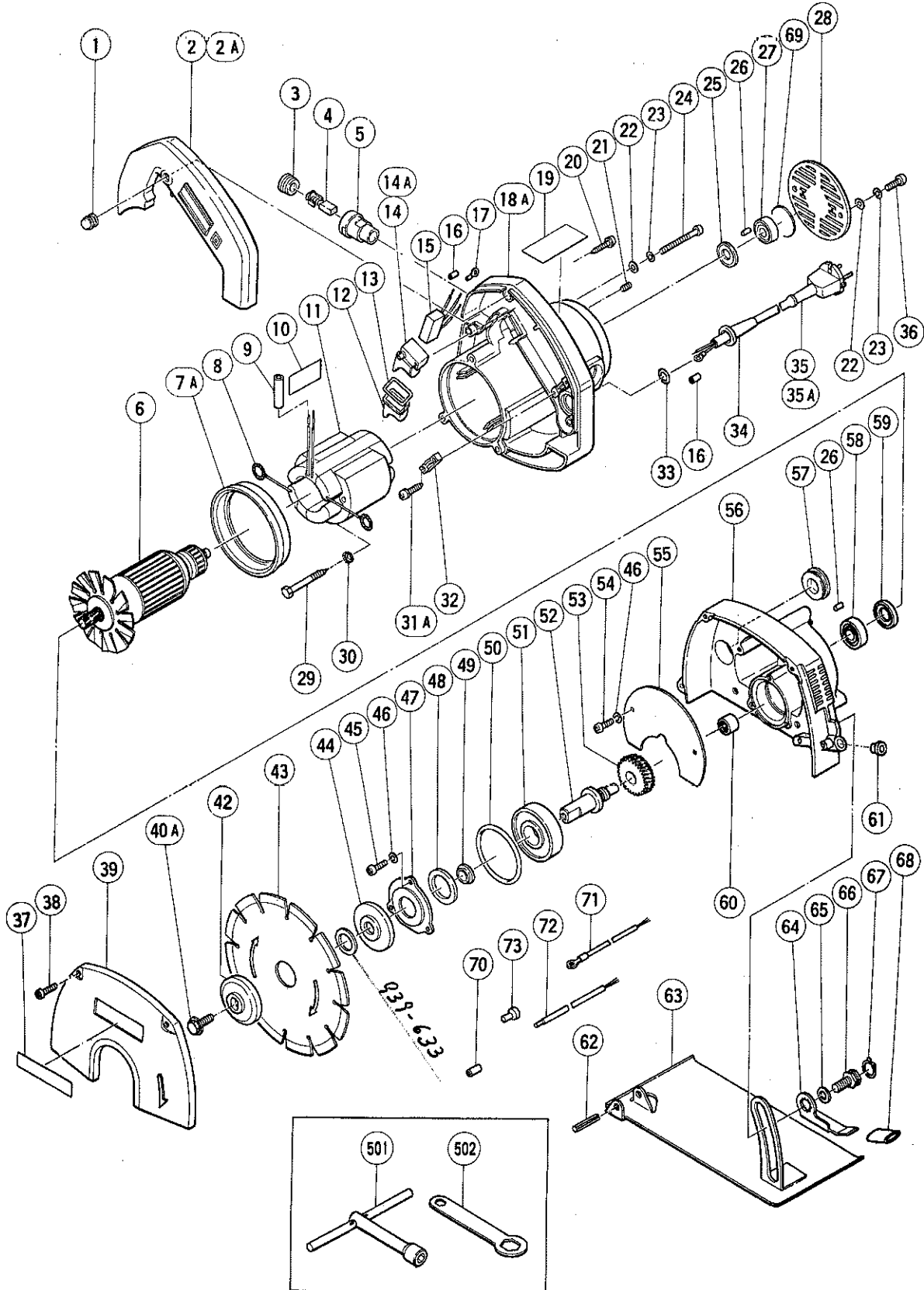


ELECTRIC TOOL PARTS LIST

■ CUTTER
Model CM 6

1993 · 6 · 30
(E4)



PARTS

CM 6

ITEM NO.	CODE NO.	DESCRIPTION	NO. USED	REMARKS
* 1	956-866	RUBBER COVER (B)	1	(TILL 10.1986 FOR ITA,HOL)
* 2	983-857	HANDLE COVER ASS'Y	1	INCLUD.1(TILL 10.1986 FOR ITA,HOL)
* 2A	956-856Z	HANDLE COVER	1	SINCE 11.1986 FOR ITA,HOL
3	961-781	BRUSH CAP	2	
4	999-043	CARBON BRUSH (1 PAIR)	2	
5	981-588	BRUSH HOLDER	2	
* 6	983-860C	ARMATURE ASS'Y 110V - 115V	1	INCLUD.25,27,58,59
* 6	983-860D	ARMATURE ASS'Y 120V - 127V	1	INCLUD.25,27,58,59
* 6	983-860E	ARMATURE ASS'Y 220V - 230V	1	INCLUD.25,27,58,59
* 6	983-860H	ARMATURE ASS'Y 240V	1	INCLUD.25,27,58,59
7A	954-584	FAN GUIDE	1	
8	930-703	BRUSH TERMINAL	2	
9		VINYL TUBE (I.D.8XT1X100)	1	TILL 2.1987
10	983-858	SEAL PACKING	1	
* 11	983-859G	STATOR ASS'Y 110V - 115V	1	INCLUD.8
* 11	983-859D	STATOR ASS'Y 120V - 127V	1	INCLUD.8
* 11	983-859H	STATOR ASS'Y 220V - 230V	1	INCLUD.8
* 11	983-859J	STATOR ASS'Y 240V	1	INCLUD.8
* 11	983-859E	STATOR ASS'Y 220V - 230V	1	INCLUD.8 FOR EUROPE
* 11	983-859F	STATOR ASS'Y 240V	1	INCLUD.8 FOR GBR
* 11	983-859C	STATOR ASS'Y 110V	1	INCLUD.8 FOR GBR
12	956-882	RUBBER COVER (A)	1	
13	944-486	O - RING (1AP - 20)	1	
* 14	971-667Z	SWITCH (2P PILLAR TYPE) W/LOCK	1	
* 14A	958-400Z	SWITCH (2P PILLAR TYPE) W/O LOCK	1	FOR ITA,HOL
* 15	500-262Z	NOISE SUPPRESSOR	1	
* 15	960-283Z	NOISE SUPPRESSOR	1	W/O TERMINAL FOR SUI
16	981-373	TUBE (D)	3	
17	961-418Z	TERMINAL	1	
18A	983-840	HOUSING ASS'Y	1	INCLUD.5,21,26,69
19		NAME PLATE	1	
20	982-095	TAPPING SCREW (W/WASHER) D4X20	1	
21	962-782	HEX. SOCKET SET SCREW M5X6	2	
22	949-424	WASHER M5 (10 PCS.)	5	
23	949-454	SPRING WASHER M5 (10 PCS.)	5	
24	949-250	MACHINE SCREW M5X50 (10 PCS.)	3	
25	956-387	DUST SEAL (A)	1	
26	946-362	BEARING LOCK	2	
27	608-VVM	BALL BEARING 608VVMC2EPS2L	1	
28	956-880	TAIL COVER	1	
29	960-251	HEX. HD. TAPPING SCREW D5X65	2	
30	956-764	SPECIAL WASHER	2	
31A	984-750	TAPPING SCREW (W/FLANGE) D4X16	2	
32	937-631	CORD CLIP	1	
* 33	876-316	O - RING (S - 7)	1	FOR CORD ARMOR D8.2
* 33	875-806	O - RING (S - 9)	1	FOR CORD ARMOR D10.2
* 34	930-467	CORD ARMOR D8.2	1	
* 34	930-026	CORD ARMOR D10.2	1	
* 35	500-201Z	CORD	1	(CORD ARMOR D10.2)
* 35	500-223Z	CORD	1	(CORD ARMOR D10.2) FOR KUW,SIN
* 35	500-231Z	CORD	1	(CORD ARMOR D8.2) FOR GBR (110V)

*: ALTERNATIVE PARTS

PARTS

CM 6

ITEM NO.	CODE NO.	DESCRIPTION	NO. USED	REMARKS
*	35	500-234Z	CORD	1 (CORD ARMOR D8.2) FOR INA
*	35	500-245Z	CORD	1 (CORD ARMOR D10.2) FOR SYR
*	35	500-247Z	CORD	1 (CORD ARMOR D10.2) FOR FRG
*	35	500-248Z	CORD	1 (CORD ARMOR D10.2) W/O TERMINAL FOR SUI
*	35	500-420Z	CORD	1 (CORD ARMOR D10.2) FOR SAU
*	35A	500-435Z	CORD	1 (CORD ARMOR D8.2) FOR GBR (240V)
	38	949-238	MACHINE SCREW M5X14 (10 PCS.)	2
	37	983-865	HITACHI LABEL	1
	38	949-218	MACHINE SCREW M4X14 (10 PCS.)	2
	39	983-864	CUTTER COVER ASS'Y	1 INCLUD.37
	40A	998-335	BOLT (LEFT HAND) W/WASHER M7X17.5	1
	42	957-064	WASHER (B)	1
	43	939-594	DIAMOND WHEEL (SEGMENT) 155MM -- D25.4 HOLE	1
*	44	983-858	WASHER (A)	1
*	44	983-860	WASHER (A)	1 FOR SUI,FRA
	45	949-217	MACHINE SCREW M4X12 (10 PCS.)	3
	46	949-453	SPRING WASHER M4 (10 PCS.)	5
	47	983-846	BEARING COVER (B)	1
	48	971-134	X - RING	1
	49	983-853	SLEEVE	1
	50	983-852	O - RING	1
	51	630-2VV	BALL BEARING 6302VVCMP2S	1
	52	983-843	SPINDLE	1
	53	983-844	GEAR	1
	54	949-215	MACHINE SCREW M4X8 (10 PCS.)	2
	55	983-845	PLATE	1
	56	983-841	GEAR COVER ASS'Y	1 INCLUD.80
	57	940-831	CAP (A)	1
	58	600-1VV	BALL BEARING 6001VVCMP2L	1
	59	983-847	DUST SEAL (H)	1
	60	670-714	NEEDLE BEARING (HK0810)	1
	61	930-426	RUBBER BUSHING	1
	62	949-874	ROLL PIN D6X36 (10 PCS.)	1
	63	983-861	BASE	1
	64	983-863	LEVER	1
	65	949-426	WASHER M8 (10 PCS.)	1
	66	983-862	BOLT (LEFT HAND) M8X15	1
	67	939-543	RETAINING RING FOR D14 SHAFT (10 PCS.)	1
	68		VINYL TUBE (I.D.8XT1X22)	1
	69	983-866	BEARING SEAL	1
*	70	981-373	TUBE (D)	2 FOR EUROPE
*	71	983-869	INTERNAL WIRE	1 FOR SUI
*	72	983-880	INTERNAL WIRE	2 FOR SUI
*	73	959-140	CONNECTOR 50091 (10 PCS.)	3 FOR SUI

*: ALTERNATIVE PARTS

STANDARD ACCESSORIES

CM 6

ITEM NO.	CODE NO.	DESCRIPTION	NO. USED	REMARKS
501	940-543	BOX WRENCH 10MM	1	
502	941-057	WRENCH (HEX. SOCKET 10/19.2MM)	1	

OPTIONAL ACCESSORIES

ITEM NO.	CODE NO.	DESCRIPTION	NO. USED	REMARKS
601	980-804	DUST HOSE	1	
602	939-593	DIAMOND WHEEL (SEGMENT) 125MM - D20 HOLE	1	
603	959-794	DIAMOND WHEEL (SEGMENT) 150MM - D25.4 HOLE	1	
604	306-914	DIAMOND WHEEL (SEGMENT) 150MM - D22.2 HOLE	1	FOR CONCRETE
605	306-915	DIAMOND WHEEL 150MM - D22.2 HOLE	1	WAVE SHAPE TYPE FOR CONCRETE
606	306-916	DIAMOND WHEEL (SEGMENT) 150MM - D22.2 HOLE	1	FOR ABRASIVE MATERIALS

* : ALTERNATIVE PARTS