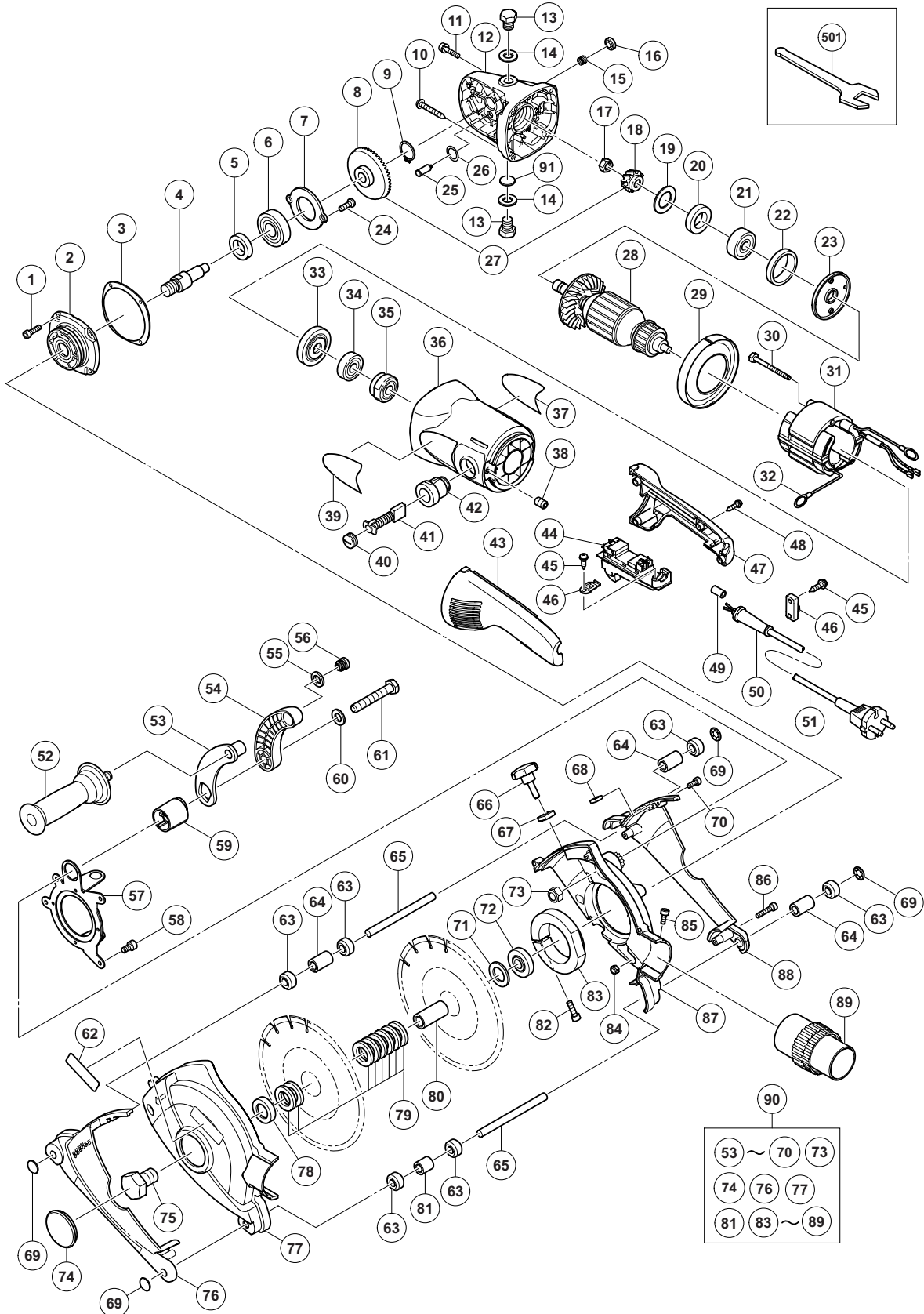


## ELECTRIC TOOL PARTS LIST

**WALL CHASER**  
**Model CM 7MR**

**2009·6·22**  
**(E1)**



**PARTS**

CM 7MR

ITEM NO.	CODE NO.	DESCRIPTION	NO. USED	REMARKS
1	994-192	HEX. SOCKET HD. BOLT (W/FLANGE) M5 X 16	4	
2	320-227	PACKING GLAND	1	
3	320-228	SEAL PLATE	1	
4	320-234	SPINDLE	1	
5	990-852	FELT PACKING (B)	1	
6	630-2VV	BALL BEARING 6302VVCMP2L	1	
7	320-229	BEARING COVER (B)	1	
8		GEAR	1	
9	939-542	RETAINING RING FOR D12 SHAFT (10 PCS.)	1	
10	323-209	TAPPING SCREW (W/FLANGE) D5 X 35 (BLACK)	4	
11	984-509	SEAL LOCK HEX. SOCKET HD. BOLT M5 X 14	2	
12	320-217	GEAR COVER ASS'Y	1	INCLUD. 15, 16, 25, 26, 91
13	331-050	BOLT M14	2	
14	331-045	NYLON WASHER D14	2	
15	320-219	SPRING	1	
16	306-888	PUSHING BUTTON	1	
17	320-226	SPECIAL NUT M10	1	
18		PINION	1	
19	320-221	SEAL WASHER	1	
20	320-222	FELT PACKING	1	
21	630-1VV	BALL BEARING 6301VVCMP2L	1	
22	994-208	RUBBER RING (B)	1	
23	320-220	BEARING COVER (A)	1	
24	949-236	MACHINE SCREW M5 X 10 (10 PCS.)	2	
25	306-890	LOCK PIN	1	
26	320-218	O-RING	1	
27	330-032	GEAR AND PINION SET	1	INCLUD. 8, 18
* 28	360-762C	ARMATURE 110V	1	
* 28	360-762E	ARMATURE 220V-240V	1	
29	320-215	FAN GUIDE	1	
30	961-501	HEX. HD. TAPPING SCREW D5 X 60	2	
* 31	340-664C	STATOR ASS'Y 110V	1	INCLUD. 32
* 31	340-664E	STATOR ASS'Y 220V-230V	1	INCLUD. 32
32	958-032	BRUSH TERMINAL	2	
33	320-216	DUST SEAL	1	
34	600-0VV	BALL BEARING 6000VVCMP2L	1	
35	321-536	BEARING BUSHING	1	
36	325-640	HOUSING ASS'Y	1	INCLUD. 42
37		NAME PLATE	1	
38	938-477	HEX. SOCKET SET SCREW M5 X 8	2	
39		HITACHI LABEL (A)	1	
40	940-540	BRUSH CAP	2	
* 41	999-044	CARBON BRUSH (1 PAIR)	2	
* 41	999-074	CARBON BRUSH (AUTO STOP TYPE) (1 PAIR)	1	FOR EUROPE, AUT
* 41	999-044	CARBON BRUSH (1 PAIR)	1	FOR EUROPE, AUT
42	980-487	BRUSH HOLDER	2	
43	325-641	HANDLE (B)	1	
44	320-238	SWITCH (2P PILLAR TYPE) W/SAFETY LOCK	1	
* 45	984-750	TAPPING SCREW (W/FLANGE) D4 X 16	2	
* 45	984-750	TAPPING SCREW (W/FLANGE) D4 X 16	1	FOR GBR (110V)

**PARTS**

CM 7MR

ITEM NO.	CODE NO.	DESCRIPTION	NO. USED	REMARKS	
*	46	960-266	CORD CLIP	1	
*	46	331-336	CORD CLIP	1	FOR GBR (110V)
	47	325-642	HANDLE (A)	1	
	48	305-812	TAPPING SCREW (W/FLANGE) D4 X 16 (BLACK)	4	
	49	981-373	TUBE (D)	2	FOR CORD
*	50	940-778	CORD ARMOR D10.7	1	
*	50	331-335	CORD ARMOR D11.2	1	FOR GBR (110V)
*	51	500-247Z	CORD	1	(CORD ARMOR D10.7)
*	51	500-450Z	CORD	1	(CORD ARMOR D10.7) FOR GBR (230V)
*	51	500-482Z	CORD	1	(CORD ARMOR D11.2) FOR GBR (110V)
	52	937-981	SIDE HANDLE FOR M14	1	
	53	331-027	HANDLE ARM (B)	1	
	54	331-058	HANDLE ARM (A)	1	
	55	331-053	NYLON WASHER D12	1	
	56	331-037	HANDLE PLUG	1	
	57	331-026	GEAR BOX BRACKET	1	
	58	331-048	HEX. SOCKET HD. BOLT M5 X 12	4	
	59	331-059	HANDLE RATCHET	1	
	60	331-043	BOLT WASHER D12	1	
	61	331-044	BOLT M12	1	
	62		HITACHI LABEL (C)	1	
	63	331-028	ROLLER	6	
	64	331-031	ROLLER SPACER (30)	3	
	65	331-029	ROLLER SHAFT	2	
	66	331-052	KNOB BOLT	1	
	67	331-062	LOCK WASHER	1	
	68	331-040	SQUARE NUT M8	1	
	69	331-041	SHAFT CAP	4	
	70	331-046	HEX. SOCKET HD. BOLT M4 X 12	1	
	71	331-032	BLADE SPACER (3)	1	
	72	937-907Z	WHEEL WASHER (A)	1	
	73	331-042	NYLOCK NUT M12	1	
	74	331-038	RUBBER GROMMET	1	
	75	331-050	BOLT M14	1	
	76	331-056	DUST GUARD (A)	1	
	77	331-054	DUST COVER (A)	1	
	78	331-034	BLADE WASHER	1	
	79	331-033	BLADE SPACER (5)	8	
	80	331-035	DRIVE SHAFT	1	
	81	331-030	ROLLER SPACER (20)	1	
	82	331-049	HEX. SOCKET HD. BOLT M6 X 25	1	
	83	331-060	GEAR BOX CLAMP	1	
	84	331-051	NYLOCK NUT M5	4	
	85	331-048	HEX. SOCKET HD. BOLT M5 X 12	1	
	86	331-047	HEX. SOCKET HD. BOLT M4 X 20	6	
	87	331-055	DUST COVER (B)	1	
	88	331-057	DUST GUARD (B)	1	
	89	331-061	VACUUM COUPLING	1	
	90	331-025	DUST COVER ASS'Y	1	INCLUD. 53-70, 73, 74, 76, 77, 81, 83-89
	91	937-033	FELT WASHER	1	

