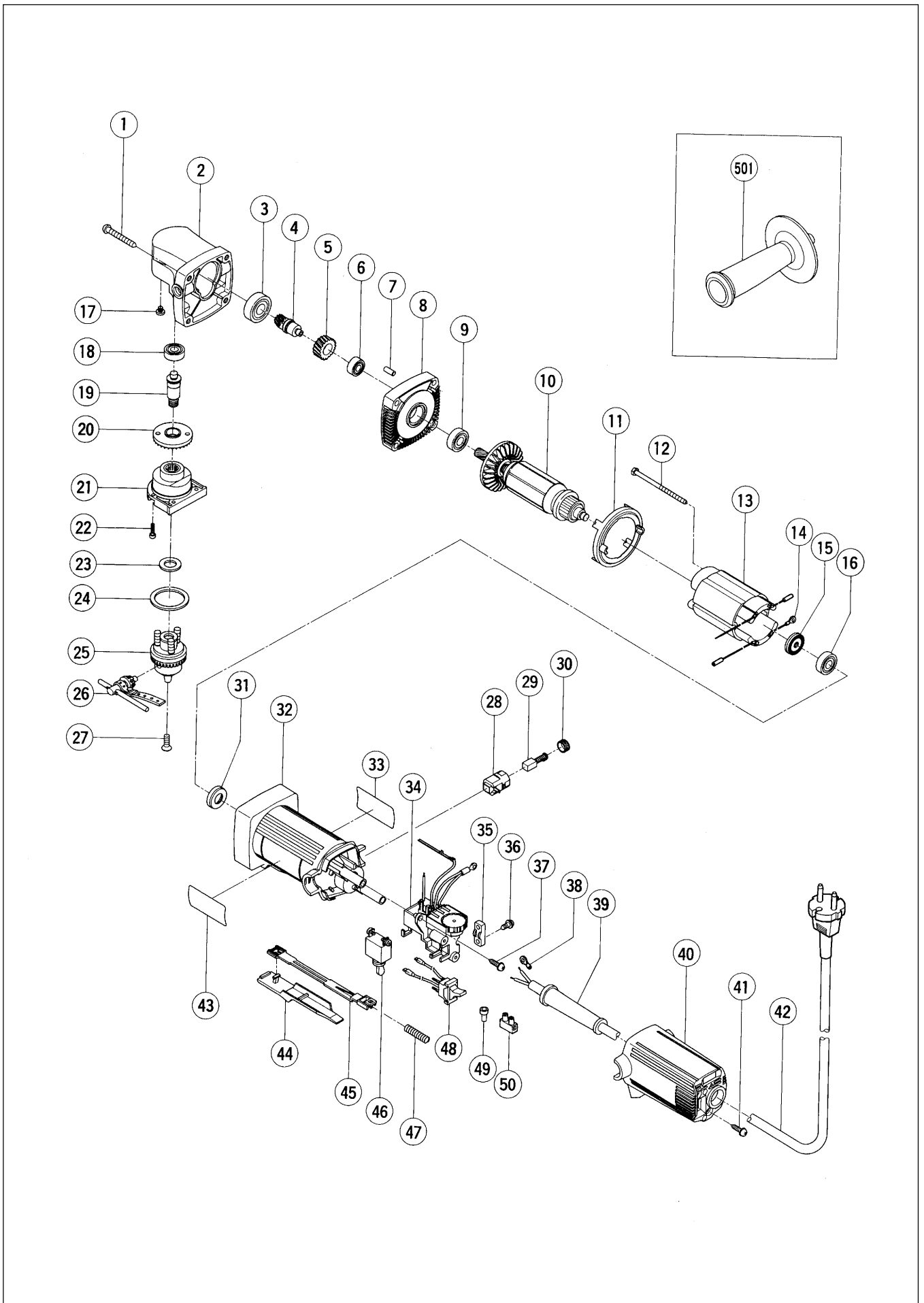


Assembly Diagram for D 10YB



PARTS

D 10YB

ITEM NO.	CODE NO.	DESCRIPTION	NO. USED	REMARKS	
1	316-458	TAPPING SCREW D5X40 (BLACK)	4		
2	318-828	GEAR COVER	1		
3	600-1VV	BALL BEARING 6001VVCMP2L	1		
4	318-833	SECOND PINION	1		
5	318-834	FIRST GEAR	1		
6	606-ZZM	BALL BEARING 606ZZC2PS2L	1		
7	931-701	BEARING LOCK	1		
8	318-827	INNER COVER	1		
9	608-DDM	BALL BEARING 608DDC2PS2L	1		
*	10	360-528U	ARMATURE ASS'Y 110V-115V	1	INCLUD.9,15,16
*	10	360-528E	ARMATURE 220V-230V	1	
*	10	360-528F	ARMATURE 240V	1	
	11	306-840	FAN GUIDE	1	
	12	982-021	HEX. HD. TAPPING SCREW D4X70	2	
*	13	340-469C	STATOR ASS'Y 110V-115V	1	INCLUD.14
*	13	340-469G	STATOR ASS'Y 220V-230V	1	INCLUD.14
*	13	340-469E	STATOR ASS'Y 220V-230V	1	INCLUD.14 FOR NZL,AUS,GBR(230V),ITA, FRG,FRA,HOL,FIN,AUT,NOR,ESP,SUI,CHN
*	13	340-469F	STATOR ASS'Y 240V	1	INCLUD.14
	14	980-063	TERMINAL	1	
	15	313-775	DUST SEAL	1	
	16	626-VVM	BALL BEARING 626VVC2PS2L	1	
	17	985-414	FLAT FILLISTER HD. SCREW M4X10	2	
	18	607-VVC	BALL BEARING 607VVC2PS2L	1	
	19	318-830	SPINDLE	1	
	20	318-829	GEAR	1	
	21	318-831	CHUCK COVER	1	
	22	318-832	SEAL LOCK HEX. SOCKET HD. BOLT M3X12	4	
	23	936-973	FELT PACKING (A)	1	
	24	943-153	FELT PACKING	1	
	25	318-835	DRILL CHUCK 10TLRD	1	INCLUD.26
	26	319-070	CHUCK HANDLE 10TLRD	1	
	27	317-995	FLAT HD. SCREW (LEFT HAND) M5X15	1	
	28	313-777	BRUSH HOLDER	2	
	29	999-021	CARBON BRUSH (1 PAIR)	2	
	30	936-551	BRUSH CAP	2	
	31	309-929	RUBBER BUSHING	1	
	32	318-839	HOUSING ASS'Y	1	INCLUD.31
	33		NAME PLATE	1	
*	34	319-059	CONTROLLER CIRCUIT HOLDER	1	
*	34	319-060	CONTROLLER CIRCUIT HOLDER	1	FOR UAE,AUS
*	34	319-058	CONTROLLER CIRCUIT HOLDER	1	FOR GBR (110V),USA
	35	937-631	CORD CLIP	1	
	36	984-750	TAPPING SCREW (W/FLANGE) D4X16	2	
	37	305-095	TAPPING SCREW (W/FLANGE) D4X20	2	
*	38	980-063	TERMINAL	1	FOR CORD
	39	953-327	CORD ARMOR D8.8	1	
	40	318-836	TAIL COVER	1	
	41	307-811	TAPPING SCREW (W/FLANGE) D4X16 (BLACK)	2	
*	42	500-409Z	CORD	1	(CORD ARMOR D8.8)
*	42	500-468Z	CORD	1	(CORD ARMOR D8.8) FOR THA,CHN

* : ALTERNATIVE PARTS

4 - 00

PARTS

D 10YB

ITEM NO.	CODE NO.	DESCRIPTION	NO. USED	REMARKS	
*	42	500-423Z	CORD	1	(CORD ARMOR D8.8) FOR SIN,UAE
*	42	500-436Z	CORD	1	(CORD ARMOR D8.8) FOR HKG,GBR (230V)
*	42	500-439Z	CORD	1	(CORD ARMOR D8.8) FOR NZL,AUS
*	42	500-237Z	CORD	1	(CORD ARMOR D8.8) FOR GBR (110V)
*	42	500-447Z	CORD	1	(CORD ARMOR D8.8) FOR SUI
*	42	500-240Z	CORD	1	(CORD ARMOR D8.8) FOR USA
	43	HITACHI LABEL	1		
	44	318-825	SLIDE KNOB	1	
	45	318-826	SLIDE BAR	1	
*	46	314-603	SWITCH (1P SOLDER TYPE)	1	
*	46	955-509	SWITCH (1P SCREW TYPE)	1	FOR THA,INA,SIN,HKG,UAE
	47	314-429	SPRING	1	
*	48	319-061	REVERSING SWITCH	1	
*	48	318-838	REVERSING SWITCH	1	FOR THA,INA,SIN,HKG,UAE,USA
	49	959-140	CONNECTOR 50091 (10 PCS.)	2	
*	50	938-307	PILLAR TERMINAL	1	EXCEPT FOR THA,INA,SUN,HKG,UAE

