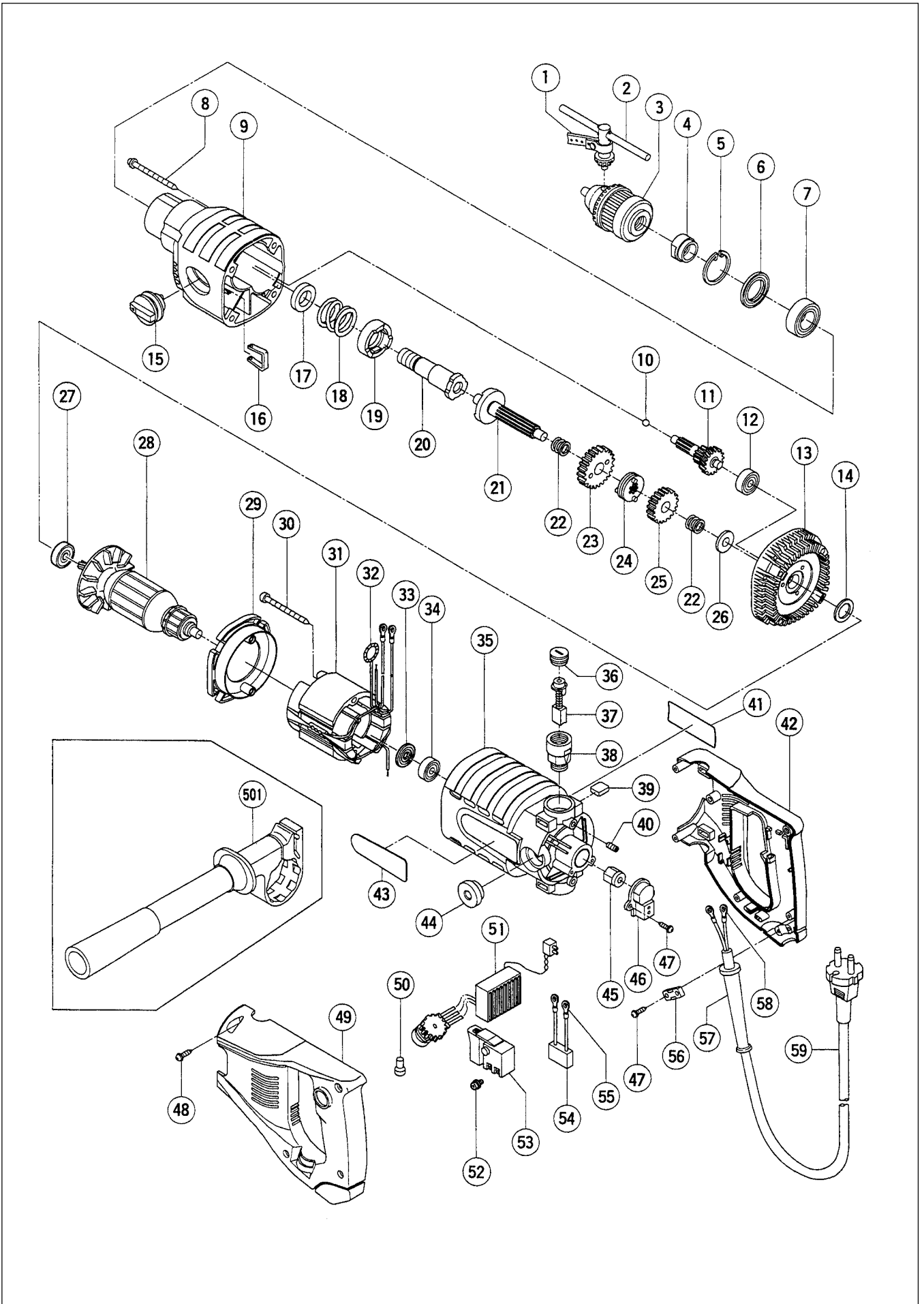


Assembly Diagram for DC 120VA



PARTS

DC 120VA

ITEM NO.	CODE NO.	DESCRIPTION	NO. USED	REMARKS	
1	950-288	VINYL BAND	1		
2	930-515	CHUCK WRENCH 10G	1		
3	950-287	DRILL CHUCK 13WLR (W/SCREW)	1		
4	309-125	NUT	1		
5	939-556	RETAINING RING FOR D35 HOLE (10 PCS.)	1		
6	981-572	DUST SEAL	1		
7	600-3VV	BALL BEARING 6003VVCMP2L	1		
8	303-281	TAPPING SCREW (W/SP. WASHER) D5X55(BLACK)	4		
9	318-735	GEAR COVER	1		
10	959-155	STEEL BALL D3.97 (10 PCS.)	1		
11	318-728	SECOND PINION	1		
12	608-VVM	BALL BEARING 608VVC2PS2L	1		
13	318-729	INNER COVER ASS'Y	1	INCLUD.12,14,27	
14	984-357	WASHER	1		
15	318-726	SHIFT LEVER	1		
16	994-396	SHIFT SPRING	1		
17	309-128	SLEEVE	1		
18	309-167	SPRING	1		
19	318-737	CLUTCH	1		
20	318-736	SPINDLE (B) ASS'Y	1	INCLUD.17-19	
21	318-722	SPINDLE (A)	1		
22	318-723	SPRING (A)	2		
23	318-725	LOW SPEED GEAR	1		
24	319-115	CLUTCH DISC	1		
25	318-724	HIGH SPEED GEAR	1		
26	318-727	WASHER (A)	1		
27	609-VVM	BALL BEARING 609VVC2PS2L	1		
*	28	360-523	ARMATURE 100V-110V	1	
*	28	360-524E	ARMATURE 230V	1	
*	28	360-524F	ARMATURE 240V	1	
29	318-718	FAN GUIDE	1		
30	991-007	TAPPING SCREW D5X60	2		
*	31	340-465C	STATOR ASS'Y 110V	1	INCLUD.32
*	31	340-465E	STATOR ASS'Y 230V	1	INCLUD.32
*	31	340-465F	STATOR ASS'Y 240V	1	INCLUD.32
32	930-703	BRUSH TERMINAL	1		
33	956-387	DUST SEAL (A)	1		
34	608-VVM	BALL BEARING 608VVC2PS2L	1		
35	318-739	HOUSING ASS'Y	1	INCLUD.38-40,44	
36	945-161	BRUSH CAP	2		
37	999-043	CARBON BRUSH (1 PAIR)	2		
38	958-900	BRUSH HOLDER	2		
39	318-734	RUBBER PIECE (B)	4		
40	938-477	HEX. SOCKET SET SCREW M5X8	2		
41		NAME PLATE	1		
42	318-719	HANDLE (A)	1		
43		HITACHI LABEL	1		
44	318-733	RUBBER PIECE (A)	2		
45	318-721	MAGNET	1		
46	995-887	MAGNET PICK UP CASE	1		
47	984-750	TAPPING SCREW (W/FLANGE) D4X16	4		

