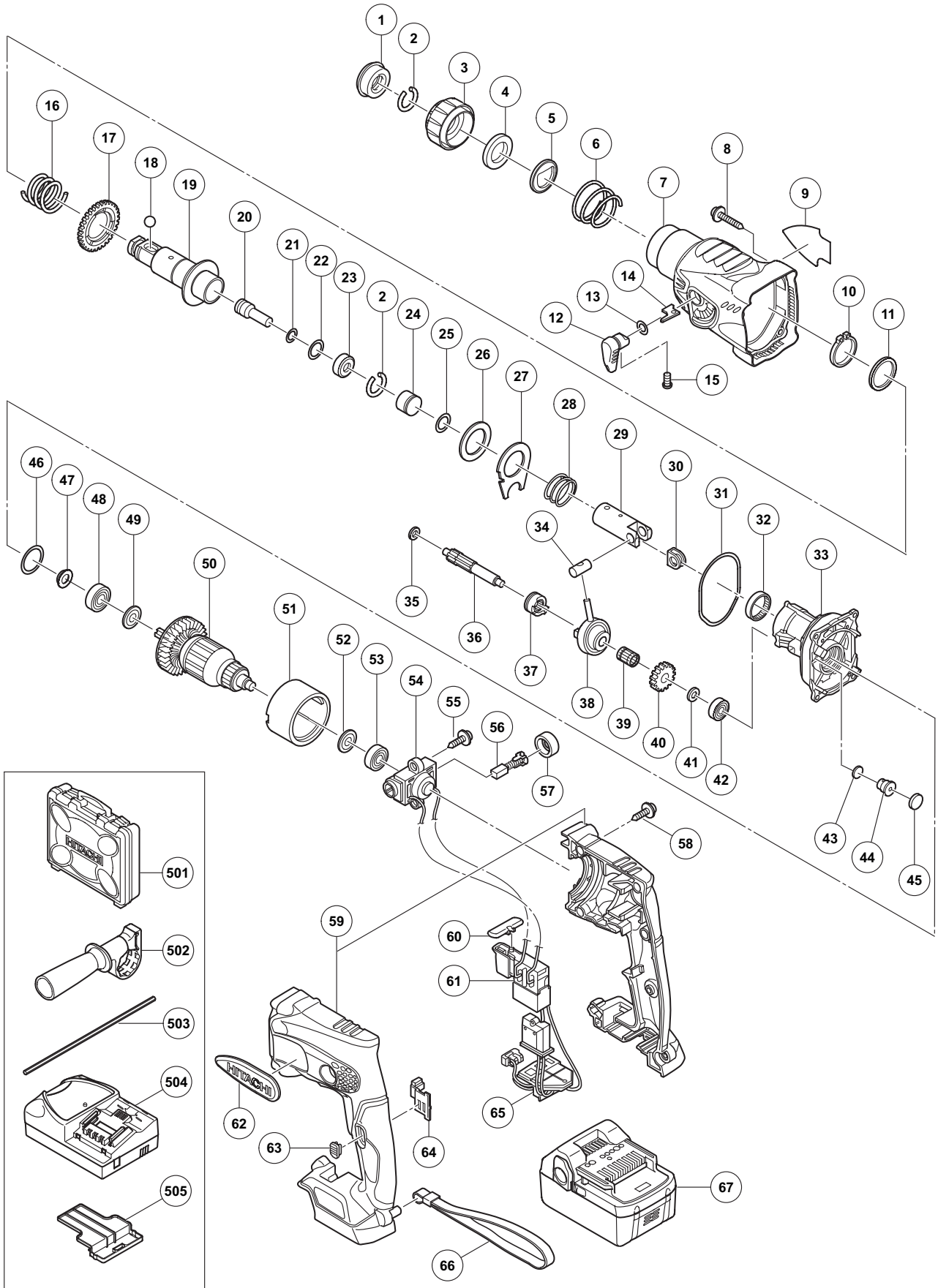


ELECTRIC TOOL PARTS LIST

CORDLESS ROTARY HAMMER Model DH 18DSL

2008·7·10
(E1)



PARTS

DH 18DSL

| ITEM NO. | CODE NO. | DESCRIPTION | NO. USED | REMARKS |
|----------|----------|--|----------|---------------|
| 1 | 306-345 | FRONT CAP | 1 | |
| 2 | 306-340 | STOPPER RING | 2 | |
| 3 | 325-597 | GRIP | 1 | |
| 4 | 327-879 | BALL HOLDER | 1 | |
| 5 | 324-526 | HOLDER PLATE | 1 | |
| 6 | 322-812 | HOLDER SPRING | 1 | |
| 7 | 325-593 | GEAR COVER | 1 | |
| 8 | 305-490 | TAPPING SCREW (W/FLANGE) D4X30 (BLACK) | 4 | |
| 9 | | NAME PLATE | 1 | |
| 10 | 965-469 | RETAINING RING FOR D25 SHAFT | 1 | |
| 11 | 944-274 | WASHER | 1 | |
| 12 | 325-594 | LEVER | 1 | |
| 13 | 872-654 | O-RING (1AP-10) | 1 | |
| 14 | 327-875 | STOPPER | 1 | |
| 15 | 949-213 | MACHINE SCREW M4X5 (10 PCS.) | 1 | |
| 16 | 306-334 | SPRING (A) | 1 | |
| 17 | 306-333 | SECOND GEAR | 1 | |
| 18 | 959-156 | STEEL BALL D7.0 (10 PCS.) | 1 | |
| 19 | 327-876 | CYLINDER | 1 | |
| 20 | 327-877 | SECOND HAMMER | 1 | |
| 21 | 301-672 | O-RING (B) | 1 | |
| 22 | 311-814 | O-RING (P-15) | 1 | |
| 23 | 327-878 | HAMMER HOLDER | 1 | |
| 24 | 325-601 | STRIKER | 1 | |
| 25 | 306-326 | O-RING (A) | 1 | |
| 26 | 327-880 | THRUST WASHER | 1 | |
| 27 | 325-588 | THRUST PLATE | 1 | |
| 28 | 306-976 | SPRING (B) | 1 | |
| 29 | 306-324 | PISTON | 1 | |
| 30 | 321-007 | WASHER (A) | 1 | |
| 31 | 325-583 | O-RING (I.D. D61) | 1 | |
| 32 | 306-328 | NEEDLE BEARING | 1 | |
| 33 | 328-479 | INNER COVER ASS'Y | 1 | INCLUD. 42-45 |
| 34 | 306-322 | PISTON PIN | 1 | |
| 35 | 325-587 | SPACER | 1 | |
| 36 | 327-871 | SECOND SHAFT | 1 | |
| 37 | 325-584 | CLUTCH | 1 | |
| 38 | 325-585 | RECIPROCATING BEARING | 1 | |
| 39 | 306-320 | NEEDLE CAGE | 1 | |
| 40 | 327-872 | FIRST GEAR | 1 | |
| 41 | 995-634 | WASHER (B) D12.5 | 1 | |
| 42 | 306-328 | NEEDLE BEARING | 1 | |
| 43 | 324-543 | FELT PACKING (A) | 1 | |
| 44 | 324-545 | VALVE | 1 | |
| 45 | 324-544 | FELT PACKING (B) | 1 | |
| 46 | 878-609 | O-RING (S-24) | 1 | |
| 47 | 306-312 | FRINGER | 1 | |
| 48 | 609-DDC | BALL BEARING 609DDC3PS2-L | 1 | |
| 49 | 958-915 | WASHER (A) | 1 | |
| 50 | 360-809 | ARMATURE DC 18V | 1 | |

PARTS

DH 18DSL

| ITEM NO. | CODE NO. | DESCRIPTION | NO. USED | REMARKS |
|----------|----------|--|----------|---------|
| 51 | 328-482 | MAGNET | 1 | |
| 52 | 980-865 | WASHER (A) | 1 | |
| 53 | 626-VVM | BALL BEARING 626VVC2PS2L | 1 | |
| 54 | 328-486 | BRUSH BLOCK | 1 | |
| 55 | 305-812 | TAPPING SCREW (W/FLANGE) D4X16 (BLACK) | 2 | |
| 56 | 999-100 | CARBON BRUSH (1 PAIR) | 2 | |
| 57 | 319-847 | BRUSH CAP | 2 | |
| 58 | 301-653 | TAPPING SCREW (W/FLANGE) D4X20 (BLACK) | 7 | |
| 59 | 330-075 | HOUSING (A). (B) SET | 1 | |
| 60 | 322-853 | PUSHING BUTTON | 1 | |
| 61 | 328-484 | DC-SPEED CONTROL SWITCH | 1 | |
| 62 | | HITACHI LABEL | 1 | |
| 63 | 326-276 | LEVER (A) | 1 | |
| 64 | 328-480 | LEVER (B) | 1 | |
| 65 | 330-074 | CONTROLLER TERMINAL SET | 1 | |
| 66 | 306-952 | STRAP (BLACK) | 1 | |
| * 67 | 330-068 | BATTERY BSL 1830 (EUROPE, AUS, NZL) | 2 | |
| * 67 | 330-067 | BATTERY BSL 1830 (USA, CAN) | 2 | |
| | | | | |
| | | | | |

STANDARD ACCESSORIES

| ITEM NO. | CODE NO. | DESCRIPTION | NO. USED | REMARKS |
|----------|----------|---------------------------|----------|---------|
| 501 | 328-703 | CASE | 1 | |
| 502 | 324-548 | SIDE HANDLE | 1 | |
| 503 | 303-709 | DEPTH GAUGE | 1 | |
| 504 | | CHARGER (MODEL UC 18YRSL) | 1 | |
| 505 | 329-897 | BATTERY COVER | 1 | |
| | | | | |
| | | | | |
| | | | | |
| | | | | |
| | | | | |
| | | | | |
| | | | | |
| | | | | |
| | | | | |
| | | | | |
| | | | | |
| | | | | |
| | | | | |
| | | | | |
| | | | | |
| | | | | |
| | | | | |
| | | | | |
| | | | | |
| | | | | |
| | | | | |

OPTIONAL ACCESSORIES

DH 18DSL

| ITEM NO. | CODE NO. | DESCRIPTION | NO. USED | REMARKS |
|----------|----------|---|----------|------------------|
| 601 | 980-927 | GREASE FOR HAMMER. HAMMER DRILL (500G) | 1 | |
| 602 | 981-840 | GREASE (A) FOR HAMMER. HAMMER DRILL (30G) | 1 | |
| 603 | 308-471 | GREASE FOR HAMMER. HAMMER DRILL (70G) | 1 | |
| 604 | 306-885 | DUST COLLECTOR (B) ASS'Y | 1 | INCLUD. 605, 613 |
| 605 | 986-802 | DUST COLLECTOR ASS'Y | 1 | INCLUD. 606-612 |
| 606 | 986-803 | DUST COVER | 1 | |
| 607 | 986-804 | SEAL COVER | 1 | |
| 608 | 948-310 | RETAINING RING FOR D30 SHAFT | 1 | |
| 609 | 958-063 | WASHER | 1 | |
| 610 | 959-150 | STEEL BALL D6.35 (10 PCS.) | 19 | |
| 611 | 986-805 | OUTER RACE | 1 | |
| 612 | 986-806 | SOCKET | 1 | |
| 613 | 306-910 | SOCKET ADAPTER (B) | 1 | |
| 614 | 971-787 | DUST CUP | 1 | |
| 615 | 931-844 | STOPPER | 1 | |
| 616 | 321-814 | DRILL CHUCK 13VLRB-D | 1 | INCLUD. 617 |
| 617 | 995-344 | FLAT HD. SCREW (A) (LEFT HAND) M6X25 | 1 | |
| 618 | 321-813 | DRILL CHUCK 13VLD-D | 1 | |
| 619 | 971-511Z | + DRIVER BIT (A) NO.2 25L | 1 | |
| 620 | 971-512Z | + DRIVER BIT (A) NO.3 25L | 1 | |
| 621 | 944-477 | COTTER | 1 | |
| 622 | 982-684 | CENTER PIN (A) 109L FOR CORE BIT D32-38 | 1 | |
| 623 | 982-685 | CENTER PIN (B) 104L FOR CORE BIT D45-90 | 1 | |
| 624 | 982-672 | CORE BIT (A) 25MM | 1 | |
| 625 | 982-673 | CORE BIT (A) 29MM | 1 | |
| 626 | 982-674 | CORE BIT (A) 32MM | 1 | INCLUD. 627 |
| 627 | 982-686 | GUIDE PLATE (FOR CORE BIT 32MM) | 1 | |
| 628 | 982-675 | CORE BIT (A) 35MM | 1 | INCLUD. 629 |
| 629 | 982-687 | GUIDE PLATE (FOR CORE BIT 35MM) | 1 | |
| 630 | 982-676 | CORE BIT (A) 38MM | 1 | INCLUD. 631 |
| 631 | 982-688 | GUIDE PLATE (FOR CORE BIT 38MM) | 1 | |
| 632 | 982-677 | CORE BIT (B) 45MM | 1 | INCLUD. 633 |
| 633 | 982-689 | GUIDE PLATE (FOR CORE BIT 45MM) | 1 | |
| 634 | 982-678 | CORE BIT (B) 50MM | 1 | INCLUD. 635 |
| 635 | 982-690 | GUIDE PLATE (FOR CORE BIT 50MM) | 1 | |
| 636 | 971-794 | ANCHOR SETTING ADAPTER A W1/4" (MANUAL) | 1 | |
| 637 | 971-795 | ANCHOR SETTING ADAPTER A W5/16" (MANUAL) | 1 | |
| 638 | 971-796 | ANCHOR SETTING ADAPTER A W3/8" (MANUAL) | 1 | |
| 639 | 971-797 | ANCHOR SETTING ADAPTER A W1/2" (MANUAL) | 1 | |
| 640 | 971-798 | ANCHOR SETTING ADAPTER A W5/8" (MANUAL) | 1 | |
| 641 | 971-799 | ANCHOR SETTING ADAPTER B W1/4" (MANUAL) | 1 | |
| 642 | 971-800 | ANCHOR SETTING ADAPTER B W5/16" (MANUAL) | 1 | |
| 643 | 971-801 | ANCHOR SETTING ADAPTER B W3/8" (MANUAL) | 1 | |
| 644 | 971-802 | ANCHOR SETTING ADAPTER B W1/2" (MANUAL) | 1 | |
| 645 | 971-803 | ANCHOR SETTING ADAPTER B W5/8" (MANUAL) | 1 | |
| 646 | 944-460 | TAPER SHANK DRILL BIT D11X100 | 1 | |
| 647 | 944-461 | TAPER SHANK DRILL BIT D12.3X110 | 1 | |
| 648 | 993-038 | TAPER SHANK DRILL BIT D12.7X110 | 1 | |
| 649 | 944-462 | TAPER SHANK DRILL BIT D14.3X110 | 1 | |
| 650 | 944-500 | TAPER SHANK DRILL BIT D14.5X110 | 1 | |

OPTIONAL ACCESSORIES

DH 18DSL

| ITEM NO. | CODE NO. | DESCRIPTION | NO USED | REMARKS |
|----------|----------|--|---------|-----------------------|
| 651 | 944-463 | TAPER SHANK DRILL BIT D17.5X120 | 1 | |
| 652 | 944-464 | TAPER SHANK DRILL BIT D21.5X140 | 1 | |
| 653 | 303-046 | BULL POINT (SDS+) 250MM (ROUND SHANK TYPE) | 1 | |
| 654 | 303-044 | CHEMICAL ANCHOR ADAPTER (SDS+) 12.7MMX90L | 1 | |
| 655 | 303-045 | CHEMICAL ANCHOR ADAPTER (SDS+) 19.0MMX100L | 1 | |
| 656 | 303-617 | TAPER SHANK ADAPTER (SDS PLUS) NO.1 | 1 | |
| 657 | 303-619 | A-TAPER SHANK ADAPTER (SDS PLUS) | 1 | |
| 658 | 303-620 | B-TAPER SHANK ADAPTER (SDS PLUS) | 1 | |
| 659 | 303-624 | CHUCK ADAPTER (D) (SDS PLUS) | 1 | |
| 660 | 303-623 | CHUCK ADAPTER (G) (SDS PLUS) | 1 | |
| 661 | 302-976 | ANCHOR SETTING ADAPTER A (SDS+) W1/4X260L | 1 | |
| 662 | 302-975 | ANCHOR SETTING ADAPTER A (SDS+) W5/16X260L | 1 | |
| 663 | 303-621 | ANCHOR SETTING ADAPTER A (SDS+) W3/8X160L | 1 | |
| 664 | 302-974 | ANCHOR SETTING ADAPTER A (SDS+) W3/8X260L | 1 | |
| 665 | 302-979 | ANCHOR SETTING ADAPTER B (SDS+) W1/4X260L | 1 | |
| 666 | 302-978 | ANCHOR SETTING ADAPTER B (SDS+) W5/16X260L | 1 | |
| 667 | 303-622 | ANCHOR SETTING ADAPTER B (SDS+) W3/8X160L | 1 | |
| 668 | 302-977 | ANCHOR SETTING ADAPTER B (SDS+) W3/8X260L | 1 | |
| 669 | 303-625 | CORE BIT SHANK (SDS PLUS) 25-38MM 105L | 1 | |
| 670 | 303-626 | CORE BIT SHANK (SDS PLUS) 25-38MM 300L | 1 | |
| 671 | 303-627 | CORE BIT SHANK (SDS PLUS) 45-90MM 300L | 1 | |
| 672 | 303-332 | HAMMER DRILL CHUCK SET 13MM | 1 | INCLUD. 673, 674 |
| 673 | 303-334 | CHUCK HANDLE | 1 | |
| 674 | 303-335 | RUBBER CAP | 1 | |
| 675 | 321-825 | DRILL CHUCK AND ADAPTER SET | 1 | INCLUD. 676, 677, 679 |
| 676 | 303-623 | CHUCK ADAPTER (G) (SDS PLUS) | 1 | |
| 677 | 321-814 | DRILL CHUCK 13VLRB-D | 1 | INCLUD. 678 |
| 678 | 987-576 | CHUCK WRENCH FOR 13VLRB-D, 13VLR-D | 1 | |
| 679 | 995-344 | FLAT HD. SCREW (A) (LEFT HAND) M6X25 | 1 | |
| 680 | 930-515 | CHUCK WRENCH 10G | 1 | |
| | | | | |
| | | | | |
| | | | | |
| | | | | |
| | | | | |
| | | | | |
| | | | | |
| | | | | |
| | | | | |
| | | | | |
| | | | | |
| | | | | |
| | | | | |
| | | | | |
| | | | | |
| | | | | |
| | | | | |
| | | | | |
| | | | | |
| | | | | |
| | | | | |
| | | | | |
| | | | | |

| ITEM NO. | CODE NO. | DESCRIPTION | NO. USED | REMARKS | |
|----------|----------|-------------|----------|---------|--|
| | | | | | |
| | | | | | |
| | | | | | |
| | | | | | |
| | | | | | |
| | | | | | |
| | | | | | |
| | | | | | |
| | | | | | |
| | | | | | |
| | | | | | |
| | | | | | |
| | | | | | |
| | | | | | |
| | | | | | |
| | | | | | |
| | | | | | |
| | | | | | |
| | | | | | |
| | | | | | |
| | | | | | |
| | | | | | |
| | | | | | |
| | | | | | |
| | | | | | |
| | | | | | |
| | | | | | |
| | | | | | |
| | | | | | |
| | | | | | |
| | | | | | |