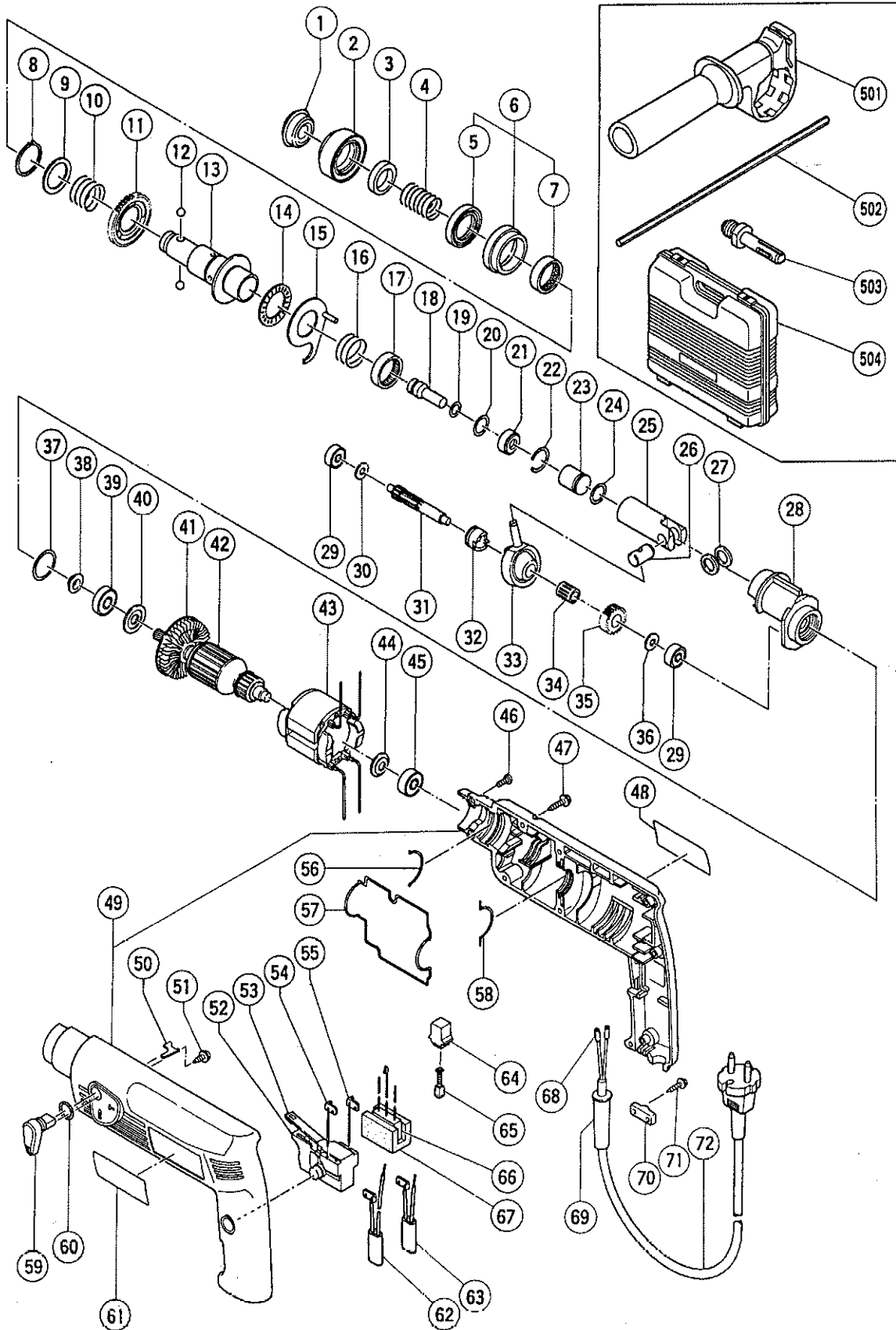


## ELECTRIC TOOL PARTS LIST

■ HAMMER DRILL  
Model DH 18VB

1995 · 1 · 30  
(E1)



## PARTS

DH18VB

ITEM NO.	CODE NO.	DESCRIPTION	NO. USED	REMARKS
1	306-345	FRONT CAP	1	
* 2	306-344	GRIP	1	
* 2	310-278	GRIP	1	FOR KOR
3	306-343	BALL HOLDER	1	
4	306-342	HOLDER SPRING	1	
5	306-337	OIL SEAL	1	
6	306-336	BUSHING ASS'Y	1	INCLUD.5,7
7	306-328	NEEDLE BEARING	1	
8	965-469	RETAINING RING FOR D25 SHAFT	1	
9	944-274	WASHER	1	
10	306-334	SPRING (A)	1	
11	306-333	SECOND GEAR	1	
12	959-156	STEEL BALL D7.0 (10 PCS.)	2	
13	306-332	CYLINDER	1	
14	306-331	THRUST NEEDLE BEARING	1	
15	306-330	THRUST PLATE	1	
16	306-976	SPRING (B)	1	
17	306-328	NEEDLE BEARING	1	
18	306-335	SECOND HAMMER	1	
19	301-672	O - RING (B)	1	
20	306-339	O - RING	1	
21	306-341	HAMMER HOLDER	1	
22	306-340	STOPPER RING	1	
23	306-325	STRIKER	1	
24	306-326	O - RING (A)	1	
25	306-324	PISTON	1	
26	306-322	PISTON PIN	1	
27	306-323	WASHER (A)	2	
28	306-327	INNER COVER	1	
29	626-VVM	BALL BEARING 626VVMC2ERPS2S	2	
30	306-321	SPACER	1	
31	306-316	SECOND SHAFT	1	
32	306-319	CLUTCH	1	
33	306-318	RECIPROCATING BEARING	1	
34	306-320	NEEDLE CAGE	1	
35	306-317	FIRST GEAR	1	
36	995-634	WASHER (B) D12.5	1	
37	878-609	O - RING (S - 24)	1	
38	306-312	FRINGER	1	
39	609-DDC	BALL BEARING 609DDC3PS2 - L	1	
40	958-915	WASHER (A)	1	
41	306-348	FAN	1	
* 42	360-364	ARMATURE ASS'Y 100V	1	INCLUD.39 - 41,44,45
* 42	360-365U	ARMATURE ASS'Y 110V - 115V	1	INCLUD.39 - 41,44,45
* 42	360-365D	ARMATURE ASS'Y 120V - 127V	1	INCLUD.41
* 42	360-365E	ARMATURE ASS'Y 220V - 230V	1	INCLUD.41
* 42	360-365F	ARMATURE ASS'Y 240V	1	INCLUD.41
* 43	340-266	STATOR (A) 100V	1	
* 43	340-322C	STATOR (A) 110V - 115V	1	
* 43	340-322D	STATOR (A) 120V - 127V	1	
* 43	340-322E	STATOR (A) 220V - 230V	1	

\*: ALTERNATIVE PARTS

## PARTS

DH18VB

ITEM NO.	CODE NO.	DESCRIPTION	NO. USED	REMARKS
* 43	340-322F	STATOR (A) 240V	1	
* 43	340-322J	STATOR (A) 110V	1	FOR GBR
* 43	340-322G	STATOR (A) 230V	1	FOR GBR,ITA,FRG,FRA,BEL,HOL,DEN,FIN,SWE, AUT,NOR,ESP,SUI,NZL
44	982-831	WASHER (A)	1	
45	608-VVM	BALL BEARING 608VVMC2EPS2L	1	
46	303-970	TAPPING SCREW (CLASS 2) D4X14	2	
47	301-653	TAPPING SCREW (W/FLANGE) D4X20 (BLACK)	7	
48		NAME PLATE	1	
* 49	310-317	HOUSING (A),(B) SET	1	
* 49	310-276	HOUSING (A),(B) SET	1	FOR KOR
50	308-347	STOPPER	1	
51	306-371	TAPPING SCREW (W/FLANGE) D3X10 (BLACK)	1	
* 52	301-690	SPEED CONTROL SWITCH ASS'Y (2P)100V - 127V	1	INCLUD.53
* 52	302-053	SPEED CONTROL SWITCH ASS'Y (2P)220V - 240V	1	INCLUD.53
53	303-781	REVERSING SWITCH	1	
* 54	306-349	INTERNAL WIRE (B)	1	
* 55	306-350	INTERNAL WIRE (B)	1	
56	306-315	RUBBER SEAL (C)	1	
57	306-313	RUBBER SEAL (A)	1	
58	306-314	RUBBER SEAL (B)	1	
* 59	306-346	LEVER	1	
* 59	310-277	LEVER	1	FOR KOR
60	872-654	O - RING (1AP - 10)	1	
61		HITACHI LABEL	1	
* 62	310-315	CHOKE COIL (A)	1	FOR NZL,GBR,SAF,ITA,FRG,FRA,BEL,HOL,DEN, FIN,SWE,AUT,NOR,ESP,SUI
* 63	310-316	CHOKE COIL (A) 310902	1	FOR NZL,GBR,SAF,ITA,FRG,FRA,BEL,HOL,DEN, FIN,SWE,AUT,NOR,ESP,SUI
64	955-203	BRUSH HOLDER	2	
* 65	999-080	CARBON BRUSH (AUTO STOP TYPE) (1 PAIR)	2	
* 65	999-041	CARBON BRUSH (1 PAIR)	2	FOR KOR
* 66	994-273	NOISE SUPPRESSOR	1	FOR NZL,GBR,SAF,ITA,FRG,FRA,BEL,HOL,DEN, FIN,SWE,AUT,NOR,ESP,KOR,SUI
* 67	930-153	SUPPORT (B)	1	FOR NOISE SUPPRESSOR
* 68	981-373	TUBE (D)	2	FOR CORD
* 69	303-662	CORD ARMOR D8.8	1	
* 69	980-193	CORD ARMOR D10.2	1	
70	937-631	CORD CLIP	1	
71	984-750	TAPPING SCREW (W/FLANGE) D4X16	2	
* 72	500-239Z	CORD	1	(CORD ARMOR D10.2)
* 72	500-227Z	CORD	1	(CORD ARMOR D8.8) FOR NGU,NZL
* 72	500-249Z	CORD	1	(CORD ARMOR D8.8) FOR USA,CAN
* 72	500-394Z	CORD	1	(CORD ARMOR D10.2) FOR SYR
* 72	500-380Z	CORD	1	(CORD ARMOR D10.2) FOR ITA,FRA,BEL,HOL, DEN,FIN,SWE,AUT,NOR,ESP,FRG,HKG,CHN
* 72	500-391Z	CORD	1	(CORD ARMOR D10.2) FOR SUI
* 72	500-235Z	CORD	1	(CORD ARMOR D8.8) FOR INA,SRN,GRE
* 72	500-424Z	CORD	1	(CORD ARMOR D8.8) FOR SIN,KUW
* 72	500-408Z	CORD	1	(CORD ARMOR D10.2) FOR AUS
* 72	500-406Z	CORD	1	(CORD ARMOR D8.8) FOR GBR (110V),SAF

\*: ALTERNATIVE PARTS

## PARTS

DH18VB

ITEM NO.	CODE NO.	DESCRIPTION	NO. USED	REMARKS
* 72	500-440Z	CORD	1	(CORD ARMOR D8.8) FOR GBR (230V)
* 72	930-055	CORD	1	(CORD ARMOR D10.2) FOR KOR

## STANDARD ACCESSORIES

ITEM NO.	CODE NO.	DESCRIPTION	NO. USED	REMARKS
501	303-659	SIDE HANDLE	1	
* 502	303-709	DEPTH GAUGE	1	
* 502	310-331	DEPTH GAUGE	1	FOR USA
* 503	303-624	CHUCK ADAPTER (D) (SDS PLUS)	1	FOR AUS
504	306-352	CASE	1	

## OPTIONAL ACCESSORIES

ITEM NO.	CODE NO.	DESCRIPTION	NO. USED	REMARKS
* 601	303-571	DRILL BIT (SDS PLUS) D4.0X110	1	FOR KOR
* 602	303-572	DRILL BIT (SDS PLUS) D4.3X110	1	FOR KOR
* 603	303-573	DRILL BIT (SDS PLUS) D4.5X110	1	FOR KOR
* 604	303-574	DRILL BIT (SDS PLUS) D4.8X110	1	FOR KOR
* 605	303-575	DRILL BIT (SDS PLUS) D5.0X110	1	FOR KOR
* 606	303-578	DRILL BIT (SDS PLUS) D5.0X160	1	FOR KOR
* 607	303-576	DRILL BIT (SDS PLUS) D5.5X110	1	FOR KOR
* 608	303-577	DRILL BIT (SDS PLUS) D6.0X110	1	FOR KOR
* 609	303-579	DRILL BIT (SDS PLUS) D6.0X160	1	FOR KOR
* 610	303-580	DRILL BIT (SDS PLUS) D6.4X160	1	FOR KOR
* 611	303-581	DRILL BIT (SDS PLUS) D6.5X160	1	FOR KOR
* 612	303-582	DRILL BIT (SDS PLUS) D7.0X160	1	FOR KOR
* 613	303-583	DRILL BIT (SDS PLUS) D7.5X160	1	FOR KOR
* 614	303-584	DRILL BIT (SDS PLUS) D8.0X160	1	FOR KOR
* 615	303-585	DRILL BIT (SDS PLUS) D8.5X160	1	FOR KOR
* 616	303-586	DRILL BIT (SDS PLUS) D9.0X160	1	FOR KOR
* 617	303-587	DRILL BIT (SDS PLUS) D9.5X160	1	FOR KOR
* 618	303-588	DRILL BIT (SDS PLUS) D10.0X160	1	FOR KOR
* 619	303-604	DRILL BIT (SDS PLUS) D10.0X260	1	FOR KOR
* 620	303-589	DRILL BIT (SDS PLUS) D10.5X160	1	FOR KOR
* 621	303-605	DRILL BIT (SDS PLUS) D10.5X260	1	FOR KOR

\* : ALTERNATIVE PARTS

OPTIONAL ACCESSORIES

DH18VB

ITEM NO.	CODE NO.	DESCRIPTION	NO. USED	REMARKS
* 622	303-590	DRILL BIT (SDS PLUS) D11.0X180	1	FOR KOR
* 623	303-591	DRILL BIT (SDS PLUS) D12.0X188	1	FOR KOR
* 624	303-606	DRILL BIT (SDS PLUS) D12.0X260	1	FOR KOR
* 625	303-592	DRILL BIT (SDS PLUS) D12.5X188	1	FOR KOR
* 626	303-607	DRILL BIT (SDS PLUS) D12.5X260	1	FOR KOR
* 627	303-593	DRILL BIT (SDS PLUS) D12.7X188	1	FOR KOR
* 628	303-608	DRILL BIT (SDS PLUS) D12.7X260	1	FOR KOR
* 629	303-594	DRILL BIT (SDS PLUS) D13.0X188	1	FOR KOR
* 630	303-595	DRILL BIT (SDS PLUS) D14.0X188	1	FOR KOR
* 631	303-596	DRILL BIT (SDS PLUS) D14.3X188	1	FOR KOR
* 632	303-609	DRILL BIT (SDS PLUS) D14.3X260	1	FOR KOR
* 633	303-597	DRILL BIT (SDS PLUS) D14.5X188	1	FOR KOR
* 634	303-610	DRILL BIT (SDS PLUS) D14.5X260	1	FOR KOR
* 635	303-598	DRILL BIT (SDS PLUS) D15.0X188	1	FOR KOR
* 636	303-599	DRILL BIT (SDS PLUS) D16.0X188	1	FOR KOR
* 637	303-611	DRILL BIT (SDS PLUS) D16.0X260	1	FOR KOR
* 638	303-600	DRILL BIT (SDS PLUS) D16.5X188	1	FOR KOR
* 639	303-601	DRILL BIT (SDS PLUS) D17.0X188	1	FOR KOR
* 640	308-485	DRILL BIT (SDS PLUS) D17.0X260	1	FOR KOR
* 641	303-602	DRILL BIT (SDS PLUS) D17.5X188	1	FOR KOR
* 642	303-612	DRILL BIT (SDS PLUS) D17.5X260	1	FOR KOR
* 643	303-603	DRILL BIT (SDS PLUS) D18.0X188	1	FOR KOR
644	306-369	DRILL BIT (SLENDER SHAFT) D3.4X90	1	
645	306-368	DRILL BIT (SLENDER SHAFT) D3.5X90	1	
646	306-370	ADAPTER FOR SLENDER SHAFT (SDS PLUS)	1	
647	944-460	TAPER SHANK DRILL BIT D11X100	1	
648	944-461	TAPER SHANK DRILL BIT D12.3X110	1	
649	993-038	TAPER SHANK DRILL BIT D12.7X110	1	
650	944-462	TAPER SHANK DRILL BIT D14.3X110	1	
651	944-500	TAPER SHANK DRILL BIT D14.5X110	1	
652	944-463	TAPER SHANK DRILL BIT D17.5X120	1	
653	303-617	TAPER SHANK ADAPTER (SDS PLUS) NO.1	1	
* 654	303-619	A - TAPER SHANK ADAPTER (SDS PLUS)	1	EXCEPT FOR KOR
* 655	303-620	B - TAPER SHANK ADAPTER (SDS PLUS)	1	EXCEPT FOR KOR
656	944-477	COTTER	1	
657	303-332	HAMMER DRILL CHUCK SET 13MM	1	INCLUD.658,659
658	303-334	CHUCK HANDLE	1	
659	303-335	RUBBER CAP	1	
660	971-794	ANCHOR SETTING ADAPTER A W1/4" (MANUAL)	1	
661	971-795	ANCHOR SETTING ADAPTER A W5/16" (MANUAL)	1	
662	971-796	ANCHOR SETTING ADAPTER A W3/8" (MANUAL)	1	
663	971-797	ANCHOR SETTING ADAPTER A W1/2" (MANUAL)	1	
664	971-799	ANCHOR SETTING ADAPTER B W1/4" (MANUAL)	1	
665	971-800	ANCHOR SETTING ADAPTER B W5/16" (MANUAL)	1	
666	971-801	ANCHOR SETTING ADAPTER B W3/8" (MANUAL)	1	
667	971-802	ANCHOR SETTING ADAPTER B W1/2" (MANUAL)	1	
668	302-976	ANCHOR SETTING ADAPTER A (SDS+)W1/4X260L	1	
669	302-975	ANCHOR SETTING ADAPTER A(SDS+)W5/16X260L	1	
670	303-621	ANCHOR SETTING ADAPTER A (SDS+)W3/8X160L	1	
671	302-974	ANCHOR SETTING ADAPTER A (SDS+)W3/8X260L	1	
672	302-979	ANCHOR SETTING ADAPTER B (SDS+)W1/4X260L	1	

\*: ALTERNATIVE PARTS

