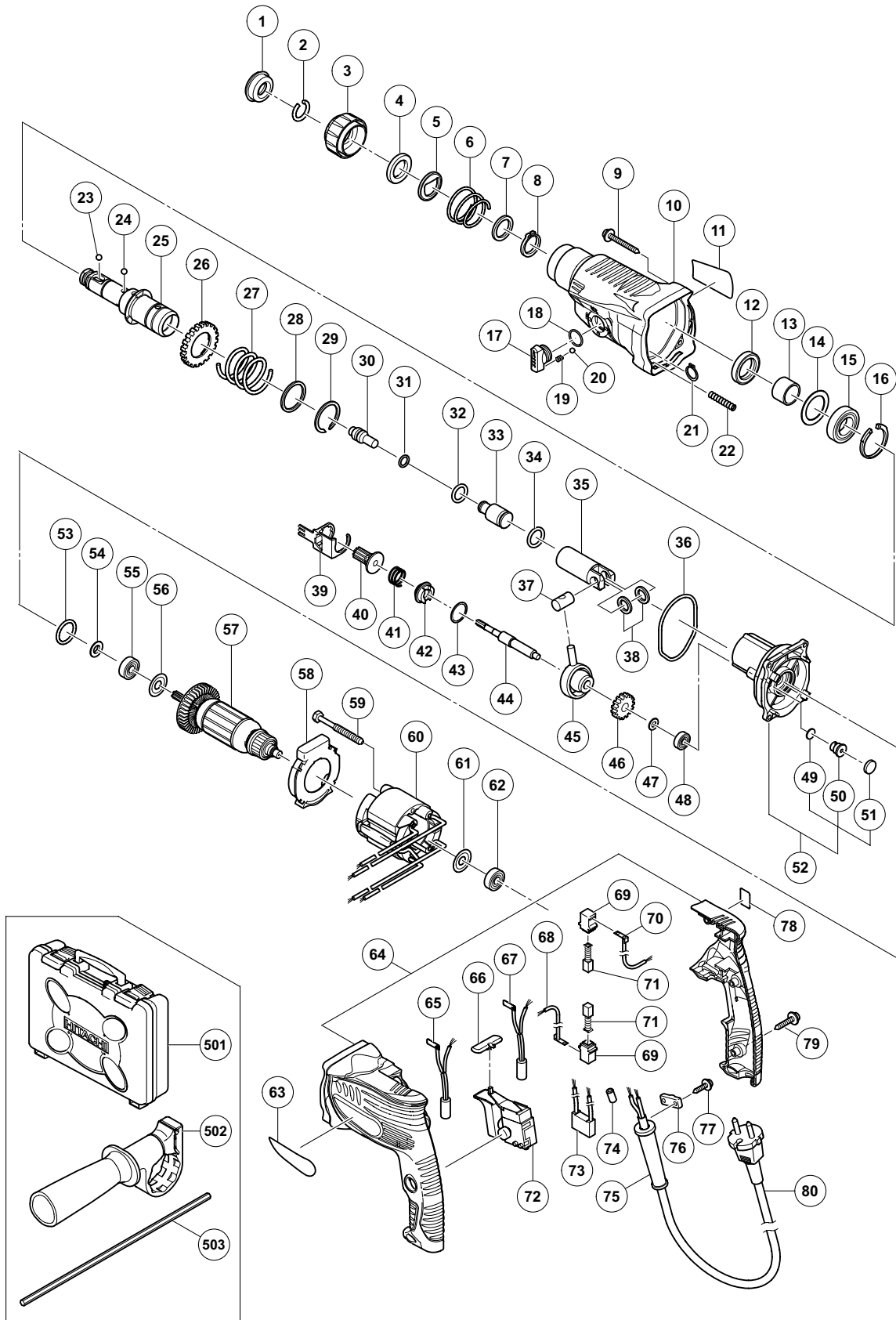


ELECTRIC TOOL PARTS LIST

ROTARY HAMMER
Model DH 22PH

2009·6·19
(E1)



PARTS

DH 22PH

ITEM NO.	CODE NO.	DESCRIPTION	NO. USED	REMARKS
1	306-345	FRONT CAP	1	
2	306-340	STOPPER RING	1	
3	325-597	GRIP	1	
4	327-879	BALL HOLDER	1	
5	324-526	HOLDER PLATE	1	
6	322-812	HOLDER SPRING	1	
7	984-118	WASHER (B)	1	
8	939-547	RETAINING RING FOR D20 SHAFT (10 PCS.)	1	
9	305-490	TAPPING SCREW (W/FLANGE) D4 X 30 (BLACK)	4	
10	331-520	GEAR COVER (A)	1	
11		NAME PLATE	1	
12	307-688	OIL SEAL	1	
13	331-301	SLEEVE	1	
14	323-232	FELT PACKING (B)	1	
15	690-4DD	BALL BEARING 6904DDPS2L	1	
16	322-813	RETAINING RING 37MM	1	
17	331-303	CHANGE LEVER	1	
18	319-567	O-RING (S-15)	1	
19	331-306	SPRING (H)	1	
20	959-155	STEEL BALL D3.97 (10 PCS.)	1	
21	331-305	RETAINING RING D15	1	
22	331-302	SPRING (C)	1	
23	959-156	STEEL BALL D7.0 (10 PCS.)	1	
24	959-154	STEEL BALL D5.556 (10 PCS.)	3	
25	331-307	CYLINDER	1	
26	331-309	SECOND GEAR	1	
27	331-310	SPRING (A)	1	
28	331-311	WASHER (A)	1	
29	320-846	RETAINING RING D28	1	
30	331-312	SECOND HAMMER	1	
31	301-672	O-RING (B)	1	
32	331-308	O-RING (A)	1	
33	331-296	STRIKER	1	
34	301-670	O-RING (A)	1	
35	331-300	PISTON	1	
36	327-870	O-RING (A)	1	
37	322-798	PISTON PIN	1	
38	322-799	WASHER (C)	2	
39	331-313	LOCK PLATE	1	
40	323-181	SECOND PINION	1	
41	323-182	CLUTCH SPRING	1	
42	331-314	CLUTCH	1	
43	331-315	WASHER	1	
44	331-297	SECOND SHAFT	1	
45	331-298	RECIPROCATING BEARING	1	
46	331-299	FIRST GEAR	1	
47	995-634	WASHER (B) D12.5	1	
48	626-VVM	BALL BEARING 626VVC2PS2L	1	
49	324-543	FELT PACKING (A)	1	
50	324-545	VALVE	1	

PARTS

DH 22PH

ITEM NO.	CODE NO.	DESCRIPTION	NO. USED	REMARKS
51	324-544	FELT PACKING (B)	1	
52	331-521	INNER COVER ASS'Y (A)	1	INCLUD. 49-51
53	878-609	O-RING (S-24)	1	
54	306-312	FRINGER	1	
55	609-DDC	BALL BEARING 609DDC3PS2-L	1	
56	958-915	WASHER (A)	1	
* 57	360-798U	ARMATURE ASS'Y 110V-120V	1	INCLUD. 54-56, 61, 62
* 57	360-798E	ARMATURE 220V-230V	1	
* 57	360-798F	ARMATURE 240V	1	
58	327-868	FAN GUIDE	1	
59	981-824	HEX. HD. TAPPING SCREW D4 X 45	2	
* 60	340-701C	STATOR 110V-120V	1	
* 60	340-701G	STATOR 110V	1	FOR TPE
* 60	340-701E	STATOR 220V-230V	1	
* 60	340-701F	STATOR 240V	1	
61	982-631	WASHER (A)	1	
62	608-VVM	BALL BEARING 608VVC2PS2L	1	
63		HITACHI LABEL	1	
64	331-669	HOUSING. HANDLE COVER SET	1	
* 65	324-549	CHOKE COIL (A) BROWN	1	EXCEPT FOR VEN, THA, IND, SYR, INA, SIN, KUW, USA, CAN, MEX, HKG
66	322-853	PUSHING BUTTON	1	
* 67	324-551	CHOKE COIL (A) BLUE	1	EXCEPT FOR VEN, THA, IND, SYR, INA, SIN, KUW, USA, CAN, MEX, HKG
* 68	324-538	INTERNAL WIRE (A) (BLUE)	1	FOR VEN, THA, IND, SYR, INA, SIN, KUW, USA, CAN, MEX, HKG
69	955-203	BRUSH HOLDER	2	
* 70	324-537	INTERNAL WIRE (A) (BROWN)	1	FOR VEN, THA, IND, SYR, INA, SIN, KUW, USA, CAN, MEX, HKG
71	999-041	CARBON BRUSH (1 PAIR)	2	
72	331-454	SWITCH (1P PILLAR TYPE)	1	
* 73	930-039	NOISE SUPPRESSOR	1	EXCEPT FOR VEN, THA, IND, SYR, INA, SIN, KUW, USA, CAN, MEX, HKG
* 74	981-373	TUBE (D)	2	FOR CORD
* 75	953-327	CORD ARMOR D8.8	1	
* 75	938-051	CORD ARMOR D10.1	1	
76	937-631	CORD CLIP	1	
77	984-750	TAPPING SCREW (W/FLANGE) D4 X 16	2	
* 78		LABEL (YEARS MARK)	1	FOR CHN
79	301-653	TAPPING SCREW (W/FLANGE) D4 X 20 (BLACK)	3	
* 80	500-390Z	CORD	1	(CORD ARMOR D8.8)
* 80	500-247Z	CORD	1	(CORD ARMOR D8.8) FOR SAF, AUT, FIN, NOR, SWE, DEN
* 80	500-201Z	CORD	1	(CORD ARMOR D10.1) FOR VEN
* 80	500-239Z	CORD	1	(CORD ARMOR D10.1) FOR THA
* 80	500-235Z	CORD	1	(CORD ARMOR D8.8) FOR IND
* 80	500-447Z	CORD	1	(CORD ARMOR D8.8) FOR SYR
* 80	500-234Z	CORD	1	(CORD ARMOR D8.8) FOR INA
* 80	500-423Z	CORD	1	(CORD ARMOR D8.8) FOR SIN
* 80	500-422Z	CORD	1	(CORD ARMOR D8.8) FOR KUW

PARTS

DH 22PH

ITEM NO.	CODE NO.	DESCRIPTION	NO. USED	REMARKS	
* 80	500-240Z	CORD	1	(CORD ARMOR D8.8) FOR USA, CAN, MEX	
* 80	500-465Z	CORD	1	(CORD ARMOR D8.8) FOR GBR (110V)	
* 80	500-446Z	CORD	1	(CORD ARMOR D8.8) FOR GBR (230V)	
* 80	500-456Z	CORD	1	(CORD ARMOR D8.8) FOR CHN	
* 80	500-440Z	CORD	1	(CORD ARMOR D8.8) FOR HKG	
* 80	323-974	CORD	1	(CORD ARMOR D10.1) FOR TPE	
* 80	500-475Z	CORD	1	(CORD ARMOR D8.8) FOR KOR	

STANDARD ACCESSORIES

ITEM NO.	CODE NO.	DESCRIPTION	NO. USED	REMARKS	
501	331-439	CASE	1		
502	324-548	SIDE HANDLE	1		
* 503	303-709	DEPTH GAUGE	1		
* 503	310-331	DEPTH GAUGE	1	FOR USA, CAN, MEX	

OPTIONAL ACCESSORIES

DH 22PH

ITEM NO.	CODE NO.	DESCRIPTION	NO. USED	REMARKS
601	308-471	GREASE FOR HAMMER. HAMMER DRILL (70G)	1	
602	980-927	GREASE FOR HAMMER. HAMMER DRILL (500G)	1	
603	981-840	GREASE (A) FOR HAMMER. HAMMER DRILL (30G)	1	
604	321-814	DRILL CHUCK 13VLRB-D	1	INCLUD. 605
605	995-344	FLAT HD. SCREW (A) (LEFT HAND) M6 X 25	1	
606	971-511Z	+ DRIVER BIT (A) NO. 2 25L	1	
607	971-512Z	+ DRIVER BIT (A) NO. 3 25L	1	
608	981-122	SPECIAL SCREW M6 X 22	1	
609	971-794	ANCHOR SETTING ADAPTER A W1/4" (MANUAL)	1	
610	971-795	ANCHOR SETTING ADAPTER A W5/16" (MANUAL)	1	
611	971-796	ANCHOR SETTING ADAPTER A W3/8" (MANUAL)	1	
612	971-797	ANCHOR SETTING ADAPTER A W1/2" (MANUAL)	1	
613	971-798	ANCHOR SETTING ADAPTER A W5/8" (MANUAL)	1	
614	971-799	ANCHOR SETTING ADAPTER B W1/4" (MANUAL)	1	
615	971-800	ANCHOR SETTING ADAPTER B W5/16" (MANUAL)	1	
616	971-801	ANCHOR SETTING ADAPTER B W3/8" (MANUAL)	1	
617	971-802	ANCHOR SETTING ADAPTER B W1/2" (MANUAL)	1	
618	971-803	ANCHOR SETTING ADAPTER B W5/8" (MANUAL)	1	
619	944-477	COTTER	1	
620	303-046	BULL POINT (SDS+) 250MM (ROUND SHANK TYPE)	1	
621	302-976	ANCHOR SETTING ADAPTER A (SDS+) W1/4 X 260L	1	
622	302-975	ANCHOR SETTING ADAPTER A(SDS+) W5/16 X 260L	1	
623	303-621	ANCHOR SETTING ADAPTER A (SDS+) W3/8 X 160L	1	
624	302-974	ANCHOR SETTING ADAPTER A (SDS+) W3/8 X 260L	1	
625	302-979	ANCHOR SETTING ADAPTER B (SDS+) W1/4 X 260L	1	
626	302-978	ANCHOR SETTING ADAPTER B (SDS+) W5/16 X 260L	1	
627	303-622	ANCHOR SETTING ADAPTER B (SDS+) W3/8 X 160L	1	
628	302-977	ANCHOR SETTING ADAPTER B (SDS+) W3/8 X 260L	1	
629	303-334	CHUCK HANDLE	1	
630	930-515	CHUCK WRENCH 10G	1	
631	303-332	HAMMER DRILL CHUCK SET 13MM	1	INCLUD. 632, 633
632	303-334	CHUCK HANDLE	1	
633	303-335	RUBBER CAP	1	
634	321-813	DRILL CHUCK 13VLD-D	1	
635	320-859	SYRINGE (BLOW-OUT BULB TYPE)	1	
636	303-617	TAPER SHANK ADAPTER (SDS PLUS) NO. 1	1	
637	303-618	TAPER SHANK ADAPTER (SDS PLUS) NO. 2	1	
638	303-619	A-TAPER SHANK ADAPTER (SDS PLUS)	1	
639	303-620	B-TAPER SHANK ADAPTER (SDS PLUS)	1	
640	303-624	CHUCK ADAPTER (D) (SDS PLUS)	1	
641	303-623	CHUCK ADAPTER (G) (SDS PLUS)	1	
642	321-825	DRILL CHUCK AND ADAPTER SET	1	
643	306-369	DRILL BIT (SLENDER SHAFT) D3.4 X 90	1	
644	306-368	DRILL BIT (SLENDER SHAFT) D3.5 X 90	1	
645	306-370	ADAPTER FOR SLENDER SHAFT (SDS PLUS)	1	
646	944-460	TAPER SHANK DRILL BIT D11 X 100	1	
647	944-461	TAPER SHANK DRILL BIT D12.3 X 110	1	
648	993-038	TAPER SHANK DRILL BIT D12.7 X 110	1	
649	944-462	TAPER SHANK DRILL BIT D14.3 X 110	1	
650	944-500	TAPER SHANK DRILL BIT D14.5 X 110	1	

