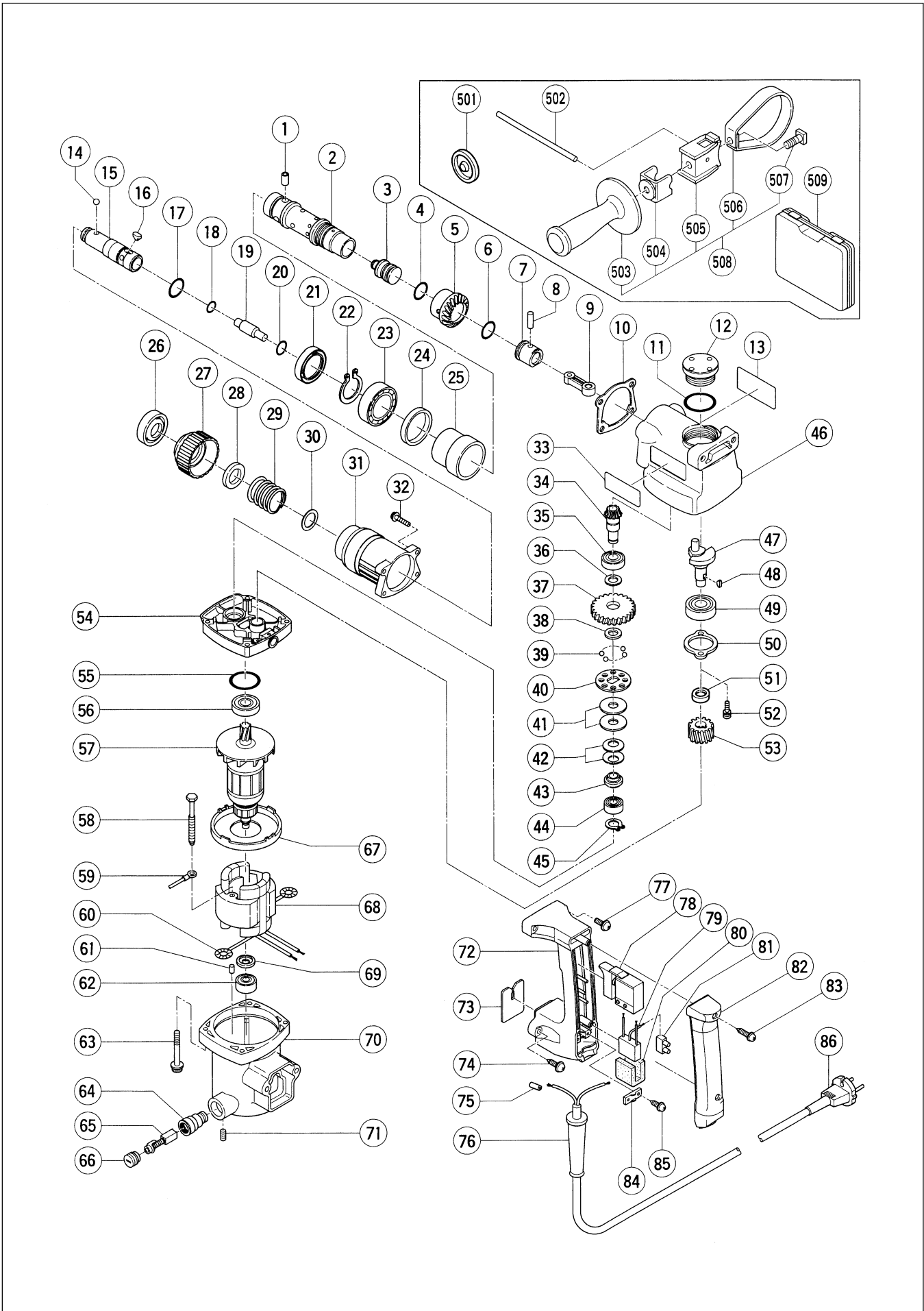


Assembly Diagram for DH 25PA



## PARTS

DH 25PA

ITEM NO.	CODE NO.	DESCRIPTION	NO. USED	REMARKS
1	318-200	NEEDLE PIN	3	
2	318-022	CYLINDER	1	
3	318-024	STRIKER	1	
4	971-760	O-RING	1	
5	992-933	THIRD GEAR	1	
6	971-760	O-RING	1	
7	992-930	PISTON	1	
8	992-931	PISTON PIN	1	
9	318-020	CONNECTING ROD	1	
10	980-896	SEAL PACKING (B)	1	
11	980-948	O-RING	1	
12	980-880	OIL CAP	1	
13		NAME PLATE	1	
14	959-156	STEEL BALL D7.0 (10 PCS.)	1	
15	318-023	RETAINER SLEEVE	1	
16	318-026	NEEDLE	3	
17	980-890	O-RING (D)	1	
18	318-199	O-RING	1	
19	318-025	SECOND HAMMER	1	
20	301-680	O-RING (FPM 810)	1	
21	318-027	OIL SEAL	1	
22	948-310	RETAINING RING FOR D30 SHAFT	1	
23	690-6BB	BALL BEARING 6906	1	
24	992-906	URETHANE RING	1	
25	980-891	PIPE	1	
26	318-028	FRONT CAP	1	
27	318-029	GRIP	1	
28	318-030	BALL HOLDER	1	
29	306-342	HOLDER SPRING	1	
30	984-118	WASHER (B)	1	
31	318-021	CYLINDER CASE	1	
32	992-253	HEX. SOCKET HD. BOLT (W/FLANGE) M5X25	4	
33		HITACHI LABEL	1	
34	992-914	THIRD PINION	1	
35	600-1DD	BALL BEARING 6001DDCMPS2L	1	
36	992-503	WASHER	1	
37	992-928	SECOND GEAR	1	
38	971-087	STOPPER WASHER	1	
39	959-155	STEEL BALL D3.97 (10 PCS.)	8	
40	992-916	CLUTCH PLATE	1	
41	992-926	SPRING PLATE	2	
42	980-877	BELLEVILLE SPRING	2	
43	992-504	BUSHING	1	
44	608-VVM	BALL BEARING 608VVC2PS2L	1	
45	940-079	RETAINING RING FOR D8 SHAFT	1	
46	980-920	CRANK CASE	1	
47	318-038	CRANK SHAFT	1	
48	940-220	WOODRUFF KEY 2.5X8	1	
49	620-2DD	BALL BEARING 6202DDCMPS2L	1	
50	980-871	BEARING COVER	1	
51	318-040	DISTANCE COLLAR	1	

\* : ALTERNATIVE PARTS

8 - 99





**OPTIONAL ACCESSORIES**

DH 25PA

ITEM NO.	CODE NO.	DESCRIPTION	NO. USED	REMARKS
628	303-608	DRILL BIT (SDS PLUS) D12.7X260	1	
629	303-594	DRILL BIT (SDS PLUS) D13.0X166	1	
630	303-595	DRILL BIT (SDS PLUS) D14.0X166	1	
631	303-596	DRILL BIT (SDS PLUS) D14.3X166	1	
632	303-609	DRILL BIT (SDS PLUS) D14.3X260	1	
633	303-597	DRILL BIT (SDS PLUS) D14.5X166	1	
634	303-610	DRILL BIT (SDS PLUS) D14.5X260	1	
635	303-598	DRILL BIT (SDS PLUS) D15.0X166	1	
636	303-599	DRILL BIT (SDS PLUS) D16.0X166	1	
637	303-611	DRILL BIT (SDS PLUS) D16.0X260	1	
638	303-600	DRILL BIT (SDS PLUS) D16.5X166	1	
639	303-601	DRILL BIT (SDS PLUS) D17.0X166	1	
640	308-485	DRILL BIT (SDS PLUS) D17.0X260	1	
641	303-602	DRILL BIT (SDS PLUS) D17.5X166	1	
642	303-612	DRILL BIT (SDS PLUS) D17.5X260	1	
643	303-603	DRILL BIT (SDS PLUS) D18.0X166	1	
644	303-613	DRILL BIT (SDS PLUS) D19.0X260	1	
645	303-614	DRILL BIT (SDS PLUS) D20.0X250	1	
646	303-615	DRILL BIT (SDS PLUS) D22.0X250	1	
647	308-486	DRILL BIT (SDS PLUS) D24.0X250	1	
648	303-616	DRILL BIT (SDS PLUS) D25.0X450	1	
649	944-460	TAPER SHANK DRILL BIT D11X100	1	
650	944-461	TAPER SHANK DRILL BIT D12.3X110	1	
651	993-038	TAPER SHANK DRILL BIT D12.7X110	1	
652	944-462	TAPER SHANK DRILL BIT D14.3X110	1	
653	944-500	TAPER SHANK DRILL BIT D14.5X110	1	
654	944-463	TAPER SHANK DRILL BIT D17.5X120	1	
655	944-464	TAPER SHANK DRILL BIT D21.5X140	1	
656	303-617	TAPER SHANK ADAPTER (SDS PLUS) NO.1	1	
657	303-618	TAPER SHANK ADAPTER (SDS PLUS) NO.2	1	
658	944-477	COTTER	1	
659	302-976	ANCHOR SETTING ADAPTER A (SDS+)W1/4X260L	1	
660	302-975	ANCHOR SETTING ADAPTER A(SDS+)W5/16X260L	1	
661	303-621	ANCHOR SETTING ADAPTER A (SDS+)W3/8X160L	1	
662	302-974	ANCHOR SETTING ADAPTER A (SDS+)W3/8X260L	1	
663	302-979	ANCHOR SETTING ADAPTER B (SDS+)W1/4X260L	1	
664	302-978	ANCHOR SETTING ADAPTER B(SDS+)W5/16X260L	1	
665	303-622	ANCHOR SETTING ADAPTER B (SDS+)W3/8X160L	1	
666	302-977	ANCHOR SETTING ADAPTER B (SDS+)W3/8X260L	1	
667	971-794	ANCHOR SETTING ADAPTER A W1/4" (MANUAL)	1	
668	971-795	ANCHOR SETTING ADAPTER A W5/16"(MANUAL)	1	
669	971-796	ANCHOR SETTING ADAPTER A W3/8"(MANUAL)	1	
670	971-797	ANCHOR SETTING ADAPTER A W1/2" (MANUAL)	1	
671	971-798	ANCHOR SETTING ADAPTER A W5/8" (MANUAL)	1	
672	971-799	ANCHOR SETTING ADAPTER B W1/4" (MANUAL)	1	
673	971-800	ANCHOR SETTING ADAPTER B W5/16" (MANUAL)	1	
674	971-801	ANCHOR SETTING ADAPTER B W3/8" (MANUAL)	1	
675	971-802	ANCHOR SETTING ADAPTER B W1/2" (MANUAL)	1	
676	971-803	ANCHOR SETTING ADAPTER B W5/8" (MANUAL)	1	
677	303-044	CHEMICAL ANCHOR ADAPTER (SDS+)12.7MMX90L	1	
678	303-045	CHEMICAL ANCHOR ADAPTER(SDS+)19.0MMX100L	1	

