

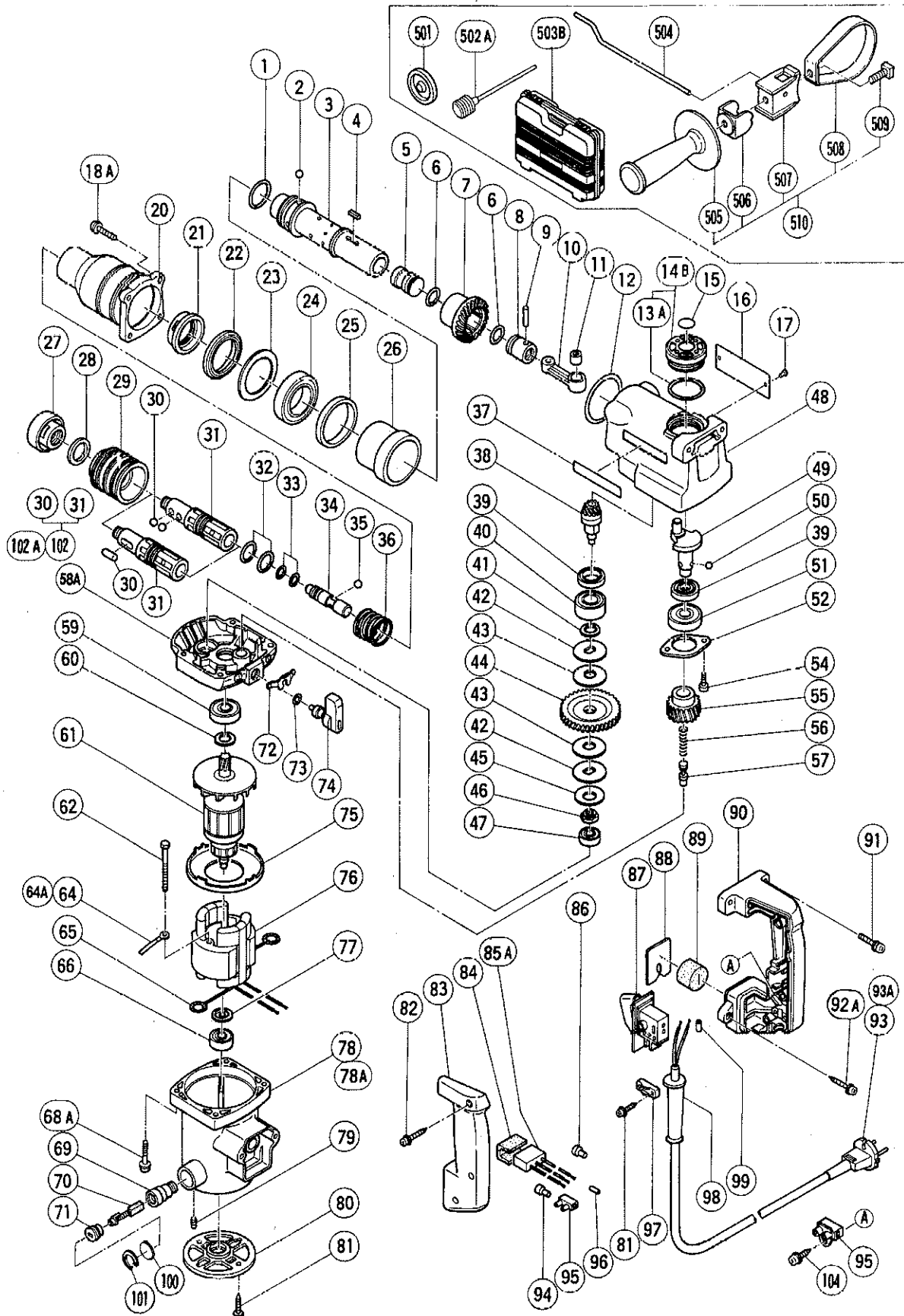
# HITACHI

LIST NO. 0480

## ELECTRIC TOOL PARTS LIST

■ HAMMER DRILL  
Model DH 25V

1997 · 4 · 15  
(E5)



## PARTS

DH 25V

ITEM NO.	CODE NO.	DESCRIPTION	NO. USED	REMARKS
1	872-767	O - RING (S - 32)	1	
2	944-941	STEEL BALL D7.94	3	
3	982-649	CYLINDER	1	
4	982-696	FEATHER KEY 3X3X15	2	
5	982-651	STRIKER	1	
6	971-760	O - RING	2	
7	982-650	THIRD GEAR	1	
8	982-648	PISTON	1	
9	971-821	PISTON PIN	1	
10	982-647	CONNECTING ROD ASS'Y	1	INCLUD.11
11	956-406	NEEDLE BEARING (NTN 8Q - HK08 10D)	1	
12	980-744	O - RING (S - 55)	1	
13A	314-030	O - RING	1	
14B	314-031	OIL CAP ASS'Y <i>ord. 990-945</i>	1	INCLUD.13A
* 15	980-934Z	CAUTION PLATE (ENGLISH)	1	
* 15	992-830	CAUTION PLATE (GERMAN)	1	FOR FRG,AUT,SUI
16		NAME PLATE	1	
17	949-510	RIVET D2.5X4.8 (10 PCS.)	2	
18A	992-253	HEX. SOCKET HD. BOLT (W/FLANGE) M5X25	4	
20	984-061Z	CYLINDER CASE	1	
21	982-660	CYLINDER CAP	1	
22	982-659	OIL SEAL	1	
23	982-658	WASHER (B)	1	
24	690-7BB	BALL BEARING 6907	1	
25	982-661	URETHANE RING	1	
26	982-656	PIPE	1	
27	971-769	FRONT CAP	1	
28	982-697	URETHANE WASHER	1	
29	982-663	SLIDE GRIP	1	
* 30	971-812	NEEDLE ROLLER	2	
* 30	959-151	STEEL BALL D7.14 (10 PCS.)	4	
* 31	984-068	RETAINER SLEEVE (E) (FOR ROUND SHANK)	1	FOR NEEDLE ROLLER TYPE
* 31	984-581	RETAINER SLEEVE (C) (FOR SQUARE SHANK)	1	FOR NEEDLE ROLLER TYPE
* 31	984-062Z	RETAINER SLEEVE (B) (FOR SQUARE SHANK)	1	FOR STEEL BALL TYPE
32	982-655	O - RING (A)	2	
33	982-653	O - RING (B)	2	
34	982-652	SECOND HAMMER	1	
35	959-151	STEEL BALL D7.14 (10 PCS.)	3	
36	982-662	SPRING	1	
37	957-561	HITACHI LABEL	1	
38	982-641	THIRD PINION SLEEVE	1	
39	981-851	OIL SEAL (B)	2	
40	600-2VV	BALL BEARING 6002VVMCPS2S	1	
41	982-640	WASHER	1	
42	982-643	SLIP PLATE	2	
43	982-642	CLUTCH PLATE	2	
44	982-645	SECOND GEAR	1	
45	982-644	BELLEVILLE SPRING	1	
46	982-639	SPECIAL NUT M10	1	
47	627-VVM	BALL BEARING 627VVMC2EPS2S	1	
48	984-060Z	CRANK CASE	1	

\*: ALTERNATIVE PARTS

## PARTS

DH 25V

ITEM NO.	CODE NO.	DESCRIPTION	NO. USED	REMARKS	
49	986-271	CRANK SHAFT	1		
50	959-154	STEEL BALL D5.556 (10 PCS.)	3		
51	620-2VV	BALL BEARING 6202VVCMP2S	1		
52	982-638	BEARING COVER	1		
54	983-162	SEAL LOCK HEX. SOCKET HD. BOLT M4X12	2		
55	986-272	FIRST GEAR	1		
56	986-270	SPRING	1		
57	986-273	CLUTCH SHAFT	1		
58A	986-278	GEAR COVER	1		
59	600-1VV	BALL BEARING 6001VVCMP2L	1		
60	971-736	WASHER (B)	1		
*	61	984-170U	ARMATURE ASS'Y 110V - 115V	1	INCLUD.59,60,66,77
*	61	984-170E	ARMATURE 220V - 230V	1	
*	61	984-170F	ARMATURE 240V	1	
62	953-174	HEX. HD. TAPPING SCREW D5X55	2		
*	64	986-277	INTERNAL WIRE	1	
*	64	971-776	INTERNAL WIRE	1	FOR SUI
*	64A	314-136	INTERNAL WIRE	1	FOR FIN
65	930-630	BRUSH TERMINAL	2		
66	608-VVM	BALL BEARING 608VVMC2EPS2L	1		
68A	992-254	HEX. SOCKET HD. BOLT (W/FLANGE) M5X50	4		
69	990-721	BRUSH HOLDER	2		
70	999-084	CARBON BRUSH (AUTO STOP TYPE) (1 PAIR)	2		
71	937-847	BRUSH CAP	2		
72	986-276	STOPPER SPRING	1		
73	872-854	O - RING (1AP - 10)	1		
74	986-275	CHANGE LEVER	1		
75	980-931	FAN GUIDE	1		
*	76	984-064P	STATOR ASS'Y 115V	1	INCLUD.65
*	76	984-064K	STATOR ASS'Y 220V - 230V	1	INCLUD.65
*	76	984-064N	STATOR ASS'Y 240V	1	INCLUD.65
*	76	984-064L	STATOR ASS'Y 240V	1	INCLUD.65 FOR AUS
77	982-631	WASHER (A)	1		
*	78	992-821	HOUSING ASS'Y	1	INCLUD.69,79 (TILL 2.1985 FOR AUS ONLY)
*	78A	992-831	HOUSING ASS'Y	1	INCLUD.69,79 SINCE 3.1985 FOR AUS
79	938-477	HEX. SOCKET SET SCREW M5X8	2		
80	984-058	TAIL COVER	1		
81	930-446	TAPPING SCREW (W/WASHER) D4X16	4		
82	956-636	TAPPING SCREW (W/WASHER) D4X25	3		
83	980-924Z	HANDLE COVER (B)	1		
*	84	930-153	SUPPORT (B)	1	FOR NOISE SUPPRESSOR
*	85A	994-273	NOISE SUPPRESSOR	1	
*	86	959-141	CONNECTOR 50092 (10 PCS.)	1	
*	87	980-922Z	SWITCH (2P PILLAR TYPE) W/LOCK	1	
*	87	995-256	SWITCH (2P PILLAR TYPE) W/LOCK	1	FOR USA
88	980-900	PLATE	1		
89	971-816	HANDLE PACKING	1	TILL 6.1986	
90	980-923Z	HANDLE (B)	1		
91	986-274	MACHINE SCREW (W/WASHERS) M5X25	2		
92A	985-620	TAPPING SCREW (W/FLANGE) D5X25	2		
*	93	500-239Z	CORD	1	(CORD ARMOR D10.1)

\*: ALTERNATIVE PARTS

**PARTS**

DH 25V

ITEM NO.	CODE NO.	DESCRIPTION	NO. USED	REMARKS
* 93	500-227Z	CORD	1	(CORD ARMOR D8.8) FOR NGU,NZL
* 93	500-232Z	CORD	1	(CORD ARMOR D8.8) FOR GBR,SAF
* 93	500-235Z	CORD	1	(CORD ARMOR D8.8) FOR INA,KOR
* 93	500-390Z	CORD	1	(CORD ARMOR D10.1) FOR ITA,FRG,FRA,HOL, DEN,SWE,FIN,AUT,NOR,CHN
* 93	500-391Z	CORD	1	(CORD ARMOR D10.1) FOR SUI
* 93	500-394Z	CORD	1	(CORD ARMOR D10.1) FOR SYR
* 93	500-408Z	CORD	1	(CORD ARMOR D8.8) FOR AUS
* 93	500-249Z	CORD	1	(CORD ARMOR D8.8) FOR USA
* 93A	500-424Z	CORD	1	(CORD ARMOR D8.8) FOR SIN
* 94	959-140	CONNECTOR 50091 (10 PCS.)	1	
* 95	938-307	PILLAR TERMINAL	1	EXCEPT FOR NZL,SAF
* 95	310-290	HOLDER PLATE	1	FOR CHN
* 96	981-373	TUBE (D)	1	FOR NOISE SUPPRESSOR
97	960-266	CORD CLIP	1	
* 98	953-327	CORD ARMOR D8.8	1	
* 98	938-051	CORD ARMOR D10.1	1	
* 99	981-373	TUBE (D)	1	FOR CORD
* 100	992-832	WASHER	2	FOR AUS
* 101	939-552	RETAINING RING FOR D19 HOLE (10 PCS.)	2	FOR AUS
* 102	984-067	RETAINER SLEEVE ASS'Y (FOR SQUARE SHANK)	1	INCLUD.30,31 FOR NEEDLE ROLLER TYPE
* 102A	995-255	RETAINER SLEEVE(E)ASS'Y(FOR ROUND SHANK)	1	INCLUD.30,31 FOR NEEDLE ROLLER TYPE
* 104	309-470	TAPPING SCREW (W/FLANGE) D4X12 (BLACK)	1	FOR CHN

**STANDARD ACCESSORIES**

ITEM NO.	CODE NO.	DESCRIPTION	NO. USED	REMARKS
501	971-787	DUST CUP	1	
502A		SYRINGE	1	
503B	312-645	CASE	1	
504	982-671	STOPPER ROD	1	
505	980-901	SIDE HANDLE	1	
506	980-905	ROD HOLDER	1	
507	980-902	SIDE HANDLE HOLDER	1	
508	982-667	BAND	1	
509	980-903	SQUARE BOLT M8	1	
510	982-666	SIDE HANDLE ASS'Y	1	INCLUD.505 - 509

**OPTIONAL ACCESSORIES**

ITEM NO.	CODE NO.	DESCRIPTION	NO. USED	REMARKS
601	971-970	DRILL BIT (A) D5.0X119	1	
602	971-971	DRILL BIT (A) D5.0X159	1	
603	984-050	DRILL BIT (A) D5.5X119	1	
604	971-960	DRILL BIT (A) D6.0X159	1	
605	971-972	DRILL BIT (A) D6.5X119	1	
606	971-973	DRILL BIT (A) D6.5X159	1	

\* : ALTERNATIVE PARTS

DA20 ✓  
DA25 ✓

Neues Anschluss - Diagramm für den Schalter ( 980-922 Z)

