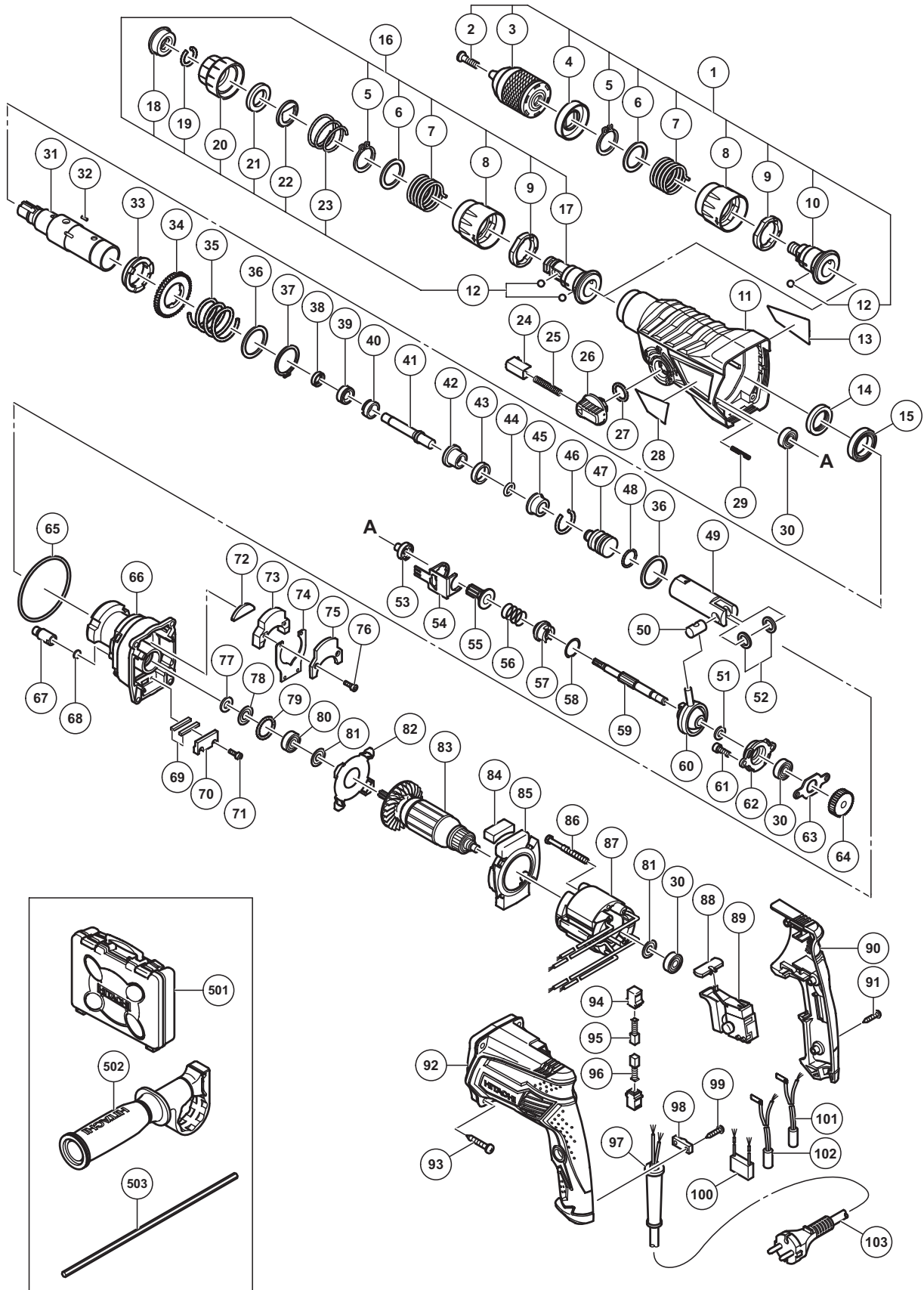


ELECTRIC TOOL PARTS LIST

■ ROTARY HAMMER Model DH 28PMY

2014·4·2
(E1)



PARTS

DH 28PMY

ITEM NO.	CODE NO.	DESCRIPTION	NO. USED	REMARKS
1	326271	CHUCK HOLDER ASS'Y	1	INCLUD.2-10,12
2	995344	FLAT HD. SCREW (A) (LEFT HAND) M6 X 25	1	
3	323898	DRILL CHUCK 13VLRL-N (W/O CHUCK WRENCH)	1	
4	326527	STOPPER	1	
5	965469	RETAINING RING FOR D25 SHAFT	2	
6	326520	WASHER (B)	2	
7	326519	SPRING	2	
8	326387	LOCK GRIP	2	
9	326801	LOCK RING	2	
10	336850	CHUCK HOLDER	1	
11	335274	GEAR COVER	1	
12	959156	STEEL BALL D7.0 (10 PCS.)	5	
13		NAME PLATE	1	
14	335259	OIL SEAL	1	
15	335260	BALL BEARING 6805DD	1	
16	326516	BIT HOLDER ASS'Y	1	INCLUD.5-9,12,17-23
17	336849	BIT HOLDER	1	
18	306345	FRONT CAP	1	
19	306340	STOPPER RING	1	
20	324527	GRIP	1	
21	324528	BALL HOLDER	1	
22	324526	HOLDER PLATE	1	
23	322812	HOLDER SPRING	1	
24	322789	PUSHING BUTTON	1	
25	317223	PUSHING SPRING	1	
26	334011	CHANGE LEVER	1	
27	878885	O-RING (S-18)	1	
28		HITACHI LABEL (UVP)	1	
29	335800	SPRING (E)	1	
30	608VVM	BALL BEARING 608VVC2PS2L	3	
31	336845	CYLINDER	1	
32	335264	PIN D2.5	4	
33	335263	CYLINDER CLUTCH	1	
34	335265	SECOND GEAR	1	
35	335266	SPRING (A)	1	
36	301679	WASHER (A)	2	
37	948310	RETAINING RING FOR D30 SHAFT	1	
38	335262	OIL SEAL (A)	1	
39	336847	HAMMER HOLDER (C)	1	
40	335795	SLEEVE (FW)	1	
41	336846	SECOND HAMMER	1	
42	335267	HAMMER HOLDER (A)	1	
43	322805	DAMPER (A)	1	
44	322808	O-RING (C)	1	
45	324524	DAMPER HOLDER	1	
46	322807	STOPPER RING	1	
47	335246	STRIKER	1	
48	335247	O-RING D17	1	
49	335255	PISTON	1	
50	335793	PISTON PIN	1	

PARTS

DH 28PMY

ITEM NO.	CODE NO.	DESCRIPTION	NO. USED	REMARKS
51	335250	BEARING WASHER	1	
52	335794	PISTON WASHER	2	
53	335275	PINION SLEEVE	1	
54	335276	LOCK PLATE	1	
55	335278	SECOND PINION	1	
56	323182	CLUTCH SPRING	1	
57	335254	CLUTCH	1	
58	331315	WASHER	1	
59	335277	SECOND SHAFT	1	
60	335249	RECIPROCATING BEARING	1	
61	990079	SEAL LOCK HEX. SOCKET HD. BOLT M5 X 16	2	
62	335270	BEARING HOLDER	1	
63	335271	BEARING COVER	1	
64	335253	FIRST GEAR	1	
65	335245	O-RING D72.2	1	
66	335798	INNER COVER	1	
67	334008	AIR CAP	1	
68	324543	FELT PACKING (A)	1	
69	335284	SPRING DAMPER	2	
70	335283	SPRING HOLDER	1	
71	983162	SEAL LOCK HEX. SOCKET HD. BOLT M4 X 12	2	
72	335285	WEIGHT DAMPER (A)	1	
73	335280	WEIGHT (A)	1	
74	335282	LEAF SPRING	1	
75	335281	WEIGHT (B)	1	
76	325241	SEAL LOCK HEX. SOCKET HD. BOLT M3 X 8	2	
77	322816	FELT PACKING	1	
78	322818	PACKING WASHER	1	
79	876796	O-RING (P-22)	1	
80	608DDM	BALL BEARING 608DDC2PS2L	1	
81	982631	WASHER (A)	2	
82	335279	COVER PLATE	1	
* 83	360961U	ARMATURE ASS'Y 110V-127V	1	INCLUD.30,80,81
* 83	360961E	ARMATURE 220V-230V	1	
84	335286	WEIGHT DAMPER (B)	1	
85	335244	FAN GUIDE	1	
86	961672	HEX. HD. TAPPING SCREW D4 X 50	2	
* 87	340850C	STATOR 110V-127V	1	
* 87	340850E	STATOR 220V-230V	1	
88	322853	PUSHING BUTTON	1	
* 89	335796	SWITCH	1	
* 89	335256	SWITCH (1P PILLAR TYPE)	1	FOR GBR (110V)
90	335242	HANDLE COVER	1	
91	301653	TAPPING SCREW (W/FLANGE) D4 X 20 (BLACK)	3	
92	335241	HOUSING	1	
93	301654	TAPPING SCREW (W/FLANGE) D5 X 35	4	
94	955203	BRUSH HOLDER	2	
95	999041	CARBON BRUSH (1 PAIR)	1	
96	999072	CARBON BRUSH (AUTO STOP TYPE) (1 PAIR)	1	
97	953327	CORD ARMOR D8.8	1	

PARTS

DH 28PMY

ITEM NO.	CODE NO.	DESCRIPTION	NO. USED	REMARKS
98	937631	CORD CLIP	1	
99	984750	TAPPING SCREW (W/FLANGE) D4 X 16	2	
100	930039	NOISE SUPPRESSOR	1	
101	335857	CHOKO COIL (A) BROWN	1	
102	324551	CHOKO COIL (A) BLUE	1	
* 103	500390Z	CORD	1	(CORD ARMOR D8.8)
* 103	500446Z	CORD	1	(CORD ARMOR D8.8) FOR GBR (230V)
* 103	500465Z	CORD	1	(CORD ARMOR D8.8) FOR GBR (110V)
* 103	500391Z	CORD	1	(CORD ARMOR D8.8) FOR SUI

STANDARD ACCESSORIES

ITEM NO.	CODE NO.	DESCRIPTION	NO. USED	REMARKS
501	336848	CASE	1	
502	335273	SIDE HANDLE	1	
503	303709	DEPTH GAUGE	1	

OPTIONAL ACCESSORIES

DH 28PMY

ITEM NO.	CODE NO.	DESCRIPTION	NO. USED	REMARKS
601	306885	DUST COLLECTOR (B) ASS'Y	1	INCLUD.602,610
602	986802	DUST COLLECTOR ASS'Y	1	INCLUD.603-609
603	986803	DUST COVER	1	
604	986804	SEAL COVER	1	
605	948310	RETAINING RING FOR D30 SHAFT	1	
606	958063	WASHER	1	
607	959150	STEEL BALL D6.35 (10 PCS.)	19	
608	986805	OUTER RACE	1	
609	986806	SOCKET	1	
610	306910	SOCKET ADAPTER (B)	1	
611	971787	DUST CUP	1	
612	931844	STOPPER	1	
613	321814	DRILL CHUCK 13VLRB-D	1	INCLUD.614
614	331966	FLAT HD. SCREW (LEFT HAND) M6 X 20	1	
615	321813	DRILL CHUCK 13VLD-D	1	
616	971511Z	+ DRIVER BIT (A) NO.2 25L	1	
617	971512Z	+ DRIVER BIT (A) NO.3 25L	1	
618	944477	COTTER	1	
619	982684	CENTER PIN (A) 109L FOR CORE BIT D32-38	1	
620	982685	CENTER PIN (B) 104L FOR CORE BIT D45-90	1	
621	982672	CORE BIT (A) 25MM	1	
622	982673	CORE BIT (A) 29MM	1	
623	982674	CORE BIT (A) 32MM	1	INCLUD.624
624	982686	GUIDE PLATE (FOR CORE BIT 32MM)	1	
625	982675	CORE BIT (A) 35MM	1	INCLUD.626
626	982687	GUIDE PLATE (FOR CORE BIT 35MM)	1	
627	982676	CORE BIT (A) 38MM	1	INCLUD.628
628	982688	GUIDE PLATE (FOR CORE BIT 38MM)	1	
629	982677	CORE BIT (B) 45MM	1	INCLUD.630
630	982689	GUIDE PLATE (FOR CORE BIT 45MM)	1	
631	982678	CORE BIT (B) 50MM	1	INCLUD.632
632	982690	GUIDE PLATE (FOR CORE BIT 50MM)	1	
633	971794	ANCHOR SETTING ADAPTER A W1/4' (MANUAL)	1	
634	971795	ANCHOR SETTING ADAPTER A W5/16' (MANUAL)	1	
635	971796	ANCHOR SETTING ADAPTER A W3/8' (MANUAL)	1	
636	971797	ANCHOR SETTING ADAPTER A W1/2' (MANUAL)	1	
637	971798	ANCHOR SETTING ADAPTER A W5/8' (MANUAL)	1	
638	971799	ANCHOR SETTING ADAPTER B W1/4' (MANUAL)	1	
639	971800	ANCHOR SETTING ADAPTER B W5/16' (MANUAL)	1	
640	971801	ANCHOR SETTING ADAPTER B W3/8' (MANUAL)	1	
641	971802	ANCHOR SETTING ADAPTER B W1/2' (MANUAL)	1	
642	971803	ANCHOR SETTING ADAPTER B W5/8' (MANUAL)	1	
643	944460	TAPER SHANK DRILL BIT D11 X 100	1	
644	944461	TAPER SHANK DRILL BIT D12.3 X 110	1	
645	993038	TAPER SHANK DRILL BIT D12.7 X 110	1	
646	944462	TAPER SHANK DRILL BIT D14.3 X 110	1	
647	944500	TAPER SHANK DRILL BIT D14.5 X 110	1	
648	944463	TAPER SHANK DRILL BIT D17.5 X 120	1	
649	944464	TAPER SHANK DRILL BIT D21.5 X 140	1	
650	320859	SYRINGE (BLOW-OUT BULB TYPE)	1	

