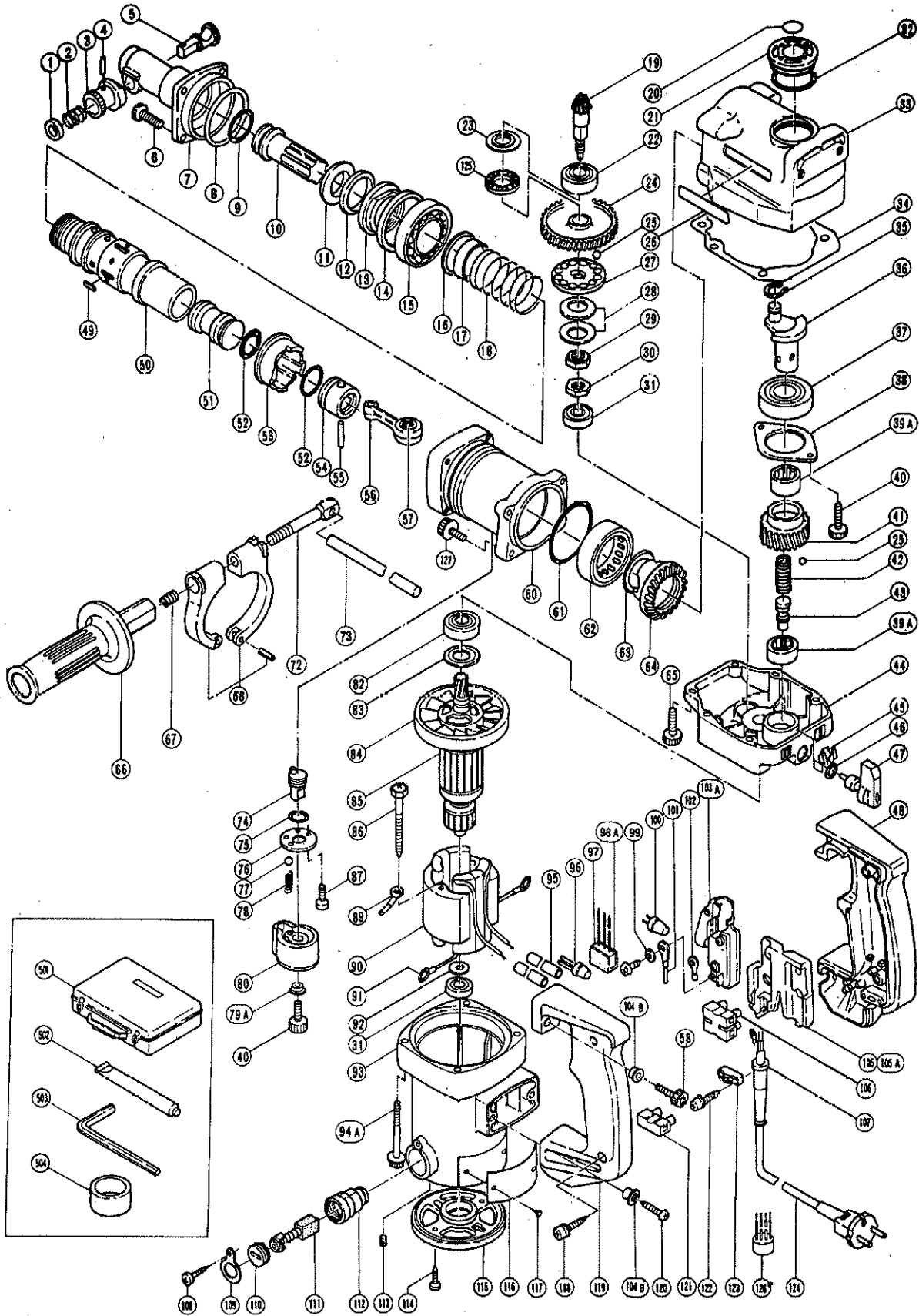


ELECTRIC TOOL PARTS LIST

■ HAMMER DRILL
Model DH 28Y

1991 · 6 · 26
(E4)



PARTS

DH 28Y

ITEM NO.	CODE NO.	DESCRIPTION	NO. USED	REMARKS
1	986-824	STOP WASHER	1	
2	986-823	STOPPER SPRING	1	
3	986-822	KNOB	1	
4	943-364	NEEDLE ROLLER D4X20	1	
5	986-821	STOP LEVER	1	
6	986-086	SEAL LOCK HEX. SOCKET HD. BOLT M6X20	4	
7	986-085	FRONT COVER	1	
8	980-744	O - RING (S - 55)	1	
9	981-857	O - RING (C)	1	
10	986-082	SECOND HAMMER	1	
11	981-862	DAMPER WASHER	1	
12	986-084	DAMPER	1	
13	986-098	CYLINDER CAP	1	
14	982-661	URETHANE RING	1	
15	690-7BB	BALL BEARING 6907	1	
16	981-973	CYLINDER WASHER	1	
17	981-858	VALVE BAND	1	
18	986-083	SPRING (A)	1	
19	986-079	THIRD PINION	1	
20		CAUTION PLATE	1	TILL 9.1986
21	982-646	OIL CAP <i>990945 einr sch. 32</i>	1	
22	600-2VV	BALL BEARING 6002VVCMP2S	1	
23	986-108	THRUST WASHER	1	
24	986-078	SECOND GEAR	1	
25	959-150	STEEL BALL D6.35 (10 PCS.)	10	
26	957-561	HITACHI LABEL	1	
27	986-077	CLUTCH PLATE	1	
28	985-768	BELLEVILLE SPRING	2	
29	986-106	SPECIAL NUT (B)	1	
30	986-105	SPECIAL NUT (A)	1	
31	608-VVM	BALL BEARING 608VVMC2EPS2L	2	
32	980-717	O - RING (S - 38)	1	
33	986-093	CRANK CASE	1	
34	986-071	SEAL PACKING	1	
35	939-542	RETAINING RING FOR D12 SHAFT (10 PCS.)	1	
36	986-072	CRANK SHAFT	1	
37	620-4VV	BALL BEARING 6204VVCMP2S	1	
38	986-074	BEARING COVER	1	
39A	981-852	NEEDLE BEARING (A) HK2012	2	
40	949-665	HEX. SOCKET HD. BOLT M5X14 (10 PCS.)	3	
41	986-073	FIRST GEAR	1	
42	986-076	SPRING (B)	1	
43	986-075	CLUTCH SHAFT	1	
44	986-082	GEAR COVER	1	
45	986-089	SPRING (C)	1	
46	872-654	O - RING (1AP - 10)	1	
47	986-088	CHANGE LEVER	1	
48	981-866	HANDLE (A)	1	
49	982-696	FEATHER KEY 3X3X15	4	
50	986-080	CYLINDER	1	
51	986-081	STRIKER	1	

*: ALTERNATIVE PARTS

06 - 91

PARTS

DH 28Y

ITEM NO.	CODE NO.	DESCRIPTION	NO. USED	REMARKS	
52	986-104	O - RING	2		
53	981-956	CLUTCH	1		
54	981-885	PISTON	1		
55	980-708	PISTON PIN	1		
56	980-707	CONNECTING ROD	1	INCLUD.57	
57	980-756	NEEDLE BEARING (NSK AJ50 1203)	1		
58	949-652	HEX. SOCKET HD. BOLT M6X25 (10 PCS.)	2		
60	986-094	CYLINDER CASE	1		
61	956-996	O - RING (1AS - 80)	1		
62	993-069	NEEDLE BEARING (M455520)	1		
63	981-955	THRUST WASHER	1		
64	981-954	THIRD GEAR	1		
65	949-755	HEX. SOCKET HD. BOLT M6X16 (10 PCS.)	2		
66	981-870	SIDE HANDLE	1		
67	672-612	SPRING	1		
68	981-960	HANDLE HOLDER	1		
72	971-785	HANDLE BOLT	1		
73	971-786	STOPPER ROD	1		
74	981-964	LEVER SHAFT	1		
75	981-967	O - RING (A)	1		
76	981-965	SHAFT COVER	1		
77	959-155	STEEL BALL D3.97 (10 PCS.)	1		
78	981-966	SPRING (B)	1		
79A	991-711	DISTANCE PIECE (B)	1		
80	981-963	LEVER	1		
82	600-1CM	BALL BEARING 6001CM	1		
83	986-070	OIL SEAL	1		
84	980-740	FAN	1		
*	85	986-091C	ARMATURE 110V - 115V	1	INCLUD.84
	85	986-091D	ARMATURE 120V - 127V	1	INCLUD.84
	85	986-091E	ARMATURE 220V - 230V	1	INCLUD.84
*	85	986-091F	ARMATURE 240V	1	INCLUD.84
*	85	986-091G	ARMATURE 220V - 230V	1	INCLUD.84 FOR SAF,ITA,FRG,FRA,ESP,HOL, DEN,FIN,SWE,AUT,NOR,SUI
*	85	986-091H	ARMATURE 240V	1	INCLUD.84 FOR GBR
*	85	986-091J	ARMATURE 110V	1	INCLUD.84 FOR GBR
	86	953-174	HEX. HD. TAPPING SCREW D5X55	2	
	87	983-162	SEAL LOCK HEX. SOCKET HD. BOLT M4X12	2	
*	89	986-277	INTERNAL WIRE	1	
*	90	986-090C	STATOR ASS'Y 110V - 115V	1	INCLUD.91
*	90	986-090D	STATOR ASS'Y 120V - 127V	1	INCLUD.91
*	90	986-090E	STATOR ASS'Y 220V - 230V	1	INCLUD.91
*	90	986-090F	STATOR ASS'Y 240V	1	INCLUD.91
*	90	986-090G	STATOR ASS'Y 220V - 230V	1	INCLUD.91 FOR NZL,SAF,ITA,FRG,FRA,ESP, HOL,DEN,FIN,SWE,AUT,SUI
*	90	986-090K	STATOR ASS'Y 220V	1	INCLUD.91 FOR NOR
*	90	986-090H	STATOR ASS'Y 240V	1	INCLUD.91 FOR AUS
*	90	986-090J	STATOR ASS'Y 110V	1	INCLUD.91 FOR GBR
	91	930-703	BRUSH TERMINAL	2	
	92	980-698	DUST WASHER (A)	1	
	93	986-095	HOUSING ASS'Y	1	INCLUD. 112,113

PARTS

DH 28Y

ITEM NO.	CODE NO.	DESCRIPTION	NO. USED	REMARKS
94A	991-345	HEX. SOCKET HD. BOLT (W/FLANGE) M6X65	4	
95		VINYL TUBE (ID7XTO.5X120)	2	
* 96	959-140	CONNECTOR 50091 (10 PCS.)	1	
* 97	994-273	NOISE SUPPRESSOR	1	
* 98A	963-243	SUPPORT	1	FOR NZL,GBR,SAF,ESP,SWE,NOR
* 99	949-423	WASHER M4 (10 PCS.)	1	FOR GBR,ITA,FRG,FRA,ESP,HOL,DEN,FIN, SWE,AUT,NOR,SUI
* 100	959-141	CONNECTOR 50092 (10 PCS.)	2	FOR NZL,GBR,SAF,ITA,FRG,FRA,ESP,HOL, DEN,FIN,SWE,AUT,NOR,SUI
* 101	981-974Z	INTERNAL WIRE	1	FOR NZL,GBR,SAF,ITA,FRG,FRA,ESP,HOL, DEN,FIN,SWE,AUT,SUI
* 101	971-776	INTERNAL WIRE	1	FOR NZL,GBR,SAF,ESP,SWE,SUI
* 101	986-277	INTERNAL WIRE	1	FOR ITA,FRG,FRA,HOL,DEN,FIN,AUT,NOR
* 102	959-144	TERMINAL 50051 (10 PCS.)	1	
* 103A	982-891	SWITCH (A) (1P SCREW TYPE) W/O LOCK	1	
* 103A	981-533Z	SWITCH (2P PILLAR TYPE) W/O LOCK	1	FOR AUS
104B	990-940	DISTANCE PIECE (C)	4	
* 105	981-869	SUPPORT	1	TILL 3.1987
* 105	981-986Z	SUPPORT (A)	1	FOR AUS
* 105A	990-082	SUPPORT (E)	1	SINCE 4.1987
* 106	958-308Z	PILLAR TERMINAL (A)	1	FOR FIN
* 107	958-049Z	CORD ARMOR D8.2	1	
* 107	940-778	CORD ARMOR D10.7	1	
108	958-715	TAPPING SCREW D4X10	2	
109	981-959	CAP COVER	2	
110	981-781	BRUSH CAP	2	
111	981-612Z	CARBON BRUSH (AUTO STOP TYPE) (1 PAIR)	2	
112	981-586	BRUSH HOLDER	2	
113	938-477	HEX. SOCKET SET SCREW M5X8	2	
114	953-040	TAPPING SCREW D5X20	2	
115	302-323	TAIL COVER (B)	1	
116		NAME PLATE	1	
117	949-510	RIVET D2.5X4.8 (10 PCS.)	2	
118	956-636	TAPPING SCREW (W/WASHER) D4X25	2	
119	981-867	HANDLE (B)	1	
120	986-087	TAPPING SCREW D6X30	2	
* 121	938-307Z	PILLAR TERMINAL	1	FOR GBR,ITA,FRG,FRA,ESP,HOL,DEN,FIN, SWE,AUT,NOR,SUI,USA
122	984-750	TAPPING SCREW (W/FLANGE) D4X16	2	
* 123	960-266	CORD CLIP	1	
* 123	981-987Z	CORD CLIP	1	FOR SUI
* 124	500-239Z	CORD	1	(CORD ARMOR D10.7)
* 124	500-224Z	CORD	1	(CORD ARMOR D10.7)FOR SIN,KUW
* 124	500-232Z	CORD	1	(CORD ARMOR D8.2)FOR SAF
* 124	500-235Z	CORD	1	(CORD ARMOR D8.2)FOR INA,SUR,MLT
* 124	500-249Z	CORD	1	(CORD ARMOR D8.2)FOR USA,CAN
* 124	500-390Z	CORD	1	(CORD ARMOR D10.7)FOR ITA,FRG,FRA, ESP,HOL,DEN,FIN,SWE,AUT,NOR
* 124	500-391Z	CORD	1	(CORD ARMOR D10.7)FOR SUI
* 124	500-394Z	CORD	1	(CORD ARMOR D10.7)FOR SYR
* 124	500-406Z	CORD	1	(CORD ARMOR D8.2)FOR GBR

*: ALTERNATIVE PARTS

06 - 91

PARTS

DH 28Y

ITEM NO.	CODE NO.	DESCRIPTION	NO. USED	REMARKS
* 124	500-408Z	CORD	1	(CORD ARMOR D10.7)FOR AUS
* 124	500-412Z	CORD	1	(CORD ARMOR D8.2)FOR NGU,NZL
125	986-107	THRUST NEEDLE BEARING	1	
* 128	992-807	CHOKE COIL	1	FOR NZL
127	991-712	HEX. SOCKET HD. BOLT (W/FLANGE) M6X25	4	

STANDARD ACCESSORIES

ITEM NO.	CODE NO.	DESCRIPTION	NO. USED	REMARKS
501	986-096	STEEL CASE	1	
502	981-840	GREASE A (30G)	1	
503	944-459	HEX. BAR WRENCH 5MM	1	
504	985-785	DUST COVER	2	

OPTIONAL ACCESSORIES

DH 28Y

ITEM NO.	CODE NO.	DESCRIPTION	NO. USED	REMARKS
601	955-994	CORE BIT 25MM	1	
602	955-995	CORE BIT 29MM	1	
603	955-996	CORE BIT 32MM	1	INCLUD.604
604	955-997	GUIDE PLATE 32MM (FOR CORE BIT)	1	
605	955-998	CORE BIT 35MM	1	INCLUD.606
606	955-999	GUIDE PLATE 35MM (FOR CORE BIT)	1	
607	956-000	CORE BIT 38MM	1	INCLUD.608
608	956-001	GUIDE PLATE 38MM (FOR CORE BIT)	1	
609	955-154	CORE BIT 45MM	1	INCLUD.610
610	955-166	GUIDE PLATE 45MM (FOR CORE BIT)	1	
611	955-155	CORE BIT 54MM	1	INCLUD.612
612	955-167	GUIDE PLATE 54MM (FOR CORE BIT)	1	
613	956-002	CORE BIT 64MM	1	INCLUD.614
614	956-003	GUIDE PLATE 64MM (FOR CORE BIT)	1	
615	955-157	CORE BIT 79MM	1	INCLUD.616
616	955-168	GUIDE PLATE 79MM (FOR CORE BIT)	1	
617	956-004	CORE BIT 94MM	1	INCLUD.618
618	956-005	GUIDE PLATE 94MM (FOR CORE BIT)	1	
619	955-159	CORE BIT 105MM	1	INCLUD.620
620	955-169	GUIDE PLATE 105MM (FOR CORE BIT)	1	
621	955-163	CORE BIT SHANK (A) D38 - 120	1	
622	956-008	CORE BIT SHANK (B) D25 - 35	1	
623	955-165	CENTER PIN (A) D38 - 150 (FOR CORE BIT)	1	
624	956-009	CENTER PIN (B) D32 - 35 (FOR CORE BIT)	1	
625	944-575	SYRINGE	1	
626	944-460	TAPER SHANK DRILL D11X100	1	
627	944-461	TAPER SHANK DRILL D12.3X110	1	
628	944-462	TAPER SHANK DRILL D14.3X110	1	
629	944-500	TAPER SHANK DRILL D14.5X110	1	
630	944-463	TAPER SHANK DRILL D17.5X120	1	
631	944-464	TAPER SHANK DRILL D21.5X140	1	
632	944-477	COTTER	1	
633	981-924	CUTTER (W45X280L)	1	
634	981-922	BULL POINT 280MM (ROUND TYPE)	1	
635	981-923	BULL POINT 450MM (ROUND TYPE)	1	
636	981-925	COLD CHISEL 280MM	1	
637	981-926	COLD CHISEL 450MM	1	
638	980-927	GREASE FOR IMPACT DRILL (500G)	1	
639	944-574	DRIFT KEY	1	
640	985-720	DRILL BIT D16.0X400 (HEX. SHANK TYPE)	1	
641	985-721	DRILL BIT D16.0X280 (HEX. SHANK TYPE)	1	
642	985-722	DRILL BIT D16.0X505 (HEX. SHANK TYPE)	1	
643	985-723	DRILL BIT D19.0X400 (HEX. SHANK TYPE)	1	
644	985-724	DRILL BIT D19.0X280 (HEX. SHANK TYPE)	1	
645	985-725	DRILL BIT D19.0X505 (HEX. SHANK TYPE)	1	
646	985-726	DRILL BIT D22.0X400 (HEX. SHANK TYPE)	1	
647	985-727	DRILL BIT D22.0X280 (HEX. SHANK TYPE)	1	
648	985-728	DRILL BIT D22.0X505 (HEX. SHANK TYPE)	1	
649	985-729	DRILL BIT D25.0X400 (HEX. SHANK TYPE)	1	
650	985-730	DRILL BIT D25.0X280 (HEX. SHANK TYPE)	1	
651	985-731	DRILL BIT D25.0X505 (HEX. SHANK TYPE)	1	

*: ALTERNATIVE PARTS