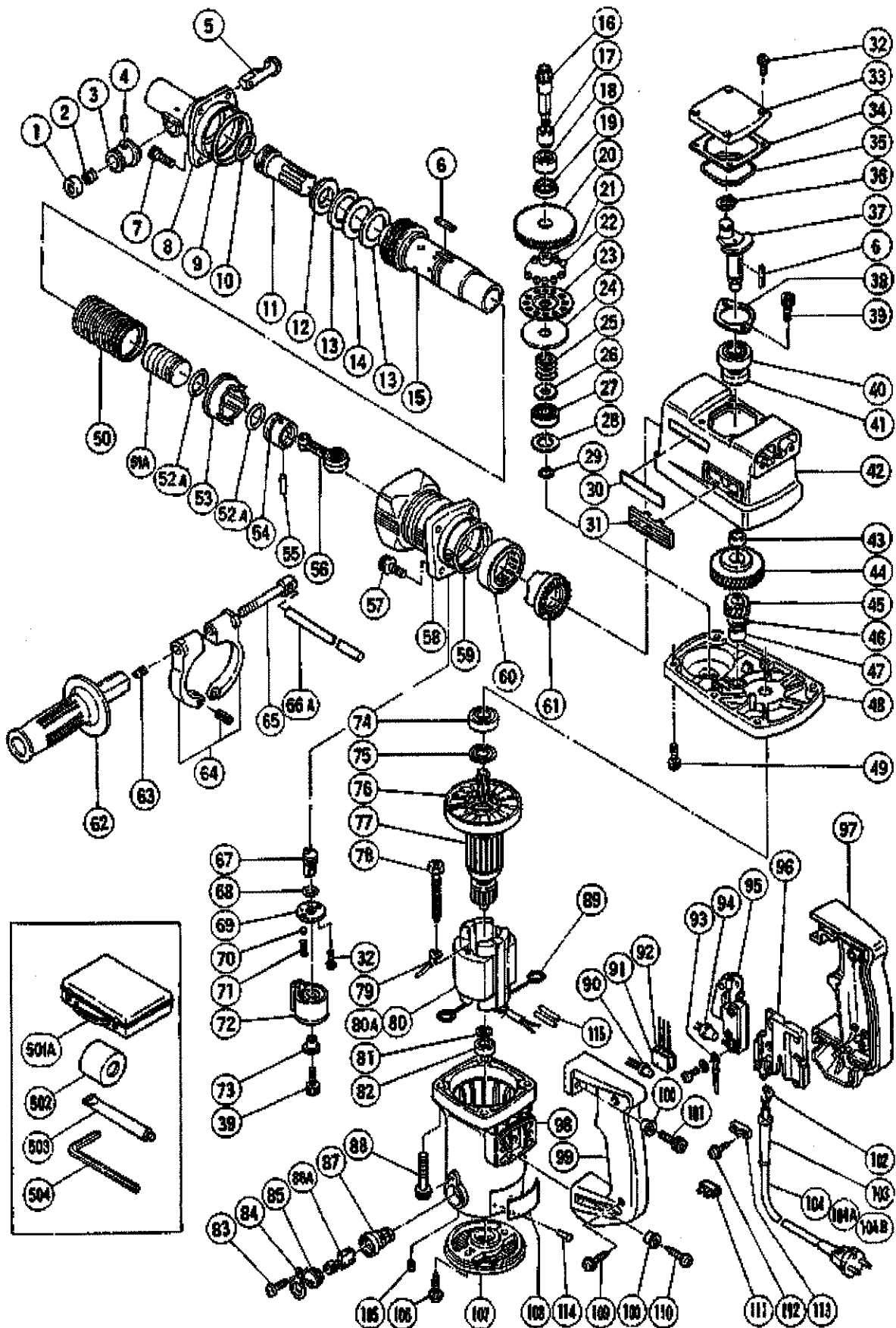


## ELECTRIC TOOL PARTS LIST

■ HAMMER DRILL  
Model DH 38YF

1998-6-15  
(E4)



## PARTS

DH38YF

ITEM No.	CODE No.	DESCRIPTION	No. USED	REMARKS
1	983-242	STOP WASHER	1	
2	981-937	STOPPER SPRING	1	
3	983-241	KNOB (A)	1	
4	943-364	NEEDLE ROLLER D4X20	1	
5	303-846	STOP LEVER	1	
6	971-750	FEATHER KEY 3X3X20	3	
7	991-696	SEAL LOCK BOLT M7X25	4	
8	303-340	FRONT COVER	1	
9	985-780	O-RING (E)	1	
10	986-882	O-RING	1	
11	303-339	SECOND HAMMER	1	
12	993-235	DAMPER WASHER	1	
13	993-234	DAMPER	2	
14	993-233	WASHER	1	
15	303-628	CYLINDER	1	
16	992-796	THIRD PINION	1	
17	981-850	SLEEVE	1	
18	981-852	NEEDLE BEARING (A) HK2012	1	
19	981-851	OIL SEAL (B)	1	
20	992-795	SECOND GEAR	1	
21	992-806	METAL	1	
22	959-150	STEEL BALL D6.35 (10 PCS.)	12	
23	992-792	HOLDER	1	
24	992-793	PLATE	1	
25	992-794	SPRING	1	
26	992-791	WASHER	1	
27	629-VVM	BALL BEARING 629VVC2PS2L	1	
28	944-525	BEARING WASHER (C)	1	
29	992-805	RETAINING RING FOR D9 SHAFT	1	
30	957-561	HITACHI LABEL	1	
31	991-713	WIND GUIDE (B)	2	
32	983-162	SEAL LOCK HEX. SOCKET HD. BOLT M4X12	6	
33	991-716	CRANK COVER	1	
34	980-749	SEAL PACKING	1	
35	980-744	O-RING (S-55)	1	
36	939-542	RETAINING RING FOR D12 SHAFT (10 PCS.)	1	
37	300-006	CRANK SHAFT	1	
38	981-847	BEARING COVER	1	

\*:ALTERNATIVE PARTS

-- 2--

## PARTS

DH38YF

ITEM No.	CODE No.	DESCRIPTION	No. USED	REMARKS
39	984-509	SEAL LOCK HEX. SOCKET HD. BOLT M5X14	3	
40	620-3DD	BALL BEARING 6203DDCMPS2L	1	
41	971-745	OIL SEAL (A)	1	
42	991-768	CRANK CASE ASS'Y	1	INCLUD.18,19,31
43	980-706	COLLAR	1	
44	300-007	FIRST GEAR	1	
45	300-008	SECOND PINION	1	
46	967-261	RETAINING RING FOR D17 SHAFT	1	
47	939-299	NEEDLE BEARING (M661)	1	
48	991-953	GEAR COVER	1	
49	992-803	SEAL LOCK HEX. SOCKET HD. BOLT M6X20	2	
50	981-957	SPRING (A)	1	
51A	313-122	STRIKER	1	
52A	310-420	O-RING	2	
53	981-956	CLUTCH	1	
54	981-885	PISTON	1	
55	980-708	PISTON PIN	1	
56	980-707	CONNECTING ROD ASS'Y	1	
57	991-712	HEX. SOCKET HD. BOLT (W/FLANGE) M6X25	4	
58	300-011	CYLINDER CASE	1	
59	956-996	O-RING (1AS-60)	1	
60	993-069	NEEDLE BEARING (B) (NTN HMK4520)	1	
61	981-954	THIRD GEAR	1	
62	981-870	SIDE HANDLE	1	
63	672-612	SPRING	1	
64	981-960	HANDLE HOLDER	1	
65	971-785	HANDLE BOLT	1	
66A	971-786	STOPPER ROD	1	
67	981-964	LEVER SHAFT	1	
68	981-967	O-RING (A)	1	
69	981-965	SHAFT COVER	1	
70	959-155	STEEL BALL D3.97 (10 PCS.)	1	
71	981-966	SPRING (B)	1	
72	981-963	LEVER	1	
73	991-711	DISTANCE PIECE (B)	1	
74	620-2VV	BALL BEARING 6202VVCMP2L	1	
75	980-700	DUST WASHER (B)	1	
76	980-740	FAN	1	

\*:ALTERNATIVE PARTS

-- 3--

## PARTS

DH38YF

ITEM No.	CODE No.	DESCRIPTION	No. USED	REMARKS
* 77	360-122C	(ARMATURE 110V-115V)	1	INCLUD.76
* 77	360-122E	ARMATURE ASS'Y 220V-230V	1	INCLUD.76
* 77	360-122F	ARMATURE ASS'Y 240V	1	INCLUD.76
* 77	360-122U	ARMATURE ASS'Y 110V-115V	1	INCLUD.74-76,81,82 FOR USA,CAN
78	980-251	HEX.HD.TAPPING SCREW D5X65	2	
79	986-277	INTERNAL WIRE	1	
* 80	981-970J	STATOR ASS'Y 110V	1	INCLUD.89
* 80	981-970K	STATOR ASS'Y 220V-230V	1	INCLUD.89
* 80	981-970F	STATOR ASS'Y 240V	1	INCLUD.89
* 80	981-970C	STATOR ASS'Y 110V-115V	1	INCLUD.89 FOR USA,CAN
* 80A	340-220F	STATOR ASS'Y 230V-240V	1	INCLUD.89 FOR FRG,FRA,NOR,HOL,ITA,SUI
81	980-698	DUST WASHER (A)	1	
82	608-VVM	BALL BEARING 608VVC2PS2L	1	
83	958-715	TAPPING SCREW D4X10	2	
84	981-959	CAP COVER	2	
85	961-781	BRUSH CAP	2	
86A	999-073	CARBON BRUSH (AUTO STOP TYPE) (1 PAIR)	2	
87	981-586	BRUSH HOLDER	2	
88	982-411	HEX. SOCKET HD. BOLT (W/FLANGE) M6X50	4	
89	930-703	BRUSH TERMINAL	2	
90	959-140	CONNECTOR 50091 (10 PCS.)	1	
91	963-243	SUPPORT	1	
92	994-273	NOISE SUPPRESSOR	1	
93	981-974	INTERNAL WIRE	1	
94	959-141	CONNECTOR 50092 (10 PCS.)	2	
* 95	990-941	SWITCH (B) (1P SCREW TYPE) W/O LOCK	1	
* 95	992-891	SWITCH (A) (1P SCREW TYPE) W/O LOCK	1	FOR USA,CAN
96	990-082	SUPPORT (E)	1	
* 97	992-808	HANDLE (A)	1	
* 97	981-866	HANDLE (A)	1	FOR USA,CAN
98	992-790	HOUSING ASS'Y	1	INCLUD.87,105
* 99	992-809	HANDLE (B)	1	
* 99	981-867	HANDLE (B)	1	FOR USA,CAN
100	990-940	DISTANCE PIECE (C)	4	
101	987-707	SEAL LOCK HEX. SOCKET HD. BOLT M6X25	2	
* 102	992-810	TERMINAL	1	
* 102	980-063	TERMINAL	1	FOR SAF
* 102	930-804	TERMINAL M4.0 (10 PCS.)	1	FOR USA,CAN

\*ALTERNATIVE PARTS

-- 4--

## PARTS

DH38YF

ITEM No.	CODE No.	DESCRIPTION	No. USED	REMARKS
* 103	958-049	CORD ARMOR D8.2	1	
* 103	940-778	CORD ARMOR D10.7	1	
* 104	500-390Z	CORD	1	(CORD ARMOR D10.7)
* 104	500-232Z	CORD	1	(CORD ARMOR D8.2) FOR SAF
* 104	500-406Z	CORD	1	(CORD ARMOR D8.2) FOR GBR
* 104	500-391Z	CORD	1	(CORD ARMOR D10.7) FOR SUI
* 104A	311-953	CORD	1	(CORD ARMOR D10.7) FOR CAN
* 104B	500-434Z	CORD	1	(CORD ARMOR D10.7) FOR USA
105	938-477	HEX. SOCKET SET SCREW M5X8	2	
106	985-480	TAPPING SCREW (W/WASHER) D5X20	2	
107	302-323	TAIL COVER (B)	1	
108		NAME PLATE	1	
109	956-636	TAPPING SCREW (W/WASHER) D4X25	2	
110	992-802	TAPPING SCREW D6X25	2	
* 111	938-307	PILLAR TERMINAL	1	FOR USA,GBR,FRG,FRA,HOL,FIN,NOR,ITA,SUI,
111	938-307	PILLAR TERMINAL	0	CAN
112	984-750	TAPPING SCREW (W/FLANGE) D4X16	2	
113	960-266	CORD CLIP	1	
* 114	949-510	RIVET D2.5X4.8 (10 PCS.)	2	FOR USA,CAN
* 115		VINYL TUBE (D7XT0.5X80)	2	
115A			0	FOR USA,CAN

## STANDARD ACCESSORIES

ITEM No.	CODE No.	DESCRIPTION	No. USED	REMARKS
501B	317-657	CASE (PLASTIC)	1	
502	993-245	DUST COVER	1	
503	981-840	GREASE (A) FOR HAMMER.HAMMER DRILL (30G)	1	
504	944-459	HEX. BAR WRENCH 5MM	1	

\*:ALTERNATIVE PARTS