

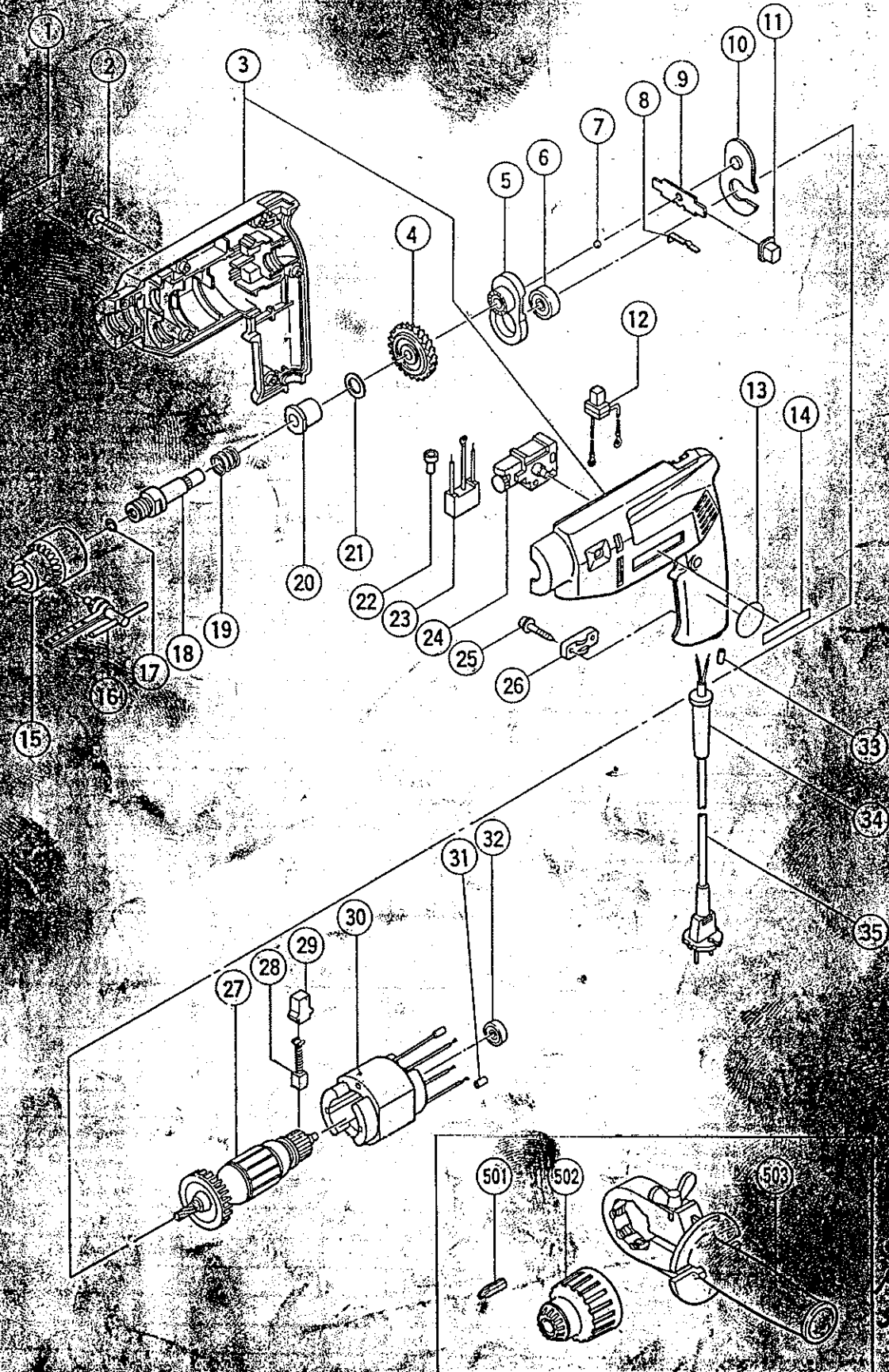
ELECTRIC TOOL PARTS LIST

IMPACT DRIVER DRILL

1986.5.20

Model FDV12Y

FDV12Y(E1)



PARTS

FDV12Y(E1)

Item No.	Code No.	Part Name	Q'ty	Remarks
1		Name Plate	1	
2	982095	Tapping Screw D4 x 20	7	W/Washer
3		Housing (A), (B) Set	1	See alternative parts
4	987073	Gear	1	
5	987074	Holder	1	
6	939291	Ball Bearing (608VVC2)	1	
7	959149	Steel Ball D4.76	1	(10 pcs.)
8	963226	Spring (A)	1	
9	963224	Change Plate	1	
10	987075	Plate	1	
11	963225	Change Knob	2	
12		Reversing Switch	1	See alternative parts
13	962994	Mark Plate	1	
14	950565	HITACHI Label	1	
15	950272	Drill Chuck 13VLA	1	includ. 16
16	930515	Chuck Wrench 10G	1	
17	9715092	Ring	1	
18	996690	Spindle Ass'y	1	includ. 17
19	987071	Spring	1	
20	987072	Metal	1	
21	981124	Washer	1	
22		Connector	1	See alternative parts
23		Noise Suppressor	1	See alternative parts
24		Switch	1	See alternative parts
25	984750	Tapping Screw D4 x 16	2	W/Flange
26	960266	Cord Clips	1	
27		Armature	1	See alternative parts
28	999041	Carbon Brush	2	(2 pcs.)
29	930483	Brush Holder	2	
30		Stator	1	See alternative parts
31		Tube (D)	1	See alternative parts
32	939239	Ball Bearing (626VVC2PS-2)	1	
33		Tube (D)	2	See alternative parts
34		Cord Armor	1	See alternative parts
35		Cord	1	See alternative parts

ALTERNATIVE PARTS

Item No.	Code No.	Part Name	Q'ty	Remarks
3	987142	Housing (A), (B) Set	1	Color: Brown
	987143	Housing (A), (B) Set	1	Color: Moss Green
12	987086	Reversing Switch	1	
	987570	Reversing Switch	1	for N.Z., S. Africa, Finland, Switzerland
	987571	Reversing Switch	1	for U.K., Italy, F.R. Germany, France, Holland, Denmark, Sweden, Norway, Austria
22	959140	Connector (50091)	1	(10 pcs.)

ALTERNATIVE PARTS

FDV12Y(E1)

Item No.	Code No.	Part Name	Q'ty	Remarks
23	987572	Noise Suppressor	1	for Denmark
	987097	Noise Suppressor	1	for N.Z., S. Africa, Europe
	987140	Noise Suppressor	1	for Switzerland
24	987094	Switch 110V ~ 127V	1	
	987095	Switch 220V ~ 240V	1	
27	987090C	Armature 110V ~ 127V	1	
	987090E	Armature 220V ~ 230V	1	
	987090F	Armature 240V	1	
30	987089C	Stator 110V ~ 127V	1	
	987089E	Stator 220V	1	
	987089F	Stator 230V ~ 240V	1	
31	981373	Tube (D)	1	
33	981373	Tube (D)	2	for Cord
34	930487	Cord Armor D8.2	1	
	930026	Cord Armor D10.2	1	
35	987091	Cord 110V ~ 120V	1	W/Cord Armor
	500212Z	Cord 127V ~ 240V	1	(Cord Armor D8.2)
	500245Z	Cord 110V ~ 220V	1	for Syria (Cord Armor D8.2)
	500409Z	Cord 110V ~ 220V	1	for Italy, F.R. Germany, France, Holland, Denmark, Finland, Austria, Indonesia, Surinam (Cord Armor D8.2)
	500395Z	Cord 220V	1	for Switzerland (Cord Armor D8.2)
	963245Z	Cord 220V	1	for Sweden, Norway (Cord Armor D8.2)
	500223Z	Cord 230V ~ 240V	1	for Singapore, Kuwait (Cord Armor D10.2)
	500226Z	Cord 230V ~ 240V	1	for N.Z., Papua New Guinea (Cord Armor D8.2)
	971517Z	Cord 230V ~ 240V	1	for U.K., S. Africa (Cord Armor D8.2)
	500405Z	Cord 240V	1	for Australia (Cord Armor D10.2)

