

# HITACHI

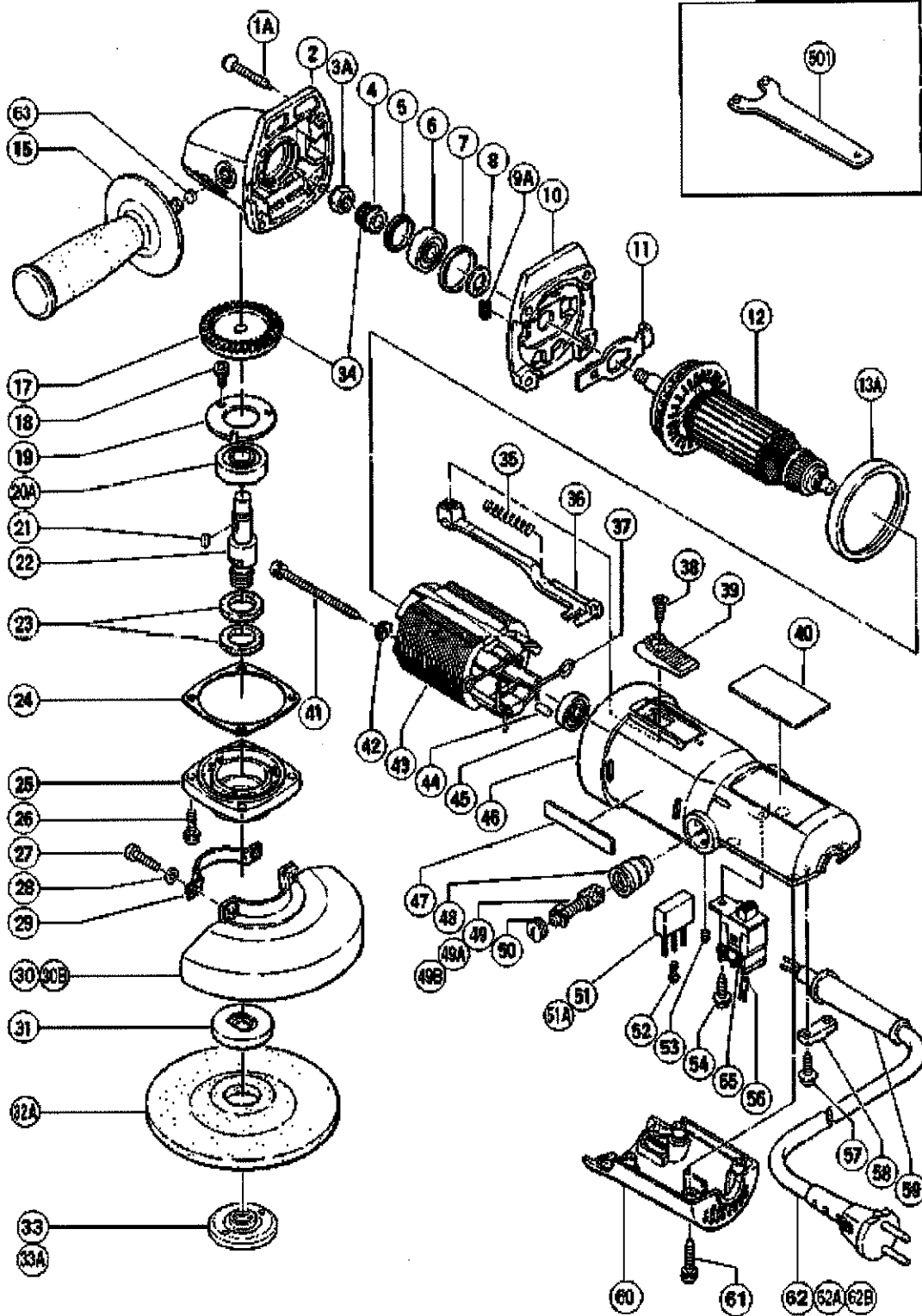
LIST NO. 0280

## ELECTRIC TOOL PARTS LIST

■ DISC GRINDER  
Model G 12SA

2001-8-1

(E4-1)



## PARTS

G12SA

ITEM No.	CODE No.	DESCRIPTION	No. USED	REMARKS
1A	957-580	TAPPING SCREW D5X30	4	
2	994-291	GEAR COVER ASSY	1	INCLD. 63
3A	994-311	SEAL LOCK U-NUT M8	1	
4	994-293	PINION	1	
5	994-308	SEAL RING (A)	1	
6	629-DDM	BALL BEARING 629DDPS2L	1	
7	957-754	RUBBER RING	1	
8	994-320	FELT	1	
9A	994-296	SPRING	1	
10	994-294	INNER COVER	1	
11	994-295	LOCK PLATE	1	
12	360-016U	ARMATURE ASS'Y 110V-127V	1	INCLUD.6,45
12	360-016E	ARMATURE 220V-230V	1	
12	360-016F	ARMATURE 240V	1	
13A	308-537	FAN GUIDE	1	
15	956-633	SIDE HANDLE	1	
17	994-300	GEAR	1	
18	987-201	SEAL LOCK SCREW (W/SP. WASHER) M4X10	3	
19	936-680	BEARING COVER (B)	1	
20A	620-1DD	BALL BEARING 6201DDCMPS2L	1	
21	944-109	FEATHER KEY 3X3X8	1	
* 22	994-301	SPINDLE (A)	1	
* 22	994-302	SPINDLE (B)	1	FOR USA,CAN
23	936-544	FELT PACKING D18	2	
24	938-305Z	SEAL PACKING	1	
25	938-293Z	PACKING GLAND	1	
26	993-985	SEAL LOCK SCREW (W/SP. WASHER) M5X16	4	
* 27	949-241	MACHINE SCREW M5X20 (10 PCS.)	1	
* 27	949-241	MACHINE SCREW M5X20 (10 PCS.)	2	FOR USA,CAN
* 28	949-454	SPRING WASHER M5 (10 PCS.)	1	
* 28	949-454	SPRING WASHER M5 (10 PCS.)	2	FOR USA,CAN
* 29	938-302Z	SET PLATE (A)	1	FOR USA,CAN
* 30	938-314	WHEEL GUARD ASS'Y	1	INCLUD.27-29 FOR USA,CAN
* 30C	319-656	WHEEL GUARD ASS'Y	1	INCLUD.27,28
* 31	937-817Z	WHEEL WASHER	1	
* 31	937-922P	WHEEL WASHER (B) FOR D5/8" HOLE	1	FOR USA,CAN
32A	316-821	D. C. WHEELS 115MM A36Q (25 PCS.)	1	
* 33	937-923P	WHEEL NUT 5/8"-11UNC	1	FOR USA,CAN

\*:ALTERNATIVE PARTS

--2--

## PARTS

G12SA

ITEM No.	CODE No.	DESCRIPTION	No. USED	REMARKS
* 33A	994-324	WHEEL NUT M14	1	
34	994-292	GEAR AND PINION ASSY	1	INCLUD.4,17
35	938-299	SPRING	1	
36	994-310	SLIDE BAR	1	
37	931-867	BRUSH TERMINAL	2	
38	949-322	FLAT HD. SCREW M4X10 (10 PCS.)	1	
39	994-298	SLIDE KNOB (C)	1	
40		NAME PLATE	1	
41	994-307	TAPPING SCREW (W/SP. WASHER) D4X75	2	
* 43	340-016D	STATOR ASS'Y 110V-127V	1	INCLUD.37
* 43	340-016E	STATOR ASS'Y 220V-230V (W/O TUBE D)	1	INCLUD.37
* 43	340-016J	STATOR ASS'Y 220V-230V (W/TUBE D)	1	INCLUD.37
* 43	340-016F	STATOR ASS'Y 240V	1	INCLUD.37
* 43	340-016G	STATOR ASS'Y 220V-230V	1	INCLUD.37 FOR SUI
44	931-701	BEARING LOCK	1	
45	608-VVM	BALL BEARING 608VVC2PS2L	1	
46	994-290	HOUSING ASS'Y	1	INCLUD.48,53
47	957-561	HITACHI LABEL	1	
48	957-571	BRUSH HOLDER	2	
* 49	999-021	CARBON BRUSH (1 PAIR)	2	
* 49B	999-070	CARBON BRUSH (AUTO STOP TYPE) (1 PAIR)	2	FOR DEN
50	931-266	BRUSH CAP	2	
* 51	994-273	NOISE SUPPRESSOR	1	
* 51A	311-935	NOISE SUPPRESSOR	1	FOR EUROPE (EXCEPT FOR SUI),NZL
* 52	980-063	TERMINAL	1	FOR NOISE SUPPRESSOR
* 52	959-144	TERMINAL 50051 (10 PCS.)	1	FOR NOISE SUPPRESSOR, FOR SUI
53	961-681	HEX. SOCKET SET SCREW M4X5	2	
54	982-034	TAPPING SCREW (W/WASHER) D4X12	1	
55	980-778	SLIDE SWITCH (2P PILLAR TYPE)	1	
* 56	981-373	TUBE (D)	2	FOR CORD
57	930-446	TAPPING SCREW (W/WASHER) D4X16	2	
58	960-266	CORD CLIP	1	
* 59	953-327	CORD ARMOR D8.8	1	
* 59	938-051	CORD ARMOR D10.1	1	
60	994-303	TAIL COVER	1	
61	956-636	TAPPING SCREW (W/WASHER) D4X25	4	
* 62	950-543Z	CORD	1	(CORD ARMOR D10.1)
* 62	500-240Z	CORD	1	(CORD ARMOR D8.8) FOR USA,CAN

\*:ALTERNATIVE PARTS

-- 3--

## PARTS

G12SA

ITEM No.	CODE No.	DESCRIPTION	No. USED	REMARKS
* 62	500-439Z	CORD	1	(CORD ARMOR D8.8) FOR AUS,NZL,NGU
* 62	950-547Z	CORD	1	(CORD ARMOR D8.8)
* 62	960-279Z	CORD	1	(CORD ARMOR D10.1) FOR SUI
* 62	980-339Z	CORD	1	(CORD ARMOR D10.1) FOR SWE,NOR
* 62A	500-423Z	CORD	1	(CORD ARMOR D8.8) FOR SIN,KUW
* 62A	500-447Z	CORD	1	(CORD ARMOR D8.8) FOR SYR
* 62B	500-234Z	CORD	1	(CORD ARMOR D8.8) FOR SAF,IND
63	937-033	FELT WASHER	1	

## STANDARD ACCESSORIES

ITEM No.	CODE No.	DESCRIPTION	No. USED	REMARKS
501	938-332Z	WRENCH	1	

\*ALTERNATIVE PARTS