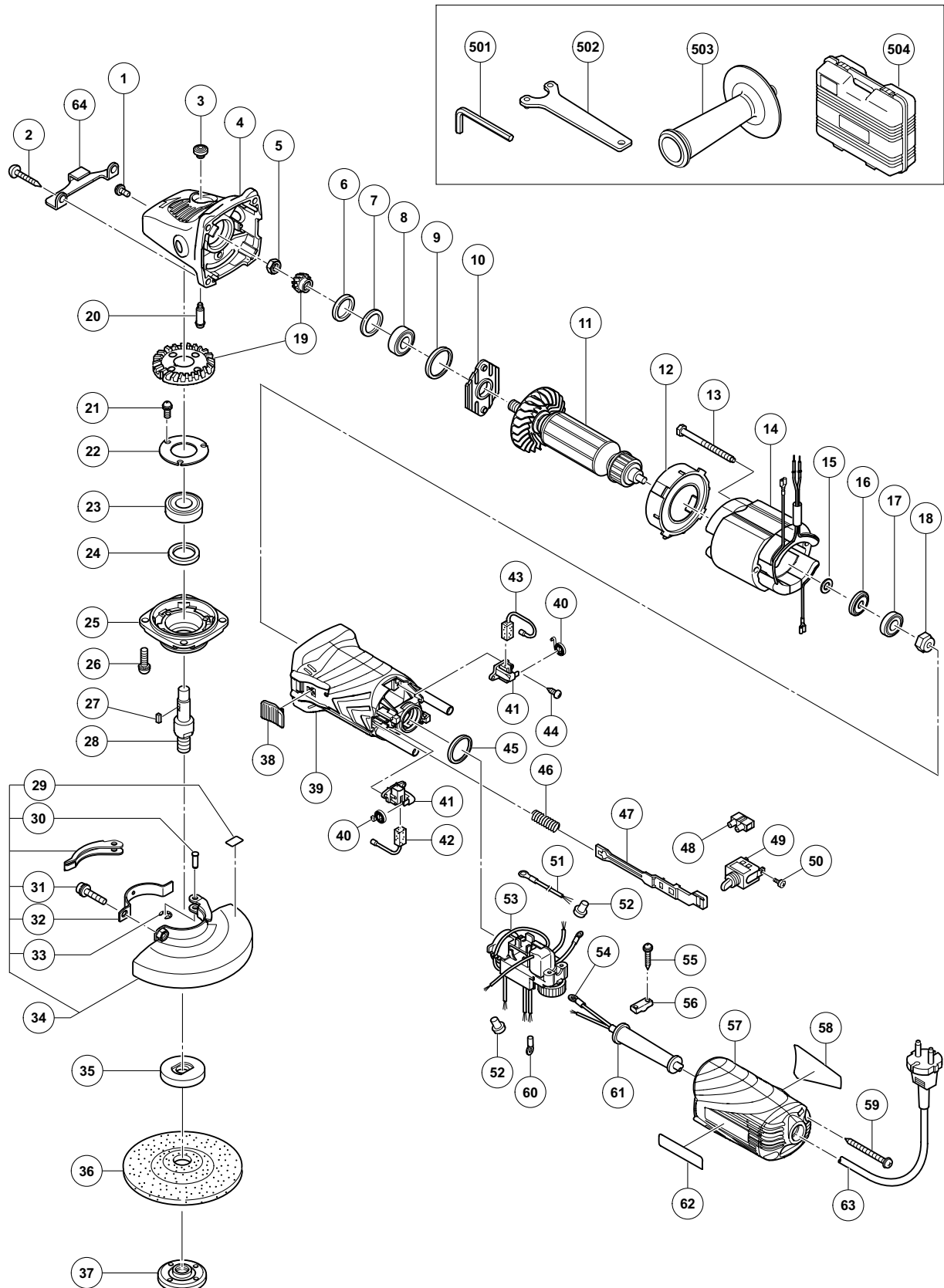


## ELECTRIC TOOL PARTS LIST

**DISC GRINDER**  
**Model G 13VA**

**2009·8·28**  
**(E1)**



## PARTS

G 13VA

ITEM NO.	CODE NO.	DESCRIPTION	NO. USED	REMARKS	
1	303-255	SEAL LOCK SCREW (W/SP. WASHER) M4 X 10	2		
2	320-523	TAPPING SCREW D5 X 25 (BLACK)	4		
3	301-944	PUSHING BUTTON	1		
4	321-737	GEAR COVER ASS'Y	1	INCLUD. 3, 20	
5	949-558	NUT M8 (10 PCS.)	1		
6	308-543	SEAL RING (A)	1		
7	980-866	WASHER (C)	1		
8	629-T12	BALL BEARING 629T12DDC3PS2-L	1		
9	957-754	RUBBER RING	1		
10	321-734	BEARING COVER	1		
*	11	360-869C	ARMATURE 110V	1	
*	11	360-869U	ARMATURE ASS'Y 120V	1	INCLUD. 8, 15-17
*	11	360-869E	ARMATURE 230V-240V	1	
12	321-732	FAN GUIDE	1		
13	982-021	HEX. HD. TAPPING SCREW D4 X 70	2		
*	14	340-749C	STATOR 110V	1	
*	14	340-749D	STATOR 120V-127V	1	
*	14	340-749E	STATOR ASS'Y 220V-240V	1	
15	311-737	THRUST WASHER	1		
16	311-435	DUST SEAL (A)	1		
17	608-VVM	BALL BEARING 608VVC2PS2L	1		
18	325-475	MAGNET	1		
19	329-054	GEAR AND PINION SET	1		
20	301-943	LOCK PIN	1		
21	991-207	SEAL LOCK SCREW (W/SP. WASHER) M4 X 8	3		
22	936-680	BEARING COVER (B)	1		
23	620-1DD	BALL BEARING 6201DDCMPS2L	1		
24	308-546	FELT PACKING	1		
25	308-545	PACKING GLAND	1		
26	307-046	SEAL LOCK SCREW (W/SP. WASHER) M5 X 16	4		
27	944-109	FEATHER KEY 3 X 3 X 8	1		
*	28	994-301	SPINDLE (A)	1	
*	28	994-302	SPINDLE (B)	1	FOR USA, CAN
29	311-492	LABEL	1		
30	311-744	SET PIN	1		
31	316-107	HEX. SOCKET HD. BOLT (W/WASHERS) M5 X 20	1		
32	311-491	SET PIECE (B)	1		
33	874-759	RETAINING RING (E-TYPE) FOR D2.5 SHAFT	1		
34	311-742	WHEEL GUARD ASS'Y	1	INCLUD. 29-33	
*	35	937-817Z	WHEEL WASHER	1	
*	35	937-928Z	WHEEL WASHER (A) FOR D16 HOLE	1	FOR USA, CAN
36	316-822	D. C. WHEELS 125MM A36Q (25 PCS.)	1		
*	37	994-324	WHEEL NUT M14	1	
*	37	937-923P	WHEEL NUT 5/8"-11UNC	1	FOR USA, CAN
38	330-810	SLIDE SWITCH KNOB	1		
39	330-808	HOUSING	1		
40	308-536	SPRING	2		
41	308-535	BRUSH HOLDER	2		
42	999-088	CARBON BRUSH (1 PAIR)	1		
43	999-076	CARBON BRUSH (AUTO STOP TYPE) (1 PAIR)	1		



