

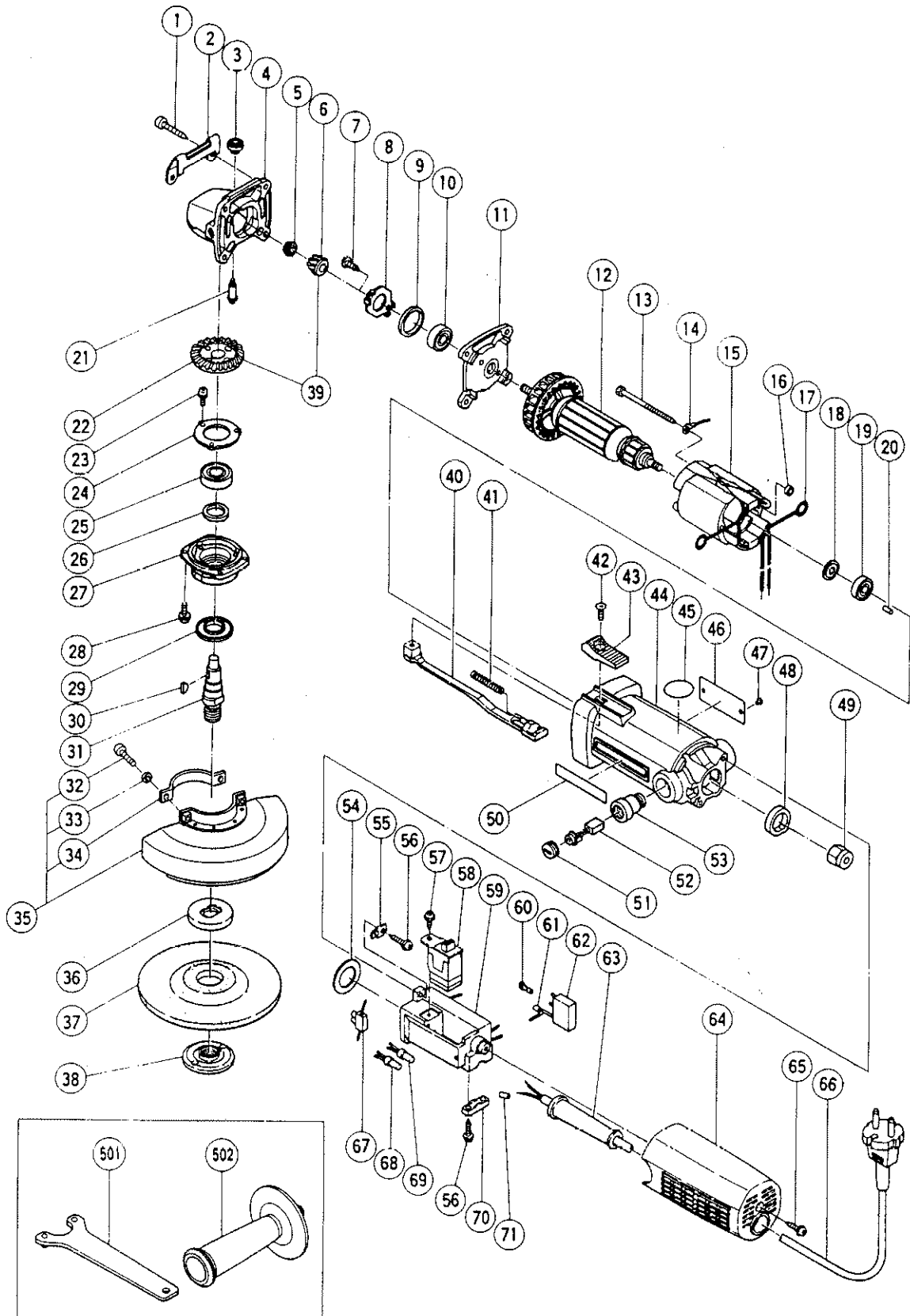
**ELECTRIC TOOL PARTS LIST**

■ 125mm DISC GRINDER

1989·5·20

Model G 13YB1

G 13YB1(EI)



## PARTS

G-13YB1

ITEM NO.	CODE NO.	DESCRIPTION	NO. USED	REMARKS
1	937-807	TAPPING SCREW D5X25	4	
2	302-149	GUARD PLATE	1	
3	301-944	PUSHING BUTTON	1	
4	302-097	GEAR COVER ASS'Y	1	INCLUD.3,21
5	938-071	FLANGE NUT M6	1	
6	301-854	PINION	1	
7	301-936	SLOTTED HD.SCREW (SEAL LOCK) M4X10	2	
8	301-937	BEARING COVER	1	
9	995-662	RUBBER RING	1	
10	608-VVM	BALL BEARING 608VVMC2EPS2L	1	
11	302-061	INNER COVER	1	
*	12	360-054E	1	
*	12	360-054G	1	FOR ITA,FRA,HOL,DEN,FIN,SWE,AUT,NOR
*	12	360-054H	1	FOR GBR
*	12	360-054J	1	FOR GBR
13	963-712	HEX. HD. TAPPING SCREW D4X65	2	
*	14	956-269	1	FOR SUI
*	14	958-971	1	FOR FIN
*	15	340-088C	1	INCLUD.17
*	15	340-088E	1	INCLUD.17
*	15	340-088F	1	INCLUD.17
16	995-660	WASHER (B)	2	
17	931-867	BRUSH TERMINAL	2	
18	980-865	WASHER (A)	1	
19	626-VVM	BALL BEARING 626VVMC2ERPS2S	1	
20	931-701	BEARING LOCK	1	
21	301-943	LOCK PIN	1	
22	301-855	GEAR	1	
23	987-201	SEAL LOCK SCREW (W/SP WASHER) M4X10	3	
24	938-058	BEARING COVER (B)	1	
25	600-1VV	BALL BEARING 6001VVMCPS2L	1	
26	301-946	FELT PACKING	1	
27	302-302	PACKING GLAND	1	
28	987-203	SEAL LOCK SCREW (W/SP WASHER) M4X12	4	
29	301-945	FRINGER	1	
30	940-220	WOODRUFF KEY 2.5X8	1	
31	302-059	SPINDLE	1	
32	949-241	MACHINE SCREW M5X20 (10 PCS.)	2	
33	949-454	SPRING WASHER M5 (10 PCS.)	2	
34	938-302Z	SET PLATE (A)	1	
*	35	994-321	1	INCLUD.32-34
*	35	938-330Z	1	INCLUD.32-34 FOR GBR,DEN
36	937-817Z	WHEEL WASHER	1	
37	938-300Z	D. C. WHEELS 125MM A36Q (10 PCS.)	1	
38	937-818Z	WHEEL NUT M14 <i>994 324 uh</i>	1	<i>W-0691</i>
39	301-853	GEAR ASS'Y	1	INCLUD.6,22
40	995-667	SLIDE BAR	1	
41	938-299	SPRING	1	
42	949-323	FLAT HD. SCREW M4X12 (10 PCS.)	1	
43	994-298	SLIDE KNOB (C)	1	<i>938 312</i>
44	982-020	HOUSING ASS'Y	1	INCLUD.53
45	986-914	MARK PLATE	1	

\* : ALTERNATIVE PARTS

05-89

PARTS

G 13YB1

ITEM NO.	CODE NO.	DESCRIPTION	NO. USED	REMARKS
46		NAME PLATE	1	
47	932-642	RIVET D2.5X2.8	2	
48	982-023	BEARING BUSH	1	
49	302-062	MAGNET	1	
50	957-561	HITACHI LABEL	1	
51	937-847	BRUSH CAP	2	
52	999-021	CARBON BRUSH (1 PAIR)	2	
53	937-846	BRUSH HOLDER	2	
54	995-673	DUST SEAL	1	
55	995-668	PLATE	1	
56	984-750	TAPPING SCREW (W/FLANGE) D4X16	4	
57	982-034	TAPPING SCREW (W/WASHER) D4X12	1	
58	980-778	SLIDE SWITCH (2P PILLAR TYPE)	1	
* 59	995-671	CONTROLLER ASSY 110V	1	INCLUD.54
* 59	995-672	CONTROLLER ASSY 220V	1	INCLUD.54
* 59	995-670	CONTROLLER ASSY 240V	1	INCLUD.54
60	959-144	TERMINAL 50051 (10 PCS.)	1	
61	981-373	TUBE (D)	1	
* 62	994-273	NOISE SUPPRESSOR	1	FOR GBR,ITA,FRG,FRA,HOL,FIN,SWE,AUT,NOR,DEN,SUI
63	953-327	CORD ARMOR D8.8	1	
64	995-669	TAIL COVER	1	
65	930-446	TAPPING SCREW (W/WASHER) D4X16	1	
* 66	500-409Z	CORD	1	FOR ITA,FRG,FRA,HOL,DEN,FIN,SWE,AUT,NOR
* 66	500-395Z	CORD	1	FOR SUI
* 66	500-231Z	CORD	1	FOR GBR
* 66	938-333Z	CORD	1	FOR GBR
* 67	982-805Z	PILLAR TERMINAL (B)	1	FOR FIN
* 68	959-140	CONNECTOR 50091 (10 PCS.)	3	FOR GBR,ITA,FRG,FRA,HOL,DEN,FIN,SWE,AUT,NOR,SUI
* 69	959-141	CONNECTOR 50092 (10 PCS.)	1	FOR GBR NOR,SUI
70	960-266	CORD CLIP	1	
* 71	981-373	TUBE (D)	2	FOR ITA,FRG,FRA,HOL,DEN,FIN,SWE,AUT,NOR,SUI

