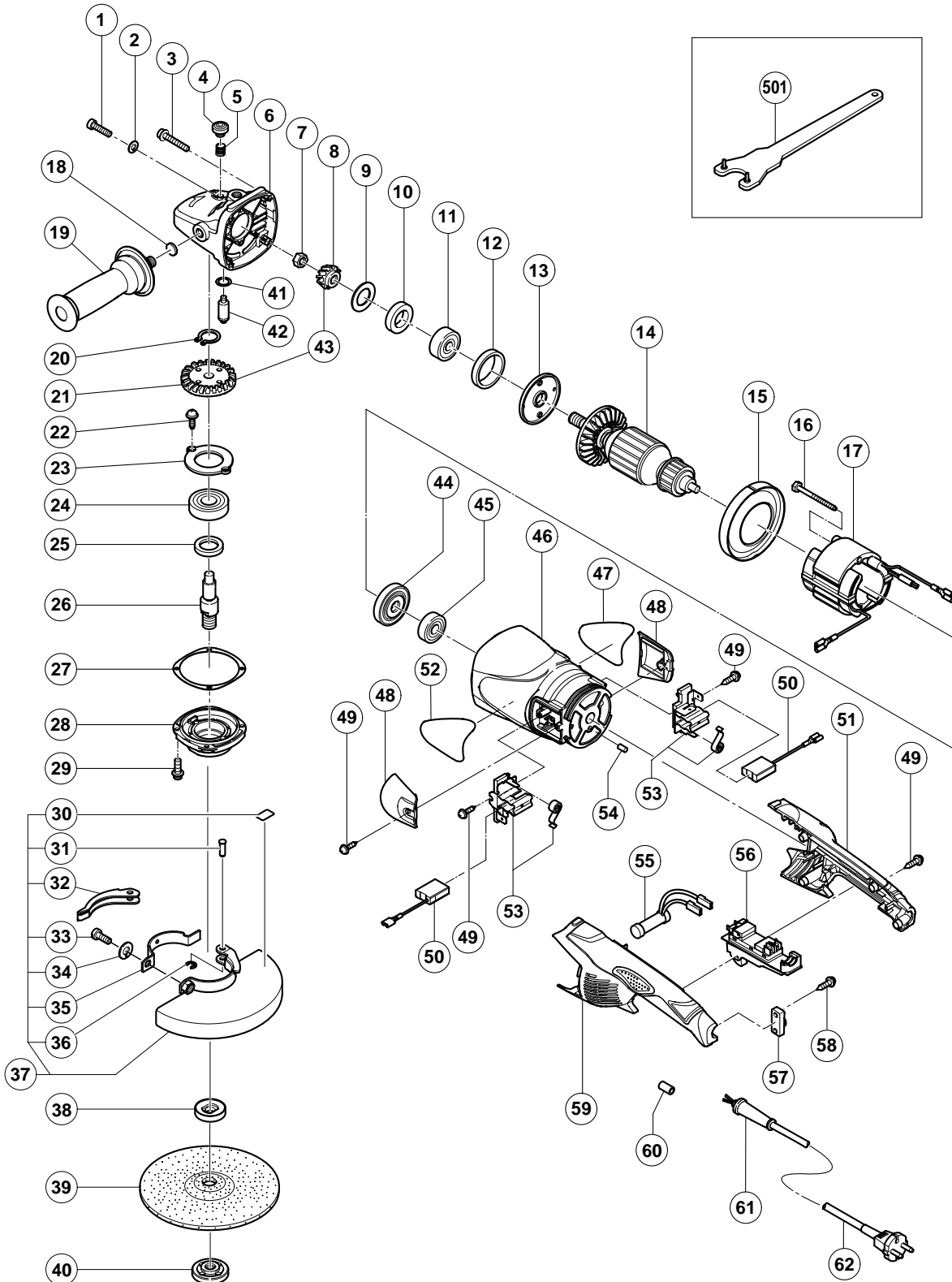


ELECTRIC TOOL PARTS LIST

DISC GRINDER Model G 18MRU

2004 • 2 • 20

(E1)



PARTS

G 18MRU

ITEM NO.	CODE NO.	DESCRIPTION	NO. USED	REMARKS	
1	984-509	SEAL LOCK HEX. SOCKET HD. BOLT M5X14	2		
2	949-454	SPRING WASHER M5 (10 PCS.)	2		
3	313-585	HEX. SOCKET HD. BOLT (W/FLANGE) M5X30	4		
4	306-888	PUSHING BUTTON	1		
5	320-219	SPRING	1		
6	322-544	GEAR COVER ASS'Y	1	INCLUD. 4, 5, 18, 41, 42	
7	320-226	SPECIAL NUT M10	1		
8	320-243	PINION	1		
9	320-221	SEAL WASHER	1		
10	320-222	FELT PACKING	1		
11	630-1DD	BALL BEARING 6301DDCMPS2L	1		
12	994-208	RUBBER RING (B)	1		
13	320-220	BEARING COVER (A)	1		
14	360-594E	ARMATURE 220V-230V	1		
15	320-215	FAN GUIDE	1		
16	984-271	HEX. HD. TAPPING SCREW D5X75	2		
17	340-546E	STATOR 220V-230V	1		
18	937-033	FELT WASHER	1		
19	322-411	SIDE HANDLE	1		
20	939-542	RETAINING RING FOR D12 SHAFT (10 PCS.)	1		
21	320-242	GEAR	1		
22	949-236	MACHINE SCREW M5X10 (10 PCS.)	2		
23	320-229	BEARING COVER (B)	1		
24	630-2DD	BALL BEARING 6302DDCMPS2L	1		
25	990-852	FELT PACKING (B)	1		
26	320-234	SPINDLE	1		
27	320-228	SEAL PLATE	1		
28	320-227	PACKING GLAND	1		
29	994-192	HEX. SOCKET HD. BOLT (W/FLANGE) M5X16	4		
30	311-492	LABEL	1		
31	321-546	SET PIN	1		
32	321-545	LEVER	1		
33	306-887	BOLT M8X22	1		
34	949-457	SPRING WASHER M8 (10 PCS.)	1		
35	321-544	SET PIECE	1		
36	673-489	RETAINING RING (E-TYPE) FOR D5 SHAFT	1		
37	321-543	WHEEL GUARD ASS'Y	1	INCLUD. 30-36	
38	937-907Z	WHEEL WASHER (A)	1		
39	316-824	D. C. WHEELS 180MM A24R (25 PCS.)	1		
40	937-909Z	WHEEL NUT M14X2	1		
41	320-218	O-RING	1		
42	306-890	LOCK PIN	1		
43	320-241	GEAR ASS'Y	1	INCLUD. 8, 21	
44	320-216	DUST SEAL	1		
45	620-0VV	BALL BEARING 6200VVCMP2L	1		
46	322-543	HOUSING	1		
47		NAME PLATE	1		
48	322-547	BRUSH COVER	2		
49	305-812	TAPPING SCREW (W/FLANGE) D4X16 (BLACK)	8		
*	50	999-061	CARBON BRUSH 7X17X22.5 (1 PAIR)	1	
*	50	999-089	CARBON BRUSH (AUTO STOP TYPE) (1 PAIR)	1	

