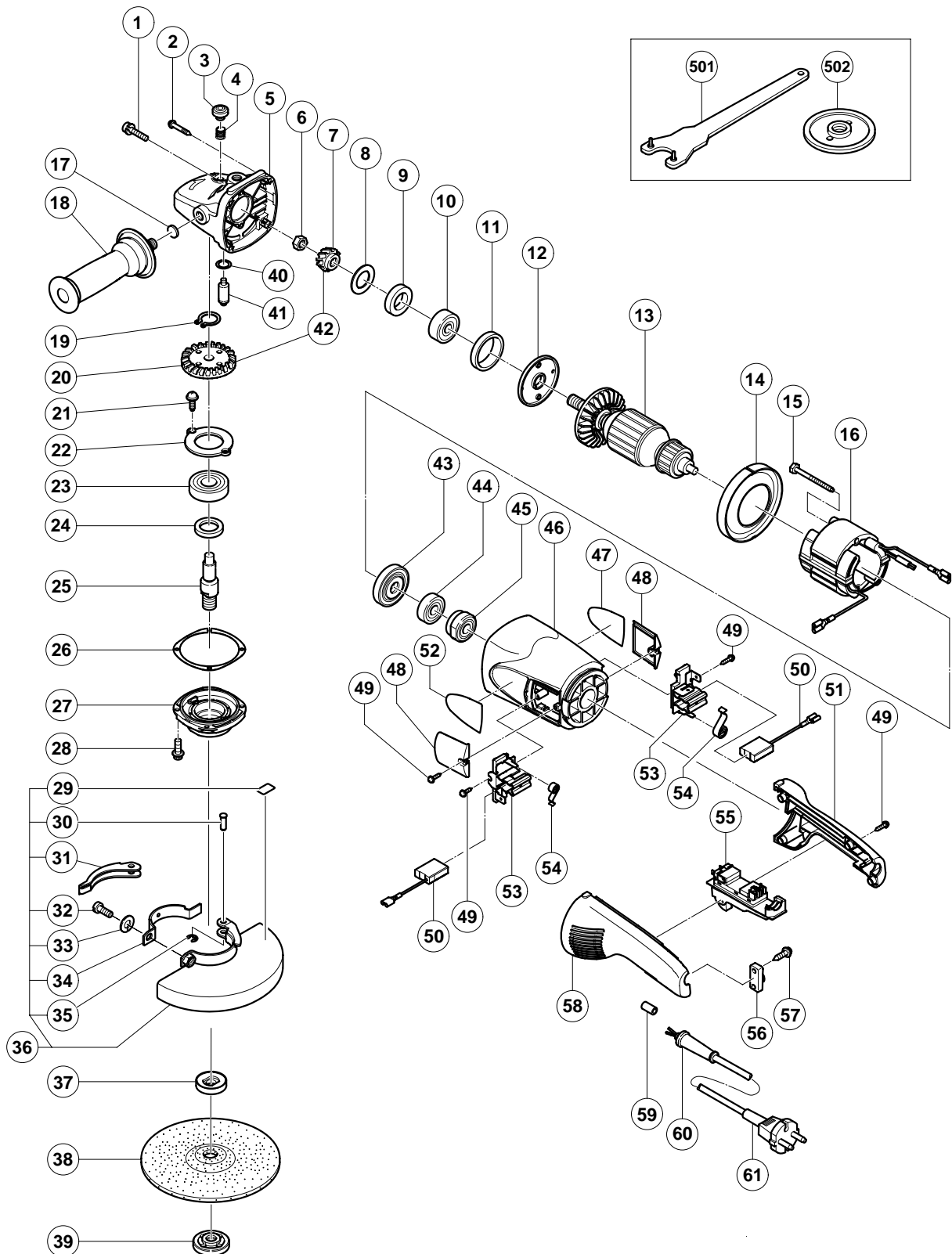


ELECTRIC TOOL PARTS LIST

■ DISC GRINDER
Model G 18SE3

2002・11・30
(E1)



PARTS

G 18SE3

ITEM NO.	CODE NO.	DESCRIPTION	NO. USED	REMARKS
1	315-636	SEAL LOCK SCREW (W/SP.WASHER) M5X14 (BLACK)	2	
2	301-654	TAPPING SCREW (W/FLANGE) D5X35	4	
3	306-888	PUSHING BUTTON	1	
4	320-219	SPRING	1	
5	320-217	GEAR COVER ASS'Y	1	INCLUD.3,4,17,40,41
6	320-226	SPECIAL NUT M10	1	
* 7	320-243	PINION	1	
* 7	320-225	PINION	1	FOR USA
8	320-221	SEAL WASHER	1	
9	320-222	FELT PACKING	1	
10	630-1DD	BALL BEARING 6301DDCMPS2L	1	
11	994-208	RUBBER RING (B)	1	
12	320-220	BEARING COVER (A)	1	
* 13	360-594U	ARMATURE ASS'Y 110V-120V	1	INCLUD.9,10,43,44
* 13	360-594E	ARMATURE 220V-230V	1	
* 13	360-594F	ARMATURE 240V	1	
14	320-215	FAN GUIDE	1	
15	984-271	HEX. HD. TAPPING SCREW D5X75	2	
* 16	340-546C	STATOR 110V-120V	1	
* 16	340-546E	STATOR 220V-230V	1	
* 16	340-546F	STATOR 240V	1	
17	937-033	FELT WASHER	1	
18	321-542	SIDE HANDLE	1	
19	939-542	RETAINING RING FOR D12 SHAFT (10 PCS.)	1	
* 20	320-242	GEAR	1	
* 20	320-224	GEAR	1	FOR USA
21	949-236	MACHINE SCREW M5X10 (10 PCS.)	2	
22	320-229	BEARING COVER (B)	1	
23	630-2DD	BALL BEARING 6302DDCMPS2L	1	
24	990-852	FELT PACKING (B)	1	
* 25	320-234	SPINDLE	1	
* 25	321-541	SPINDLE	1	FOR USA,CAN
26	320-228	SEAL PLATE	1	
27	320-227	PACKING GLAND	1	
28	994-192	HEX. SOCKET HD. BOLT (W/FLANGE) M5X16	4	
29	311-492	LABEL	1	
30	321-546	SET PIN	1	
31	321-545	LEVER	1	
32	306-887	BOLT M8X22	1	
33	949-457	SPRING WASHER M8 (10 PCS.)	1	
34	321-544	SET PIECE	1	
35	673-489	RETAINING RING (E-TYPE) FOR D5 SHAFT	1	
36	321-543	WHEEL GUARD ASS'Y	1	INCLUD.29-35
* 37	937-907Z	WHEEL WASHER (A)	1	
* 37	937-922P	WHEEL WASHER (B) FOR D5/8" HOLE	1	FOR USA,CAN
* 37	937-908Z	WHEEL WASHER (B)	1	FOR AUS
* 38	316-824	D. C. WHEELS 180MM A24R (25 PCS.)	1	EXCEPT FOR GBR, HOL, ESP, FRG, AUT, USA
* 39	937-909Z	WHEEL NUT M14X2	1	
* 39	937-923P	WHEEL NUT 5/8"-11UNC	1	FOR USA,CAN
40	320-218	O-RING	1	
41	306-890	LOCK PIN	1	

PARTS

ITEM NO.	CODE NO.	DESCRIPTION	NO. USED	REMARKS
*	42	320-241	GEAR ASS'Y	1 INCLUD. 7, 20
*	42	320-223	GEAR AND PINION ASS'Y	1 INCLUD. 7, 20 FOR USA
	43	320-216	DUST SEAL	1
	44	600-0VV	BALL BEARING 6000VVCMP2L	1
	45	321-536	BEARING BUSHING	1
	46	321-535	HOUSING ASS'Y	1 INCLUD. 45
	47		NAME PLATE	1
	48	320-232	BRUSH COVER	2
	49	305-812	TAPPING SCREW (W/FLANGE) D4X16 (BLACK)	8
*	50	999-061	CARBON BRUSH 7X17X22.5 (1 PAIR)	2
*	50	999-061	CARBON BRUSH 7X17X22.5 (1 PAIR)	1 FOR HOL, ESP, FRG, AUT
*	50	999-089	CARBON BRUSH (AUTO STOP TYPE) (1 PAIR)	1 FOR HOL, ESP, FRG, AUT
	51	320-231	HANDLE (B)	1
	52		HITACHI LABEL	1
	53	320-233	BRUSH HOLDER	2
	54	320-245	SPRING	2
*	55	320-239	SWITCH (2P PILLAR TYPE) W/SAFETY LOCK	1 W/LOCK
*	55	320-238	SWITCH (2P PILLAR TYPE) W/SAFETY LOCK	1 FOR AUS, GBR, HOL
*	55	321-540	SWITCH (2P PILLER TYPE) W/SAFETY LOCK	1 W/LOCK FOR USA, CAN
	56	960-266	CORD CLIP	1
	57	984-750	TAPPING SCREW (W/FLANGE) D4X16	2
	58	320-230	HANDLE (A)	1
*	59	981-373	TUBE (D)	2 FOR CORD
*	60	940-778	CORD ARMOR D10.7	1
*	60	958-049	CORD ARMOR D8.2	1
*	61	500-245Z	CORD	1 (CORD ARMOR D10.7)
*	61	500-423Z	CORD	1 (CORD ARMOR D8.2) FOR SIN, MAL, SRI, KUW, CYP, KEN, QAT, MLT, UAE
*	61	500-234Z	CORD	1 (CORD ARMOR D10.7) FOR INA, EGY, TUR, NGR, SAU, MAR, VIE
*	61	321-537	CORD	1 (CORD ARMOR D10.7) FOR HOL, ESP, FRG, AUT
*	61	321-538	CORD	1 (CORD ARMOR D10.7) FOR USA, CAN
*	61	321-539	CORD	1 (CORD ARMOR D10.7) FOR GBR (110V)
*	61	500-446Z	CORD	1 (CORD ARMOR D10.7) FOR GBR (230V)
*	61	500-408Z	CORD	1 (CORD ARMOR D8.2) FOR AUS
*	61	500-435Z	CORD	1 (CORD ARMOR D8.2) FOR HKG
*	61	500-438Z	CORD	1 (CORD ARMOR D10.7) FOR CHN
*	61	500-214Z	CORD	1 (CORD ARMOR D10.7) FOR TPE

