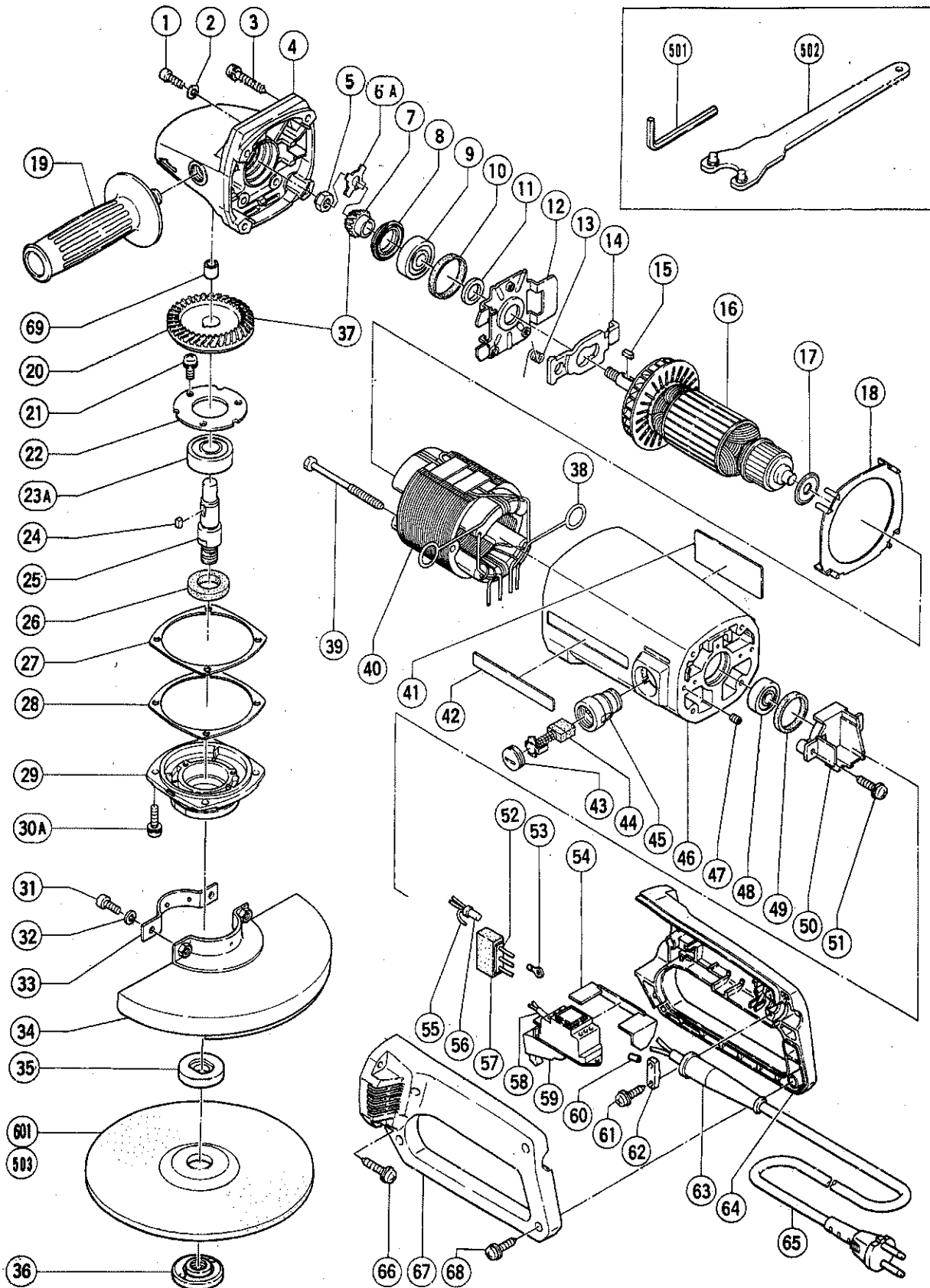


ELECTRIC TOOL PARTS LIST

DISC GRINDER
Model G 18SF

1992 · 8 · 31
 (E4)



PARTS

G 18SF

ITEM NO.	CODE NO.	DESCRIPTION	NO. USED	REMARKS	
1	991-690	SEAL LOCK HEX. SOCKET HD. BOLT M5X12	3		
2	949-454	SPRING WASHER M5 (10 PCS.)	3		
3	983-454	TAPPING SCREW (W/SP. WASHER) D5X40	4		
4	994-203	GEAR COVER ASS'Y	1	INCLUD.69	
5	946-228	U - NUT M8	1		
6A	937-988	PAWL WASHER	1		
7	937-932Z	PINION	1		
8	994-209	SEAL RING	1		
9	630-1DD	BALL BEARING 6301DDUCMPS2S	1		
10	994-208	RUBBER RING (B)	1		
11	990-864	FELT PACKING (A)	1		
12	994-204	BEARING COVER (B)	1		
13	994-148	SPRING	1		
14	994-205	LOCK PLATE	1		
15	940-533	FEATHER KEY 3X3X10	1		
*	16	360-024E	ARMATURE 220V	1	
*	16	360-024F	ARMATURE 230V - 240V	1	
17	955-260	DUST SEAL (A)	1		
18	994-200	FAN GUIDE	1		
19	937-981Z	SIDE HANDLE FOR M14	1		
20	994-207	GEAR	1		
21	992-038	SEAL LOCK SCREW (W/SP. WASHER) M5X10	3		
22	937-035	BEARING COVER (B)	1		
23A	630-2DD	BALL BEARING 6302DDUCMPS2S	1		
24	980-809	FEATHER KEY 4X4X8	1		
25	990-857	SPINDLE	1		
26	990-852	FELT PACKING (B)	1		
27	990-855	SEAL PACKING (B)	1		
28	990-856	THRUST WASHER (B)	1		
29	993-996	PACKING GLAND	1		
30A	994-192	HEX. SOCKET HD. BOLT (W/FLANGE) M5X16	4		
31	949-656	HEX. SOCKET HD. BOLT M8X20 (10 PCS.)	2		
32	949-457	SPRING WASHER M8 (10 PCS.)	2		
33	937-911	SET RING (A)	1		
34	937-934Z	WHEEL GUARD	1		
35	937-907Z	WHEEL WASHER (A)	1		
36	937-909Z	WHEEL NUT M14X2	1		
37	994-206	GEAR ASS'Y	1	INCLUD.7,20	
38	958-032	BRUSH TERMINAL	2		
39	961-993	HEX. TAPPING SCREW D5X80	2		
*	40	991-833L	STATOR ASS'Y 220V	1	INCLUD.38
*	40	991-833M	STATOR ASS'Y 230V - 240V	1	INCLUD.38
41		NAME PLATE	1		
42	938-098	HITACHI LABEL	1		
43	940-540	BRUSH CAP	2		
44	999-044	CARBON BRUSH (1 PAIR)	2		
45	980-487	BRUSH HOLDER	2		
46	994-213	HOUSING ASS'Y	1	INCLUD.45,47	
47	961-681	HEX. SOCKET SET SCREW M4X5	2		
48	620-0VV	BALL BEARING 6200VVCMP2S	1		
49	994-202	RUBBER RING (A)	1		

*: ALTERNATIVE PARTS

