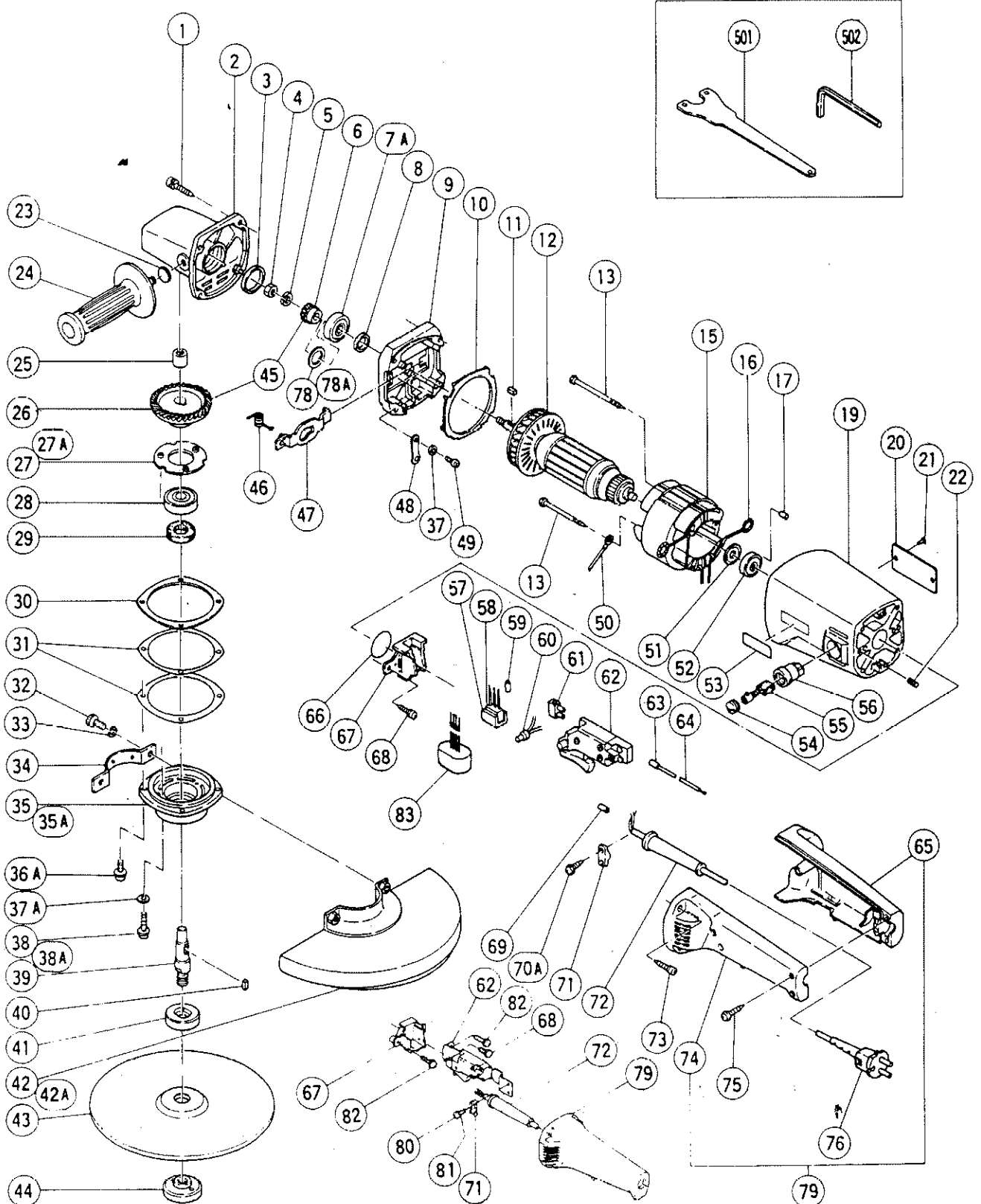


ELECTRIC TOOL PARTS LIST

■ DISC GRINDER
Model G23SA

1988·8·20
G23SA(E3)



PARTS

G23SA(E3)

Item No.	Code No.	Part Name	Q'ty	Remarks
1	983454	Tapping Screw D5 x 40	4	w/Spring Lock Washer
2	990845	Gear Cover Ass'y	1	includ. 23, 25
3	990846	Rubber Ring	1	
4	946228	U-Nut M8	1	(10 pcs.)
5	957042	Super Lock Washer	1	for M8 (10 pcs.)
6	990850	Pinion	1	
7A	6201DD	Ball Bearing 6201DDUCMAV2S	1	
8	990864	Felt Packing (A)	1	
9	990862	Inner Cover	1	
10	990851	Fan Guide	1	
11	940533	Key 3 x 3 x 10	1	
12	—	Armature Ass'y	1	See alternative parts
13	984271	Hexagon Hd. Tapping Screw D5 x 75	2	
15	—	Stator Ass'y	1	See alternative parts
16	937623	Brush Terminal	2	
17	931701	Bearing Lock	1	
19	990858	Housing Ass'y	1	includ. 22, 56
20	—	Name Plate	1	
21	949509	Rivet D2.5 x 3.2	2	(10 pcs.)
22	961681	Hexagon Socket Hd. Set Screw M4 x 5	2	
23	937033	Felt Washer	1	
24	9379812	Side Handle	1	
25	673002	Needle Bearing (HK1212)	1	
26	990849	Gear	1	
27	990853	Bearing Cover	1	till 12, 1985
27A	937035	Bearing Cover (B)	1	since 1, 1986
28	6302VV	Ball Bearing 6302VVCMP2S	1	
29	990852	Felt Packing (B)	1	
30	990855	Seal Packing (B)	1	
31	990856	Thrust Washer (B)	2	
32	—	Hexagon Socket Hd. Bolt M8 x 20	2	See alternative parts
33	—	Spring Lock Washer	2	See alternative parts
34	937911	Set Ring (A)	1	(except Netherlands, Finland)
35	990854	Packing Gland	1	till 12, 1985
35A	993996	Packing Gland	1	since 1, 1986
36A	994192	Hexagon Socket Hd. Bolt M5 x 16	4	w/Flange (10 pcs.)
37	949453	Spring Lock Washer	2	for M4 (10 pcs.)
37A	949453	Spring Lock Washer	3	for M4 till 12, 1985
38	949223	Machine Screw M4 x 25	3	till 12, 1985 (10 pcs.)
38A	992038	Machine Screw M5 x 10	3	(Seal Lock Screw) w/Spring Lock Washer since 1, 1986
39	—	Spindle	1	See alternative parts
40	980809	Feather Key 4 x 4 x 8	1	
41	—	Wheel Washer (A)	1	See alternative parts
42	—	Wheel Guard Ass'y	1	See alternative parts
43	937910Z	Resinoid Wheel 230 mm	1	
44	—	Wheel Nut	1	See alternative parts
45	990848	Gear Ass'y	1	includ. 6, 26
46	990843	Spring	1	
47	990842	Lock Plate	1	
48	990844	Plate Holder	1	
49	949214	Machine Screw M4 x 6	2	(10 pcs.)
50	—	Internal Wire	1	See alternative parts
51	944433	Dust Steel	1	

PARTS

G23SA(E3)

Item No.	Code No.	Part Name	Q'ty	Remarks
52	6000VV	Ball Bearing 6000VVCMP2S	1	
53	983865	HITACHI Label	1	
54	945161	Brush Cap	2	
55	961946Z	Carbon Brush	2	Auto Stop Type (2 pcs.)
56	938241	Brush Holder	2	
57	930153	Support (B)	1	
58	—	Noise Suppressor	1	See alternative parts
59	961820	Tube (D)	2	
60	—	Connector (50091)	1~3	See alternative parts
61	—	Pillar Terminal	1	See alternative parts
62	—	Double Pole Switch (Pillar Type)	1	See alternative parts
63	—	Tube (D)	2	See alternative parts
64	—	Internal Wire	2	See alternative parts
65	937986	Bar Handle (A)	1	till 6, 1988
66	990840	Dust Steel	1	
67	—	Bearing Cover	1	See alternative parts
68	—	Tapping Screw D4 x 12	1~3	See alternative parts
69	—	Tube (D)	2	See alternative parts
70A	984750	Tapping Screw D4 x 16	2	w/Flange
71	—	Cord Clip	1	See alternative parts
72	—	Cord Armor	1	See alternative parts
73	985605	Tapping Screw D5 x 25	4	w/Washer
74	937987	Bar Handle (B)	1	till 5, 1988
75	982095	Tapping Screw D4 x 20	3	w/Washer till 5, 1988
76	—	Cord	1	See alternative parts
78	990865	Washer	1	till 8, 1985
78A	994173	Seal Ring	1	since 9, 1985
79	—	Bar Handle Ass'y	1	See alternative parts
80	—	Machine Screw M4 x 14	2	See alternative parts
81	—	Spring Lock Washer	2	See alternative parts
82	—	Tapping Screw D4 x 25	2	See alternative parts
83	—	Choke Coil	1	See alternative parts

ALTERNATIVE PARTS

Item No.	Code No.	Part Name	Q'ty	Remarks
12	990860E	Armature 220V	1	
	990860G	Armature 220V	1	for France, Netherlands, Denmark, Finland, Sweden, Norway, Italy
	990860H	Armature 240V	1	for U.K.
	990860J	Armature 110V	1	for U.K.
	990860F	Armature 230V	1	for N.Z.
15	990859C	Stator Ass'y 110V	1	for U.K. includ. 16
	990859E	Stator Ass'y 220V	1	includ. 16
	990859G	Stator Ass'y 220V	1	for F.R. Germany, France, Netherlands, Denmark, Finland, Sweden, Norway, Italy includ. 16
	990859J	Stator Ass'y 240V	1	for U.K. includ. 16
	990859K	Stator Ass'y 220V	1	for Switzerland includ. 16
	990859F	Stator Ass'y 230V	1	for N.Z. includ. 16

ALTERNATIVE PARTS

G23SA(E3)

Item No.	Code No.	Part Name	Q'ty	Remarks
32	949656	Hexagon Socket Hd. Bolt M8 x 20	2	(10 pcs.)
	949656	Hexagon Socket Hd. Bolt M8 x 20	1	for Netherlands, Finland (10 pcs.)
33	949457	Spring Lock Washer	2	for M8 (10 pcs.)
	949457	Spring Lock Washer	1	for M8 for Netherlands, Finland (10 pcs.)
39	990857	Spindle	1	
	994216	Spindle	1	for Thailand
41	937907Z	Wheel Washer (A)	1	
	937928Z	Wheel Washer (A)	1	for Thailand
42	937912Z	Wheel Guard Ass'y	1	
42A	995980	Wheel Guard	1	for Netherlands, Finland
44	937909Z	Wheel Nut	1	
	937929Z	Wheel Nut	1	for Thailand
50	990861	Internal Wire	1	
	937633	Internal Wire	1	for Switzerland
58	971828Z	Noise Suppressor	1	
	960283Z	Noise Suppressor	1	for Switzerland
60	959140	Connector (50091)	1~3	(10 pcs.)
	959141	Connector (50092)	2	for Switzerland (10 pcs.)
61	938307Z	Pillar Terminal	1	for Finland
62	937985Z	Double Pole Switch (Pillar Type)		w/Lock
	981204	Double Pole Switch (Pillar Type)		for Switzerland since 10, 1985, Italy since 1, 1986, Thailand since 5, 1988, Asia since 6, 1988
63	981373	Tube (D)	2	for Switzerland
64	990866	Internal Wire	2	for Switzerland
67	937905	Bearing Cover	1	
	994201	Bearing Cover (C)	1	for Switzerland since 10, 1985, Thailand since 5, 1988, Asia since 6, 1988
68	982034	Tapping Screw D4 x 12	3	w/Washer
	982034	Tapping Screw D4 x 12	1	w/Washer For Switzerland since 10, 1985, Thailand since 5, 1988, Asia since 6, 1988
71	960266	Cord Clip	1	
	937904	Cord Clip	1	for Switzerland since 10, 1985, Italy since 1, 1986, Thailand since 5, 1988, Asia since 6, 1988
72	940778	Cord Armor D10.7	1	
	958049Z	Cord Armor D8.2	1	

ALTERNATIVE PARTS

G23SA(E3)

Item No.	Code No.	Part Name	Q'ty	Remarks
76	960279Z	Cord 220V	1	includ. 69 (Cord Armor D10.7)
	980339Z	Cord 220V	1	for Italy, F.R. Germany, France, Netherlands, Denmark, Finland, Sweden, Norway includ. 69 (Cord Armor D10.7)
	500237Z	Cord 240V	1	for U.K. (Cord Armor D8.2)
	500246Z	Cord 110V	1	for U.K. (Cord Armor D10.7)
	500234Z	Cord 220V	1	for Indonesia (Cord Armor D8.2)
	500248Z	Cord 220V	1	for Switzerland (Cord Armor D10.7)
	500411Z	Cord 230V	1	for N.Z. (Cord Armor D10.7)
79	937990	Bar Handle Ass'y	1	includ. 65, 74
	937903	Handle	1	for Switzerland since 10, 1985, Thailand since 5, 1988, Asia since 6, 1988
80	949218	Machine Screw M4 x 14	2	for Switzerland since 10, 1985, Thailand since 5, 1988, Asia since 6, 1988 (10 pcs.)
81	949453	Spring Lock Washer	2	for Switzerland since 10, 1985, Thailand since 5, 1988, Asia since 6, 1988 (10 pcs.)
82	956636	Tapping Screw D4 x 25	2	w/Washer for Switzerland since 10, 1985, Thailand since 5, 1988, Asia since 6, 1988
83	961422Z	Choke Coil	1	for N.Z.

STANDARD ACCESSORIES

Item No.	Code No.	Part Name	Q'ty	Remarks
501	937913Z	Wrench	1	
502	872422	Hexagon Bar Wrench 6 mm	1	

OPTIONAL ACCESSORIES

Item No.	Code No.	Part Name	Q'ty	Remarks
601	999038	Carbon Brush	2	(2 pcs.)
602	990863	Handle Joint	1	