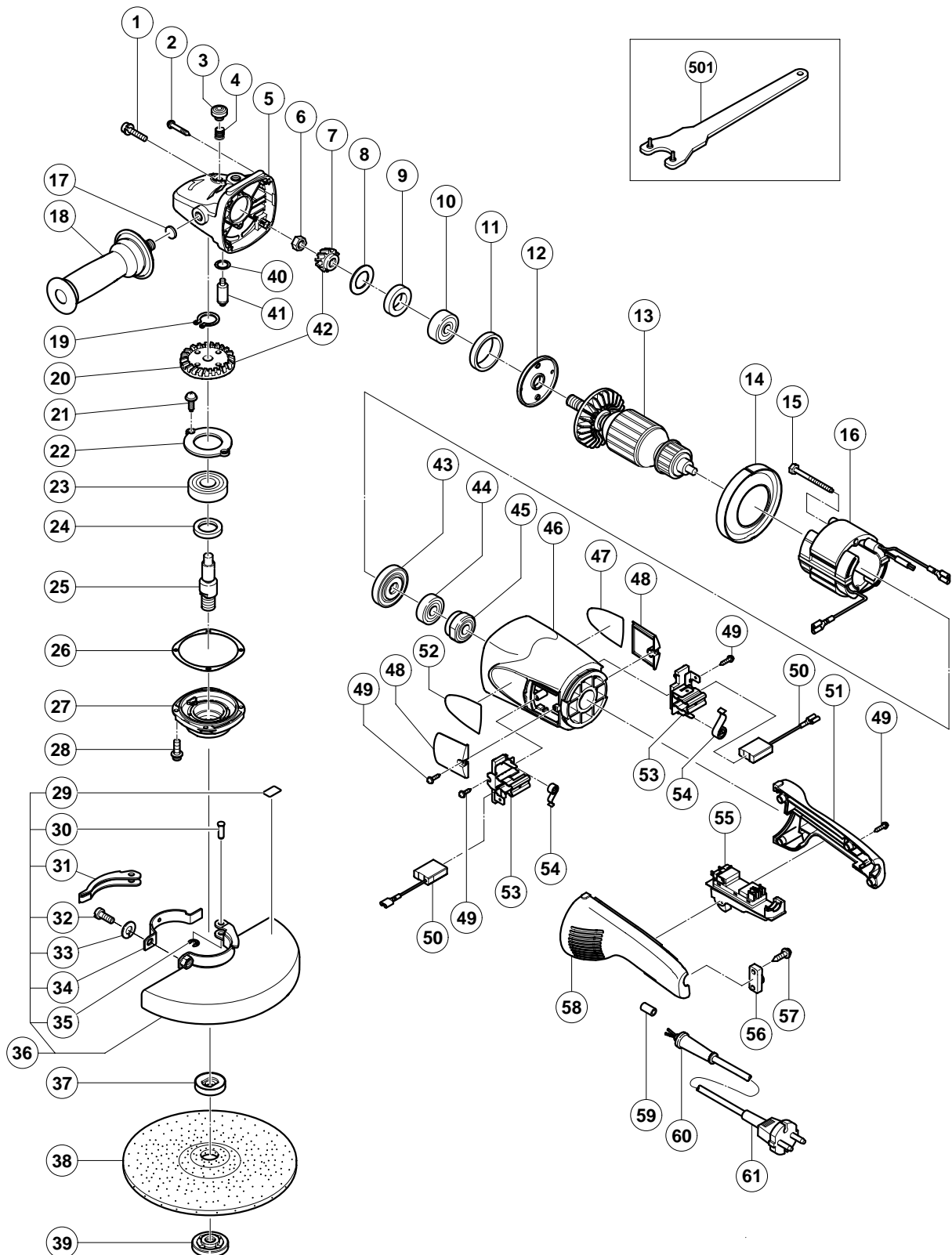


ELECTRIC TOOL PARTS LIST

■ DISC GRINDER
Model G 23SC3

2002・11・30
(E1)



PARTS

G 23SC3

| ITEM NO. | CODE NO. | DESCRIPTION | NO. USED | REMARKS |
|----------|----------|---|----------|-----------------------------|
| 1 | 315-636 | SEAL LOCK SCREW (W/SP.WASHER) M5X14 (BLACK) | 2 | |
| 2 | 301-654 | TAPPING SCREW (W/FLANGE) D5X35 | 4 | |
| 3 | 306-888 | PUSHING BUTTON | 1 | |
| 4 | 320-219 | SPRING | 1 | |
| 5 | 320-217 | GEAR COVER ASS'Y | 1 | INCLUD. 3, 4, 17, 40, 41 |
| 6 | 320-226 | SPECIAL NUT M10 | 1 | |
| 7 | 320-225 | PINION | 1 | |
| 8 | 320-221 | SEAL WASHER | 1 | |
| 9 | 320-222 | FELT PACKING | 1 | |
| 10 | 630-1DD | BALL BEARING 6301DDCMPS2L | 1 | |
| 11 | 994-208 | RUBBER RING (B) | 1 | |
| 12 | 320-220 | BEARING COVER (A) | 1 | |
| * 13 | 360-594U | ARMATURE ASS'Y 110V-120V | 1 | INCLUD. 9, 10, 43, 44 |
| * 13 | 360-594E | ARMATURE 220V-230V | 1 | |
| * 13 | 360-594F | ARMATURE 240V | 1 | |
| 14 | 320-215 | FAN GUIDE | 1 | |
| 15 | 984-271 | HEX. HD. TAPPING SCREW D5X75 | 2 | |
| * 16 | 340-546C | STATOR 110V-120V | 1 | |
| * 16 | 340-546E | STATOR 220V-230V | 1 | |
| * 16 | 340-546F | STATOR 240V | 1 | |
| 17 | 937-033 | FELT WASHER | 1 | |
| 18 | 321-542 | SIDE HANDLE | 1 | |
| 19 | 939-542 | RETAINING RING FOR D12 SHAFT (10 PCS.) | 1 | |
| 20 | 320-224 | GEAR | 1 | |
| 21 | 949-236 | MACHINE SCREW M5X10 (10 PCS.) | 2 | |
| 22 | 320-229 | BEARING COVER (B) | 1 | |
| 23 | 630-2DD | BALL BEARING 6302DDCMPS2L | 1 | |
| 24 | 990-852 | FELT PACKING (B) | 1 | |
| 25 | 320-234 | SPINDLE | 1 | |
| * 25 | 321-541 | SPINDLE | 1 | FOR USA, CAN |
| 26 | 320-228 | SEAL PLATE | 1 | |
| 27 | 320-227 | PACKING GLAND | 1 | |
| 28 | 994-192 | HEX. SOCKET HD. BOLT (W/FLANGE) M5X16 | 4 | |
| 29 | 311-492 | LABEL | 1 | |
| 30 | 321-546 | SET PIN | 1 | |
| 31 | 321-545 | LEVER | 1 | |
| 32 | 306-887 | BOLT M8X22 | 1 | |
| 33 | 949-457 | SPRING WASHER M8 (10 PCS.) | 1 | |
| 34 | 321-544 | SET PIECE | 1 | |
| 35 | 673-489 | RETAINING RING (E-TYPE) FOR D5 SHAFT | 1 | |
| 36 | 321-547 | WHEEL GUARD ASS'Y | 1 | INCLUD. 29-35 |
| * 37 | 937-907Z | WHEEL WASHER (A) | 1 | |
| * 37 | 937-922P | WHEEL WASHER (B) FOR D5/8" HOLE | 1 | FOR USA, CAN |
| * 38 | 316-825 | D. C. WHEELS 230MM A24R (25 PCS.) | 1 | EXCEPT FOR GBR, EUROPE, USA |
| * 39 | 937-909Z | WHEEL NUT M14X 2 | 1 | |
| * 39 | 937-923P | WHEEL NUT 5/8"-11UNC | 1 | FOR USA, CAN |
| 40 | 320-218 | O-RING | 1 | |
| 41 | 306-890 | LOCK PIN | 1 | |
| 42 | 320-223 | GEAR AND PINION ASS'Y | 1 | INCLUD. 7, 20 |
| 43 | 320-216 | DUST SEAL | 1 | |
| 44 | 600-0VV | BALL BEARING 6000VVCMP2L | 1 | |

