

Hitachi Power Tools

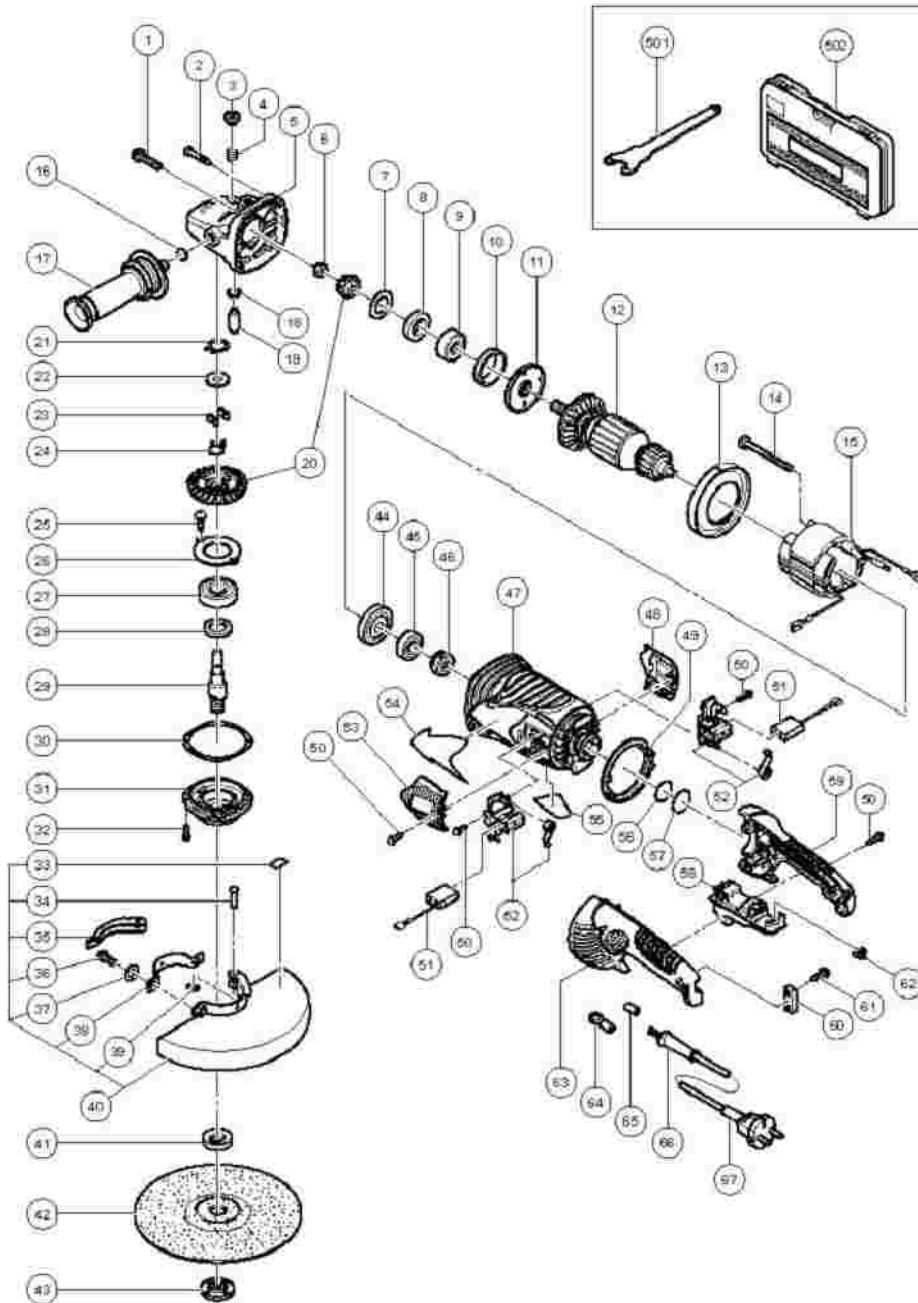
LIST NO. E279

ELECTRIC TOOL PARTS LIST

■ DISC GRINDER
Model G 23SCY

2006・9・28

(E1)



G23SCY

Pos. Nr.	Art. Nr.	Beschreibung	Stueck	Kommentar	
1	984-509	INBUSSCHRAUBE M5X14 SELBSTSICH.	2		SH H H M
2	323-209		4		T SC (V D (B
3	306-888	ARRETIERKNOPF CM12Y/G18U/G23U u.a	1		PU BI
4	320-219		1		SH
5	326-717		1	"INCLUD.3,4,16,18,19"	G A
6	320-226		1		SH M
7	320-221		1		SH
8	320-222		1		FE
9	630-1DD	KUGELLAGER 6301 DD	1		B. BI 63
10	994-208	GUMMIRING (B) G18SE/CM12Y u.a.	1		RI (B
11	320-220		1		BI C
12	360-594U		1	"INCLUD.8,9,44,45"	A A 12
12	360-777E		1		A 22
13	320-215		1		F/
14	984-271	SECHSKANTSCHNEIDSCHRAUBE D5X75	2		H T SC
15	340-682C		1		ST 12
15	340-682E		1		ST 24
16	937-033	FILZSCHEIBE G18SC/G23SA/u.a	1		FE
	322-				

17	411		1		SI
18	320-218		1		O
19	306-890	ARRETIERSTIFT CM12Y/G18U/G23U u.a	1		Lu
20	326-718		1		G PI
21	939-540	SICHERUNGSRING D10 (10ST)	1		RI RI SI PC
22	326-722		1		C C
23	326-721		4		C D
24	326-720		1		C
25	949-236	+KOPFSCHRAUBE M5X10 (10ST)	2		M SC (1
26	326-723		1		Bl C
27	630-2VV	KUGELLAGER 6302VV	1		B. Bl 63
28	990-852	FILZPACKUNG (B) G18U/G23U u.a.	1		FE (B
29	326-727		1		SI
29	326-728		1	"FOR USA,CAN"	SI
30	320-228		1		SI
31	320-227		1		P G
32	994-192	INBUSSCHRAUBE M5X16 M.FLANSCH	4		H H (V M
33	311-492	AUFKLEBER (SCHUTZHAUBE) G12SE u.a	1		L
34	321-546		1		SI
35	321-545		1		LI
36	306-887	-SCHRAUBE M8X22	1		B

37	949-457	FEDERSCHEIBE M8 (10ST)	1		SI W (1)
38	321-544		1		SI
39	673-489	SICHERUNGSRING (E-TYP) D5	1		RI RI FC
40	321-547		1	INCLUD.33-39	W G
40	324-267		1	"INCLUD.33-39 FOR USA,CAN"	W G
41	937-907Z	SPANNFLANSCH G15YC/G18SC2-UB	1		W W
41	310-337	TURBO-FLANSCH G13SC/G15SA	1	FOR BEL	SU W
41	937-922P		1	"FOR USA,CAN"	"V W FC H
42	316-825		1	"FOR VEN,SYR,SIN"	D 23 (2)
43	937-909Z	FLANSCHMUTTER G18SC2-G18UB/G23U-B	1		W M
43	937-923P		1	"FOR USA,CAN"	"V 5/
44	320-216		1		D
45	600-0VV	KUGELLAGER 6000 VV	1		B. BI 6C
46	321-536		1		BI BI
47	326-712		1	INCLUD.46	H A.
48	326-716		1		BI
49	326-726		1		H D.
50	305-812	SCHNEIDSCHRAUBE D4X16 MIT FLANSCH	8		T. SC (V D. (B
51	999-061		2		C. BI 72

					P/
51	999-061		1	"FOR FRA,HOL,ITA,FRG,ESP,BEL,AUT"	C. Bl 72 P/
51	999-089		1	"FOR FRA,HOL,ITA,FRG,ESP,BEL,AUT"	C. Bl S1 P/
52	322-323		2		Bl H
53	326-715		1		Bl
54			1		H L
55			1		N
56	326-724		1		O
57	326-725		1		O
58	320-238		1	OFF/LOCK	SV PI W L
58	320-239		1	W/LOCK	SV PI W L
58	322-614		1	"INCLUD.62 W/LOCK FOR USA,CAN"	SV PI W L
59	326-714		1		H
60	960-266	KABELKLEMME DIV.TYPEN	1		C
61	984-750	SCHNEIDSCHRAUBE D4X16 MIT FLANSCH	2		T S (V D
62	322-549		1	"FOR USA,CAN"	SV C
63	326-713		1		H
64	930-804	KABELSCHUH M4.0 (10ST)	2	"FOR USA,CAN"	T M
65	981-373	ADERENDHÜLSE (D) DIV.TYPEN	2	FOR CORD	T

66	940-778	KABELKNICKSCHUTZ D10.7 DIV.TYPEN	1		C D
66	958-049	KABELKNICKSCHUTZ D8.2 DIV.TYPEN	1		C D
67	321-537		1	(CORD ARMOR D10.7)	C
67	500-474Z		1	(CORD ARMOR D10.7) FOR VEN	C
67	500-245Z		1	(CORD ARMOR D10.7) FOR SYR	C
67	500-423Z		1	(CORD ARMOR D8.2) FOR SIN	C
67	321-538		1	"(CORD ARMOR D10.7) FOR USA,CAN"	C
67	321-539		1	(CORD ARMOR D10.7) FOR GBR (110V)	C
67	500-460Z		1	(CORD ARMOR D10.7) FOR GBR (230V)	C
501	325-491		1		W
502	326-175		1	"FOR FRA,BEL "	C
601	316-825		1		D 23 (2
602	310-337	TURBO-FLANSCH G13SC/G15SA	1		SU W
603	323-993		1	INCLUD.604	PI SI
604	985-597		2	FOR PIPE HANDLE	B
605	937-984Z		1	"FOR USA,CAN"	W G