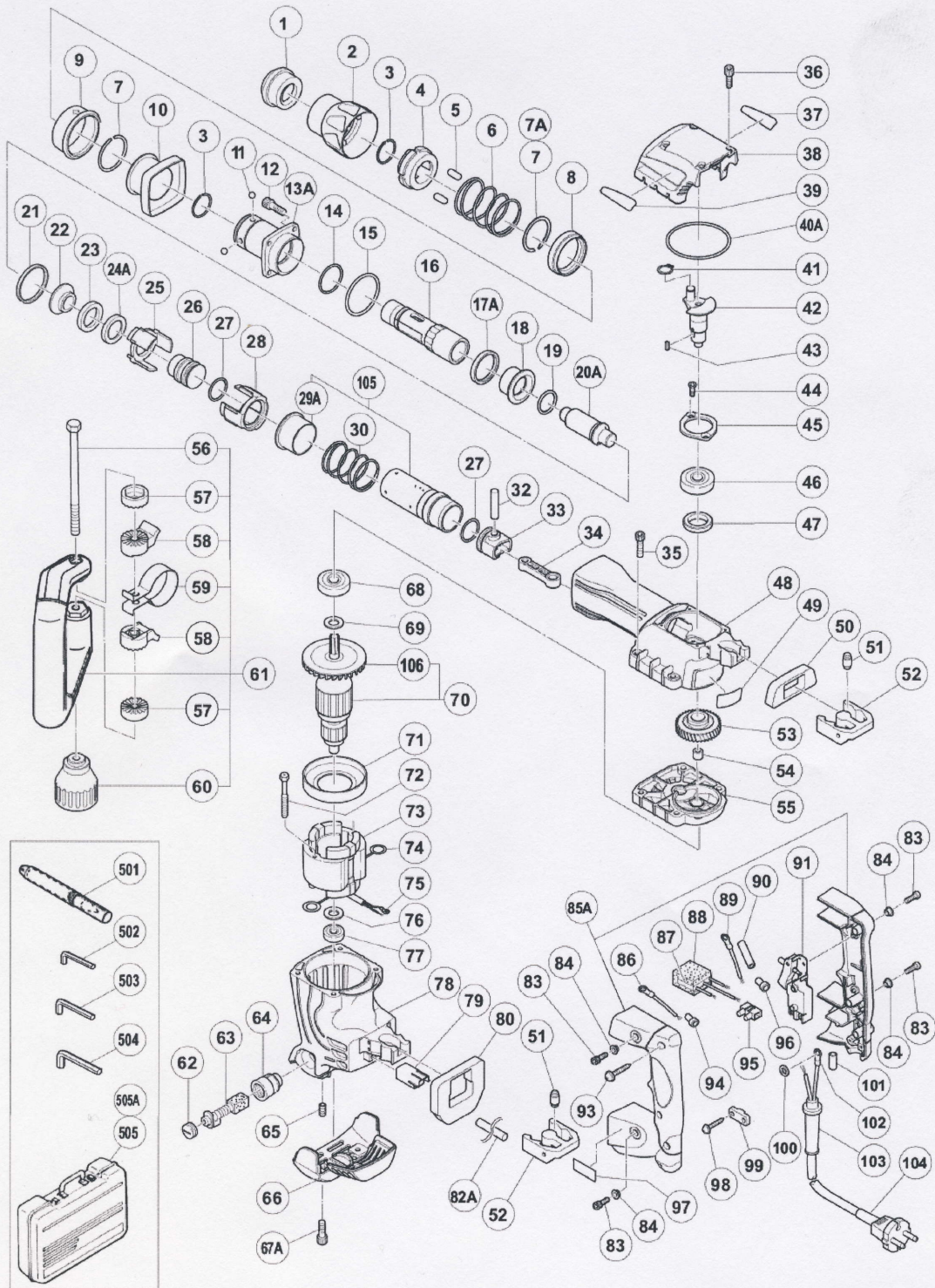


## Hitachi Power Tool Parts List **HITACHI**

SVG Exploded Diagram  
HAMMER H 45MR



Rev. 4

形名  
H45MR

## TEILE

HITACHI


KOMMENTAR



Pos. Nr.	Art.Nr.	BESCHREIBUNG	STUECK Nr.	KOMMENTAR
1	315529	VORDERKAPPE H45MA/H60MA/MB H45MR	1	
2	320802	GRIFF (A) H45MR	1	
3	320803	RING H45MR	2	
4	320804	NADELHALTER H45MR	1	
5	313421	NADELROLLE D8X20 DH40MA/MB H45MR	2	
6	320806	FEDER (A) H45MR	1	
7	317088	SICHERUNGSRING D42 H60MA/MB H45MR	2	TILL 5.2007
* 7	317088	SICHERUNGSRING D42 H60MA/MB H45MR	1	SINCE 6.2007
7A	328538	Anschlagring	1	SINCE 6.2007
8	320810	KUGELHALTER H45MR	1	
9	320807	GRIFF (B) H45MR	1	
10	320808	GRIFF (C) H45MR	1	
11	959150	STAHLKUGEL D6,35 (10ST)	4	
12	981942	INBUSSCHRAUBE M6X25 SELBSTSICH.	4	
13A	320809	VORDERDECKEL H45MR	1	
14	980879	O-RING (S-34) H90SA/VB13Y/VRV16 H45MR	1	
15	990067	O-RING (1AS-50) NV50AF3/DH30PC H30PV/H45MR	1	
16	320805	WERKZEUGAUFNAHME H45MR	1	
17A	322528	Dämpfer (A)	1	
18	320811	HAMMERHALTER (A) H45MR	1	
19	319572	O-RING (S-25) H30PV/H45MR	1	
20A	320813	ZWEITHAMMER H45MR	1	
21	320817	DÄMPFER (C) H45MR	1	
22	320814	HAMMERHALTER (B) H45MR	1	
23	320815	DÄMPFER (B) H45MR	1	
24A	322412	Unterlegscheibe	1	
25	320816	HAMMERHALTER (C) H45MR	1	
26	320822	ANSCHLÄGER H45MR	1	
27	320823	O-RING H45MR	2	
28	320818	ZYLINDERHALTER H45MR	1	
29A	321443	Distanzhülse H45MR	1	SINCE 9.2002
30	320821	FEDER (C) H45MR	1	
32	320826	KOLBENSTIFT H45MR	1	
33	320824	KOLBEN H45MR	1	
34	320825	PLEUEL H45MR	1	
35	986940	INBUSSCHRAUBE M6X45 SELBSTSICH.	4	
36	983162	INBUSSCHRAUBE M4X12 SELBSTS.	4	
37			1	
38	320831	KURBELGEHÄUSENDECKEL H45MR	1	
39			1	
40A	878867	O-RING (JAS02060) NR100A	1	
41	939540	SICHERUNGSRING D10 (10ST), CM9UBY	1	
42	320829	KURBELWELLE H45MR	1	
43	930511	KEIL 4X4X10 H41SA/H90SC u.a. H45MR	1	
44	980760	SCHRAUBE SELBSTSICHERND M5X12	2	
45	980761	LAGERDECKEL (A) H45MR	1	
46	6203DD	KUGELLAGER 6203 DD	1	
47	310119	ÖLDICHTUNG H41SA/H45MA/H45MR	1	
48	320828	ZYLINDER-KURBEL-GEHÄUSE H45MR	1	
49			1	
50	320837	HANDGRIFFDICHTUNG (A) H45MR	1	
51	310124	HANDGRIFFDÄMPFER H41SA/H45MA u.a. H70SA/H45MF	8	
52	310123	DÄMPFERBEFESTIGUNG H41SA/H45MA ua H45MR	2	
53	320830	ERSTES ZAHNRAD H45MR	1	
54	939299	NADELLAGER (M661) DH40MA/MB/YB/FA/MR H45MA/H4	1	
55	320841	GETRIEBEGEHÄUSE KOMPLETT H45MR	1	INCLUD.54
56	317107	SCHRAUBE M8 H60MA/MB/H45MR	1	

## TEILE

HITACHI

Pos. Nr.	Art.Nr.	BESCHREIBUNG	STUECK Nr.	KOMMENTAR
57	317106	HANDGRIFFHALTER (B) H60MA/MB H45MR	2	
58	317105	HANDGRIFFHALTER (A) H60MA/MB H45MR	2	
59	320635	BAND H60MA/MB/H45MR	1	
60	317108	GRIFF H60MA/MB/H45MR	1	
61	317103	SEITENGRIFF KOMPLETT H60MA/MB H45MR	1	INCLUD.56-60
62	935829	BÜRSTENKAPPE H41SA/H45MA/VB13Y VB16Y/H45MR/D	2	
63	999073	KOHLEBÜRSTEN SELBSTABSCH.(PAAR)	2	
64	971001	KOHLLENHALTER H41SA/H45MA/VB13Y VB16Y/H45MR/D	2	
65	938477	INBUSSSTIFTSCHRAUBE M5X8,	2	
66	320834	ENDDECKEL H45MR	1	
67A	321527	Schraube M5x8	2	
68	6201DD	KUGELLAGER 6201 DD, CM5SB	1	
69	302429	STAUBSCHEIBE (B) H45MR/DH40MR	1	
* 70	360571C		1	INCLUD.106
* 70	360571U		1	INCLUD.68,69,76,77,106
* 70	360571E	ANKER 220V-230V H45MR	1	INCLUD.106
* 70	360571F	Anker H45MR	1	INCLUD.106
71	320832	VENTIALTORFÜHRUNG H45MR	1	
72	953174	SCHNEIDSCHRAUBE D5X55	2	
* 73	340519C		1	INCLUD.74
* 73	340519G		1	INCLUD.74,75
* 73	340519H		1	INCLUD.74,75
* 73	340519E	STATOR 220V-230V H45MR	1	INCLUD.74 FOR GBR (230V),EUROPE,NOR,SWE,
* 73	340519E	STATOR 220V-230V H45MR		DEN,FIN,SUI,SAF
* 73	340519F	Stator H45MR (240V)	1	INCLUD.74
74	930703	KOHLLENHALTERKLEMMME DH28Y u.a. H30PV/VB16Y/DH:	2	
75	930804	KABELSCHUH M4.0 (10ST)	1	EXCEPT FOR AUS,GBR,EUROPE,NOR,SWE,DEN, FIN,SUI
76	982631	UNTERLEGSCHNEIBE (A) CR17Y/DH20PB H30PV/DH30PC	1	
77	608VVM	KUGELLAGER 608 VVM, C 8FSHE,	1	
78	320833	GEHÄUSE KOMPLETT H45MR	1	INCLUD.64,65
79	320836	BUCHSE (B) H45MR	1	
80	320838	HANDGRIFFDICHTUNG (B) H45MR	1	
82A	326541	Vinylschlauch DH40MRY	1	
83	991690	INBUSSCHRAUBE M5X12 SELBSTSICH.	4	
84	991711	DISTANZBUCHSE (B) DH38YB1/YF u.a. H45MR	4	
85A	329866	HANDGRIFF (A+B)	1	
86	990861	VERBINDERKABEL H41SA u.a. VB16Y/H45MR	1	FOR AUS,GBR,EUROPE,NOR,SWE,DEN,FIN,SUI
86S	990861	VERBINDERKABEL H41SA u.a. VB16Y/H45MR		SAF
87	994273	KONDENSATOR DIV.TYPEN	1	FOR AUS,GBR,EUROPE,NOR,SWE,DEN,FIN,SUI,
87S	994273	KONDENSATOR DIV.TYPEN		SAF
88	317492	POLSTER (B) DH25PB/H30PV/DH30PC H45MR	1	FOR NOISE SUPPRESSOR
89	981974	VERBINDERKABEL DH28Y/H41SA/H45MR H60MA/MB/H6	1	FOR AUS,GBR,EUROPE,NOR,SWE,DEN,FIN,SUI,
89S	981974	VERBINDERKABEL DH28Y/H41SA/H45MR H60MA/MB/H6		SAF
90			2	FOR USA,CAN,MEX
91	306143	SCHALTER (B) H45MA/H60MA/MB u.a. H45MR	1	
93	307028	SCHNEIDSCHRAUBE D4X25 MIT FLANSCH (SCHWARZ)	3	
94	959140	VERBINDER 50091 (10ST) DIV.TYPEN	1	FOR AUS,GBR,EUROPE,NOR,SWE,DEN,FIN,SUI,
94S	959140	VERBINDER 50091 (10ST) DIV.TYPEN		SAF
95	938307	SCHRAUBKLEMMME 1-REIHIG DIV.TYPEN	1	FOR AUS,GBR,EUROPE,NOR,SWE,DEN,FIN,SUI,
95S	938307	SCHRAUBKLEMMME 1-REIHIG DIV.TYPEN		USA,CAN,MEX,SAF
96	959141	VERBINDER 50092 (10ST) DIV.TYPEN (USA, CAN), C8FS	1	EXCEPT FOR USA,CAN
97			1	
98	984750	Schneidschraube D4X16 mit Flansch, C8FSHE, CM5SB, CI	2	
* 99	960266	KABELKLEMMME DIV.TYPEN, CM9UBY	1	
* 99	981987Z		1	FOR SUI

\*:ALTERNATIVTEILE

## TEILE

Pos. Nr.	Art.Nr.	BESCHREIBUNG	STUECK Nr.	KOMMENTAR
100	949423	UNTERLEGSCHIEBE M4 (10ST)	1	FOR AUS,GBR,EUROPE,NOR,SWE,DEN,FIN,SUI,SAF
100S	949423	UNTERLEGSCHIEBE M4 (10ST)		SAF
101	981373	Kanalhülse für Kabel (D) DIV.TYPEN, CM9UBY	2	FOR CORD
* 102	980063	KABELSCHUH C7U/CJ65V2/H70SA/G13V G13YD/G13SBz	1	FOR AUS,GBR (110V),EUROPE,NOR,SWE,DEN,FIN,SUI,SAF
* 102	980063	KABELSCHUH C7U/CJ65V2/H70SA/G13V G13YD/G13SBz		FIN,SUI,SAF
* 102	992810	KABELSCHUH M4 (ISO-ROT)	1	FOR GBR (230V)
* 102	930804	KABELSCHUH M4.0 (10ST)	1	FOR USA,CAN,MEX
* 103	953327	KABELKNICKSCHUTZ D8.8 DIV.TYPEN, CM5SB	1	
* 103	938051	Kabelknickschutz D10.1 DIV.TYPEN,	1	
* 104	500394Z		1	(CORD ARMOR D10.1)
* 104	500408Z		1	(CORD ARMOR D8.8) FOR AUS
* 104	500446Z		1	(CORD ARMOR D8.8) FOR GBR (230V)
* 104	500454Z		1	(CORD ARMOR D8.8) FOR GBR (110V)
* 104	500390Z		1	(CORD ARMOR D8.8) FOR EUROPE,NOR,SWE, DEN,FIN,SAF
* 104	500390Z			DEN,FIN,SAF
* 104	500391Z		1	(CORD ARMOR D8.8) FOR SUI
* 104	500434Z		1	(CORD ARMOR D8.8) FOR USA,CAN,MEX
105	321442	ZYLINDER KOMPLETT H45MR	1	INCLUD.29A
106	321640	Ventilator DH40SR	1	

## STANDARDZUBEHÖR

Pos. Nr.	Art.Nr.	BESCHREIBUNG	STUECK Nr.	KOMMENTAR
501	313471		1	
502	943277	INBUSSCHLÜSSEL D3(M4)	1	FOR AUS,GBR,EUROPE,NOR,SWE,DEN,FIN,SUI,SAF
502S	943277	INBUSSCHLÜSSEL D3(M4)		SAF
503	944458	INBUSSCHLÜSSEL D4(M5)	1	
504	944459	INBUSSCHLÜSSEL D5(M6)	1	
505	320842	KOFFER H45MR	1	
505A	323370	Plastik-Transportkoffer (groß) H45MR	1	FOR AUS,GBR,EUROPE,NOR,SWE,DEN,FIN,SUI, USA,CAN,MEX
* 505A	323370	Plastik-Transportkoffer (groß) H45MR		USA,CAN,MEX

## SONDERZUBEHÖR

Pos. Nr.	Art.Nr.	BESCHREIBUNG	STUECK Nr.	KOMMENTAR
601	313472		1	
602	313473		1	
603	313474		1	
604	313475		1	
605	313476		1	
606A	313478		1	
607	313479		1	
608	981840	HAMMERFETT (A) 30G	1	
609	308471	HAMMERFETT 70G TUBE	1	
610	980927	HAMMERFETT 500G	1	EXCEPT FOR USA,CAN
611	321713	Reparatur-Set H45MR	1	INCLUD.12,14,15,19,21,23,24,27,36,40A,
611S	321713	Reparatur-Set H45MR		41,63,608
612	323131		1	
613	323131		1	