

Hitachi Power Tools

LIST NO. E484

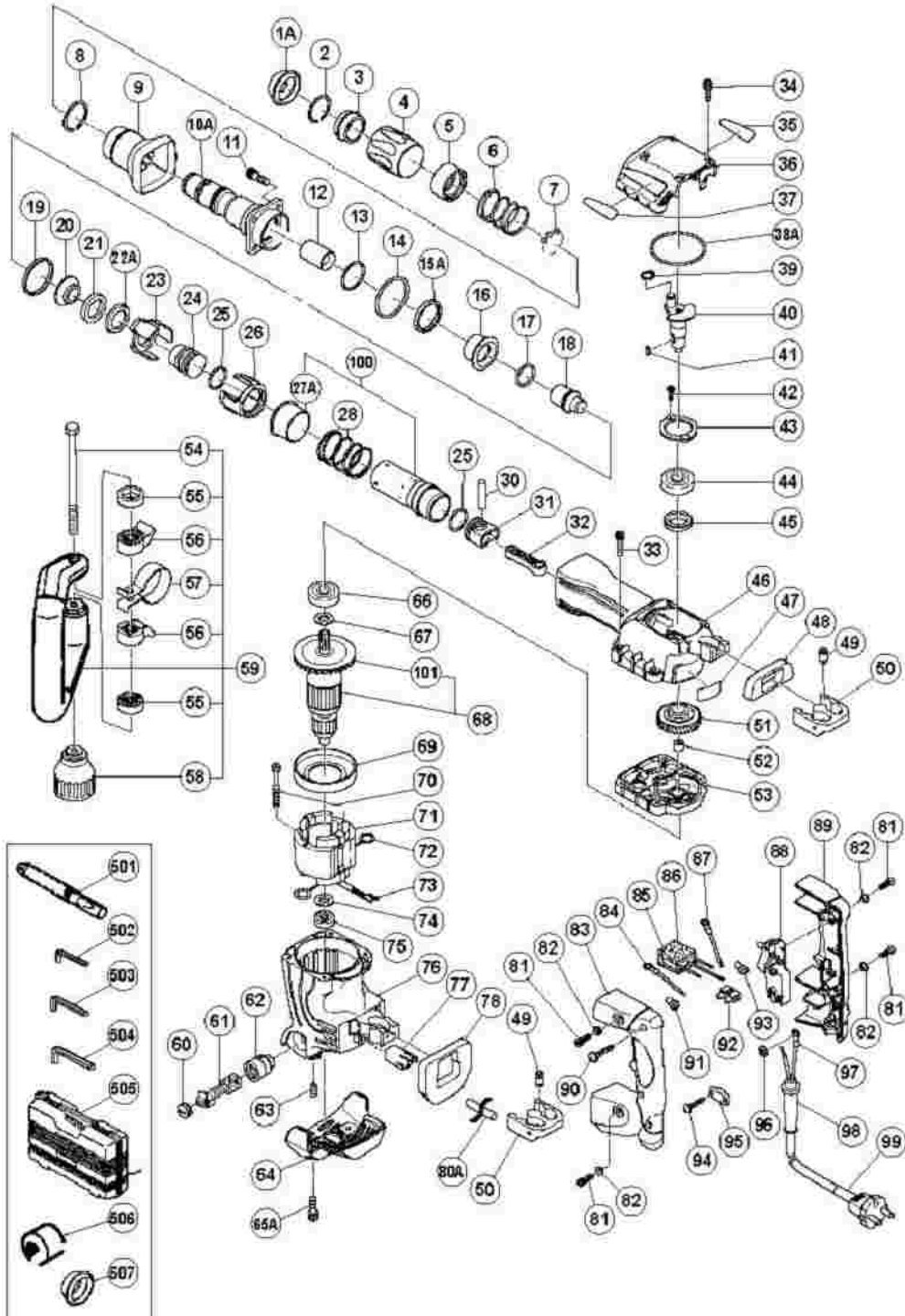
ELECTRIC TOOL PARTS LIST

■ HAMMER

2007 · 6 · 1

Model H 45SR

(E1-5)



H45SR

Pos. Nr.	Art. Nr.	Beschreibung	Stueck	Kommentar
1A	322-487	Vorderkappe (B) H45SR	1	
2	320-846	O-Ring	1	
3	320-847	Hulse H45MR	1	
4	320-845	Griff (A) H45SR	1	
5	320-848	Kugelhalter H45MR	1	
6	320-849	Feder (A) H45MR	1	
7	944-941	STAHLKUGEL D7 94 CR10V/DH25V	6	
8	320-850	O-Ring H45MR	1	
9	320-851	Griff (B) H45SR	1	
10A	320-915	Vorderdeckel H45SR	1	INCLUD.12
11	981-942	INBUSSCHRAUBE M6X25 SELBSTSICH	4	
12	320-853	Hulse H45SR	1	
13	980-879	O-RING (S-34) H90SA/VB13Y/VRV16 H45MR	1	
14	990-067	O-RING (1AS-50) NV50AF3/DH30PC H30PV/H45	1	
15A	322-528	Dampfer (A)	1	
16	320-811	HAMMERHALTER (A) H45MR	1	
17	319-572	O-RING (S-25) H30PV/H45MR	1	
18	320-854	Zweithammer H45SR	1	
19	320-817	DAMPFER (C) H45MR	1	
20	320-814	HAMMERHALTER (B) H45MR	1	
21	320-815	DAMPFER (B) H45MR	1	

22A	322-412	Unterlegscheibe	1	
23	320-816	HAMMERHALTER (C) H45MR	1	
24	320-822	ANSCHLAGER H45MR	1	
25	320-823	O-RING H45MR	2	
26	320-818	ZYLINDERHALTER H45MR	1	
27A	321-443	Distanzhülse H45MR	1	SINCE 9.2002
28	320-821	FEDER (C) H45MR	1	
30	320-826	KOLBENSTIFT H45MR	1	
31	320-824	KOLBEN H45MR	1	
32	320-825	PLEUEL H45MR	1	
33	986-940	INBUSSCHRAUBE M6X45 SELBSTSICH	4	
34	983-162	INBUSSCHRAUBE M4X12 SELBSTS	4	
35			1	
36	320-831	KURBELGEHAUSENDECKEL H45MR	1	
37			1	
38A	878-867	O-RING (JAS02060) NR100A	1	
39	939-540	SICHERUNGSRING D10 (10ST)	1	
40	320-829	KURBELWELLE H45MR	1	
41	930-511	KEIL 4X4X10 H41SA/H90SC u a H45MR	1	
42	980-760	SCHRAUBE SELBSTSICHERND M5X12	2	
43	980-761	LAGERDECKEL (A) H45MR	1	
44	620-3DD	KUGELLAGER 6203 DD	1	
	310-	OLDICHTUNG		

45	119	H41SA/H45MA/H45MR	1	
46	320-828	ZYLINDER-KURBEL-GEHAUSE H45MR	1	
47			1	
48	320-837	HANDGRIFFDICHTUNG (A) H45MR	1	
49	310-124	HANDGRIFFDAMPFER H41SA/H45MA u a H70SA/	8	
50	310-123	DAMPFERBEFESTIGUNG H41SA/H45MA ua H45MR	2	
51	320-830	ERSTES ZAHNRAD H45MR	1	
52	939-299	NADELLAGER (M661) DH40MA/MB/YB/FA/MR H45	1	
53	320-841	GETRIEBEGEHAUSE KOMPLETT H45MR	1	INCLUD.52
54	317-107	SCHRAUBE M8 H60MA/MB/H45MR	1	
55	317-106	HANDGRIFFHALTER (B) H60MA/MB H45MR	2	
56	317-105	HANDGRIFFHALTER (A) H60MA/MB H45MR	2	
57	320-635	BAND H60MA/MB/H45MR	1	
58	317-108	GRIFF H60MA/MB/H45MR	1	
59	317-103	SEITENGRIFF KOMPLETT H60MA/MB H45MR	1	INCLUD.54-58
60	935-829	BURSTENKAPPE H41SA/H45MA/VB13Y VB16Y/H45	2	
61	999-043	KOHLLENBURSTEN (PAAR)	2	
61	999-073	KOHLLEBURSTEN SELBSTABSCH (PAAR)	2	"FOR TPE,SIN,MAL,SRI,AUS,SAF,YEN,EUROP
62	971-001	KOHLLENHALTER H41SA/H45MA/VB13Y VB16Y/H45	2	
63	938-477	INBUSSTIFTSCHRAUBE M5X8	2	
64	320-834	ENDDECKEL H45MR	1	
65A	321-527	Schraube M5x8	2	
	620-			

66	1DD	KUGELLAGER 6201 DD	1	
67	302-429	STAUBSCHEIBE (B) H45MR/DH40MR	1	
68	360-571C		1	INCLUD.101
68	360-571E	ANKER 220V-230V H45MR	1	INCLUD.101
68	360-571F	Anker H45MR	1	INCLUD.101
69	320-832	VENTIALTORFUHRUNG H45MR	1	
70	953-174	SCHNEIDSCHRAUBE D5X55	2	
71	340-519C		1	INCLUD.72
71	340-519H		1	"INCLUD.72,73"
71	340-519E	STATOR 220V-230V H45MR	1	"INCLUD.72 FOR SAF,YEN,EUROPE,KOI
71	340-519F	Stator H45MR (240V)	1	INCLUD.72
72	930-703	KOHLLENHALTERKLEMME DH28Y u a H30PV/VB16	2	
73	930-804	KABELSCHUH M4 0 (10ST)	1	
74	982-631	UNTERLEGSCHNEIBE (A) CR17Y/DH20PB H30PV/D	1	
75	608-VVM	KUGELLAGER 608 VVM	1	
76	320-833	GEHAUSE KOMPLETT H45MR	1	"INCLUD.62,63"
77	320-836	BUCHSE (B) H45MR	1	
78	320-838	HANDGRIFFDICHTUNG (B) H45MR	1	
80A	326-541	Vinylschlauch DH40MRY	1	
81	991-690	INBUSSCHRAUBE M5X12 SELBSTSICH	4	
82	991-711	DISTANZBUCHSE (B) DH38YB1/YF u a H45MR	4	
83	320-840	HANDGRIFF (B) H45MR	1	
84	990-861	VERBINDERKABEL H41SA u a VB16Y/H45MR	1	"FOR TPE,AUS,SAF,YEN,EUROPE"

85	994-273	KONDENSATOR DIV TYPEN	1	"FOR TPE,AUS,SAF,YEN,EUROPE"
85	930-039	KONDENSATOR C6U-C13U u a	1	FOR KOR
86	317-492	POLSTER (B) DH25PB/H30PV/DH30PC H45MR	1	"FOR TPE,AUS,SAF,YEN,EUROPE"
87	981-974	VERBINDERKABEL DH28Y/H41SA/H45MR H60MA/M	1	"FOR TPE,AUS,SAF,YEN,EUROPE,KOR"
88	306-143	SCHALTER (B) H45MA/H60MA/MB u a H45MR	1	
89	320-839	HANDGRIFF (A) H45MR	1	
90	307-028	SCHNEIDSCHRAUBE D4X25 MIT FLANSCH (SCHWA	3	
91	959-140	VERBINDER 50091 (10ST) DIV TYPEN	1	"FOR TPE,AUS,SAF,YEN,EUROPE"
92	938-307	SCHRAUBKLEMME 1- REIHIG DIV TYPEN	1	"FOR TPE,HKG,AUS,SAF,YEN,EUROPE"
93	959-141	VERBINDER 50092 (10ST) DIV TYPEN	2	EXCEPT FOR HKG
94	984-750	SCHNEIDSCHRAUBE D4X16 MIT FLANSCH	2	
95	960-266	KABELKLEMME DIV TYPEN	1	
96	949-423	UNTERLEGSCHIEBE M4 (10ST)	1	"FOR AUS,SAF,YEN,EUROPE"
97	980-063	KABELSCHUH C7U/CJ65V2/H70SA/G13V G13YD/G	1	FOR CORD
98	953-327	KABELKNICKSCHUTZ D8 8 DIV TYPEN	1	
98	938-051	KABELKNICKSCHUTZ D10 1 DIV TYPEN	1	
99	500-394Z		1	(CORD ARMOR D10.1)
99	500-424Z		1	"(CORD ARMOR D8.8) FOR SIN,MAL,SR
99	500-390Z		1	"(CORD ARMOR D8.8) FOR KOR,SAF,YEN"
99	500-239Z		1	(CORD ARMOR D10.1) FOR TPE
99	500-408Z		1	(CORD ARMOR D8.8) FOR AUS

99	500-440Z		1	(CORD ARMOR D8.8) FOR HKG
100	321-442	ZYLINDER KOMPLETT H45MR	1	INCLUD.27A
101	321-640	Ventilator DH40SR	1	
501	980-752		1	"EXCEPT FOR AUS,SAF,YEN,EUROPE"
502	943-277	INBUSSCHLUSSEL D3(M4)	1	"FOR TPE,AUS,SAF,YEN,EUROPE"
503	944-458	INBUSSCHLUSSEL D4(M5)	1	
504	944-459	INBUSSCHLUSSEL D5(M6)	1	
505	320-842	KOFFER H45MR	1	
506	985-468	STAUBSCHUTZKAPPE H55SA/DH50SA1	1	
507	320-844	Vorderkappe H45SR	1	
601	234-001		1	"EXCEPT FOR AUS,SAF,YEN,EUROPE"
602	981-922	SPITZMEISSEL 280MM 17MM 6-KANT Neue Art	1	
603	980-753		1	
603	981-923	SPITZMEISSEL 450MM 17MM 6-KANT Neue Art	1	"FOR AUS,SAF,YEN,EUROPE"
604	982-705		1	
604	981-924	SPATMEISSEL 280X50 17MM 6-KANT Neue Art	1	"FOR AUS,SAF,YEN,EUROPE"
605	982-710		1	
605	955-186	AUFNAHMASCH L250 13MM 6-KANT FUR RAMM-U	1	"FOR AUS,SAF,YEN,EUROPE"
606	955-183		1	
607	955-181	RAMMPLATTE o140MM DH40YB/H41SA	1	

608	982-702		1	
608	981-929	HOHLMEISSEL 26X300 17MM 6-KANT	1	"FOR AUS,SAF,YEN,EUROPE"
609	982-703		1	
609	981-930	Ankeradapter No 40	1	"FOR AUS,SAF,YEN,EUROPE"
610	982-704		1	
610	981-931	Ankeradapter No 50	1	"FOR AUS,SAF,YEN,EUROPE"
611A	323-357		1	"EXCEPT FOR AUS,SAF,YEN,EUROPE"
613	944-574		1	
614	318-085	AUSBLASER DH30PB/DH30PC	1	
615	982-711		1	
615	956-126	SCHAUFEL 405MM 17MM 6- KANT	1	"FOR AUS,SAF,YEN,EUROPE"
616	981-840	HAMMERFETT (A) 30G	1	
617	308-471	HAMMERFETT 70G TUBE	1	
618	980-927	HAMMERFETT 500G	1	
619	323-131		1	
620	323-131		1	