

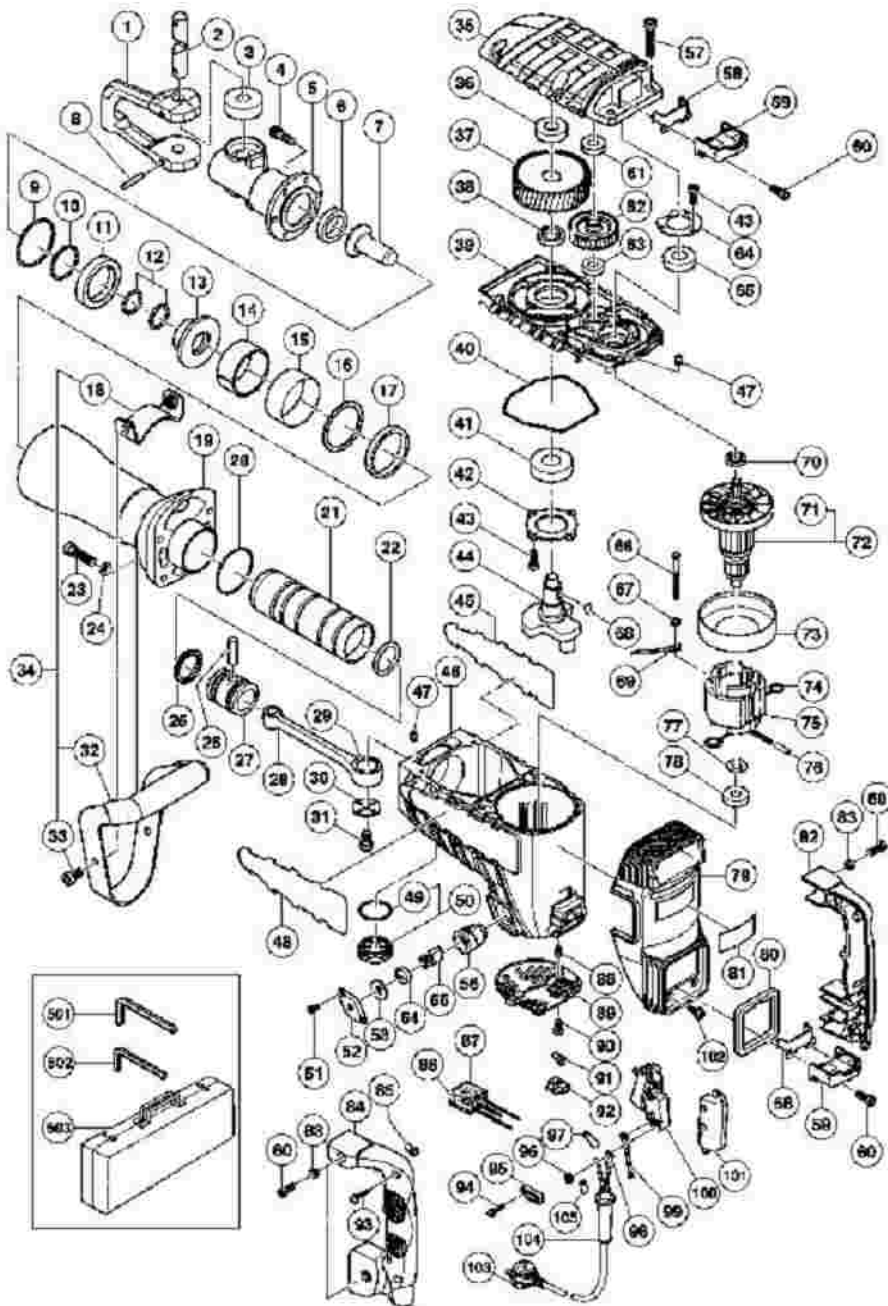
Hitachi Power Tools

LIST NO. E487

ELECTRIC TOOL PARTS LIST

DEMOLITION HAMMER
Model H 65SD2

2005 · 5 · 10
(E1)



H65SD2

Pos. Nr.	Art. Nr.	Beschreibung	Stueck	Kommentar	Beschreibung
1	318-221	WERKZEUGHALTER H65SD	1		RETAINER
2	318-222	HEBELSTIFT H65SD	1		LEVER PIN
3	305-621	WERKZEUGHALTERDAMPFER H65SD/ H90SC/SE	2		RETAINER DAMPER
4	306-437	INBUSSCHRAUBE M8X30 SELBSTSICH	6		NYLOCK HEX. SOCKET HD. BOI M8X30
5	318-223	VORDERDECKEL H65SD	1		FRONT COVER
6	996-369	DAMPFER (B) H65SD	1		DAMPER (B)
7	324-601	Zweithammer H65SD2	1		SECOND HAMMI
8	994-416	ROLLSTIFT D6X55 H65SD/H90SE	2		ROLL PIN D6X55
9	998-428	O-RING (C) H65SB/SD/H70SA	1		O-RING (C)
10	998-427	O-RING (B) H65SB/SD/H70SA	1		O-RING (B)
11	998-433	DAMPFER (A) H65SB/SD/H70SA	1		DAMPER (A)
12	323-731	O-Ring H65SB2	2		O-RING (I.D 26.5)
13	323-730	Buchse H65SB2	1		SHANK SLEEVE
14	956-963	RING H65SB/SD/H70SA	1		MOUTH
15	956-962	RINGABDECKUNG H65SB/SD/H70SA	1		MOUTH COVER
16	323-729	Unterlegscheibe H65SB2	1		MOUTH WASHEI
17	956-960	URETHANRING H65SB/SD/H70SA	1		URETHANE RING
18	320-374	Handgriff komplett H65	1		HANDLE STAY (W/NUT)
19	323-728	Zylindergehäuse H65SB2	1		CYLINDER CASE
20	956-996	O-RING (1AS-60) DIV TYPEN	1		O-RING (1AS-60)
21	323-724	Anschlager H65SB2	1		STRIKER
	998-				

22	414	O-RING (A) H65SB/SD/H70SA	1		O-RING (A)
23	306-163	INBUSSCHRAUBE M8X35 SELBSTSICH	4		NYLOCK HEX. SOCKET HD. BOI M8X35
24	323-212	Bolzenscheibe H65SD2	4		BOLT WASHER M (BLACK)
25	998-415	OLDICHTUNG (A) H65SB/SD/H70SA	1		OIL SEAL (A)
26	944-928	KOLBENSTIFT H65SB/SD/H70SA	1		PISTON PIN
27	998-413	KOLBEN H65SB/SD/H70SA	1		PISTON
28	998-434	PLEUEL KOMPLETT H65SB/SD/H70SA	1	INCLUD.29	CONNECTING RO ASS'Y
29	944-921	NADELLAGER(NTN8E-NK18/20RDO)	1		NEEDLE BEARIN (NTN 8E-NK 18/20 RDO)
30	956-955	U-SCHEIBE KURBELWELLE H65SB/SD H70SA	1		CRANK WASHER
31	996-364	INBUSSCHRAUBE M8X16 SELBSTSICH	1		SEAL LOCK HEX SOCKET HD. BOI M8X16
32	306-166	SEITENGRIFF H65SB/SD	1		GRIP
33	320-375	Sechskantschraube M8x16	2		NYLOCK HEX. SOCKET HD. BOI M8X16
34	306-165	SEITENGRIFF KOMPLETT H65SB/SD	1	"INCLUD.18,32,33"	SIDE HANDLE ASS'Y
35	323-723	Getriebedeckel H65SB2	1		GEAR COVER
36	630-2VV	KUGELLAGER 6302VV	1		BALL BEARING 6302VVCMP2L
37	944-916	ZAHNRAD H65SB/SD/H70SA	1		FINAL GEAR
38	944-915	ABSTANDSCHEIBE (B) H65SB/SD/H70SA	1		DISTANCE RING
39	323-722	Innengehäuse HH65SB2	1		INNER COVER
40	323-725	Sicherungsring H65SB2	1		SEAL RING
41	620-5DD	KUGELLAGER 6205 DD	1		BALL BEARING 6205DDCMP2L
42	956-949	LAGERDECKEL H65SB/SD/H70SA	1		BEARING COVER
43	990-	INBUSSCHRAUBE M5X16	7		SEAL LOCK HEX SOCKET HD. BOI

	079	SELBSTSICH			M5X16
44	998-430	KURBELWELLE H65SB/SD/H70SA	1		CRANK SHAFT
45			1		HITACHI LABEL
46	323-721	Gehäuse kpl H65SB2	1	"INCLUD.56,88"	HOUSING ASS'Y
47	944-918	ROLLSTIFT D5X15 8 H65SB/SD/H70SA	2		PIN D5X15.8
48			1		HITACHI LABEL
49	980-717	O-RING (S-38) H65SD/H90SC/SE H30PV	1		O-RING (S-38)
50	990-945	OLKAPPE KOMPL H65SB/SD/H90SC/SE (INKL A	1	INCLUD.49	OIL CAP ASS'Y
51	877-838	INBUSSCHRAUBE M4X8 SELBSTSICHERND	4		SEAL LOCK HEX SOCKET HD. BOI M4X8
52	323-727	Kappe H65SB2	2		CAP COVER
53	944-960	KAPPENGUMMI H65SB/SD/H70SA	2		CAP RUBBER
54	940-540	KOHLLENKAPPE C13U/M12V/DIV TYPEN H70SA	2		BRUSH CAP
55	999-086	Abschaltkohlebursten (Paar)	2		CARBON BRUSH (AUTO STOP TYE (1 PAIR)
56	956-984	KOHLLENHALTER H60MA/MB/H65SB/SD H70SA	2		BRUSH HOLDER
57	986-940	INBUSSCHRAUBE M6X45 SELBSTSICH	6		SEAL LOCK HEX SOCKET HD. BOI M6X45
58	980-750	FUHRUNGSPLATTE DH50SA1/SB u a	2		GUIDE PLATE
59	980-727	HANDGRIFFGUMMI DH50SA1/H55SA u a	2		HANDLE RUBBE
60	990-079	INBUSSCHRAUBE M5X16 SELBSTSICH	8		SEAL LOCK HEX SOCKET HD. BOI M5X16
61	620-1VV	KUGELLAGER 6201 VV	1		BALL BEARING 6201VVCMP2L
62	956-948	GEGENZAHRAD H65SB/SD/H70SA	1		COUNTER GEAR
63	600-1VV	KUGELLAGER 6001 VV	1		BALL BEARING 6001VVCMP2L
64	944-911	LAGERDECKEL (A) H65SB/SD/H70SA	1		BEARING COVER (A)
65	620-3DD	KUGELLAGER 6203 DD	1		BALL BEARING 6203DDCMP2L

66	960-251	SCHNEIDSCHRAUBE D5X65 (DIV TYPEN)	2		HEX. HD. TAPPING SCREW D5X65
67	956-764	SPEZIALSCHEIBE H65SB/SD/H70SA u a	2		SPECIAL WASHER
68	956-850	HALBMONDKEIL 4X16 H65SB/SD/H70SA	2		WOODRUFF KEY 4X16
69	994-190	VERBINDERKABEL H65SB/SD	1	"EXCEPT FOR USA,CAN"	INTERNAL WIRE
70	944-907	DISTANZRING (A) H65SB/SD/H70SA	1		DISTANCE RING (A)
71	996-370	LUFTERFLUGEL H60MA/MB/H65SB u a H70SA	1		FAN
72	360-286U		1	"INCLUD.65,71,77,78"	ARMATURE ASS 110V-120V
72	360-286E	ANKER 220V-230V H65SB/SD/H70SA	1	INCLUD.71	ARMATURE ASS 220V-230V
73	306-098	LUFTFUHRUNG H65SB/SD/H70SA	1		FAN GUIDE
74	945-932	KOEHLENHALTERKLEMME H60MA/MB u a H70SA	2		BRUSH TERMINAL
75	340-259J		1	INCLUD.74	STATOR ASS'Y 110V
75	340-259G		1	INCLUD.74	STATOR ASS'Y 115V-120V
75	340-259K		1	INCLUD.74	STATOR ASS'Y 230V
76	322-530	Gummi H65SB2	1		VINYL TUBE
77	944-954	LAGERSCHEIBE F30A/H65SB/SD u a H70SA	1		BEARING WASH
78	620-1DD	KUGELLAGER 6201 DD	1		BALL BEARING 6201DDCMPS2L
79	323-740	Hintere Abdeckung H65SB2	1		BACK COVER
80	323-741	Handgriffdichtung H65SB2	1		HANDLE PACKING
81			1		NAME PLATE
82	323-743	Handgriff (A) H65SB2	1		HANDLE (A)
83	991-711	DISTANZBUCHSE (B) DH38YB1/YF u a H45MR	4		DISTANCE PIECE (B)
84	323-744	Handgriff (B) H65SB2	1		HANDLE (B)
85	959-141	VERBINDER 50092 (10ST) DIV TYPEN	1	"EXCEPT FOR USA,CAN"	CONNECTOR 500 (10 PCS.)
86	994-	KONDENSATOR DIV TYPEN	1	"EXCEPT FOR	NOISE

	273			USA,CAN"	SUPPRESSOR
87	930-153	POLSTER (B) SELBSTKLEB DIV TYPEN	1	"EXCEPT FOR USA,CAN"	SUPPORT (B)
88	938-477	INBUSSTIFTSCHRAUBE M5X8	2		HEX. SOCKET SE SCREW M5X8
89	323-726	Abdeckkappe H65SB2	1		TAIL COVER
90	991-690	INBUSSCHRAUBE M5X12 SELBSTSICH	2		SEAL LOCK HEX SOCKET HD. BOI M5X12
91	959-140	VERBINDER 50091 (10ST) DIV TYPEN	1	"EXCEPT FOR USA,CAN"	CONNECTOR 500 (10 PCS.)
92	938-307	SCHRAUBKLEMME 1-REIHIG DIV TYPEN	1		PILLAR TERMIN.
93	307-028	SCHNEIDSCHRAUBE D4X25 MIT FLANSCH (SCHWA	3		TAPPING SCREW (W/FLANGE) D4X (BLACK)
94	984-750	SCHNEIDSCHRAUBE D4X16 MIT FLANSCH	2		TAPPING SCREW (W/FLANGE) D4X
95	960-266	KABELKLEMME DIV TYPEN	1		CORD CLIP
95	981-987Z		1	FOR SUI	CORD CLIP
96	949-423	UNTERLEGSCHLEIBE M4 (10ST)	1	"EXCEPT FOR USA,CAN"	WASHER M4 (10 PCS.)
97	996-438	ISO-SCHLAUCH(A)(ID 7X0 5X50) H65SB/SD/H9	2		VINYL TUBE (A) (I.D.7XT0.5X50)
98	980-063	KABELSCHUH C7U/CJ65V2/H70SA/G13V G13YD/G	1	FOR CORD	TERMINAL
98	930-804	KABELSCHUH M4 0 (10ST)	1	FOR CORD	TERMINAL M4.0 PCS.)
99	981-974	VERBINDERKABEL DH28Y/H41SA/H45MR H60MA/M	1	"EXCEPT FOR GBR,USA,CAN"	INTERNAL WIRE
99	306-681		1	FOR GBR	INTERNAL WIRE
100	306-143	SCHALTER (B) H45MA/H60MA/MB u a H45MR	1		SWITCH (B) (1P SCREW TYPE) W/LOCK
101	323-742	Halter H65SB2	1		SUPPORT
102	322-142	Sechskantschraube M5x12	4		NYLOCK BOLT (W/FLANGE) M5X
103	500-390Z		1	(CORD ARMOR D10.7)	CORD
				"(CORD ARMOR	

103	500-453Z		1	D10.7) FOR USA,CAN"	CORD
103	500-391Z		1	(CORD ARMOR D10.7) FOR SUI	CORD
103	500-466Z		1	(CORD ARMOR D10.7) FOR GBR (110V)	CORD
103	500-450Z		1	(CORD ARMOR D10.7) FOR GBR (230V)	CORD
104	940-778	KABELKNICKSCHUTZ D10 7 DIV TYPEN	1		CORD ARMOR D10.7
105	981-373	ADERENDHULSE (D) DIV TYPEN	2	FOR CORD	TUBE (D)
501	872-422	INBUSSCHLUSSEL D6(M8)	1		HEX. BAR WREN 6MM
502	943-277	INBUSSCHLUSSEL D3(M4)	1		HEX. BAR WREN 3MM
503	314-179	TRANSPORTKOFFER H65SB/SD	1		CASE (STEEL)
601	985-231	FLACHMEISSEL 25X520 28MM 6-KANT Neue Art	1		COLD CHISEL 520MM (HEX. SHANK TYPE)
602	985-232	SPATMEISSEL 75X520 28MM 6-KANT Neue Art	1		CUTTER W75X520MM (HE SHANK TYPE)
603	985-233	SCHAUFEL L=546MM 28MM 6-KANT	1		SCOOP 546L (HE SHANK TYPE)
604	996-372		1		BULL POINT 410MM (HEX. SHANK TYPE)
605	996-373	FLACHMEISSEL 25X410 28MM 6-KANT	1		COLD CHISEL 410MM (HEX. SHANK TYPE)
606	996-374	SPATMEISSEL 75X410 28MM 6-KANT NEUE ART	1		CUTTER W75X410MM (HE SHANK TYPE)
607	980-927	HAMMERFETT 500G	1		GREASE FOR HAMMER.HAMM DRILL (500G)
608	981-840	HAMMERFETT (A) 30G	1		GREASE (A) FOR HAMMER.HAMM DRILL (30G)
609	308-471	HAMMERFETT 70G TUBE	1		GREASE FOR HAMMER.HAMM DRILL (70G)