

Hitachi Power Tools

LIST NO: E459

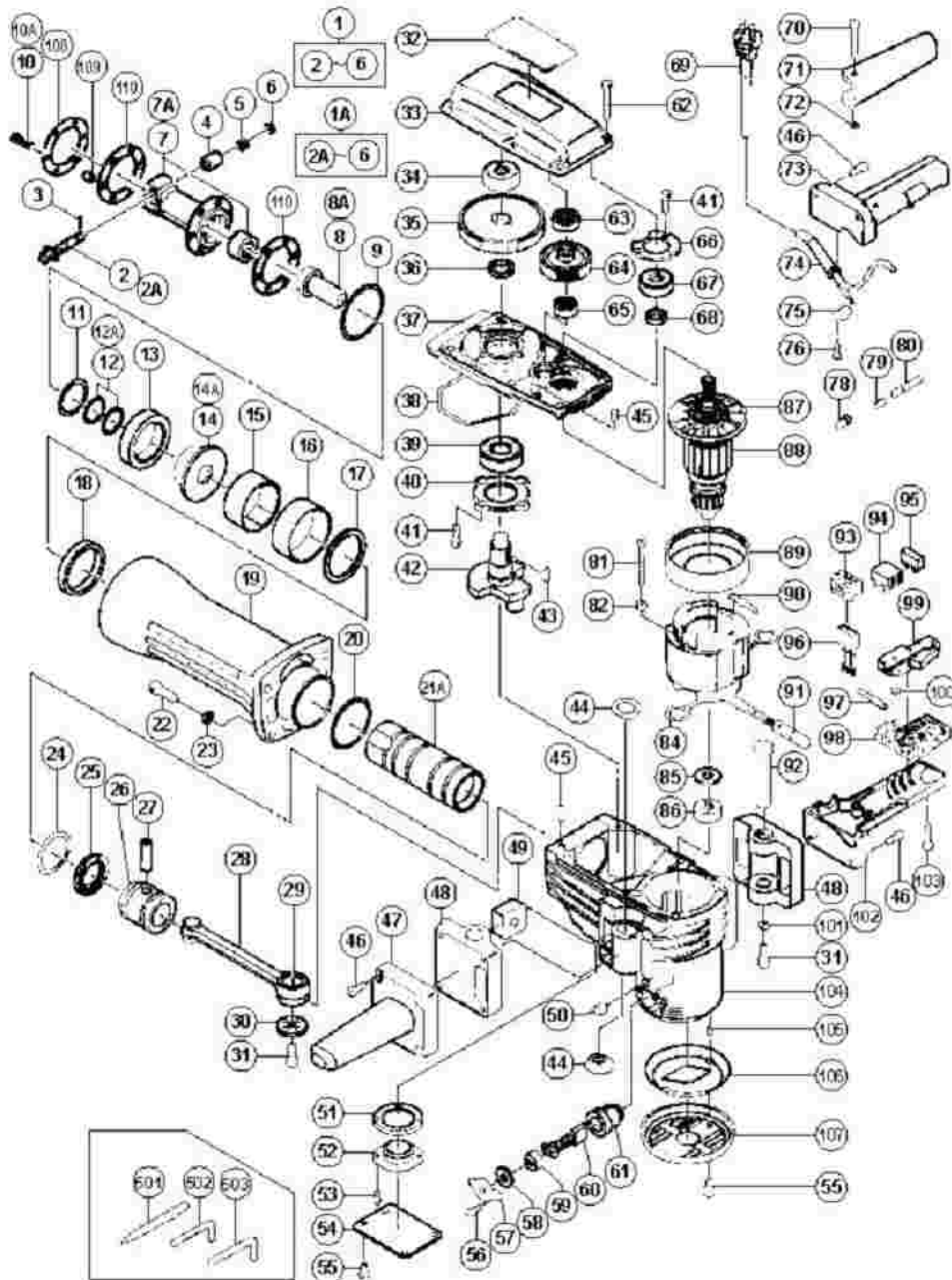
ELECTRIC TOOL PARTS LIST

■ HAMMER

2005 • 12 • 1

Model H 70SA

(E1-1)



H70SA

Pos. Nr.	Art. Nr.	Beschreibung	Stueck	Kommentar	Bes
1	318-656	ANSCHLAGHEBEL KOMPLETT H70SA	1	"INCLUD.2,3-6 TILL 6.2005"	STOP I
1A	323-747	Anschlaghebel H65SB2	1	INCLUD.2A-6 SINCE 7.2005	STOP I
2	998-423	ANSCHLAGHEBEL H65SB/H70SA	1	TILL 6.2005	STOP I
2A	323-748	Anschlaghebel H65SB2	1	SINCE 7.2005	STOP I
3	998-426	NADELROLLE H65SB/H70SA	1		NEEDI
4	998-424	FEDERHULSE H65SB/H70SA	1		SPRIN
5	956-975	ANSCHLAGFEDER H65SB/H70SA	1		LEVER
6	998-425	DAMPFER (B) H65SB/H70SA	1		DAMP.
7	998-435	VORDERDECKEL H65SB/H70SA	1	TILL 6.2005	FRONT
7A	323-733	Vordergehäuse kpl H65SB2	1	SINCE 7.2005	FRONT
8	998-420	ZWEITHAMMER H65SB/H70SA	1	TILL 6.2005	SECON
8A	323-732	Zweithammer H65SB2	1	SINCE 7.2005	SECON
9	998-428	O-RING (C) H65SB/SD/H70SA	1		O-RING
10	306-437	INBUSSCHRAUBE M8X30 SELBSTSICH	6	TILL 6.2005	NYLOC SOCKE M8X30
10A	323-734	Sechskantschraube M8x40	6	SINCE 7.2005	NYLOC SOCKE M8X40
11	998-427	O-RING (B) H65SB/SD/H70SA	1		O-RING
12	998-419	O-RING (E) H65SB/SD/H70SA	1	TILL 6.2005	O-RING
12A	323-731	O-Ring H65SB2	2	SINCE 7.2005	O-RING
13	998-433	DAMPFER (A) H65SB/SD/H70SA	1		DAMP.
14	998-418	SCHAFTBUCHSE H65SB/SD/H70SA	1	TILL 6.2005	SHANI
14A	323-730	Buchse H65SB2	1	SINCE 7.2005	SHANI

15	956-963	RING H65SB/SD/H70SA	1		MOUT
16	956-962	RINGABDECKUNG H65SB/SD/H70SA	1		MOUT
17	956-961	U-SCHEIBE H65SB/SD/H70SA	1		MOUT
18	956-960	URETHANRING H65SB/SD/H70SA	1		URETH
19	319-359	ZYLINDERGEHAUSE H70SA	1		CYLIN
20	956-996	O-RING (1AS-60) DIV TYPEN	1		O-RING
21	956-958	ANSCHLAGER H65SB/SD/H70SA	1	TILL 6.2005	STRIK
21A	323-724	Anschlager H65SB2	1		STRIK
22	306-163	INBUSSCHRAUBE M8X35 SELBSTSICH	4		NYLOC SOCKE M8X35
23	949-433	UNTERLEGSCHIEBE M8 (10ST)	4		BOLT (10 PCS)
24	998-414	O-RING (A) H65SB/SD/H70SA	1		O-RING
25	998-415	OLDICHTUNG (A) H65SB/SD/H70SA	1		OIL SE
26	998-413	KOLBEN H65SB/SD/H70SA	1		PISTON
27	944-928	KOLBENSTIFT H65SB/SD/H70SA	1		PISTON
28	998-434	PLEUEL KOMPLETT H65SB/SD/H70SA	1	INCLUD.29	CONN ASS'Y
29	944-921	NADELLAGER(NTN8E- NK18/20RDO)	1		NEEDI (NTN 8 RDO)
30	956-955	U-SCHEIBE KURBELWELLE H65SB/SD H70SA	1		CRANI
31	996-364	INBUSSCHRAUBE M8X16 SELBSTSICH	3		SEAL I SOCKE M8X16
32			1		NAME
33	319-360	GETRIEBEGEHAUSE H70SA	1		GEAR
34	630-2VV	KUGELLAGER 6302VV	1		BALL 6302VV
35	944-916	ZAHNRAD H65SB/SD/H70SA	1		FINAL

36	944-915	ABSTANDSCHEIBE (B) H65SB/SD/H70SA	1		DISTA
37	998-412	INNENDECKEL H65SB/SD/H70SA	1		INNER
38	957-143	DICHTUNGSRING (A) H65SB/SD/H70SA	1		SEAL I
39	620-5DD	KUGELLAGER 6205 DD	1		BALL I 6205DI
40	956-949	LAGERDECKEL H65SB/SD/H70SA	1		BEARI
41	990-079	INBUSSCHRAUBE M5X16 SELBSTSICH	7		SEAL I SOCKE M5X16
42	998-430	KURBELWELLE H65SB/SD/H70SA	1		CRANI
43	956-850	HALBMONDKEIL 4X16 H65SB/SD/H70SA	2		WOOD 4X16
44	318-655	DAMPFER (B) H90SE/H70SA	4		DAMP
45	944-918	ROLLSTIFT D5X15 8 H65SB/SD/H70SA	2		PIN D5
46	993-496	INBUSSCHRAUBE M6X30 SELBSTSICH	8		SEAL I SOCKE M6X30
47	305-633	SEITENGRIFF H90SC/SE/H70SA	1		SIDE H
48	319-365	HANDGRIFFHALTER H70SA	2		HAND
49	319-364	HANDGRIFFDAMPFER (B) H70SA	2		HAND (B)
50	310-124	HANDGRIFFDAMPFER H41SA/H45MA u a H70SA/	4		HAND
51	956-969	DICHTUNG H70SA	1		HOLDI
52	998-416	HALTER H70SA	1		HOLDI
53	987-203	#NAME?	4		SEAL I (W/SP. M4X12
54	998-417	ABDECKPLATTE H70SA	1		COVEI
55	991-690	INBUSSCHRAUBE M5X12 SELBSTSICH	6		SEAL I SOCKE M5X12
56	983-162	INBUSSCHRAUBE M4X12 SELBSTS	4		SEAL I SOCKE M4X12

57	956-972	KAPPENDECKEL H65SB/SD/H70SA	2		CAP C
58	944-960	KAPPENGUMMI H65SB/SD/H70SA	2		CAP R
59	940-540	KOHLLENKAPPE C13U/M12V/DIV TYPEN H70SA	2		BRUSH
60	999-086	Abschaltkohlebursten (Paar)	2		CARBO (AUTO (1 PAIR
61	956-984	KOHLLENHALTER H60MA/MB/H65SB/SD H70SA	2		BRUSH
62	986-940	INBUSSCHRAUBE M6X45 SELBSTSICH	6		SEAL I SOCKE M6X45
63	620-1VV	KUGELLAGER 6201 VV	1		BALL I 6201VV
64	956-948	GEGENZAHRAD H65SB/SD/H70SA	1		COUN
65	600-1VV	KUGELLAGER 6001 VV	1		BALL I 6001VV
66	944-911	LAGERDECKEL (A) H65SB/SD/H70SA	1		BEARI (A)
67	620-3DD	KUGELLAGER 6203 DD	1		BALL I 6203DI
68	944-907	DISTANZRING (A) H65SB/SD/H70SA	1		DISTA (A)
69	500-390Z		1	(CORD ARMOR D10.7)	CORD
69	500-408Z		1	"(CORD ARMOR D8.2) FOR AUS,NZL"	CORD
69	500-466Z		1	(CORD ARMOR D10.7) FOR GBR (110V)	CORD
69	500-450Z		1	(CORD ARMOR D10.7) FOR GBR (230V)	CORD
69	500-458Z		1	(CORD ARMOR D10.7) FOR SAF	CORD
69	500-391Z		1	(CORD ARMOR D10.7) FOR SUI	CORD
69	500-206Z		1	(CORD ARMOR D10.7) FOR VEN	CORD
70	992-870	STIFT H90SC/SE/H70SA	1		PIN
71	992-869	SCHALTERHEBEL H90SC/SE/H70SA	1		SWITC
					RETAI

72	968-643	SICHERUNGSRING D4 (E-TYPE)	1		(E-TYPE) SHAFT
73	305-636	HANDGRIFF (A) H90SC/SE/H70SA	1		HAND.
74	958-049	KABELKNICKSCHUTZ D8 2 DIV TYPEN	1		CORD
74	940-778	KABELKNICKSCHUTZ D10 7 DIV TYPEN	1		CORD D10.7
75	960-266	KABELKLEMME DIV TYPEN	1		CORD
75	981-987Z		1	FOR SUI	CORD
76	982-095	SCHNEIDSCHRAUBE D4X20 M U-SCHEIBE	2		TAPPI (W/WA D4X20
77	980-063	KABELSCHUH C7U/CJ65V2/H70SA/G13V G13YD/G	1	FOR CORD	TERMI
77	930-804	KABELSCHUH M4 0 (10ST)	1	(FOR CORD) FOR VEN	TERMI PCS.)
78	959-141	VERBINDER 50092 (10ST) DIV TYPEN	2	EXCEPT FOR FIN	CONNI (10 PC)
79	959-140	VERBINDER 50091 (10ST) DIV TYPEN	1	EXCEPT FOR FIN	CONNI (10 PC)
80			2		VINYL (1.07X)
81	960-251	SCHNEIDSCHRAUBE D5X65 (DIV TYPEN)	2		HEX. F SCREW
82	956-764	SPEZIALSCHEIBE H65SB/SD/H70SA u a	2		SPECL
83	340-488C		1	INCLUD.84	STATC 110V
83	340-488E	STATOR KOMPLETT 230V H70SA	1	INCLUD.84	STATC 230V
83	340-488F		1	INCLUD.84	STATC 240V
84	945-932	KOHLLENHALTERKLEMME H60MA/MB u a H70SA	2		BRUSH
85	944-954	LAGERSCHEIBE F30A/H65SB/SD u a H70SA	1		BEARI
86	620-1DD	KUGELLAGER 6201 DD	1		BALL 6201DI
87	996-370	LUFTERFLUGEL H60MA/MB/H65SB u a H70SA	1		FAN
88	360-286C		1	INCLUD.87	ARMA 110V-1

88	360-286E	ANKER 220V-230V H65SB/SD/H70SA	1	INCLUD.87	ARMA 220V-2
88	360-286F		1	INCLUD.87	ARMA 240V
89	306-098	LUFTFUHRUNG H65SB/SD/H70SA	1		FAN G
90	986-277	VERBINDERKABEL DH20V/DH25V u a H70SA	1		INTER
91	319-363	KUNSTSTOFFSCHLAUCH H70SA	1		VINYL
92	319-366	HANDGRIFFSTIFT H70SA	2		HAND.
93	930-153	POLSTER (B) SELBSTKLEB DIV TYPEN	1		SUPPO
94	958-308Z	SCHRAUBKLEMME 2- REIHIG DIV TYPEN	1	FOR FIN	PILLA (A)
95	938-307	SCHRAUBKLEMME 1- REIHIG DIV TYPEN	1	EXCEPT FOR NZL.SAF	PILLA
96	994-273	KONDENSATOR DIV TYPEN	1		NOISE SUPPR
97	981-974	VERBINDERKABEL DH28Y/H41SA/H45MR H60MA/M	1		INTER
97	306-681		1	"FOR GBR,VEN"	INTER
98	990-082		1		SUPPO
99	992-891	SCHALTER DIV BOHR- MEISSELHAMMER	1		SWITC SCREV LOCK
100	949-423	UNTERLEGSCHLEIBE M4 (10ST)	1	EXCEPT FOR NZL	WASH PCS.)
101	319-367	UNTERLEGSCHLEIBE H70SA	2		WASH
102	305-631	HANDGRIFF (B) H90SC/SE/H70SA	1		HAND.
103	301-653	SCHNEIDSCHRAUBE D4X20 MIT FLANSCH (SCHWA	2		TAPPI (W/FL (BLAC
104	319-361	GEHAUSE KOMPLETT H70SA	1	"INCLUD.61,105"	HOUSI
105	938-477	INBUSSTIFTSCHRAUBE M5X8	2		HEX. S SCREV
106	319-362		1		MESH
107	306-099	GEHAUSEABDECKUNG H65SB/SD/H70SA	1		TAIL C

108	323-736	Dampferplatte H65SB2	1	SINCE 7.2005	DAMP
109	323-737	Buchse H65SB2	6	SINCE 7.2005	COLLA
110	323-735	Frontdampfer H65SB2	2	SINCE 7.2005	FRONT
501	944-961	SPITZMEISSEL 410MM 30MM 6-KANT Neue Art	1		BULL I 410MM
502	943-277	INBUSSCHLUSSEL D3(M4)	1		HEX. E 3MM
503	872-422	INBUSSCHLUSSEL D6(M8)	1		HEX. E 6MM
601	944-962	FLACHMEISSEL 25X410 30MM 6-KANT Neue Art	1		COLD 410MM SHANI
602	944-964	SPATMEISSEL 75X410 30MM 6-KANT Neue Art	1		CUTTE (ROUN TYPE)
603	944-966	AUFNAHMES F STAMPFER-U STOCKERPL L= 250	1		RAMM (HAMM
604	944-965	RAMMPLATTE ø200MM H65SB/H70SA	1		RAMM
605	319-298		1		SCOOP (ROUN TYPE)
606	306-441	REPARATUR-SATZ H65SB/H70SA	1	"INCLUD.9,10,11,12,18,20,24,25,38,"	SERVI 65SB)
606	306-441	REPARATUR-SATZ H65SB/H70SA	1	"INCLUD.60,607,609 TILL 6.2005"	SERVI 65SB)
606A	324-728		1	"INCLUD.9,10A,11,12A,18,20,24,25,"	SERVI 70SA)
606A	324-728		1	"INCLUD.38,60,607,609 SINCE 7.2005"	SERVI 70SA)
607	981-840	HAMMERFETT (A) 30G	1		GREAS HAMM DRILL
608	308-471	HAMMERFETT 70G TUBE	1		GREAS HAMM DRILL
609	930-035	FETT (SEP-3A) 100G	1		GREAS (100G)
610	980-927	HAMMERFETT 500G	1		GREAS HAMM DRILL