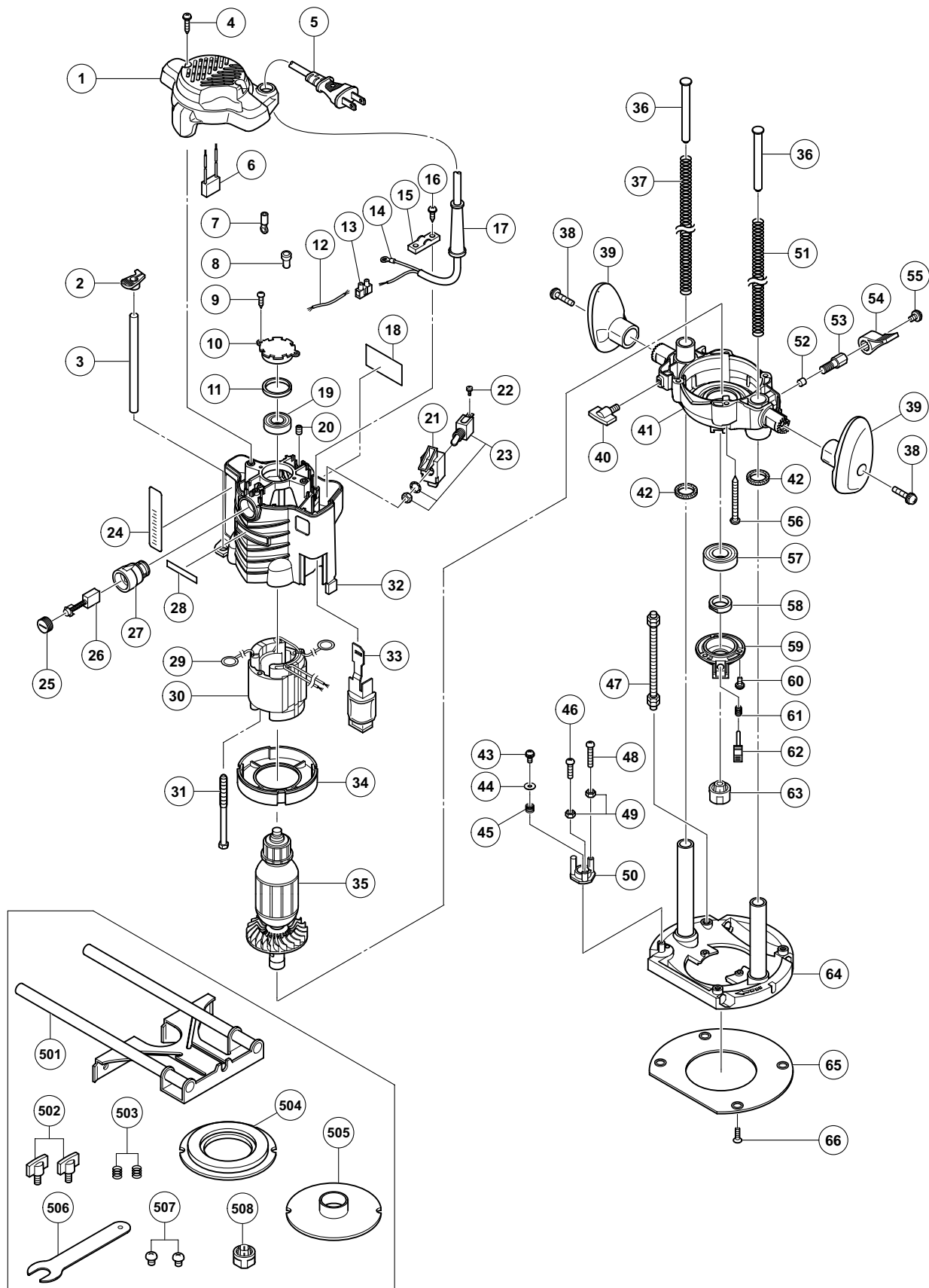


ELECTRIC TOOL PARTS LIST

ROUTER

2009·10·21

Model M 12SE**(E1)**

PARTS

M 12SE

ITEM NO.	CODE NO.	DESCRIPTION	NO. USED	REMARKS
1	331-829	TOP COVER	1	
2	331-823	MARKER	1	
3	325-196	STOPPER POLE (A)	1	
4	301-653	TAPPING SCREW (W/FLANGE) D4 X 20 (BLACK)	2	
*	5	500-234Z	1	(CORD ARMOR D8.8)
*	5	500-247Z	1	(CORD ARMOR D8.8) FOR AUT, FIN, DEN, SWE, NOR
*	5	500-463Z	1	(CORD ARMOR D8.8) FOR GBR (110V)
*	5	500-435Z	1	(CORD ARMOR D8.8) FOR GBR (230V)
*	5	500-248Z	1	(CORD ARMOR D8.8) FOR SUI
*	5	500-242Z	1	(CORD ARMOR D10.1) FOR MEX, PAN
*	5	500-237Z	1	(CORD ARMOR D8.8) FOR BRA
*	5	500-439Z	1	(CORD ARMOR D8.8) FOR AUS, NZL
*	5	500-455Z	1	(CORD ARMOR D8.8) FOR CHN, THA, PHI
*	5	500-423Z	1	(CORD ARMOR D8.8) FOR SIN, MAL
*	5	500-234Z	1	(CORD ARMOR D8.8) FOR KOR
*	5	500-474Z	1	(CORD ARMOR D10.1) FOR TPE
*	6	930-039	1	FOR EUROPE, AUT, GBR, FIN, DEN, SWE, NOR, SUI, AUS, NZL, ISR, CHN, SAF
*	7	930-804	1	FOR CORD
	8	959-141	1	
	9	954-017	2	
	10	325-226	1	
	11	325-184	1	
*	12	331-989	1	
*	12	331-979	1	FOR MEX, PAN (120V)
	13	938-307	1	
	14	980-063	1	
	15	937-631	1	
	16	984-750	2	
*	17	953-327	1	
*	17	938-051	1	
	18		1	NAME PLATE
	19	620-0VV	1	BALL BEARING 6200VVCMP2L
	20	938-477	2	HEX. SOCKET SET SCREW M5 X 8
	21	331-813	1	SWITCH HOLDER
	22	307-887	2	MACHINE SCREW (W/WASHER) M3.5 X 6
*	23	331-812	1	SWITCH (1P SCREW TYPE)
*	23	331-986	1	FOR GBR (110V), MEX, PAN (120V)
*	24	331-820	1	SCALE
*	24	331-821	1	FOR GBR, BRL, PAN, MEX, AUS, NZL, SAF, MAL, VIE, INA
	25	945-161	2	BRUSH CAP
	26	999-038	2	CARBON BRUSH (1 PAIR)
	27	938-241	2	BRUSH HOLDER
	28		1	HITACHI LABEL
	29	937-623	2	BRUSH TERMINAL
*	30	340-668D	1	INCLUD. 30
*	30	340-668L	1	INCLUD. 30
*	30	340-668J	1	INCLUD. 30 FOR BRA, PAN (220V), ISR, UAE, IND, INA, KOR, SIN, THA, PHI

PARTS

M 12SE

ITEM NO.	CODE NO.	DESCRIPTION	NO. USED	REMARKS
* 30	340-668M	STATOR ASS'Y 240V	1	INCLUD. 30
* 30	340-668K	STATOR ASS'Y 240V	1	INCLUD. 30 FOR MAL
31	961-400	HEX. HD. TAPPING SCREW D5 X 70	2	
32	331-814	HOUSING ASS'Y	1	INCLUD. 20, 27
33	325-960	LEVER	1	
34	331-980	FAN GUIDE	1	
* 35	360-886U	ARMATURE ASS'Y 110V-120V	1	INCLUD. 18, 56
* 35	360-888E	ARMATURE 220V-230V	1	
* 35	360-888F	ARMATURE 240V	1	
36	325-180	SPRING GUIDE	2	
37	303-316	SPRING	1	
38	307-443	MACHINE SCREW (W/WASHERS) M6 X 30 (BLACK)	2	
39	331-819	HANDLE (A). (B) SET	2	
40	301-806	WING BOLT M6 X 15	1	
41	331-817	END BRACKET	1	
42	323-426	FELT	2	
43	317-200	MACHINE SCREW (W/WASHERS) M4 X 8 (BLACK)	1	
44	962-569	WASHER (B)	1	
45	971-858	SPRING (A)	1	
46	302-196	MACHINE SCREW M5 X 20 (BLACK)	1	
47	331-824	SCREW M8	1	
48	302-197	MACHINE SCREW M5 X 35 (BLACK)	1	
49	302-012	NUT M5 (BLACK)	2	
50	331-826	STOPPER BLOCK	1	
51	303-317	SPRING	1	
52	971-848	LOCK PIECE	1	
53	325-187	LOCK SCREW M10	1	
54	323-923	LEVER (A)	1	
55	997-314	MACHINE SCREW (W/WASHERS) M6 X 10	1	
56	307-100	TAPPING SCREW D5 X 50	4	
57	600-4VV	BALL BEARING 6004VVCMP52L	1	
58	325-186	THRUST NUT	1	
59	325-185	BEARING COVER	1	
60	935-196	MACHINE SCREW (W/WASHERS) M4 X 12 (BLACK)	3	
61	325-183	LOCK SPRING (A)	1	
62	325-182	PUSHING BUTTON	1	
* 63	325-199	COLLET CHUCK 12MM	1	
* 63	323-421	COLLET CHUCK 1/2"	1	FOR GBR, BRA, MEX, PAN, AUS, NZL, SAF, INA, MAL, THA
64	331-818	BASE	1	
65	301-810	SUB BASE	1	
66	992-013	SEAL LOCK FLAT HD. SCREW M5 X 14	4	

STANDARD ACCESSORIES

M 12SE

ITEM NO.	CODE NO.	DESCRIPTION	NO. USED	REMARKS
501	331-816	PARALLEL GUIDE	1	
502	301-806	WING BOLT M6 X 15	2	
503	947-859	LOCK SPRING	2	
* 504	956-756	TEMPLATE GUIDE ADAPTER	1	FOR BRA, MEX, PAN
505	956-790	TEMPLATE GUIDE D18	1	
506	323-295	WRENCH 23MM	1	
507	949-234	MACHINE SCREW M5 X 6 (10 PCS.)	2	
* 508	325-199	COLLET CHUCK 12MM	1	FOR GBR, MEX

OPTIONAL ACCESSORIES

ITEM NO.	CODE NO.	DESCRIPTION	NO. USED	REMARKS
* 601	307-801	COLLET CHUCK 1/2"	1	EXCEPT FOR GBR, BRA, PAN, MEX, AUS, NZL, VIE, SAF, MAL, THA
* 602	323-293	COLLET CHUCK 1/4"	1	EXCEPT FOR GBR, BRA, PAN, MEX, AUS, NZL, VIE, SAF, MAL, THA
603	997-466	DUST COLLECTION ADAPTER SET	1	
604	956-794	TRIMMER GUIDE	1	
605	331-815	CASE	1	