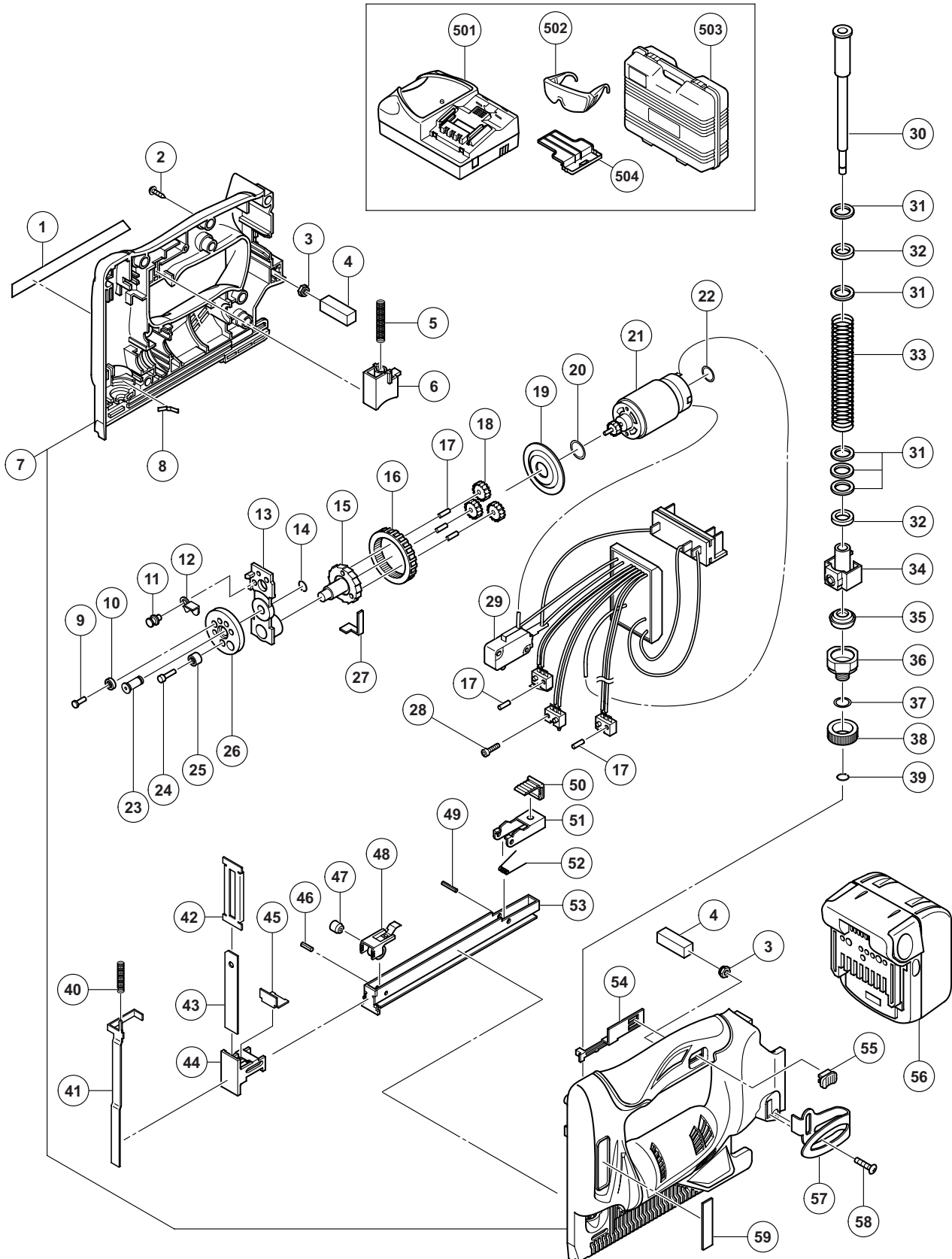


ELECTRIC TOOL PARTS LIST

CORDLESS STAPLER Model N 14DSL

2012-9-24
(E1)



PARTS

N 14DSL

| ITEM NO. | CODE NO. | DESCRIPTION | NO USED | REMARKS |
|----------|----------|--|---------|---------|
| 1 | | NAME PLATE | 1 | |
| 2 | 313-687 | TAPPING SCREW (W/FLANGE) D3 X 16 (BLACK) | 10 | |
| 3 | 327-002 | LOCK NUT M4 (BLACK) | 2 | |
| 4 | 331-186 | PACKING | 2 | |
| 5 | 332-000 | SPRING (T) | 1 | |
| 6 | 331-789 | TRIGGER | 1 | |
| 7 | 334-983 | HOUSING (A).(B) SET | 1 | |
| 8 | 331-782 | ADJUSTER PLATE | 1 | |
| 9 | 331-793 | PIN (B) | 1 | |
| 10 | 331-791 | CAM ROLLER | 1 | |
| 11 | 331-799 | LEVER PIN | 1 | |
| 12 | 331-798 | SWITCH LEVER | 1 | |
| 13 | 331-797 | GEAR HOLDER | 1 | |
| 14 | 331-993 | RETAINING RING D5.4 | 1 | |
| 15 | 331-800 | SECOND PINION | 1 | |
| 16 | 331-804 | RING GEAR | 1 | |
| 17 | 331-991 | NEEDLE ROLLER | 5 | |
| 18 | 331-803 | IDLE GEAR | 3 | |
| 19 | 331-802 | WASHER | 1 | |
| 20 | 996-407 | O-RING (1AP-12) | 1 | |
| 21 | 331-806 | MOTOR | 1 | |
| 22 | 872-654 | O-RING (1AP-10) | 1 | |
| 23 | 331-796 | PIN (A) | 1 | |
| 24 | 331-794 | PIN (B) | 1 | |
| 25 | 331-792 | CAM ROLLER | 1 | |
| 26 | 331-795 | FINAL GEAR | 1 | |
| 27 | 331-801 | CLUTCH (D) | 1 | |
| 28 | 331-992 | NYLOCK HEX. SOCKET HD. BOLT M3 X 8 | 1 | |
| 29 | 335-024 | SWITCH | 1 | |
| 30 | 331-785 | GUIDE BAR | 1 | |
| 31 | 331-995 | SPRING WASHER D11.2 | 5 | |
| 32 | 331-787 | SPRING BUMPER | 2 | |
| 33 | 332-002 | MAIN SPRING | 1 | |
| 34 | 331-788 | PLUNGER | 1 | |
| 35 | 331-784 | BUMPER | 1 | |
| 36 | 331-783 | BUMPER HOLDER | 1 | |
| 37 | 987-105 | O-RING (S-10) | 1 | |
| 38 | 331-781 | ADJUSTER | 1 | |
| 39 | 331-994 | RETAINING RING D4.4 | 1 | |
| 40 | 331-996 | SPRING (P) | 1 | |
| 41 | 331-773 | PUSHING LEVER | 1 | |
| 42 | 331-774 | COVER PLATE | 1 | |
| 43 | 331-776 | DRIVER BLADE | 1 | |
| 44 | 334-995 | BLADE GUIDE (A) | 1 | |
| 45 | 333-942 | BLADE GUIDE (B) | 1 | |
| 46 | 949-551 | ROLL PIN D2.5 X 10 (10 PCS.) | 1 | |
| 47 | 331-778 | SPRING COIL | 1 | |
| 48 | 331-997 | FEEDER | 1 | |
| 49 | 949-900 | ROLL PIN D3 X 14 (10 PCS.) | 1 | |
| 50 | 331-999 | STOPPER COVER | 1 | |

