

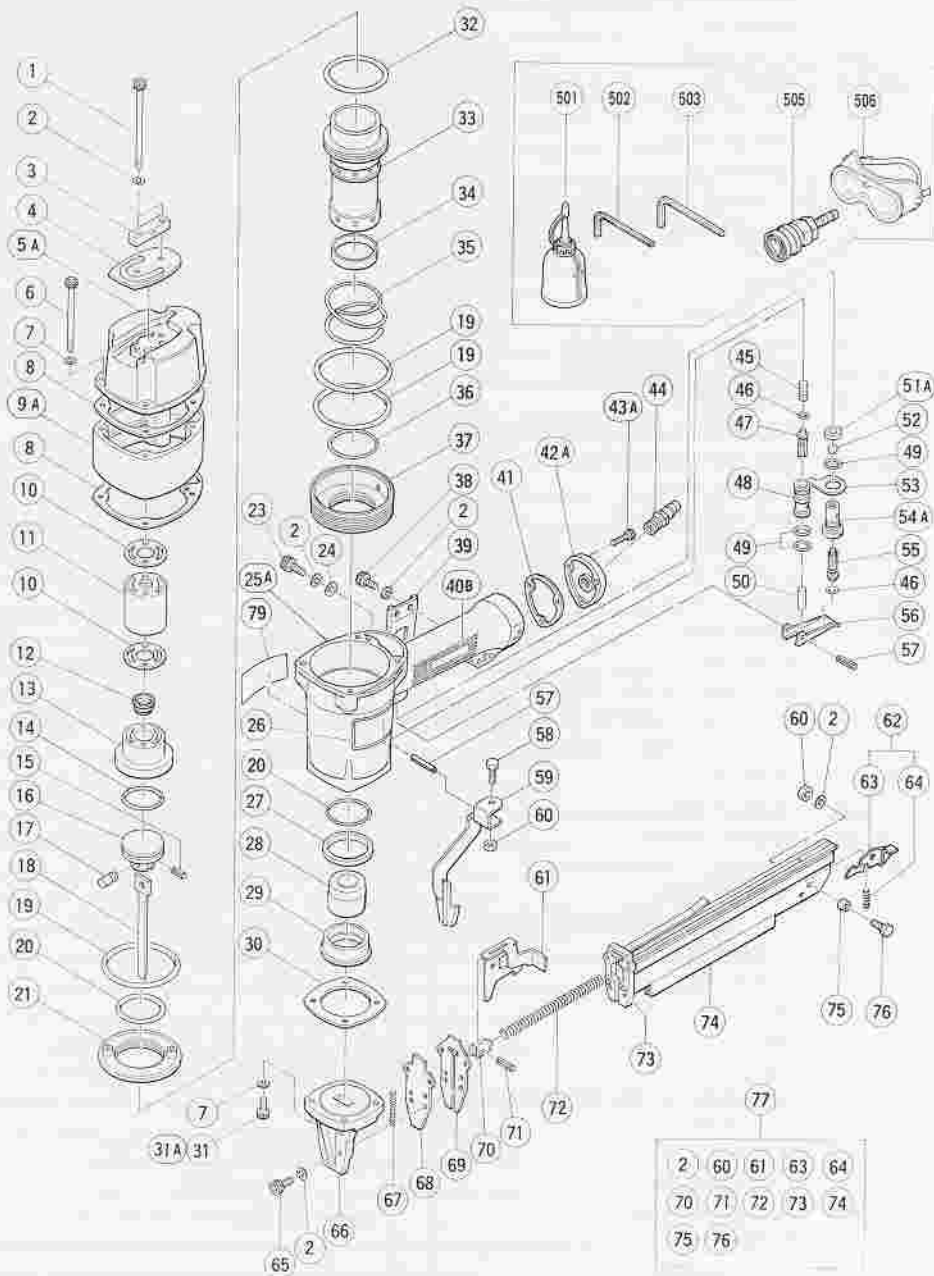
# HITACHI

LIST NO. 1066

## PNEUMATIC TOOL PARTS LIST

■ T - NAILER  
Model NT 65AB

1997 · 1 · 30  
(E3)



## PARTS

NT 65AB

ITEM NO.	CODE NO.	DESCRIPTION	NO. USED	REMARKS
1	876-607	HEX. SOCKET HD. BOLT M5X80	2	
2	949-454	SPRING WASHER M5 (10 PCS.)	10	
3	876-618	HANGER	1	
4	876-444	TOP COVER	1	
5A	876-440	EXHAUST COVER (C)	1	
6	876-605	HEX. SOCKET HD. BOLT M6X70	4	
7	949-455	SPRING WASHER M6 (10 PCS.)	8	
8	876-441	GASKET (B)	2	
8A	880-250	UPPER COVER	1	
10	876-749	GASKET (G)	2	
11	876-606	EXHAUST PIECE	1	
12	878-417	EXHAUST VALVE	1	
13	876-442	HEAD CAP (C)	1	
14	931-835	O - RING (P - 36)	1	
15	949-861	ROLL PIN D2X12 (10 PCS.)	1	
16	876-602	PISTON	1	
17	875-613	BIT PIN	1	
18	876-603	DRIVER BLADE	1	
19	874-104	CYLINDER O - RING (I.D 68.3)	3	
20	875-602	CYLINDER O - RING (I.D 50.9)	2	
21	876-435	CYLINDER PLATE	1	
23	877-839	SEAL LOCK HEX. SOCKET HD. BOLT M5X10	1	
24	949-431	BOLT WASHER M5 (10 PCS.)	2	
25A	876-472	BODY CAP ASS'Y	1	INCLUD.41.42A
25A	880-252	BODY CAP ASS'Y	1	INCLUD.41.42A FOR USA,EUROPE
26		NAME PLATE	1	
27	876-733	CYLINDER BUMPER	1	
28	876-601	PISTON BUMPER	1	
29	876-600	BUMPER RING	1	
30	876-449	GASKET (A)	1	
31	949-687	HEX. SOCKET HD. BOLT M6X28 (10 PCS.)	4	
31A	880-251	NYLOCK HEX. SOCKET HD. BOLT M6X25	4	FOR USA,EUROPE
32	877-312	CYLINDER O - RING (I.D 63.1)	1	
33	876-732	CYLINDER	1	
34	876-434	CYLINDER RING	1	
35	875-605	CYLINDER SPRING	1	
36	876-433	CYLINDER O - RING (B) I.D 55.9	1	
37	876-731	CYLINDER GUIDE	1	
38	949-820	HEX. SOCKET HD. BOLT M5X15 (10 PCS.)	2	
39	876-616	HANDLE ARM	1	
40B	878-312	HITACHI LABEL	1	
41	877-331	GASKET (D)	1	
42A	878-878	CAP	1	
42A	878-311	CAP	1	FOR USA,EUROPE
43A	949-858	HEX. SOCKET HD. BOLT M5X18 (10 PCS.)	3	
44	874-782	AIR PLUG PT 1/4	1	
44	872-035	DUST CAP	1	FOR USA,EUROPE
45	875-643	PLUNGER SPRING	1	
46	874-820	PLUNGER O - RING	2	
47	878-122	PLUNGER (A)	1	
48	878-266	VALVE BUSHING	1	

\* : ALTERNATIVE PARTS



