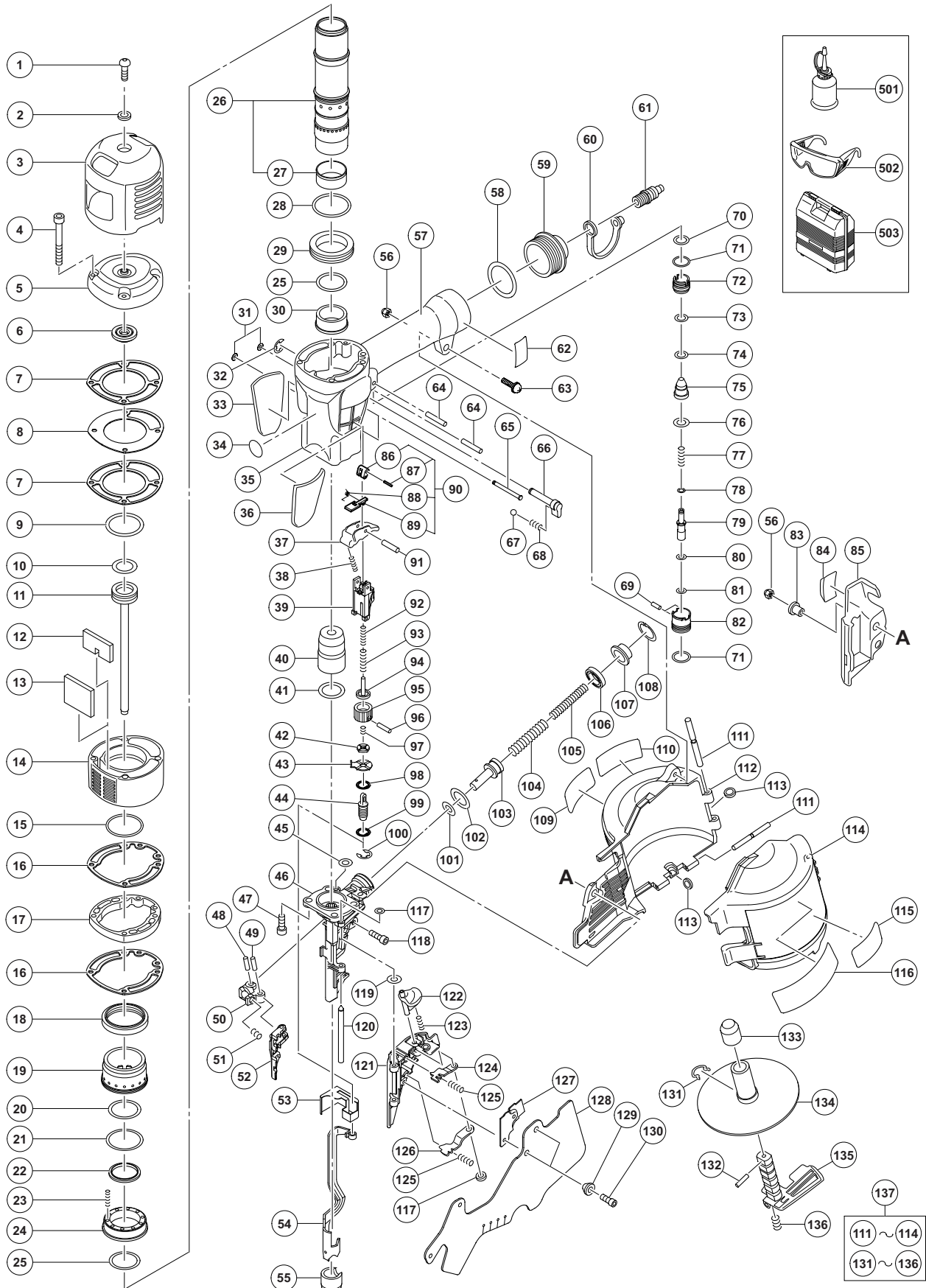


PNEUMATIC TOOL PARTS LIST

■ HIGH PRESSURE COIL NAILER Model NV 100H

2012-5-21
(E1)



PARTS

NV 100H

ITEM NO.	CODE NO.	DESCRIPTION	NO. USED	REMARKS
1	880-324	HEX. SOCKET HD. BOLT (W/BUTTON) M5 X 10	1	
2	876-205	WASHER	1	
3	885-190	HEAD GUARD (A)	1	
4	885-189	NYLOCK HEX. SOCKET HD. BOLT M5 X 80	4	
5	886-632	UPPER COVER (GOLD)	1	
6	883-423	HEAD BUMPER	1	
7	883-130	GASKET (B)	2	
8	883-132	PLATE	1	
9	883-401	O-RING (I.D 45.5)	1	
10	885-253	PISTON O-RING	1	
11	885-179	PISTON (H)	1	
12	883-128	MUFFLER (B)	1	
13	883-127	MUFFLER (A)	1	
14	886-631	EXHAUST COVER (GOLD)	1	
15	980-715	O-RING (S-48)	1	
16	885-188	GASKET (C)	2	
17	886-633	SPACER (GOLD)	1	
18	883-121	SLEEVE VALVE RUBBER	1	
19	885-259	SLEEVE VALVE	1	
20	885-261	O-RING (I.D 35.5)	1	
21	885-260	O-RING (I.D 41.5)	1	
22	883-120	EXHAUST RUBBER	1	
23	883-123	SLEEVE VALVE SPRING	10	
24	883-122	VALVE PLATE	1	
25	880-865	O-RING (I.D 29.7)	2	
26	885-367	CYLINDER ASS'Y	1	INCLUD. 27
27	885-258	CYLINDER SLEEVE	1	
28	883-418	O-RING (I.D 45.5)	1	
29	883-117	CYLINDER PLATE	1	
30	881-244	CYLINDER RING	1	
31	878-888	O-RING (I.D. 1.8)	2	
32	968-643	RETAINING RING (E-TYPE) FOR D4 SHAFT	1	
33		HITACHI LABEL (D)	1	
34	883-513	WARNING LABEL (A)	1	
35	887-973	BODY ASS'Y	1	INCLUD. 57
36		HITACHI LABEL (C)	1	
37	886-623	TRIGGER	1	
38	883-759	TRIGGER SPRING	1	
39	885-255	PUSHING LEVER GUIDE	1	
40	885-254	PISTON BUMPER	1	
41	980-879	O-RING (S-34)	1	
42	884-973	ADJUSTER PLATE (C)	1	
43	882-886	ADJUSTER PLATE (A)	1	
44	882-888	PUSHING LEVER (B)	1	
45	873-093	O-RING (1AP-3)	1	
46	885-180	NOSE	1	
47	993-040	NYLOCK HIGH TENSION BOLT M7 X 25	4	
48	949-497	ROLL PIN D4 X 16 (10 PCS.)	1	
49	998-426	NEEDLE ROLLER	1	
50	883-144	FEEDER ARM (B)	1	

PARTS

NV 100H

ITEM NO.	CODE NO.	DESCRIPTION	NO. USED	REMARKS
51	883-143	FEEDER SPRING	1	
52	885-185	FEEDER	1	
53	883-113	PUSHING LEVER COVER (B)	1	
54	885-186	PUSHING LEVER (A)	1	
55	883-106	NOSE CAP (A)	1	
56	877-371	NYLON NUT M5	2	
57		GRIP RUBBER	1	SUPPLIED WITH ITEM NO. 601, 602
58	880-183	O-RING (I.D 37.2)	1	
59	886-426	CAP (GOLD)	1	
60	877-914	DUST CAP	1	
61	883-135	AIR PLUG L-PT 1/4	1	
62		CAUTION PLATE (C)	1	
63	880-734	MACHINE SCREW (W/WASHERS) M5 X 25 (BLACK)	1	
64	949-865	ROLL PIN D3 X 28 (10 PCS.)	2	
65	885-268	TRIGGER PIN	2	
66	885-865	LOCK KNOB (A)	1	
67	959-148	STEEL BALL D3.175 (10 PCS.)	1	
68	882-923	LOCK SPRING	1	
69	949-778	PIN D2 X 8 (10 PCS.)	2	
70	876-319	O-RING (S-14)	1	
71	876-031	O-RING (S-16)	2	
72	883-100	VALVE BUSHING (B)	1	
73	883-105	O-RING (P7-U)	1	
74	883-104	O-RING (P9-U)	1	
75	883-101	VALVE PISTON	1	
76	878-764	O-RING (1AP-11)	1	
77	883-103	PLUNGER SPRING	1	
78	883-405	O-RING (I.D 1.8)	1	
79	886-621	PLUNGER	1	
80	873-407	O-RING (1AP-5)	1	
81	997-218	O-RING (S-6)	1	
82	883-099	VALVE BUSHING (A)	1	
83	882-907	SLEEVE	1	
84	881-223	PROTECTOR (B)	1	
85	883-112	PUSHING LEVER COVER (A)	1	
86	886-626	TRIGGER PIECE (C)	1	
87	886-228	ROLL PIN D1.6 X 10	1	
88	886-627	TRIGGER SPRING	1	
89	886-625	TRIGGER ARM (C)	1	
90	886-624	TRIGGER ARM ASS'Y	1	INCLUD. 86-89
91	881-951	ROLL PIN D2.5 X 16	1	
92	884-399	PUSHING LEVER SPRING (D)	1	
93	884-398	PUSHING LEVER SPRING (C)	1	
94	882-891	PUSHING LEVER (C)	1	
95	882-889	ADJUSTER	1	
96	880-093	ROLL PIN D2 X 16	1	
97	882-890	ADJUSTER SPRING	1	
98	981-317	O-RING (S-4)	1	
99	872-822	O-RING (S-5)	1	
100	872-971	RETAINING RING (E-TYPE) FOR D3 SHAFT	1	

PARTS

NV 100H

ITEM NO.	CODE NO.	DESCRIPTION	NO. USED	REMARKS	
101	872-645	O-RING (P-9)	1		
102	877-763	FEED PISTON O-RING (I.D. 14)	1		
103	883-094	FEED PISTON	1		
104	883-095	FEED SPRING (A)	1		
105	883-096	FEED SPRING (B)	1		
106	883-097	BUMPER	1		
107	883-098	FEED PISTON COVER	1		
108	983-748	RETAINING RING FOR D24 HOLE	1		
109	887-175	WARNING LABEL	1		
110	887-174	WARNING LABEL	1		
111	883-111	PIN	2		
112	887-957	MAGAZINE	1		
113	877-826	FEEDER SHAFT RING	2		
114	885-194	MAGAZINE COVER	1		
115		NAME PLATE	1		
116		CAUTION PLATE (B)	1		
117	880-319	SHAFT RING	2		
118	949-757	HEX. SOCKET HD. BOLT M5 X 20 (10 PCS.)	1		
119	874-436	O-RING (P-4)	1		
120	883-091	NAIL GUIDE SHAFT	1		
121	885-181	NAIL GUIDE	1		
122	886-107	GUIDE LOCK	1		
123	880-446	SPRING	1		
124	885-182	NAIL STOPPER (A)	1		
125	883-087	STOPPER SPRING (B)	2		
126	883-086	NAIL STOPPER (B)	1		
127	885-183	NAIL GUIDE COVER	1		
128	885-184	COVER	1		
129	882-881	SLEEVE (B)	2		
130	880-630	NYLOCK HEX. SOCKET HD. BOLT M4 X 12	2		
131	880-398	RATCHET SPRING	1		
132	878-791	ROLL PIN D2.5 X 12	1		
133	881-003	HOLDER CAP (A)	1		
134	880-503	NAIL HOLDER	1		
135	883-324	HOLDER SHAFT	1		
136	881-826	SPRING	1		
137	887-974	MAGAZINE ASS'Y	1	INCLUD. 111-114, 131-136	

STANDARD ACCESSORIES

NV 100H

ITEM NO.	CODE NO.	DESCRIPTION	NO. USED	REMARKS
501	883-136	PNEUMATIC TOOL LUBRICANT (30 CC)	1	
502	875-769	SAFETY GLASSES	1	
503	880-517	CASE	1	

OPTIONAL ACCESSORIES

ITEM NO.	CODE NO.	DESCRIPTION	NO. USED	REMARKS
601	881-768	GRIP TAPE (A)	1	
602	880-407	TAPE	2	
603	876-212	PNEUMATIC TOOL LUBRICANT (1 L)	1	
604	887-978	HANGER PARTS SET	1	
605	887-952	SINGLE SEQUENTIAL ACTUATION MECHANISM KIT	1	

ITEM NO.	CODE NO.	DESCRIPTION	NO. USED	REMARKS	