

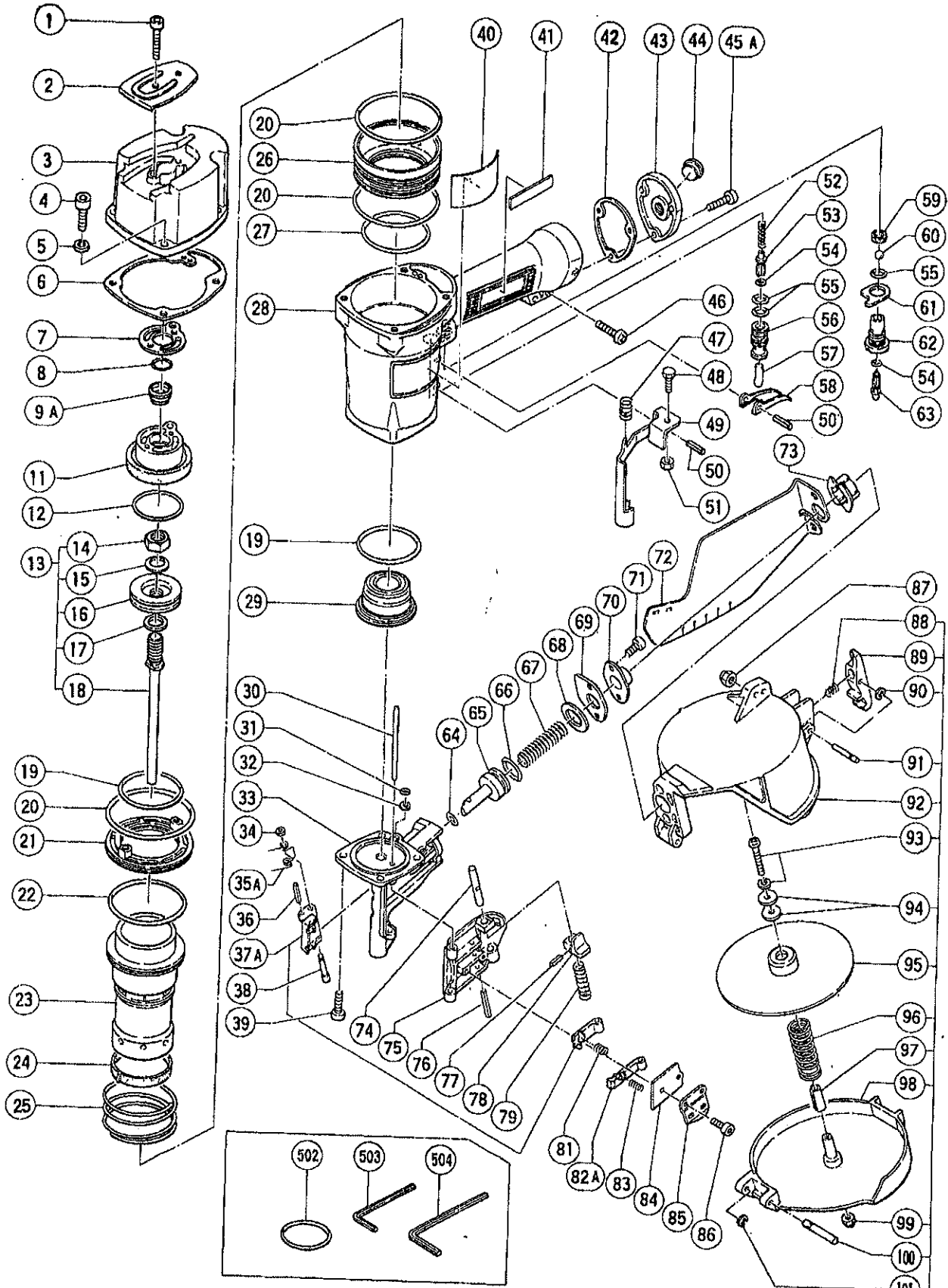
PNEUMATIC TOOL PARTS LIST

■ COIL NAILER

Model NV 65AB WIRE COLLATION

1992 · 6 · 30

(E4)



PARTS

NV 65AB

ITEM NO.	CODE NO.	DESCRIPTION	NO. USED	REMARKS
1	949-822	HEX. SOCKET HD. BOLT M5X35 (10 PCS.)	2	
2	876-444	TOP COVER	1	
3	876-748P	EXHAUST COVER (D)	1	
4	949-652	HEX. SOCKET HD. BOLT M8X25 (10 PCS.)	4	
5	949-455	SPRING WASHER M6 (10 PCS.)	4	
6	876-747P	PACKING (F)	1	
7	876-748	PACKING (G)	1	
8	872-821	VALVE O - RING	1	TILL 3.1988
9A	878-417	EXHAUST VALVE	1	
11	876-748P	HEAD CAP (D)	1	
12	931-835	O - RING (P - 38)	1	
13	878-267	PISTON ASS'Y	1	INCLUD.14 - 18
14	878-280	SMALL HEX. NUT M12	1	
15	878-271	BELLEVILLE SPRING WASHER	1	
16	878-268	PISTON	1	
17	878-272	WASHER	1	
18	878-269	DRIVE BIT	1	
19	875-602	CYLINDER O - RING (I.D 50.9MM)	2	
20	874-104	CYLINDER O - RING (I.D 68.3MM)	3	
21	876-435	CYLINDER PLATE	1	
22	877-312	CYLINDER O - RING (I.D 63.1MM)	1	
23	876-732	CYLINDER	1	
24	876-434	CYLINDER RING	1	
25	875-805	CYLINDER SPRING	1	
26	876-731	CYLINDER GUIDE	1	
27	876-433	CYLINDER O - RING B (I.D 55.9MM)	1	
28	878-285	BODY (D)	1	
29	878-260	PISTON DAMPER	1	
30	878-263	NAIL GUIDE SHAFT	1	
31	874-436	O - RING (P - 4)	1	
32	878-279	WASHER	1	
33	878-281	TAIL COVER	1	
34	877-826	FEEDER SHAFT RING	1	
35A	877-851	FEEDER SPRING	1	
36	949-496	ROLL PIN D3X16 (10 PCS.)	1	
37A	877-856	FEEDER SET	1	
38	877-825	FEEDER SHAFT	1	
39	949-680	HEX. SOCKET HD. BOLT M6X20 (10 PCS.)	4	
40		NAME PLATE	1	
41	950-565	HITACHI LABEL	1	
42	877-331	PACKING (D)	1	
43	877-367Z	CAP	1	
44	872-035	DUST CAP	1	
45A	949-658	HEX. SOCKET HD. BOLT M5X18 (10 PCS.)	3	
46	949-243	MACHINE SCREW M5X25 (10 PCS.)	1	
47	876-676	SAFETY SPRING	1	
48	875-650	SAFETY BOLT	1	
49	878-264	PUSHING LEVER	1	
50	949-866	ROLL PIN D3X30 (10 PCS.)	2	
51	949-555	NUT M5 (10 PCS.)	1	
52	875-643	PLUNGER SPRING	1	

*: ALTERNATIVE PARTS

PARTS

NV 65AB

ITEM NO.	CODE NO.	DESCRIPTION	NO. USED	REMARKS
53	878-122	PLUNGER (A)	1	
54	874-820	PLUNGER O - RING	2	
55	875-638	O - RING (S - 12)	3	
56	878-268	VALVE BUSHING	1	
57	875-642	SAFETY PLUNGER (B)	1	
58	876-203	TRIGGER	1	
59	875-637	VALVE PACKING	1	
60	875-645	URETHANE BALL (B) D7.14	1	
61	875-644	VALVE PLATE	1	
62	876-738	TRIGGER VALVE BUSHING	1	
63	878-121	TRIGGER PLUNGER	1	
64	872-645	O - RING (P - 9)	1	
65	877-709	FEED PISTON	1	
66	876-796	O - RING (P - 22)	1	
67	877-144	FEED SPRING	1	
68	877-711	DAMPER	1	
69	877-827	FEED PISTON COVER (A)	1	
70	877-713	FEED PISTON COVER	1	
71	877-839	SEAL LOCK HEX. SOCKET HD. BOLT M5X10	2	
72	878-262	COVER	1	
73	877-479	MAGAZINE BUSHING	1	
74	877-820	LOCK SHAFT	1	
75	877-834	NAIL GUIDE	1	
76	949-865	ROLL PIN D3X28 (10 PCS.)	1	
77	949-776	ROLL PIN D3X10 (10 PCS.)	1	
78	877-821	GUIDE LOCK	1	
79	877-372	SPRING	1	
81	876-661	MAIN STOPPER SPRING	1	
82A	877-819	SUB NAIL STOPPER	1	
83	877-468	SUB STOPPER SPRING	1	
84	877-469	NAIL GUIDE COVER	1	
85	877-471	COVER PLATE	1	
86	877-838	SEAL LOCK HEX. SOCKET HD. BOLT M4X8	2	
87	877-371	NYLON NUT M5	1	
88	877-149	STOPPER SPRING	1	
89	877-151	MAGAZINE STOPPER	1	
90	872-871	RETAINING RING (E - TYPE) FOR D3 SHAFT	1	
91	877-150	STOPPER PIN	1	
92	878-274	MAGAZINE	1	
93	986-120	MACHINE SCREW (W/SP. WASHER) M4X40	1	
94	875-249	THRUST WASHER	2	
95	878-275	NAIL HOLDER	1	
96	878-276	HOLDER SPRING	1	
97	878-278	SLEEVE	1	
98	878-277	MAGAZINE COVER	1	
99	876-465	NYLON NUT M4	1	
100	877-832	HINGE PIN	1	
101	968-643	RETAINING RING (E - TYPE) FOR D4 SHAFT	1	
102	878-273	MAGAZINE ASSY	1	INCLUD.88 - 101

