

Hitachi Power Tools

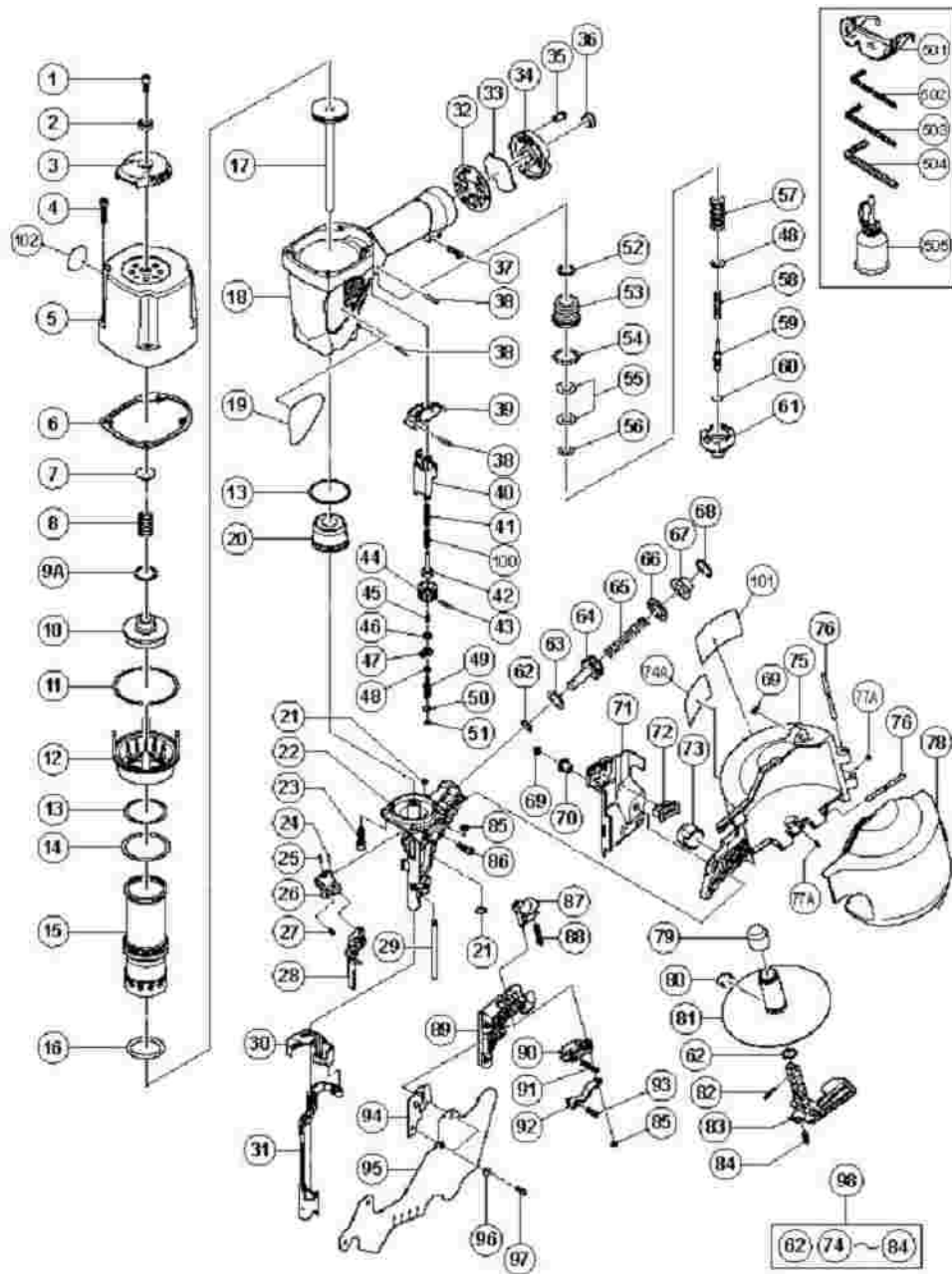
LIST NO: E006

ELECTRIC TOOL PARTS LIST

■ COIL NAILER
Model NV 75AG

2005 · 12 · 1

(E1-3)



NV75AG

Pos. Nr.	Art. Nr.	Beschreibung	Stueck	Kommentar	Beschreibung
1	949-657	INBUSSCHRAUBE M6X12 (10ST)	1		HEX. SOCKET HD. BOLT M6X12 (10 PCS.)
2	880-515	PLATTE NV65AD2	1		PLATE
3	880-514	OBERE ABDECKUNG NV65AD2	1		TOP COVER
4	949-822	INBUSSCHRAUBE M5X35 (10ST)	4		HEX. SOCKET HD. BOLT M5X35 (10 PCS.)
5	883-451		1		EXHAUST COVER
6	883-452		1		GASKET (B)
7	882-914		1		HEAD BUMPER
8	882-913		1		HEAD VALVE SPRING
9A	883-992		1		O-RING (I.D 20.8)
10A	882-927		1		HEAD VALVE (A)
11	878-863	O-RING (S-70) NR100A	1		O-RING (S-70)
12	882-910		1		CYLINDER PLATE
13	882-874		2		O-RING (S-46)
14	877-368	O-RING (1AP-48) NV83A/NR83A/AA	1		O-RING (1AP- 48)
15	883-989		1		CYLINDER
16	883-431		1		O-RING (I.D 37)
17	883-980		1		PISTON (H)
18	883-988		1		BODY
19			1		NAME PLATE
20	883-432		1		PISTON BUMPER
21	874-436	O-RING (P-4) CS35B/NR83A	2		O-RING (P-4)
22	883-981		1		NOSE
23	880-675		4		NYLOCK HIGH TENSION BOLT M6X20
24	883-093		1		PLUNGER (B)
					ROLL PIN

25	949-497		1		D4X16 (10 PCS.)
26	883-144		1		FEEDER ARM (B)
27	883-143		1		FEEDER SPRING
28	883-092		1		FEEDER
29	883-091		1		NAIL GUIDE SHAFT
30	882-900		1		PUSHING LEVER COVER (B)
31	883-852		1		PUSHING LEVER (A)
32	883-678		1		GASKET (B)
33	883-679		1		DUST FILTER
34	881-949		1		CAP
35	949-821	INBUSSCHRAUBE M5X16 (10ST)	3		HEX. SOCKET HD. BOLT M5X16 (10 PCS.)
36	872-035	STAUBSCHUTZKAPPE NV83A/u.a	1		DUST CAP
37	880-881	INBUSSCHRAUBE M5X30 M.U-SCHEIBE	1		MACHINE SCREW (W/WASHERS) M5X30 (BLACK)
38	949-865	ROLLSTIFT D3X28 (10ST)	3		ROLL PIN D3X28 (10 PCS.)
39	883-990		1		TRIGGER
40	882-885		1		PUSHING LEVER GUIDE
41	882-892		1		PUSHING LEVER SPRING
41	883-305		1	FOR EUROPE	PUSHING LEVER SPRING (A)
42	882-891		1		PUSHING LEVER (C)
43	880-093		1		ROLL PIN D2X16
44	883-982		1		ADJUSTER
45	882-890		1		ADJUSTER SPRING

46	882-887		1		ADJUSTER PLATE (B)
47	882-886		1		ADJUSTER PLATE (A)
48	981-317	O-RING (S-4) NV65AD2	2		O-RING (S-4)
49	882-888		1		PUSHING LEVER (B)
50	872-822	O-RING (S-5) NC65A	1		O-RING (S-5)
51	872-971	SICHERUNGSRING (E-TYP) D3	1		RETAINING RING (E-TYPE) FOR D3 SHAFT
52	877-699	HAUPTVENTIL O-RING (I.D.16.8.)	1		HEAD VALVE O-RING (I.D 16.8)
53	878-881	VENTILHÜLSE (B) NV65AD/AD2	1		VALVE BUSHING (B)
54	878-885	O-RING (S-18) CR17Y/NV65AD2	1		O-RING (S-18)
55	878-925	O-RING (I.D 8.8) NV65AD2/NV50AG	2		O-RING (I.D 8.8)
56	878-887	O-RING (I.D.11) NV65AD2/NV50AG	1		O-RING (I.D 11)
57	880-672	VENTILKOLBEN (B) NV65AD2	1		VALVE PISTON (B)
58	878-884	TAUCHKOLBENFEDER NV65AD2/NV50AG	1		PLUNGER SPRING
59	880-673	TAUCHKOLBEN (A) NV65AD2	1		PLUNGER (A)
60	878-888	O-RING (I.D.1.8) NV65AD2/NV50AG	1		O-RING (I.D 1.8)
61	880-671	VENTILHÜLSE (A) NV65AD2	1		VALVE BUSHING (A)
62	872-645	O-RING (1P-9) DH20V	2		O-RING (P-9)
63	880-330	O-RING (P-21) NV50AE	1		O-RING (P-21)
64	883-300		1		FEED PISTON
65	882-883		1		FEED SPRING
66	877-711	DÄMPFER NV83A	1		BUMPER
67	880-331	SCHIEBEKOLBENABDECKUNG NV50AG	1		FEED PISTON COVER
68	939-555	C-SICHERUNGSRING D28 (10STÜCK)	1		RETAINING RING FOR D28 HOLE (10 PCS.)
69	877-371	NYLONMUTTER M5 NV83A/NR83A	2		NYLON NUT M5
70	882-907		1		SLEEVE
					PUSHING

71	883-853		1	LEVER COVER (A)
72	882-901		1	PROTECTOR (B)
73	883-106		1	NOSE CAP (A)
74A	884-070		1	WARNING LABEL
75	883-984		1	MAGAZINE (A)
76	883-111		2	PIN
77A	877-826	SCHIEBEHÜLSENRING NV83A/NV45AB	2	FEEDER SHAFT RING
78	883-985		1	MAGAZINE COVER (A)
79	883-987		1	HOLDER CAP (A)
80	880-398	FEDER NV50AE	1	RATCHET SPRING
81	880-503	NAGELHALTER NV65AD2	1	NAIL HOLDER
82	878-791	"STIFT D2,5X12 NV50AF3"	1	ROLL PIN D2.5X12
83	883-986		1	HOLDER SHAFT (A)
84	881-826	FEDER NV50AF3	1	SPRING
85	880-319	SICHERUNGSRING NV50AG	2	SHAFT RING
86	949-757	INBUSSCHRAUBE M5X20 (10ST)	1	HEX. SOCKET HD. BOLT M5X20 (10 PCS.)
87	880-318	KLINKE 500DC	1	GUIDE LOCK
88	880-446	FEDER NV50AG u.a.	1	SPRING
89	883-392		1	NAIL GUIDE
90	883-085		1	NAIL STOPPER (A)
91	883-088		1	STOPPER SPRING (A)
92	883-086		1	NAIL STOPPER (B)
93	883-087		1	STOPPER SPRING (B)
94	883-089		1	NAIL GUIDE COVER
95	883-393		1	COVER
96	882-881		2	SLEEVE (B)
		INBUSSCHRAUBE M4X12		NYLOCK HEX.

97	880-630	DH40MA/MB/YB/	2		SOCKET HD. BOLT M4X12
98	883-983		1	"INCLUD.62,74- 84"	MAGAZINE ASS'Y
100	883-302		1	FOR EUROPE	PUSHING LEVER SPRING (B)
101	878-183	"AUFKLEBER ""WARNUNG"" DIV.NAGLER"	1	FOR EUROPE	WARNING LABEL
102	883-513		1	FOR EUROPE	WARNING LABEL(A)
501	875-769	SCHUTZBRILLE	1		SAFETY GLASSES
502	943-277	INBUSSCHLÜSSEL D3(M4)	1		HEX. BAR WRENCH 3MM
503	944-458	INBUSSCHLÜSSEL D4(M5)	1		HEX. BAR WRENCH 4MM
504	944-459	INBUSSCHLÜSSEL D5(M6)	1		HEX. BAR WRENCH 5MM
505	877-153	ÖLKANNE (30CC) NV83A	1	FOR EUROPE	PNEUMATIC TOOL LUBRICANT (30CC)