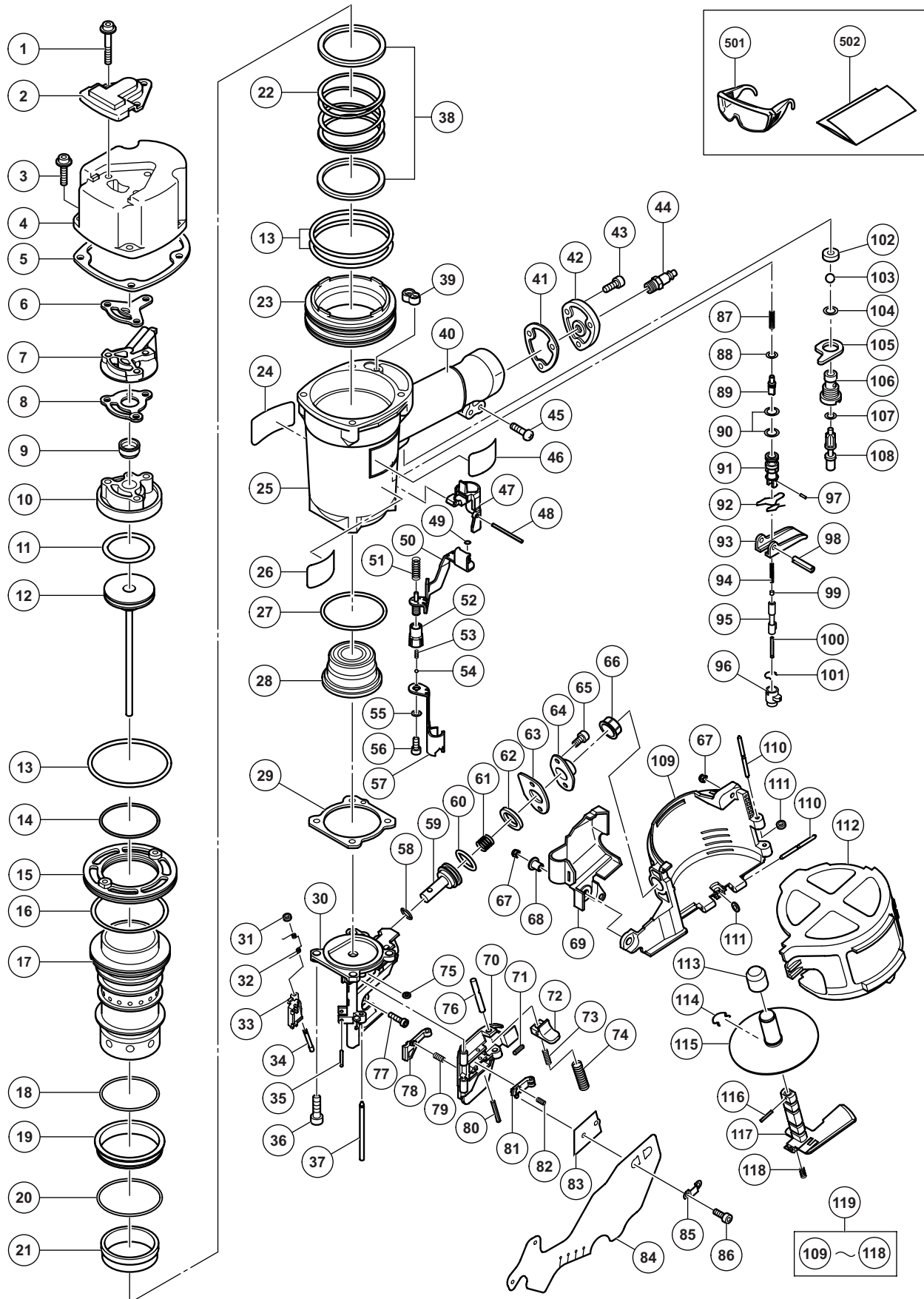


PNEUMATIC TOOL PARTS LIST

COIL NAILER
Model NV 83A3

2011-7-16
(E1)



PARTS

NV 83A3

| ITEM NO. | CODE NO. | DESCRIPTION | NO. USED | REMARKS |
|----------|----------|---|----------|---------------------------------|
| 1 | 883-509 | HEX. SOCKET HD. BOLT (W/FLANGE) M6 X 45 | 3 | |
| 2 | 877-330 | TOP COVER | 1 | |
| 3 | 883-507 | HEX. SOCKET HD. BOLT (W/SP. WASHER) M6 X 25 | 4 | |
| 4 | 877-324 | EXHAUST COVER | 1 | |
| 5 | 877-325 | GASKET (B) | 1 | |
| 6 | 877-329 | GASKET (F) | 1 | |
| 7 | 877-328 | EXHAUST PIECE | 1 | |
| 8 | 877-854 | GASKET (C) | 1 | |
| 9 | 887-774 | EXHAUST VALVE | 1 | |
| 10 | 887-859 | HEAD CAP | 1 | |
| 11 | 877-368 | O-RING (1AP-48) | 1 | |
| 12 | 878-428 | PISTON (H) | 1 | |
| 13 | 877-316 | O-RING (S-90) | 3 | |
| 14 | 877-312 | CYLINDER O-RING (I.D 63.1) | 1 | |
| 15 | 877-318 | CYLINDER PLATE | 1 | |
| 16 | 877-313 | CYLINDER O-RING (I.D 79.3) | 1 | |
| 17 | 887-762 | CYLINDER | 1 | |
| 18 | 878-376 | O-RING (I.D 59.6/W2.4) | 1 | |
| 19 | 887-767 | GUIDE SLEEVE | 1 | |
| 20 | 878-863 | O-RING (S-70) | 1 | |
| 21 | 877-317 | CYLINDER RING | 1 | |
| 22 | 877-321 | CYLINDER SPRING | 1 | |
| 23 | 887-763 | CYLINDER GUIDE | 1 | |
| 24 | 884-070 | WARNING LABEL | 1 | |
| 25 | 887-858 | BODY ASS'Y | 1 | INCLUD. 40 |
| 26 | 887-864 | LABEL | 1 | |
| 27 | 877-315 | CYLINDER O-RING (I.D 63.9) | 1 | |
| 28 | 883-511 | PISTON BUMPER (B) | 1 | |
| 29 | 877-334 | GASKET (A) | 1 | |
| 30 | 887-843 | NOSE | 1 | |
| 31 | 877-826 | FEEDER SHAFT RING | 1 | |
| 32 | 877-851 | FEEDER SPRING | 1 | |
| 33 | 887-848 | FEEDER | 1 | |
| 34 | 877-825 | FEEDER SHAFT | 1 | |
| 35 | 887-461 | ROLL PIN D3 X 20 (10 PCS.) | 1 | |
| 36 | 883-492 | NYLOCK HEX. SOCKET HD. BOLT M8 X 22 | 4 | |
| 37 | 887-847 | NAIL GUIDE SHAFT | 1 | |
| 38 | 877-322 | BASE WASHER | 2 | |
| 39 | 877-327 | GASKET (G) | 1 | |
| 40 | | GRIP RUBBER | 1 | SUPPLIED WITH ITEM NO. 601, 602 |
| 41 | 877-331 | GASKET (D) | 1 | |
| 42 | 878-311 | CAP | 1 | |
| 43 | 949-658 | HEX. SOCKET HD. BOLT M5 X 18 (10 PCS.) | 3 | |
| 44 | | AIR PLUG | 1 | |
| 45 | 949-243 | MACHINE SCREW M5 X 25 (10 PCS.) | 1 | |
| 46 | 887-866 | NAME PLATE | 1 | |
| 47 | 887-862 | VALVE GUARD | 1 | |
| 48 | 887-852 | ROLL PIN D3 X 45 | 1 | |
| 49 | 881-715 | O-RING (S3) | 1 | |
| 50 | 887-851 | PUSHING LEVER (B) | 1 | |

PARTS

NV 83A3

| ITEM NO. | CODE NO. | DESCRIPTION | NO. USED | REMARKS |
|----------|----------|--|----------|---------|
| 51 | 884-067 | SPRING | 1 | |
| 52 | 326-799 | ADJUSTER | 1 | |
| 53 | 880-175 | ADJUSTER SPRING | 2 | |
| 54 | 959-148 | STEEL BALL D3.175 (10 PCS.) | 2 | |
| 55 | 880-081 | WASHER | 1 | |
| 56 | 949-657 | HEX. SOCKET HD. BOLT M6 X 12 (10 PCS.) | 1 | |
| 57 | 887-850 | PUSHING LEVER (A) | 1 | |
| 58 | 872-645 | O-RING (P-9) | 1 | |
| 59 | 887-849 | FEED PISTON | 1 | |
| 60 | 876-796 | O-RING (P-22) | 1 | |
| 61 | 877-144 | FEED SPRING | 1 | |
| 62 | 877-711 | BUMPER | 1 | |
| 63 | 877-827 | FEED PISTON COVER (A) | 1 | |
| 64 | 877-713 | FEED PISTON COVER | 1 | |
| 65 | 887-474 | SEAL LOCK HEX. SOCKET HD. BOLT M5 X 10 | 2 | |
| 66 | 878-305 | MAGAZINE BUSHING | 1 | |
| 67 | 877-371 | NYLON NUT M5 | 2 | |
| 68 | 882-907 | SLEEVE | 1 | |
| 69 | 887-857 | GUARD | 1 | |
| 70 | 887-844 | NAIL GUIDE | 1 | |
| 71 | 887-458 | ROLL PIN D3 X 10 (10 PCS.) | 1 | |
| 72 | 326-774 | GUIDE LOCK (A) | 1 | |
| 73 | 877-372 | SPRING | 1 | |
| 74 | 878-425 | SPRING | 1 | |
| 75 | 880-319 | SHAFT RING | 1 | |
| 76 | 877-820 | LOCK SHAFT | 1 | |
| 77 | 949-757 | HEX. SOCKET HD. BOLT M5 X 20 (10 PCS.) | 1 | |
| 78 | 878-401 | SUB NAIL STOPPER | 1 | |
| 79 | 877-468 | SUB STOPPER SPRING | 1 | |
| 80 | 887-846 | ROLL PIN D3 X 28 | 1 | |
| 81 | 887-845 | MAIN NAIL STOPPER (N) | 1 | |
| 82 | 876-681 | MAIN STOPPER SPRING | 1 | |
| 83 | 877-469 | NAIL GUIDE COVER | 1 | |
| 84 | 884-023 | COVER | 1 | |
| 85 | 884-022 | PLATE | 1 | |
| 86 | 886-307 | SEAL LOCK HEX. SOCKET HD. BOLT M4 X 8 | 2 | |
| 87 | 887-724 | PLUNGER SPRING | 1 | |
| 88 | 874-436 | O-RING (P-4) | 1 | |
| 89 | 887-725 | PLUNGER | 1 | |
| 90 | 884-112 | O-RING (I.D 10.7) | 2 | |
| 91 | | VALVE BUSHING | 1 | |
| 92 | 887-727 | TRIGGER SPRING | 1 | |
| 93 | 876-203 | TRIGGER | 1 | |
| 94 | 887-728 | ROD SPRING | 1 | |
| 95 | | ROD (A) | 1 | |
| 96 | 887-766 | CHANGE KNOB | 1 | |
| 97 | 887-768 | PIN | 1 | |
| 98 | 887-865 | ROLL PIN D3 X 30 | 1 | |
| 99 | 887-729 | ROD (B) | 1 | |
| 100 | 887-732 | ROD (C) | 1 | |

PARTS

NV 83A3

| ITEM NO. | CODE NO. | DESCRIPTION | NO. USED | REMARKS |
|----------|----------|-------------------------|----------|-----------------|
| 101 | 886-331 | RATCHET SPRING | 1 | |
| 102 | 878-734 | VALVE PACKING | 1 | |
| 103 | 875-645 | URETHANE BALL (C) D7.14 | 1 | |
| 104 | 875-638 | O-RING (S-12) | 1 | |
| 105 | 887-771 | VALVE PLATE | 1 | |
| 106 | 887-839 | TRIGGER VALVE BUSHING | 1 | |
| 107 | 887-840 | O-RING | 1 | |
| 108 | | TRIGGER PLUNGER | 1 | |
| 109 | 887-855 | MAGAZINE | 1 | |
| 110 | 883-111 | PIN | 2 | |
| 111 | 877-826 | FEEDER SHAFT RING | 2 | |
| 112 | 884-034 | MAGAZINE COVER | 1 | |
| 113 | 884-038 | HOLDER CAP | 1 | |
| 114 | 884-037 | RATCHET SPRING | 1 | |
| 115 | 887-854 | NAIL HOLDER (A) | 1 | |
| 116 | 887-856 | ROLL PIN D2.5 | 1 | |
| 117 | 884-079 | HOLDER SHAFT | 1 | |
| 118 | 881-826 | SPRING | 1 | |
| 119 | 887-853 | MAGAZINE ASS'Y | 1 | INCLUD. 109-118 |

STANDARD ACCESSORIES

| ITEM NO. | CODE NO. | DESCRIPTION | NO. USED | REMARKS |
|----------|----------|----------------|----------|---------|
| 501 | 875-769 | SAFETY GLASSES | 1 | |
| 502 | 882-414 | LEAFLET | 1 | |
| | | | | |
| | | | | |
| | | | | |
| | | | | |
| | | | | |
| | | | | |

OPTIONAL ACCESSORIES

| ITEM NO. | CODE NO. | DESCRIPTION | NO. USED | REMARKS |
|----------|----------|---------------|----------|---------|
| 601 | 881-768 | GRIP TAPE (A) | 1 | |
| 602 | 880-407 | TAPE | 2 | |
| | | | | |
| | | | | |
| | | | | |
| | | | | |
| | | | | |