

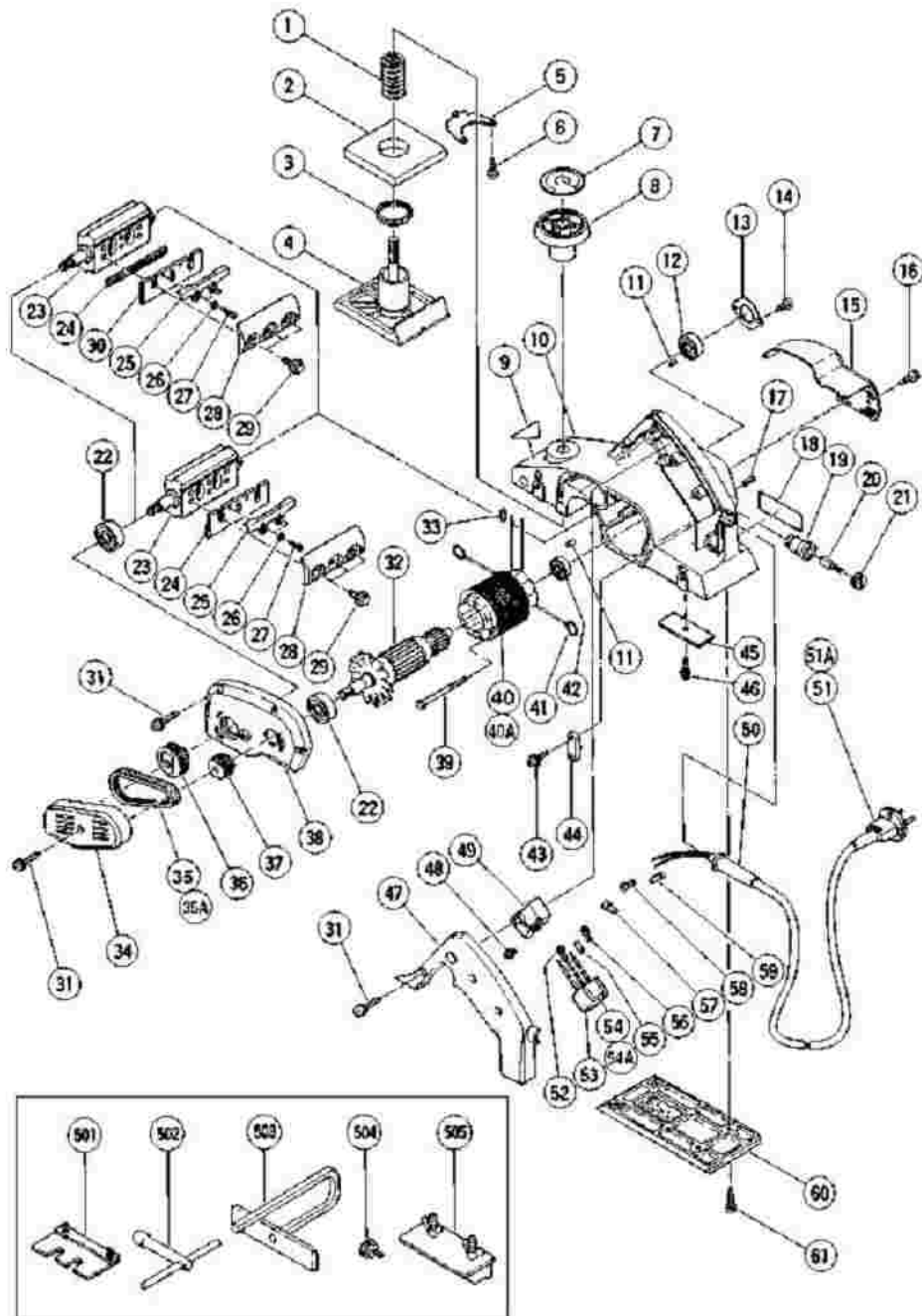
HITACHI

LIST NO. 0663

ELECTRIC TOOL PARTS LIST

■ PLANER
Model P 20SE

2001·6·1
(E1-1)



P20SE

Pos. Nr.	Art. Nr.	Beschreibung	Stueck	Kommentar	Be
1	958-709	FEDER F30A/P20SA/SA2/SE/SD	1		SPR
2	958-708	GUMMIDICHTUNG P20SA/SA2/SE	1		RUB PAC
3	958-691Z		1	FOR GBR	RIN
4	958-707	VORDERE GRUNDPLATTE P20D/DA	1		FRO
5	958-945	SCHRAUBPLATTE P20D/DA	1		SCR
6	954-004	SCHNEIDSCHRAUBE D4X16	1		TAP SCR
7	316-400	SKALA P20SE	1		SCA
8	316-399	KNAUF P20SE (INKL.POS.NR.7)	1	INCLUD.7	KNC
9			1		HIT/ LAB
10	962-640Z	GEHÄUSE KOMPL. P20SE	1	INCLUD.5,6,17,19	HOU ASS
11	931-701	LAGERVERRIEGELUNG (DIV.TYPEN)	2		BEA LOC
12	600-0VV	KUGELLAGER 6000 VV	1		BAL BEA 6000
13	314-301	LAGERDECKEL P20D/DA/SE	1		BEA COV
14	309-470	SCHNEIDSCHRAUBE D4X12 MIT FLANSCH	2		TAP SCR (W/F D4X (BLA
15	958-714	ENDDECKEL P20SE	1		TAI
16	307-811	SCHNEIDSCHRAUBE D4X16 M.FLANSCH	2		TAP SCR (W/F D4X (BLA
17	938-477	INBUSSTIFTSCHRAUBE M5X8	2		HEX SET M5X
18			1		NAM
19	957-571	KOHLLENHALTER G12SA/G13SB u.a.	2		BRU HOL

20	999-021	KOHLLENBÜRSTEN (PAAR)	2		CAR BRU PAII
21	931-266	KOHLLENKAPPE G12SA/G13SB u.a.	2		BRU
22	620-0VV	KUGELLAGER 6200 VV	2		BAL BEA 6200
23	316-397	MESSERBLOCK KOMPL. P20SE	1	INCLUD.12,22	CUT BLO
24	879-418	HM- HOBELWENDEMESSER 82MM (1PAAR)	2		PLA BLA PAII
24	314-746	HOBELMESSER 82MM	2	FOR TPE,SAF	PLA BLA (1 P/
25	314-754	HALTEPLATTE (A) P20SD/SA2/SE	2		SET
26	949-423	UNTERLEGSCHLEIFE M4 (10ST)	4		WAS (10 F
27	949-213	+KOPFSCHRAUBE M4X5 (10ST)	4		MAC SCR (10 F
28	316-398	BLATTHALTER P20DA/SE	2		BLA HOL
29	990-669	SPEZIALSCHRAUBE M6X18 M.U-SCHEIBE	6		BOL (W/ M6X
30	314-740	MESSERHALTER (B) (1PAAR)	2	FOR SYR,SIN,GBR,FRG,FRA,HOL,AUT,ESP	SET (1 P/
31	307-028	SCHNEIDSCHRAUBE D4X25 MIT FLANSCH	9		TAP SCR (W/ D4X (BL/
32	958-697U		1	INCLUD.22,42	ARM ASS 115V
32	958-697E	ANKER 220V-230V P20SE	1		ARM 220V
32	958-697F		1		ARM 240V
33	981-373	ADERENDHÜLSE (D) DIV.TYPEN	2	FOR GBR,FRG,FRA,HOL,AUT,ESP	TUB
34	316-402	RIEMENDECKEL P20DA/SE	1		BEL (B)
35	958-718	RIEMEN F20A	1		BEL

35A	319-324		1	FOR TPE	BEL
36	958-717		1		PUL
37	958-716		1		PUL
38	958-704	ENDTRÄGER P20SE	1		END
39	960-108	SCHNEIDSCHRAUBE D4X60	2		HEX TAP SCR
40	958-693N		1	INCLUD.41	STA 110V
40	958-693L	STATOR 230V P20SE	1	INCLUD.41	STA 230V
40	958-693M		1	INCLUD.41	STA 240V
40A	958-693C		1	INCLUD.41 FOR TPE	STA 110V
40	954-215E	STATOR 220V-230V F20A	1	INCLUD.41 FOR SYR SIN	STA 220V
40	958-693K		1	INCLUD.41 FOR SAF	STA 220V
40	958-693H		1	INCLUD.41 FOR AUS	STA 240V
41	930-630	KOHLLENHALTERKLEMME CN16 u.a.	2		BRU TER
42	608-VVM	KUGELLAGER 608 VVM	1		BAL BEA 608V
43	984-750	SCHNEIDSCHRAUBE D4X16 MIT FLANSCH	2		TAP SCR (W/F D4X
44	937-631	KABELKLEMME DIV.TYPEN	1		COR
45	306-819	PLATTE (A) P20SE	1	FOR TPE,GBR,SAF,FRG,FRA,HOL,AUT,ESP	PLA
46	982-034	SCHNEIDSCHRAUBE D4X12 M.U.SCHEIBE	1	FOR TPE,GBR,SAF,FRG,FRA,HOL,AUT,ESP	TAP SCR (W/\ D4X
47	958-944	HANDGRIFFDECKEL P20SE	1		HAN COV (GRI
48	305-499	" +KOPFSCHRAUBE M3,5X6 M.U-SCHEIBE "	4	FOR TPE,SYR,SIN,SAF	MAC SCR (W/\

					M3.5
49	963-756Z	SCHALTER C6U/C7U/CR10V/CR12V u.a.	1		SWI PIL W/S. LOC
49	957-747	SCHALTER CR10V/CR12V/u.a.	1	FOR SYR,SIN,THA	SWI SCR W/L
49	302-477		1	FOR TPE,SAF	SWI SCR W/L
50	980-193	KABELKNICKSCHUTZ D10.2 DIV.TYPEN	1		COR D10.
50	303-662	KABELKNICKSCHUTZ D8.8 DIV.TYPEN	1		COR D8.8
51	500-234Z	ANSCHLUSSKABEL MIT STECKER	1	(CORD ARMOR D8.8)	COR
51	500-245Z		1	(CORD ARMOR D10.2) FOR SYR	COR
51	500-423Z		1	(CORD ARMOR D8.8) FOR SIN	COR
51A	500-461Z		1	(CORD ARMOR D8.8) FOR GBR (110V)	COR
51A	958-378Z		1	(CORD ARMOR D8.8) FOR GBR (230V)	COR
51	500-212Z		1	(CORD ARMOR D8.8) FOR TPE	COR
51	500-439Z		1	(CORD ARMOR D10.2) FOR AUS	COR
52	959-144	KABELSCHUH 50051 (10ST) DIV.TYPEN	1	FOR NOISE SUPPRESSOR	TER 5005
53	930-153	POLSTER (B) SELBSTKLEB. DIV.TYPEN	1	FOR NOISE SUPPRESSOR	SUP.
54	994-273	KONDENSATOR DIV.TYPEN	1	FOR GBR,SAF,FRG,FRA,HOL,AUT,ESP	NOI SUP
54A	319-351		1	FOR TPE	NOI SUP
55	981-373	ADERENDHÜLSE (D) DIV.TYPEN	1	FOR NOISE SUPPRESSOR	TUB
56	980-063	KABELSCHUH C7U/CJ65V2/H70SA/G13V	1	FOR NOISE SUPPRESSOR	TER
57	959-140	VERBINDER 50091 (10ST) DIV.TYPEN	1	FOR SYR,SIN	CON 5009
58	980-063	KABELSCHUH C7U/CJ65V2/H70SA/G13V	1	FOR CORD	TER
59	981-373	ADERENDHÜLSE (D) DIV.TYPEN	2	FOR CORD	TUB

60	940-633	HINTERE GRUNDPLATTE P20DA	1		REA
61	954-004	SCHNEIDSCHRAUBE D4X16	4		TAP SCR
501	316-419	EINSTELLEHRE P20DA/SA2/SE	1		SET
502	940-543	STECKSCHLÜSSEL 10MM C8FS/P20SA	1		BOX 10M
503	958-842Z	PARALLELANSCHLAG P20SA/SE	1		GUI
504	940-650	ANSCHLAGSCHRAUBE F20A/F30A	1		STO SCR
505	314-767	MESSERHALTER ZUM SCHLEIFEN	1	FOR TPE,SAF	BLA SHA ASS