



LIST NO. 0439

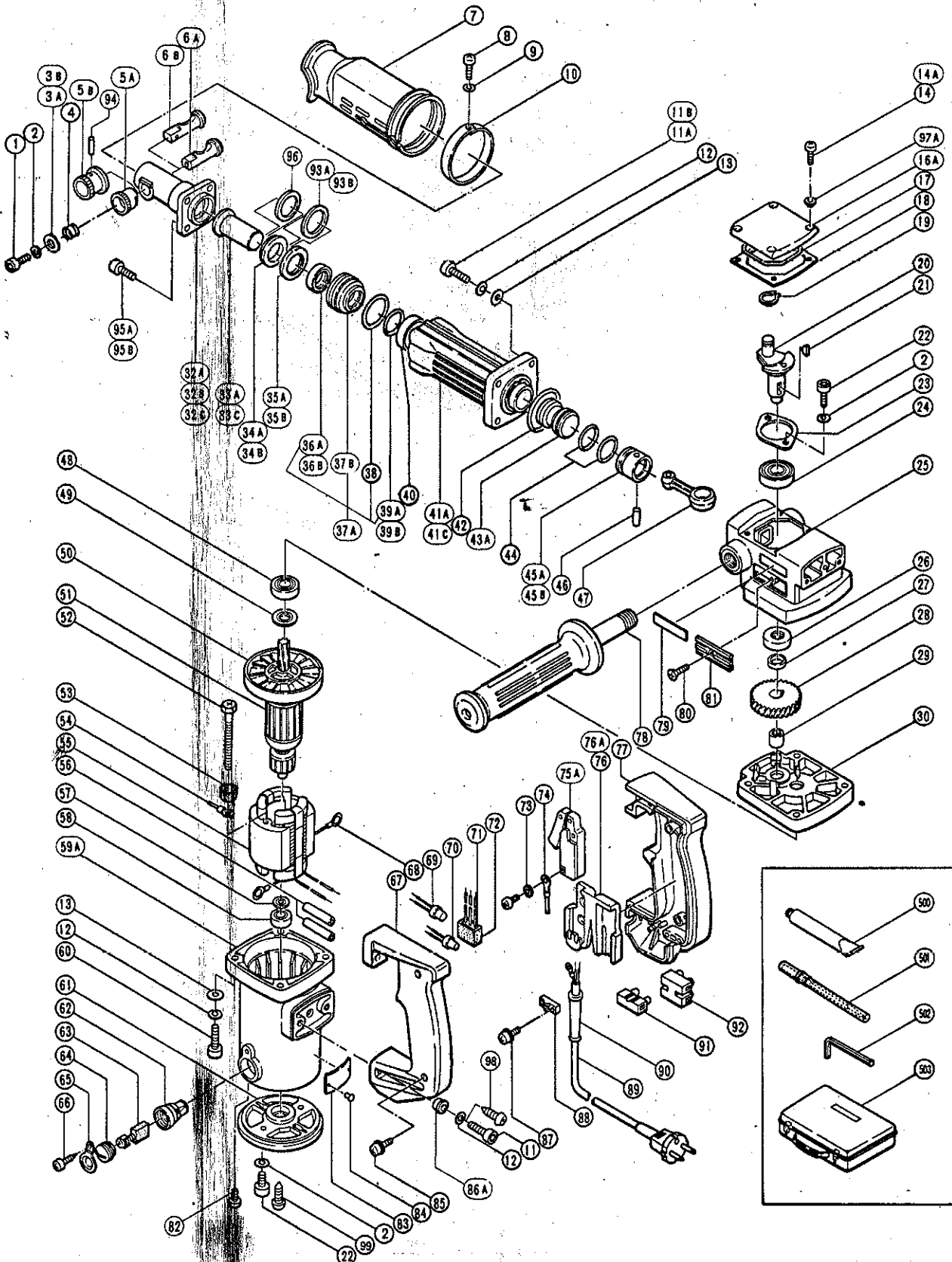
ELECTRIC TOOL PARTS LIST

■ HAMMER

1988·8·20

Model PHU-45

PHU-45(E5)



PARTS

PHU-45(E5)

Item No.	Code No.	Part Name	Q'ty	Remarks
1	949831	Hexagon Socket Hd. Bolt M6 x 15	1	till 3, 1982 (except Italy, Norway, Cyprus, Australia (10 pcs.))
2	949454	Spring Lock Washer	4	for M5 (10 pcs.)
3A	982001Z	Stopper Washer	1	till 3, 1982 (except Italy, Norway, Cyprus, Australia)
3B	983277	Stopper Washer	1	since 4, 1982 (since 11, 1981 for Italy, Norway, Cyprus, Australia)
4	981937	Stopper Spring	1	
5A	981936	Knob	1	till 3, 1982 (except Italy, Norway, Cyprus, Australia)
5B	983241	Knob (A)	1	since 4, 1982 (since 11, 1981 for Italy, Norway, Cyprus, Australia)
6A	982000Z	Stop Lever	1	till 3, 1982 (except Italy, Norway, Cyprus, Australia)
6B	983240	Stop Lever	1	since 4, 1982 (since 11, 1981 for Italy, Norway, Cyprus, Australia)
7	980714	Rubber Cover	1	
8	949214	Machine Screw M4 x 6	1	(10 pcs.)
9	949453	Spring Lock Washer	1	for M4 (10 pcs.)
10	980748	Band	1	
11A	949652	Hexagon Socket Hd. Bolt M6 x 25	8	till 2, 1984 (10 pcs.)
11B	991700	Hexagon Socket Hd. Bolt M6 x 28	8	since 3, 1984
12	949455	Spring Lock Washer	12	for M5 (10 pcs.)
13	949432	Bolt Washer	8	for M6 (10 pcs.)
14	949217	Machine Screw M4 x 12	4	till 12, 1983 (10 pcs.)
14A	983162	Hexagon Socket Hd. Bolt M4 x 12	4	since 1, 1984
16A	987709	Crank Cover	1	
17	980744	O-Ring (S-55)	1	
18	980749	Seal Packing	1	
19	939542	C-Type Retaining Ring	1	for D12 shaft (10 pcs.)
20	981993Z	Crank Shaft	1	
21	932815	Woodruff Key	1	
22	949665	Hexagon Socket Hd. Bolt M5 x 14	4	(10 pcs.)
23	981847	Bearing Cover	1	
24	6203VV	Ball Bearing 6203VVCMP52S	1	
25	981992Z	Crank Case	1	
26	971745	Oil Seal (A)	1	
27	980706	Collar	1	
28	981995Z	First Gear	1	
29	946408	Needle Bearing (BK1210)	1	
30	981991Z	Gear Cover	1	
32A	980743	Front Cover	1	till 3, 1982 (except Italy, Norway, Cyprus, Australia)
32B	981203Z	Front Cover Ass'y	1	from 4, 1982 to 7, 1984 (since 2, 1982 for Italy, Norway, Cyprus, Australia) includ. 96
32C	983284	Front Cover Ass'y	1	since 8, 1984, includ. 96
33A	980767	Second Hammer Ass'y 22mm ϕ	1	till 3, 1982 (except Italy, Norway, Cyprus, Australia) includ. 34
33C	983253	Second Hammer Ass'y	1	since 4, 1982 (since 2, 1982 for Italy, Norway, Cyprus, Australia) includ. 34B
34A	980720	Damper washer	1	till 3, 1982 (Except Italy, Norway, Cyprus, Australia)
34B	983237	Damper Washer	1	since 4, 1982 (since 11, 1981 for Italy, Norway, Cyprus, Australia)
35A	981999Z	Damper	2	till 3, 1982 (except Italy, Norway, Cyprus, Australia)
35B	983235	Damper	2	since 4, 1982 (since 11, 1981 for Italy, Norway, Cyprus, Australia)
36A	980755	U-Ring (A)	1	till 3, 1982 (except Italy, Norway, Cyprus, Australia)
36B	983235	Damper	2	since 4, 1982 (since 11, 1981 for Italy, Norway, Cyprus, Australia)
37A	980765	Hammer Holder Ass'y	1	till 3, 1982 (except Italy, Norway, Cyprus, Australia) includ. 36A, 38, 39A
37B	983232	Hammer Holder	1	since 4, 1982 (since 11, 1981 for Italy, Norway, Cyprus, Australia)
38	980717	O-Ring (S-38)	1	
39A	872470	O-Ring (S-26)	1	till 3, 1982 (except Italy, Norway, Cyprus, Australia)
39B	983233	Rubber-Ring	1	since 4, 1982 (since 11, 1981 for Italy, Norway, Cyprus, Australia)
40	980713	Valve Band	1	till 12, 1985
41A	981996Z	Cylinder Case Ass'y	1	includ. 40 till 7, 1984
41C	992689	Cylinder Case Ass'y	1	includ. 36B, since 8, 1984

PARTS

PHU-45(E5)

Item No.	Code No.	Part Name	Q'ty	Remarks
42	980715	O-Ring (S-48)	1	
43A	991706	Striker	1	
44	980710	O-Ring	2	
45A	980709	Piston	1	till 3. 1982 (except Italy, Norway, Cyprus, Australia)
45B	981885	Piston	1	since 4. 1982 (since 11. 1981 for Italy, Norway, Cyprus, Australia)
46	980708	Piston Pin	1	
47	980707	Connecting Rod	1	
48	6202VV	Ball Bearing 6202VVCMP2S	1	
49	980700	Dust Washer (B)	1	
50	980740	Fan	1	
51	—	Armature Ass'y	1	See Alternative Parts
52	960251	Hexagon Hd. Tapping Screw D5 x 65	2	
53	956764	Special Washer	2	
54	—	Internal Wire	1	See Alternative Parts
55	—	Stator Ass'y	1	See Alternative Parts
56	—	Vinyl Tube (B) (D7 x T0.5 x 170)	1	
57	980698	Dust Washer (A)	1	
58	608VVM	Ball Bearing 608VVMC2EPS2L	1	
59A	982009	Housing Ass'y (B)	1	includ. 62, 82, 98, 99
60	949782	Hexagon Socket Hd. Bolt M6 x 50	4	(10 pcs.)
61	981951	Tail Cover	1	
62	981586	Brush Holder	2	
63	981612Z	Carbon Brush	2	Auto Stop Type (2 pcs.)
64	961781	Brush Cap	2	
65	981959	Brush Cap Cover	2	
66	958715	Tapping Screw D4 x 10	2	
67	981867	Handle (B)	1	
68	930703	Brush Terminal	2	
69	—	Connector (50092)	1~2	See alternative parts
70	959140	Connector (50091)	1	(10 pcs.)
71	—	Noise Suppressor	1	See alternative parts
72	—	Support (B)	1	
73	949423	Washer	1	for M4 (10 pcs.)
74	981974Z	Internal Wire	1	
75	—	Switch	1	See alternative parts
76	—	Support	1	See alternative parts
77	981866	Handle (A)	1	
78	956259	Side Handle Ass'y	1	
79	957561	HITACHI Label	1	
80	949322	Flat Hd. Screw M4 x 10	2	(10 pcs.)
81	980735	Wind Guide	2	
82	962782	Hexagon Socket Hd. Screw M5 x 6	2	
83	—	Name Plate	1	
84	949510	River D2.5 x 4.8	2	(10 pcs.)
85	956638	Tapping Screw D4 x 25	2	
86A	990940	Distance Piece (C)	4	
87	930446	Tapping Screw D4 x 16	2	
88	—	Cord Clip	1	See alternative parts
89	—	Cord Ass'y	1	See alternative parts
90	—	Cord Armor	1	See alternative parts
91	938307Z	Pillar Terminal	2	
92	—	Pillar Terminal	1	See alternative parts
93A	982002Z	Washer	1	till 3. 1982 (except Italy, Norway, Cyprus, Australia)

PARTS

PHU-45(E5)

Item No.	Code No.	Part Name	Q'ty	Remarks	
93B	983236	Washer	1	since 4. 1982 (since 11. 1981 for Italy, Norway, Cyprus, Australia)	
94	983364	Needle Roller	1	since 4. 1982 (since 11. 1981 for Italy, Norway, Cyprus, Australia)	
95A	981942	Special Bolt	M6 x 25	4	till 7. 1984
95B	991696	Bolt	M7 x 25	4	since 8. 1984
96	983249	Damper (B)		1	since 4. 1982 (since 2. 1982 for Italy, Norway, Cyprus, Australia)
97A	990146	Distance Piece (A)		4	
98	992802	Tapping Screw	D6 x 25	2	
99	985480	Tapping Screw	D5 x 20	2	

ALTERNATIVE PARTS

Item No.	Code No.	Part Name	Q'ty	Remarks	
51	981971C	Armature Ass'y	110V ~ 115V	1	includ. 50
	981971D	Armature Ass'y	120V ~ 127V	1	includ. 50
	981971E	Armature Ass'y	220V ~ 230V	1	includ. 50
	981971F	Armature Ass'y	240V	1	includ. 50
	981971H	Armature Ass'y	240V	1	for U.K., includ. 50
	981971J	Armature Ass'y	110V	1	for U.K., includ. 50
	981971L	Armature Ass'y	220V	1	for Denmark, Finland, Sweden, Netherlands, Italy, F.R. Germany, France, includ 50
54	971776	Internal Wire		1	
	971825Z	Internal Wire		1	for Finland, Austria
55	981970C	Stator Ass'y	110V ~ 115V	1	includ. 68
	981970D	Stator Ass'y	120V ~ 127V	1	includ. 68
	981970E	Stator Ass'y	220V ~ 230V	1	includ. 68
	981970F	Stator Ass'y	240V	1	includ. 68
	981970G	Stator Ass'y	220V ~ 230V	1	for Denmark, Finland, Sweden, N.Z., Italy, France, F.R. Germany, Netherlands, includ. 68
	981970H	Stator Ass'y	240V	1	for Australia, includ. 68
	981970J	Stator Ass'y	110V	1	for U.K. includ. 68
69	959141	Connector (50092)		1~2	for Denmark, Finland, Sweden, N.Z., Italy, France, F.R. Germany, Netherlands (10 pcs.)
71	958847	Noise Suppressor		1	for Denmark, Sweden, F.R. Germany, N.Z., U.K., France, Netherlands
	971828Z	Noise Suppressor		1	for Finland, Austria
	958846Z	Noise Suppressor		1	for Switzerland
72	930153	Support (B)		1	for Netherlands, Denmark, Sweden, N.Z., U.K., Italy, F.R. Germany, France
75A	992891	Single Pole Switch (Screw Type)		1	w/o Lock
	991533Z	Double Pole Switch (Pillar Type)		1	w/o Lock for Oceania
	995398	Single Pole Switch (Screw Type)		1	w/o Lock for F.R. Germany
76	981869	Support		1	till 12. 1986
	981986Z	Support		1	for Oceania
76A	990082	Support (E)		1	
88	960266	Cord Clip		1	
	981987Z	Cord Clip		1	for Switzerland

ALTERNATIVE PARTS

PHU-45(E5)

Item No.	Code No.	Part Name	Q'ty	Remarks
89	500239Z	Cord 110V ~ 240V	1	
	500235Z	Cord 110V ~ 240V	1	for F.R. Germany, France, Italy, Indonesia
	500394Z	Cord 220V ~ 240V	1	for Syria
	500224Z	Cord 230V ~ 240V	1	for Singapore
	982007	Cord 230V ~ 240V	1	for Oceania w/o Terminal
	500406Z	Cord 110V ~ 240V	1	for U.K., S. Africa
	500390Z	Cord 220V	1	for Austria, Netherlands, Denmark, Finland, Sweden
	500391Z	Cord 220V	1	for Switzerland
	500249Z	Cord 115V	1	for U.S.A., Canada
90	940778	Cord Armor D10.7	1	
	958049Z	Cord Armor D 8.2	1	
92	958308Z	Pillar Terminal	1	for Finland

STANDARD ACCESSORIES

Item No.	Code No.	Part Name	Q'ty	Remarks
500	981840	Grease (A)	1	
501	980752	Bull Point 280 mm	1	Hexagon Type
502	944459	Hexagon Bar Wrench	1	
503	971129	Case	1	

OPTIONAL ACCESSORIES

Item No.	Code No.	Part Name	Q'ty	Remarks
601	981929	Anchor Adapter No. 30	1	
602	981930	Anchor Adapter No. 40	1	
603	981931	Anchor Adapter No. 50	1	
604	981924	Cutter (W45 x 280L)	1	
605	981925	Cold Chisel 280 mm	1	
606	981926	Cold Chisel 450 mm	1	
607	981922	Bull Point 280 mm (Round Type)	1	
608	981923	Bull Point 450 mm (Round Type)	1	
609	956126	Scoop 405L	1	
610	944573	Turning Handle	1	
611	944574	Drift Key	1	
612	955186	Shank 250L	1	
613	955183	Bushing Tool	1	
614	955181	Rammer 140 mm	1	
615	980927	Grease for Impact Drill (500G)	1	
616	944575	Syringe	1	
617	983278Z	Side Handle Ass'y	1	includ. 618-621
618	981870	Side Handle	1	
619	980657Z	Handle Holder Ass'y	1	
620	971785	Handle Bolt	1	
621	672612	Spring	1	