

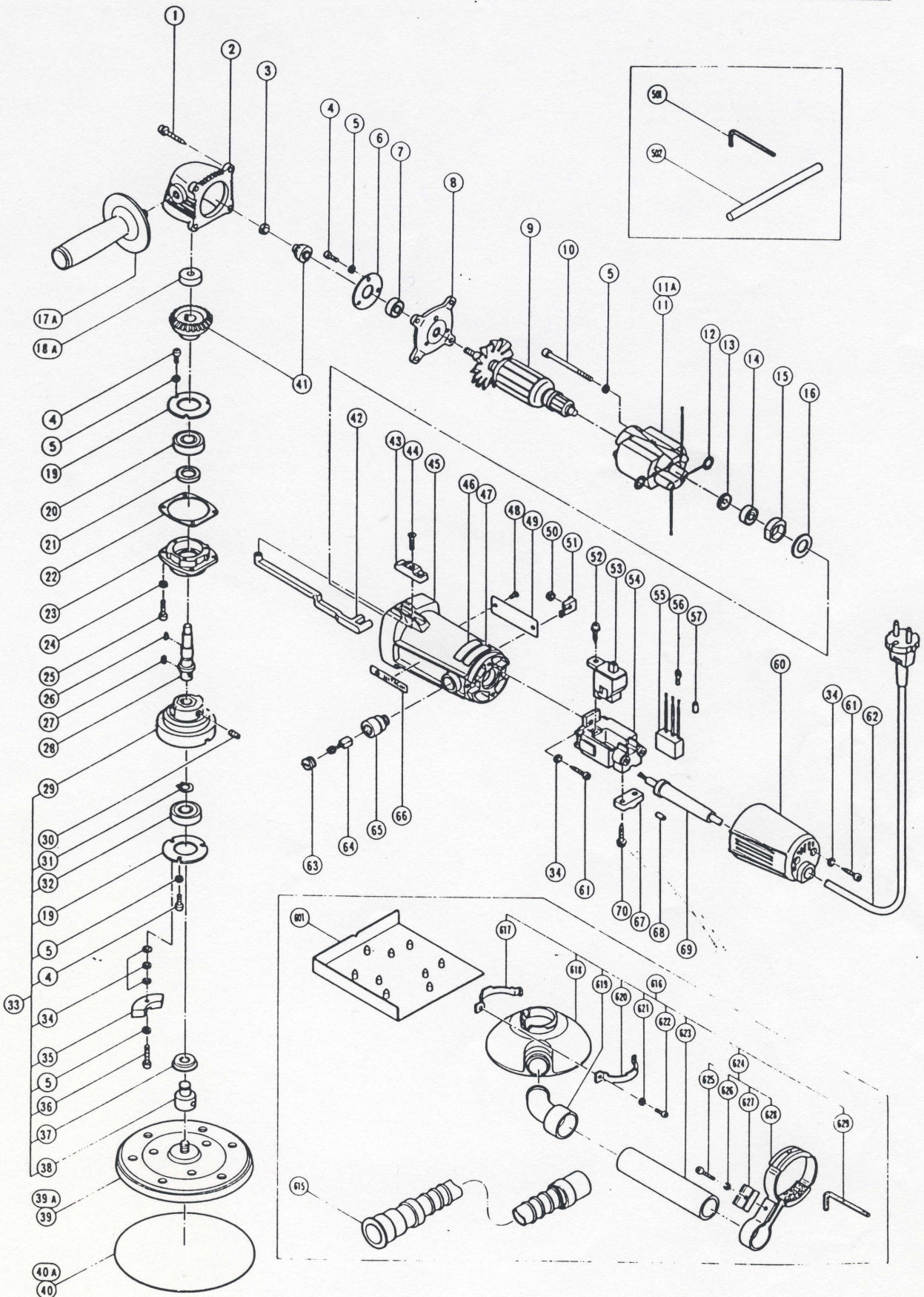
## ELECTRIC TOOL PARTS LIST

■ ROTARY ORBITAL SANDER

1990·1·17

Model SAY-150A

SAY-150A(E3)





## PARTS

SAY-150A

ITEM NO.	CODE NO.	DESCRIPTION	NO. USED	REMARKS
1	982-032	TAPPING SCREW (W/SP.WASHER) D5X25	4	
2	980-770	GEAR COVER	1	
3	949-566	LOCK NUT M5 (10 PCS.)	1	
4	949-216	MACHINE SCREW M4X10 (10 PCS.)	8	
5	949-453	SPRING WASHER M4 (10 PCS.)	11	
6	937-125	BEARING COVER (A)	1	
7	608-VVM	BALL BEARING 608VVMC2EPS2L	1	
8	937-124	INNER COVER	1	
*	9	980-785C	1	ARMATURE 110V-127V
*	9	980-785E	1	ARMATURE 220V-230V
*	9	980-785F	1	ARMATURE 240V
*	9	980-785G	1	ARMATURE 220V FOR DEN,AUT,NOR
*	9	980-785H	1	ARMATURE 240V FOR GBR
*	9	980-785J	1	ARMATURE 110V FOR GBR
10	930-176	MACHINE SCREW M4X65	2	
*	11	980-783C	1	STATOR ASS'Y 110V-127V INCLUD.12
*	11	980-783E	1	STATOR ASS'Y 220V-230V INCLUD.12
*	11	980-783F	1	STATOR ASS'Y 240V INCLUD.12 FOR GBR
*	11	980-783G	1	STATOR ASS'Y 220V-230V INCLUD.12 FOR NZL,DEN,SWE,AUT,NOR,SUI
*	11	980-783H	1	STATOR ASS'Y 240V INCLUD.12
*	11	980-783J	1	STATOR ASS'Y 110V INCLUD.12 FOR GBR
*	11	980-783L	1	STATOR ASS'Y 220V INCLUD.12 FOR ITA
*	11A	980-783K	1	STATOR ASS'Y 220V INCLUD.12 FOR FRG,FRA,HOL
12	930-630	BRUSH TERMINAL	2	
13	937-706	DUST SEAL	1	
14	626-VVM	BALL BEARING 626VVMC2ERPS2S	1	
15	937-810	BEARING BUSHING	1	
16	980-801	STOP PLATE	1	
17A	956-633	SIDE HANDLE	1	
18A	935-522	METAL	1	
19	936-680	BEARING COVER (B)	2	
20	620-1VV	BALL BEARING 6201VVCMP2S	1	
21	937-135	FELT PACKING	1	
22	936-682	SEAL PACKING	1	
23	980-772	PACKING GLAND	1	
24	949-454	SPRING WASHER M5 (10 PCS.)	4	
25	949-239	MACHINE SCREW M5X16 (10 PCS.)	4	
26	940-220	WOODRUFF KEY 2.5X8	1	
27	980-809	FEATHER KEY 4X4X8	1	
28	980-806	SPINDLE (A)	1	
29	980-810	SPINDLE CONNECTOR (A)	1	
30	980-808	HEX. SOCKET SET SCREW M6X12	1	
31	939-542	RETAINING RING FOR D12 SHAFT (10 PCS.)	1	
32	620-1DD	BALL BEARING 6201DDUCMAV2S	1	
33	980-807	CONNECTOR (A) ASS'Y	1	INCLUD.4,5,19,29,31,32,34-38
34	949-423	WASHER M4 (10 PCS.)	5	
35	980-777	COUNTER WEIGHT	1	
36	949-221	MACHINE SCREW M4X20 (10 PCS.)	1	
37	980-775	DUST SEAL	1	
38	980-776	PAD SPINDLE	1	
*	39	980-780	1	SANDING PAD 150MM
*	39A	985-684	1	PAD (PRESSURE SENSITIVE TYPE) 150MM FOR FRA,SUI

\* : ALTERNATIVE PARTS

01-90







