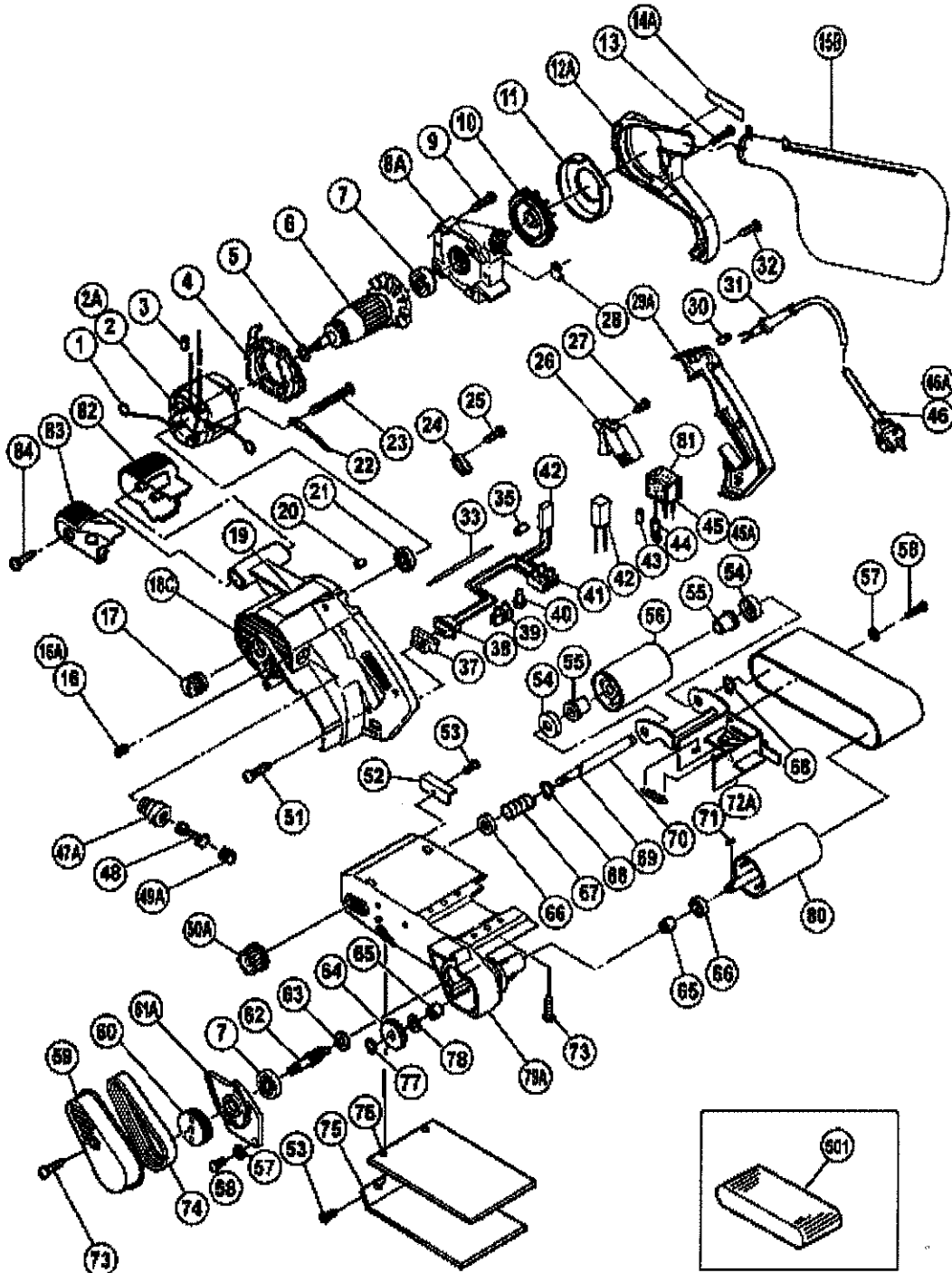


## ELECTRIC TOOL PARTS LIST

**BELT SANDER**  
**Model SB 10T**

2004 · 12 · 1

(E3-2)



## PARTS

SB10T

ITEM No.	CODE No.	DESCRIPTION	No. USED	REMARKS
1	930-703	BRUSH TERMINAL	2	
*	2	340-104C	1	INCLUD.1,3
*	2	340-104D	1	INCLUD.1,3
	2	340-104E	1	INCLUD.1,3
	2	340-104F	1	INCLUD.1,3
*	2	340-104K	1	INCLUD.1 FOR SUI,NZL
*	2	953-142J	1	INCLUD.1 FOR FIN
*	2	953-142H	1	INCLUD.1 FOR GBR
*	2	953-142K	1	INCLUD.1 FOR GBR
*	2A	340-104L	1	INCLUD.1 FOR ITA,FRG,FRA,HOL,DEN,POR,
	2A	340-104L	0	ESP,SWE,AUT,SAF,NOR
*	2A	340-104P	1	INCLUD.1,3 FOR AUS
	3	981-373	1	TUBE (D)
	4	953-185	1	FAN GUIDE
	5	954-234	1	BEARING WASHER (B)
*	6	953-145U	1	ARMATURE ASS'Y 110V-115V
*	6	953-145D	1	ARMATURE 120V-127V
*	6	953-145E	1	ARMATURE 220V-230V
*	6	953-145F	1	ARMATURE 230V-240V
	6	953-145F	0	FOR KUW,NGU,AUS,GBR,ITA,FRG,HOL,DEN,SWE, AUT,NOR,ESP
	7	620-0VV	2	BALL BEARING 6200VVCMP2L
	8A	322-590	1	INNER COVER
	9	986-011	4	TAPPING SCREW (W/SP. WASHER) D5X30
	10	953-053	1	DUST FAN
	11	953-156	1	DUST GUIDE
	12A	322-589	1	DUST COVER
	13	949-223	2	MACHINE SCREW M4X25 (10 PCS.)
	14A		1	HITACHI LABEL (B)
	15B	322-592	1	DUST BAG (GRAY)
	16	932-668	2	HEX. SOCKET SET SCREW M4X10
	16A	938-477	2	HEX. SOCKET SET SCREW M5X8
	17	987-532	1	PULLEY (A)
	18C	323-590	1	HOUSING ASS'Y
	19		1	NAME PLATE
	20	931-701	1	BEARING LOCK
	21	629-VVM	1	BALL BEARING 629VVC2PS2L
*	22	953-033	1	INTERNAL WIRE
*	22	961-421Z	1	INTERNAL WIRE

\*:ALTERNATIVE PARTS

--2--

## PARTS

SB10T

ITEM No.	CODE No.	DESCRIPTION	No. USED	REMARKS
23	953-174	HEX. HD. TAPPING SCREW D5X55	2	
24	937-831	CORD CLIP	1	
25	984-750	TAPPING SCREW (W/FLANGE) D4X16	2	
* 26	931-573	SWITCH (2P PILLAR TYPE) W/LOCK	1	
* 26	953-178	SWITCH (2P PILLAR TYPE) W/SAFETY LOCK	1	FOR FRA
27	954-017	TAPPING SCREW D4X12	1	
28	953-169	PLATE	1	
29A	953-186	HANDLE COVER	1	
* 30	981-373	TUBE (D)	2	FOR CORD
* 31	958-049	CORD ARMOR D8.2	1	
* 31	940-778	CORD ARMOR D10.7	1	
32	958-705	TAPPING SCREW D4X25	1	
33		INTERNAL WIRE	1	
35	981-373	TUBE (D)	1	
37	971-792	SLIDE SWITCH COVER	1	
* 38	953-171	SLIDE SWITCH (1P SOLDER TYPE)	1	
* 38	995-582	SLIDE SWITCH (1P SOLDER TYPE)	1	FOR USA
* 39	938-307	PILLAR TERMINAL	1	FOR FIN
40	959-140	CONNECTOR 50091 (10 PCS.)	2	
* 41	958-308Z	PILLAR TERMINAL (A)	1	FOR USA
* 42	956-613	DIODE 100V-127V	1	
* 42	956-614	DIODE 200V-240V	1	
* 42	953-250P	DIODE 115V	1	FOR CAN,USA
* 42		CONTROLLER CIRCUIT 240V	1	
042	000-008D		0	FOR AUS
* 43	981-373	TUBE (D)	2	FOR NOISE SUPPRESSOR
* 44	938-108	TERMINAL	1	FOR NOISE SUPPRESSOR
* 44	983-504	TERMINAL	1	FOR NOISE SUPPRESSOR FOR AUS
* 45	960-283Z	NOISE SUPPRESSOR	1	FOR SUI
* 45A	994-273	NOISE SUPPRESSOR	1	
* 46	500-201Z	CORD	1	(CORD ARMOR D10.7)
* 46	500-439Z	CORD	1	(CORD ARMOR D8.2) FOR NGU,NZL,AUS
* 46	500-231Z	CORD	1	(CORD ARMOR D8.2) FOR SAF
* 46	500-234Z	CORD	1	(CORD ARMOR D8.2) FOR ITA,FRG,FRA,HOL,
046	500-234Z	CORD	0	DEN,AUT,INA,SUR
* 46	500-237Z	CORD	1	(CORD ARMOR D8.2) FOR GBR (110V)
* 46	500-240Z	CORD	1	(CORD ARMOR D8.2) FOR USA,CAN
* 46	500-247Z	CORD	1	(CORD ARMOR D10.7) FOR FIN,SWE,NOR

\*ALTERNATIVE PARTS

-- 3--

## PARTS

SB10T

ITEM No.	CODE No.	DESCRIPTION	No. USED	REMARKS
* 46	500-248Z	CORD	1	(CORD ARMOR D10.7) FOR SUI
* 46A	500-423Z	CORD	1	(CORD ARMOR D8.2) FOR SIN,KUW
* 46A	500-435Z	CORD	1	(CORD ARMOR D8.2) FOR GBR (240V)
* 46A	500-447Z	CORD	1	(CORD ARMOR D8.2) FOR SYR
47A	958-900	BRUSH HOLDER	2	
48	999-043	CARBON BRUSH (1 PAIR)	2	
49A	945-161	BRUSH CAP	2	
50A	995-578	KNOB NUT	1	
51	956-636	TAPPING SCREW (W/WASHER) D4X25	3	
52	953-158	STRIKING GUIDE	1	
53	949-216	MACHINE SCREW M4X10 (10 PCS.)	3	
54	953-043	WASHER	2	
55	953-042	METAL	2	
56	995-586	IDLE PULLEY ASS'Y	1	INCLUD.55
57	949-453	SPRING WASHER M4 (10 PCS.)	5	
58	949-218	MACHINE SCREW M4X14 (10 PCS.)	5	
59	953-155	BELT COVER	1	
60	953-154	PULLEY (B)	1	
61A	322-591	GEAR COVER	1	
62	953-152	PINION	1	
63	935-522	METAL	1	
64	995-576	GEAR	1	
65	953-175	METAL D10X14X12	2	
66	953-161	WASHER	2	
67	995-577	SPRING	1	
68	939-542	RETAINING RING FOR D12 SHAFT (10 PCS.)	2	
69	995-587	SHAFT	1	
70	953-063	SPRING	1	
71	944-109	FEATHER KEY 3X3X8	1	
72A	995-585	FORK ASS'Y	1	INCLUD.70
73	954-004	TAPPING SCREW D4X16	5	
74	958-874	BELT	1	
75	995-580	SHOE PLATE	1	
76	995-579	SHOE CUSHION	1	
77	939-540	RETAINING RING FOR D10 SHAFT (10 PCS.)	1	
78	948-213	WASHER (B) D19	1	
79A	323-592	BODY ASS'Y	1	INCLUD.63,65
80	995-575	DRIVE PULLEY	1	

\*:ALTERNATIVE PARTS