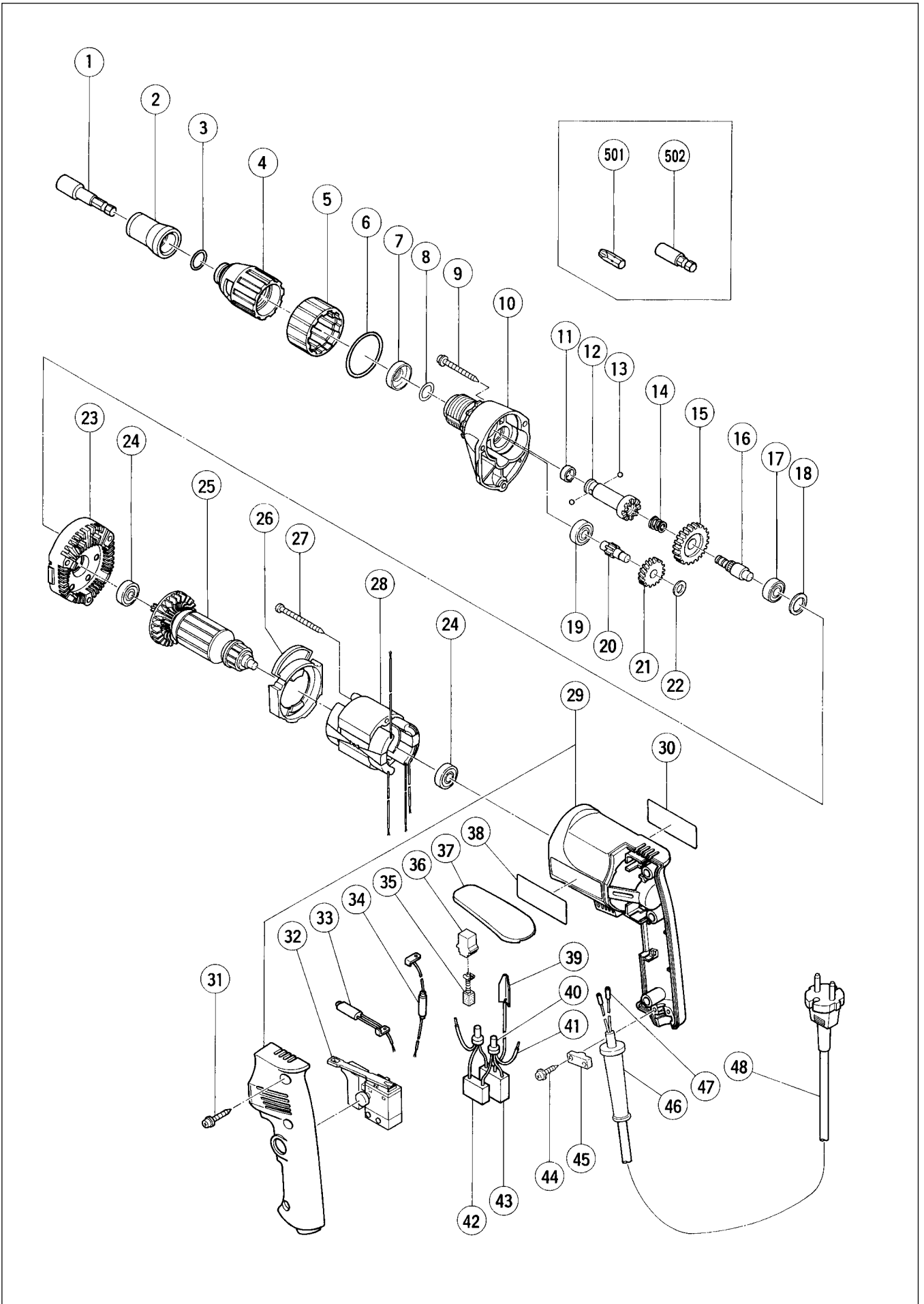


Assembly Diagram for W 8VB



PARTS

W 8VB

ITEM NO.	CODE NO.	DESCRIPTION	NO. USED	REMARKS		
*	1	985-321	MAGNETIC HEX. SOCKET 10MMX65L	1	FOR HOL,FIN,ESP,CHN	
*	1	985-322	MAGNETIC HEX. SOCKET 5/16"X65L	1	FOR AUS,NOR,USA	
*	2	317-670	SUB STOPPER (B) FOR H3/8,H10 HEX. SOCKET	1	FOR HOL,FIN,ESP,CHN	
*	2	317-671	SUB STOPPER (B) FOR H5/16 HEX. SOCKET	1	FOR AUS,NOR,USA	
*	2	317-672	SUB STOPPER (A) FOR BIT HOLDER (41L)	1	FOR FRG,FRA,HOL	
*	2	317-673	SUB STOPPER (C) FOR BIT HOLDER (75L)	1	FOR FRG	
*	2	317-899	SUB STOPPER (D) FOR HEX. SOCKET	1	FOR FRA	
	3	876-031	O-RING (S-16)	1		
	4	317-666	LOCATOR (A)	1		
	5	317-665	LOCK SLEEVE (A)	1		
	6	873-731	O-RING (S-28)	1		
	7	971-468	FRINGER (A)	1		
	8	317-662	O-RING (F)	1		
	9	306-664	TAPPING SCREW (W/FLANGE) D4X40	3		
	10	317-661	GEAR COVER ASS'Y	1	INCLUD.8,19	
	11	872-573	SET RING	1		
	12	317-664	SOCKET (B) ASS'Y	1	INCLUD.11,13	
	13	959-148	STEEL BALL D3.175 (10 PCS.)	2		
	14	306-024	SPRING	1		
	15	307-339	GEAR ASS'Y	1	INCLUD.16	
	16	307-340	GEAR SHAFT	1		
	17	608-VVM	BALL BEARING 608VVMC2EPS2L	1		
	18	987-641	WASHER (A)	1		
	19	608-VVM	BALL BEARING 608VVMC2EPS2L	1		
	20	317-887	SECOND PINION ASS'Y	1	INCLUD.21	
	21	317-772	FIRST GEAR	1		
	22	317-663	WASHER	1		
	23	317-660	INNER COVER ASS'Y	1	INCLUD.17,18	
	24	608-VVM	BALL BEARING 608VVMC2EPS2L	2		
*	25	360-492U	ARMATURE ASS'Y 115V	1	INCLUD.24	
*	25	360-492E	ARMATURE 220V-230V	1		
*	25	360-492F	ARMATURE 240V	1		
	26	305-398	FAN GUIDE (B)	1		
	27	950-515	TAPPING SCREW D4X50	2		
*	28	340-436C	STATOR 110V-115V	1		
*	28	340-436E	STATOR 220V-230V	1		
*	28	340-224F	STATOR 240V	1		
	29	317-659	HOUSING.HANDLE COVER SET	1		
	30		NAME PLATE	1		
	31	302-086	TAPPING SCREW (W/FLANGE) D4X20 (BLACK)	3		
*	32	314-916	SPEED CONTROL SWITCH (2P) 100V-115V	1	FOR USA	
*	32	314-921	SPEED CONTROL SWITCH (2P) 220V-240V	1		
*	33	317-668	INTERNAL WIRE (A)	1	EXCEPT FOR USA	
*	33	314-917	INTERNAL WIRE (B) (BLUE)	1	FOR USA	
*	34	317-669	INTERNAL WIRE (B)	1	EXCEPT FOR USA	
*	34	314-918	INTERNAL WIRE (B) (BROWN)	1	FOR USA	
	35	999-041	CARBON BRUSH (1 PAIR)	2		
	36	955-203	BRUSH HOLDER	2		
	37	317-676	HOOK (A)	1		
	38		HITACHI LABEL	1		
*	39	992-635	EARTH TERMINAL	1	FOR NOISE SUPPRESSOR	

