

# Hitachi Power Tools

LIST NO. G819

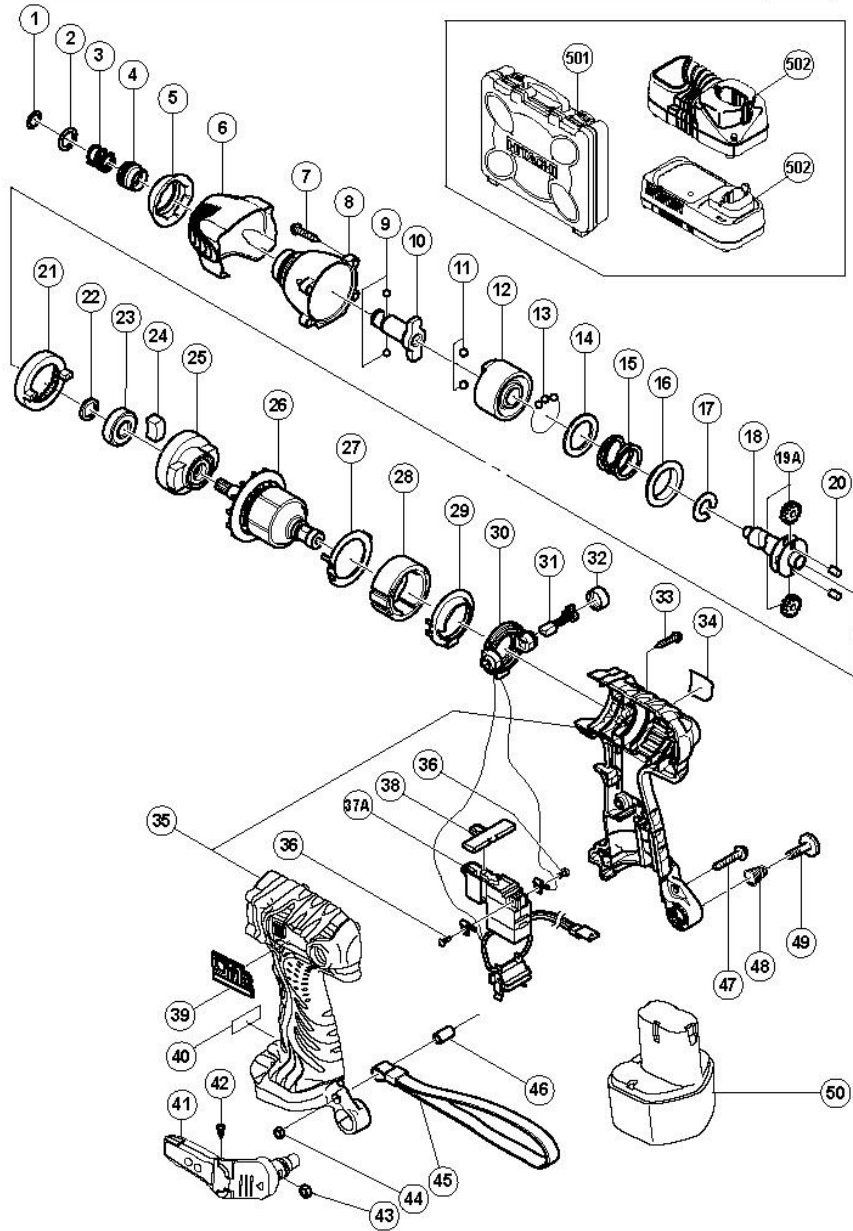
## ELECTRIC TOOL PARTS LIST

■ CORDLESS IMPACT DRIVER

2006 · 6 · 1

Model WH 9DMR

(E1-1)



## WH9DMR

Pos. Nr.	Art. Nr.	Beschreibung	Stueck	Kommentar	Beschreibung
1	315-984	WERKZEUGRING WH8DH/WH12DH WH12DM	1		RETAINING RING
2	315-983	UNTERLEGSCHIEBE (D) WH8DH/WH12DH WH12DM	1		WASHER (D)
3	321-657	Führungsfeder (A) WH12DM2	1		GUIDE SPRING (D)
4	322-717	Führungshülse (D) WH12DMR	1		GUIDE SLEEVE (D)
5	322-727	Vorderkappe (B) WH12DMR	1		FRONT CAP (B)
6	322-728	Schutzkappe (C) WH12DMR	1		PROTECTOR (C)
7	319-917	SCHNEIDSCHRAUBE D4X25 M U-SCHIEBE	4		TAPPING SCREW (W/SP. WASHER) D4X25(BLACK
8	321-674	Hammergehäuse WH12DM2	1		HAMMER CASE
9	319-535	STAHLKUGEL D3 5 (10STK)	2		STEEL BALL D3.5 (10 PCS.)
10	322-248	Amboss (F) WH12DM2	1		ANVIL (F)
10	322-724		1	"FOR KOR,TPE,SIN"	ANVIL (E)
11	959-154	STAHLKUGEL D5 556 (10ST)	2		STEEL BALL D5.556 (10 PCS.)
12	322-730	Hammer (F) WR9DM2	1		HAMMER (F)
13	959-148	STAHLKUGEL D3 175 (10ST) (ALTE ART NR 93	28		STEEL BALL D3.175 (10 PCS.)
14	315-978	UNTERLEGSCHIEBE (J) WH8DH/WH12DH/ WR12DH	1		WASHER (J)
15	320-407	Hammerfeder (A) WR9DM2	1		HAMMER SPRING (A)
16	316-172	UNTERLEGSCHIEBE (S) WH8DH/WH12DH/ WR12DH	1		WASHER (S)
17	316-171	STOPPER WH8DH/WH12DH/WR12DH WR12DM/WH12D	1		STOPPER
18	321-666	Spindel (D) WH12DM2	1		SPINDLE (D)
19A	321-667	Leerlaufzahnrad Set (2Stk) WH12DM2	2		IDLE GEAR SET (2 PCS.)
20	319-914	NADELROLLE WR12DM/WH12DM	2		NEEDLE ROLLER
21	320-877	Ringzahnrad WR14DM	1		RING GEAR (C)
22	319-911	UNTERLEGSCHIEBE (E) WR12DM WH12DM	1		WASHER (E)
					BALL

23	690-1VV	KUGELLAGER 6901VVCMP2L	1		BEARING 6901VVCMP2L
24	319-909	DAMPFER WR12DM/WH12DM	2		DAMPER
25	321-664	Innengehäuse (A) WH9DM2	1		INNER COVER (A)
26	360-702	Anker kpl WR9DMR	1		ARMATURE ASS'Y (W/BALL BEARING) DC 9.6V
27	322-719	Seitenbugel WH12DMR	1		SIDE YOKE
28	322-723	Magnet (E) WH12DMR	1		MAGNET (E)
29	322-720	Staubschutzabdeckung WH12DMR	1		DUST GUARD FIN (B)
30	321-662	Burstenblock WH9DM2	1		BRUSH BLOCK
31	999-054	KOHLLENBURSTEN (PAAR)	2		CARBON BRUSH 5X6X11.5 (1 PAIR)
32	319-918	BURSTENKAPPE WR12DM/WH12DM	2		BRUSH CAP
33	302-086	SCHNEIDSCHRAUBE D4X20 M FLANSCH (SCHWARZ)	7		TAPPING SCREW (W/FLANGE) D4X20 (BLACK)
34			1		NAME PLATE
35	324-287	Gehäuse A+B Set WR9DMR	1		HOUSING (A). (B) SET
36	994-532	#NAME?	2		MACHINE SCREW (W/SP. WASHER) M3X5
37A	324-829	DC-SPEED SCHALTER WR12DM/WH12DM	1		DC-SPEED CONTROL SWITCH
38	321-661	Druckknopf (A) WH9DM2	1		PUSHING BUTTON (A)
39	324-286		1		HITACHI PLATE
40			1		CAUTION PLATE (A)
40	000-008D		0	"FOR USA,CAN"	
41	321-918	Haken incl Beleuchtung WH12DM2	1	"INCLUD.42,43"	HOOK ASS'Y (W/LIGHT)
42	321-672	Schraube D2x6	2		TAPPING SCREW D2X6
43	320-	V-MUTTER M5 WR12DM/WH12DM	1		V-LOCK NUT

	288				M5
44	949-565	KLEMMUTTER M4 (10 ST )	1		LOCK NUT M4 (10 PCS.)
45	306-952	HALTESCHLAUFEDN10DY/DS10DV/WR14DH DS14/D	1		STRAP (BLACK)
46	322-718	Hulse (A) WH9DM2	1		SLEEVE (A)
47	324-278	Maschinenschraube M4x25	1		MACHINE SCREW (W/WASHERS) M4X25 (BLACK)
48	319-926	HAKENFEDER WR12DM/WH12DM	1		HOOK SPRING
49	319-927	SPEZIALSCHRAUBE M5 WR12DM WH12DM	1		SPECIAL SCREW M5
50	310-377		2		BATTERY EB 9B (EUROPE)
50	310-451		2	"FOR USA,CAN"	"BATTERY EB 9B (USA,CAN)"
50	324-288		2	FOR TPE	BATTERY EB 9B (W/ENGLISH N.P.)
50	323-225		2		BATTERY EB 926H (EUROPE)
50	318-368		2		"BATTERY EB 930H (AUS,NZL)"
501	322-070	Transportkoffer WH12DM2	1	EXCEPT FOR THA	CASE
502			1		CHARGER (MODEL UC 18YG)
502			1		CHARGER (MODEL UC 14YFA)
601	992-671		1		+ DRIVER BIT (B) NO.2 50L
602	992-672		1		+ DRIVER BIT (B) NO.3 50L
603	996-177	STECKSCHLUSSEL SW8X65L	1		NON-MAGNETIC HEX. SOCKET 8MM 65L
604	985-329		1		NON-MAGNETIC HEX. SOCKET 10MM 65L
605	996-178	STECKSCHLUSSEL SW12X65L Neue Art -Nr 75	1		NON-MAGNETIC HEX. SOCKET 12MM 65L

606	996-179		1		NON-MAGNETIC HEX. SOCKET 13MM 65L
607	996-180	STECKSCHLUSSEL SW14X65L	1		NON-MAGNETIC HEX. SOCKET 14MM 65L
608	996-181	STECKSCHLUSSEL SW16X65L	1		NON-MAGNETIC HEX. SOCKET 16MM 65L
609	996-182	STECKSCHLUSSEL SW17X110L Neue Art -Nr 7	1		NON-MAGNETIC HEX. SOCKET 17MM 65L
610	996-197	STECKSCHLUSSEL SW21X166L	1		HEX. SOCKET (LONG) 21MMX166L
611	321-823	Bohrfutter und Adaptersatz	1	INCLUD.612	DRILL CHUCK AND ADAPTER SET
612	307-543		1		CHUCK ADAPTER
613	309-922	FETT 500G FUR WF4DY/WR12DM WH12DM/WR14DH	1		GREASE FOR IMPACT DRIVER (500G)