

# Hitachi Power Tools

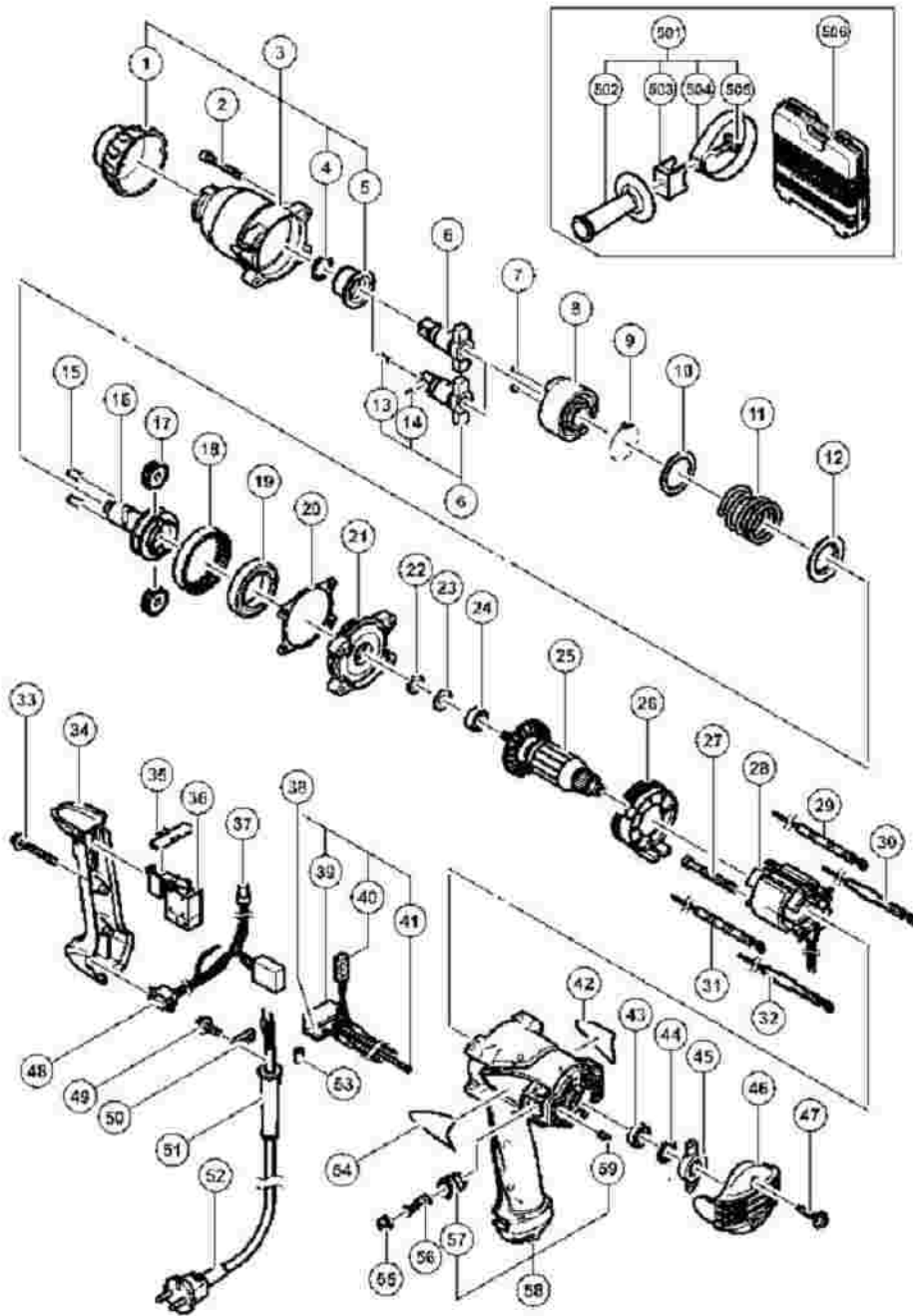
LIST NO. E706

## ELECTRIC TOOL PARTS LIST

■ IMPACT WRENCH  
Model WR 14VB

2004 · 12 · 30

(E1)



## WR14VB

Pos. Nr.	Art. Nr.	Beschreibung	Stueck	Kommentar
1	323-804		1	
2	324-060		4	
3	323-803		1	"INCLUD.1,4,5"
4	318-704	O-RING (M) WH14	1	
5	323-766		1	
6	323-773		1	"TYPE FOR W/O PLUNGER (A),PIN RETAINER(A
6	985-207	AMBOSS (B) KOMPL.M.KUGEL WH14/16	1	"INCLUD.13,14 TYPE FOR W/PLUNGER (A),"
006	000-008D		0	PIN RETAINER (A)
7	959-150	"STAHLKUGEL D6,35 (10ST)"	2	
8	323-789		1	
9	959-155	STAHLKUGELN D3.97 (10ST)	29	
10	317-525		1	
11	323-787		1	
12	317-521		1	
13	323-542		1	"FOR FRA,FRG,ITA,ESP"
14	323-541		1	"FOR FRA,FRG,ITA,ESP"
15	985-169	NADELROLLE WH14/16	2	
16	323-788		1	
17	323-785		2	
18	323-786		1	
19	690-7ZN		1	

20	324-076		1	
21	323-784		1	
22	323-781		1	
23	317-523		1	
24	608-DDM	KUGELLAGER 608DDM	1	
25	360-689C		1	
25	360-689E		1	
25	360-689F		1	
26	323-783		1	
27	981-824	SECHSKANTSCHNEIDSCHRAUBE D4X45	2	
28	340-607C		1	
28	340-607E		1	
28	340-607F		1	
29	323-799		1	"FOR VEN,INA,SYR,SIN,HKG,KUW"
30	323-791		1	"FOR NZL,HOL,BEL,FRA,FRG,ITA,ESP,AU"
31	323-800		1	"FOR VEN,INA,SYR,SIN,HKG,KUW"
32	323-792		1	"FOR NZL,HOL,BEL,FRA,FRG,ITA,ESP,AU"
33	303-694	SCHNEIDSCHRAUBE D4X35 M.FLANSCH	2	
34	323-802		1	
35	321-661		1	
	319-			

36	412	SCHALTER CL10SA	1	
36	317-532		1	FOR VEN
37	959-141	VERBINDER 50092 (10ST) DIV.TYPEN	1	
38	323-790		1	"INCLUD.39-41 FOR NZL,HOL,BEL,FRA,FRG,"
038	323-790		0	"ITA,ESP,AUT"
39	930-153	POLSTER (B) SELBSTKLEB. DIV.TYPEN	1	FOR NOISE SUPPRESSOR ASS'Y (W/RESISTOR)
40	316-186	POLSTER (B) VB13Y	1	FOR NOISE SUPPRESSOR ASS'Y (W/RESISTOR)
41	959-144	KABELSCHUH 50051 (10ST) DIV.TYPEN	1	FOR NOISE SUPPRESSOR ASS'Y (W/RESISTOR)
42			1	
43	608-VVM	KUGELLAGER 608 VVM	1	
44	985-198	GUMMISCHEIBE WH14/16	1	
45	323-754		1	
46	323-782		1	
47	301-653	SCHNEIDSCHRAUBE D4X20 MIT FLANSCH	2	
48	317-533		1	
49	984-750	SCHNEIDSCHRAUBE D4X16 MIT FLANSCH	2	
50	937-631	KABELKLEMME DIV.TYPEN	1	
51	953-327	KABELKNICKSCHUTZ D8.8 DIV.TYPEN	1	
51	938-051	KABELKNICKSCHUTZ D10.1 DIV.TYPEN	1	
	500-	ANSCHLUSSKABEL MIT		

52	247Z	STECKER	1	(CORD ARMOR D8.8)
52	500-423Z		1	"(CORD ARMOR D8.8) FOR SIN,KUV
52	500-201Z		1	(CORD ARMOR D10.1) FOR VEN
52	500-234Z	ANSCHLUSSKABEL MIT STECKER	1	(CORD ARMOR D8.8) FOR INA
52	500-245Z		1	(CORD ARMOR D10.1) FOR SYR
52	500-439Z		1	(CORD ARMOR D8.8) FOR NZL
52	500-435Z		1	(CORD ARMOR D8.8) FOR HKG
53	981-373	ADERENDHÜLSE (D) DIV.TYPEN	2	FOR CORD
54			1	
55	931-266	KOHLLENKAPPE G12SA/G13SB u.a.	2	
56	999-021	KOHLLENBÜRSTEN (PAAR)	2	
57	957-571	KOHLLENHALTER G12SA/G13SB u.a.	2	
58	323-801		1	"INCLUD.57,59"
59	938-477	INBUSSTIFTSCHRAUBE M5X8	2	
501	323-797		1	"INCLUD.502-505 FOR NZL,HOL,BEL,FRA,FRG,
501	323-797		0	"ITA,ESP,AUT"
502	980-901	SEITENGRIFF VRV16/DH20V/DH25V/PB	1	FOR SIDE HANDLE ASS'Y
503	323-775		1	FOR SIDE HANDLE ASS'Y
504	323-798		1	FOR SIDE HANDLE ASS'Y
505	980-903	SPEZIALSCHRAUBE M8 DH20V/DH25PB	1	FOR SIDE HANDLE ASS'Y
506	323-777		1	FOR ESP
601			1	
	000-			

601	008D		0	INCLUD.602-618
602	955-300		1	
603	955-301		3	
604	955-302		1	
605			1	
606	955-303		2	
607	955-304		2	
608	955-305		1	
609	955-306		1	
610	948-227	SICHERUNGSRING D47 INNEN	1	
611	955-307		1	
612	955-308		1	
613	955-309		1	
614	955-310		1	
615	955-311		1	
616	303-247		6	
617	873-537	SICHERUNGSSTIFT F.STECKNUSS MIT *	1	
618	873-187	SICHERUNGSRING F.STECKNUSS MIT *	1	
619	323-797		1	INCLUD.620-623
620	980-901	SEITENGRIF VRV16/DH20V/DH25V/PB	1	
621	980-903	SPEZIALSCHRAUBE M8 DH20V/DH25PB	1	

622	323-775		1	
623	323-798		1	
624	307-824	LEDERHALFTER (UNIVERSELL)	1	
625	971-042	FETT (100G) WH14/WH16/WH22	1	
626	873-633	KRAFTSTECKNUSS-VERLÄNGER.WH14/16	1	"INCLUD.628,629"
627	986-062	"GELENKADAPTER 1/2"" WH14/WH16"	1	"INCLUD.628,629"
628	873-537	SICHERUNGSSTIFT F.STECKNUSS MIT *	1	
629	873-187	SICHERUNGSRING F.STECKNUSS MIT *	1	
630	873-540	KRAFTSTECKNUSS 14MM WH14/WH16	1	"INCLUD.628,629"
631	873-536	KRAFTSTECKNUSS 17MM WH14/WH16	1	"INCLUD.628,629"
632	873-626	KRAFTSTECKNUSS 21MM WH14/WH16	1	"INCLUD.628,629"
633	873-627	KRAFTSTECKNUSS 22MM WH14/WH16	1	"INCLUD.628,629"
634	873-628	KRAFTSTECKNUSS 23MM WH14/WH16	1	"INCLUD.628,629"
635	873-629	KRAFTSTECKNUSS 24MM WH14/WH16	1	"INCLUD.628,629"
636	873-630	KRAFTSTECKNUSS 26MM WH14/WH16	1	"INCLUD.628,629"
637	985-195	"KRAFTSTECKNUSS 27MMX40L (1/2"")"	1	"INCLUD.628,629"
638	985-196	"KRAFTSTECKNUSS 30MMX50L (1/2"")"	1	"INCLUD.628,629"
	955-	KRAFTSTECKNUSS 12MM WH16		

639	138	WH 16	1	"INCLUD.628,629"
640	955-139	KRAFTSTECKNUSS 13MM WH16	1	"INCLUD.628,629"
641	955-140	KRAFTSTECKNUSS 14MM WH16	1	"INCLUD.628,629"
642	955-141	KRAFTSTECKNUSS 17MM WH16	1	"INCLUD.628,629"
643	955-149	KRAFTSTECKNUSS 17MM WH16 (L-75MM)	1	"INCLUD.628,629"
644	955-142	KRAFTSTECKNUSS 19MM WH16	1	"INCLUD.628,629"
645	955-150	KRAFTSTECKNUSS 19MM WH16 (L-75MM)	1	"INCLUD.628,629"
646	955-143	KRAFTSTECKNUSS 21MM WH16	1	"INCLUD.628,629"
647	955-151	KRAFTSTECKNUSS 21MM WH16 (L-75MM)	1	"INCLUD.628,629"
648	991-480		1	"INCLUD.628,629"
649	955-144	KRAFTSTECKNUSS 22MM WH16	1	"INCLUD.628,629"
650	955-146	KRAFTSTECKNUSS 24MM WH16	1	"INCLUD.628,629"
651	955-147	KRAFTSTECKNUSS 26MM WH16	1	"INCLUD.628,629"
652	985-197	"KRAFTSTECKNUSS 30MMX75L (1/2"")"	1	"INCLUD.628,629"
653	986-058		1	"INCLUD.628,629"
654	991-481		1	"INCLUD.628,629"



655	993-658		1	"INCLUD.628,629,656"
656	993-659		1	
657	992-613		1	"INCLUD.628,629,658"
658	992-614		1	
659	992-615		1	"INCLUD.628,629,660"
660	992-616		1	
661	955-153		1	