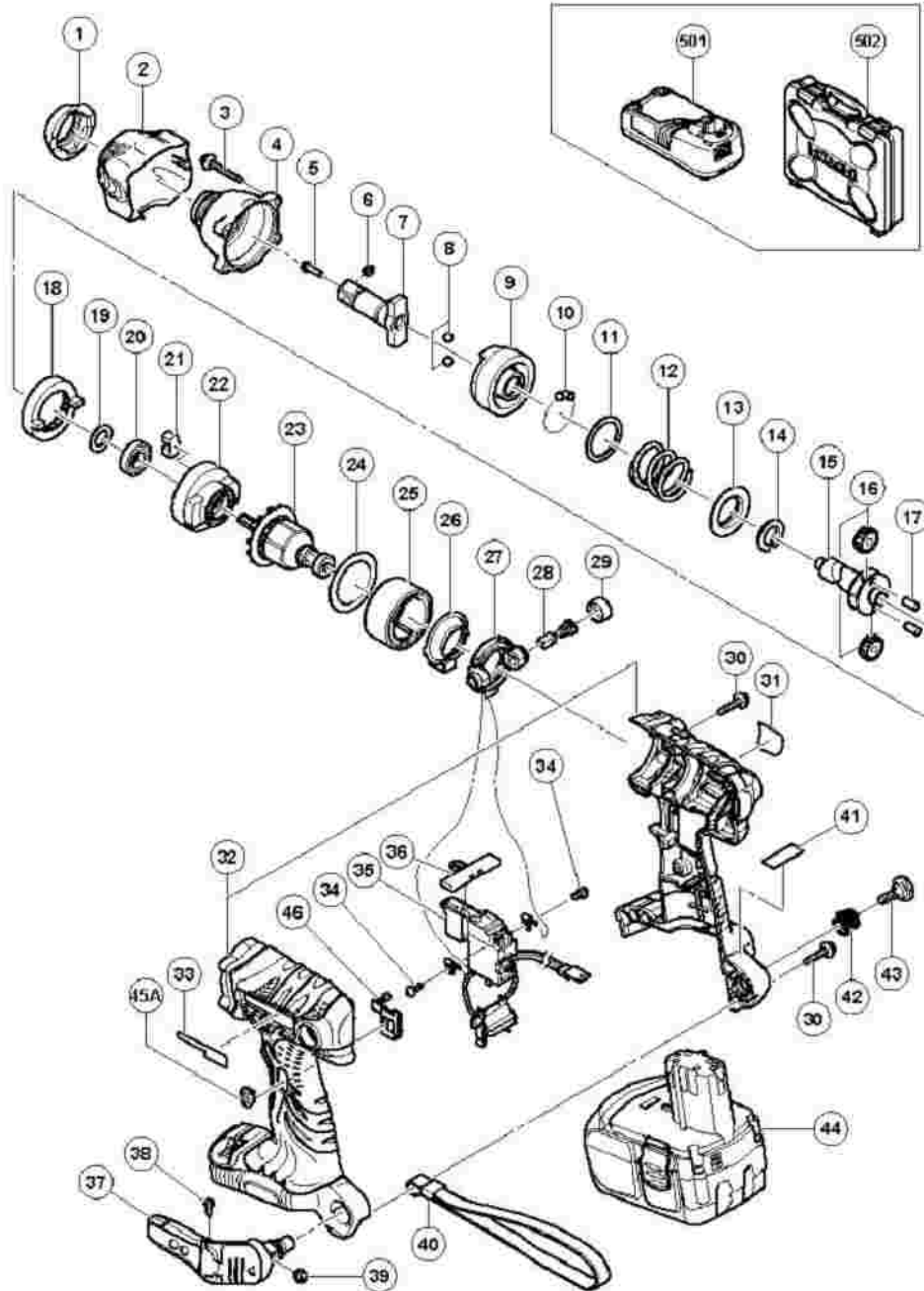


# Hitachi Power Tools

LIST NO. G850

## ELECTRIC TOOL PARTS LIST

■ CORDLESS IMPACT WRENCH 2006・11・17  
Model WR 18DL (E2)



## WR18DL

Pos. Nr.	Art. Nr.	Beschreibung	Stueck	Kommentar	
1	324-238	Vorderkappe (C) WH14DMR	1		FR
2	324-239	Schutzkappe (D) WH14DMR	1		PR
3	307-851	SCHNEIDSCHRAUBE D4X30 M FEDERING (SCHWAR	4		TA (W D4
4	324-250	Hammergehause WR14DMR	1		HA
5	324-257	Stiftsicherung WR14DMR	1		PI
6	324-256	Tauchkolben (B) WR14DMR	1		PL
7	324-255	Amboss (A) WR14DMR	1	"INCLUD.5,6"	AN
8	959-154	STAHLKUGEL D5 556 (10ST)	2		ST (10
9	324-218	Hammer WH14DMR	1		HA
10	959-148	STAHLKUGEL D3 175 (10ST) (ALTE ART NR 93	28		ST (10
11	315-978	UNTERLEGSSCHEIBE (J) WH8DH/WH12DH/WR12DH	1		W.
12	324-224	Hammerfeder (F) WH14DMR	1		HA (F)
13	316-172	UNTERLEGSSCHEIBE (S) WH8DH/WH12DH/WR12DH	1		W.
14	324-222	Stopper (B) WH14DMR	1		ST
15	324-232	Spindel WH14DMR	1		SP
16	321-667	Leerlaufzahnrad Set (2Stk) WH12DM2	2		ID PC
17	324-234	Nadelrolle (A) WH14DMR	2		NE (A
18	320-877	Ringzahnrad WR14DM	1		RI
19	319-911	UNTERLEGSSCHEIBE (E) WR12DM WH12DM	1		W.
20	690-1VV	KUGELLAGER 6901VVCMP2L	1		BA 69
21	324-230	Dampfer (A) WH14DMR	2		DA
	324-				

22	229	Innengehäuse (B) WH14DMR	1		IN
23	360-713	Anker & Ritzel kpl WH18DMR	1		AF PI
24	324-607	Seitenbugel (A) WH14DMR	1		SI
25	324-235	Magnet (A) WR14DMR	1	INCLUD.24	M.
26	324-228	Staubschutzabdeckung (B) WH14DMR	1		DU (B
27	324-226	Burstenblock kpl WH14DMR	1		BF
28	999-054	KOHLLENBURSTEN (PAAR)	2		CA 5X
29	319-918	BURSTENKAPPE WR12DM/WH12DM	2		BF
30	302-086	SCHNEIDSCHRAUBE D4X20 M FLANSCH (SCHWARZ	8		TA (W (B
31			1		NA
32	324-240	Gehäuse A+B Set WH18DMR	1		HC SE
32	327-051	Gehäuse A+B (18V / slow motion)	1	FOR SAVE MODE	HC SE
33	326-466		1		HI
34	994-532	#NAME?	2		M. (W M:
35	321-533	Schalter WR14DM	1		DC CC
36	324-225	Druckknopf (B) WH14DMR	1		PU (B
37	321-918	Haken incl Beleuchtung WH12DM2	1	"INCLUD.38,39"	HC (W
38	321-672	Schraube D2x6	2		TA D2
39	320-288	V-MUTTER M5 WR12DM/WH12DM	1		V-
40	306-952	HALTESCHLAUFEDN10DY/DS10DV/WR14DH DS14/D	1		ST
41			1		LA
42	319-926	HAKENFEDER WR12DM/WH12DM	1		HC
43	320-881	Spezial Schraube (A) M5 (WR14DM DS14D	1		SP M:
	326-				"B

44	240		2		18 (E)
44	326- 241		2		"B 18
45A	327- 053		1	FOR SAVE MODE	LE
46	327- 052		1	FOR SAVE MODE	LE
501			1		CF UC
502	323- 230	Plastikkoffer DS9DVB/DS12DVB/DS14DVB/DS9	1		CA
558	000- 008D		0	"INCLUD.556,557"	
558	000- 008D		0	"INCLUD.556,557"	
559	000- 008D		0	"FOR USA,CAN"	
601			1		CC AT AS
601	000- 008D		0	INCLUD.602-618	
602	955- 300		1		HC
603	955- 301		3		MI
604	955- 302		1		SP
605			1		HI
606	955- 303		2		BE
607	955- 304		2		NE BE 14
608	955- 305		1		CC
609	955- 306		1		NE (N
610	948- 227	SICHERUNGSRING D47 INNEN/DH30PC DH50SA1/	1		RE FC
611	955- 307		1		PI
612	955- 308		1		SL
613	955- 309		1		W.

614	955-310		1		SC
615	955-311		1		SC
616	303-247		6		SE SC M:
617	873-537		1		SC
618	873-187	SICHERUNGSRING F STECKNUSS MIT * AB 15MM	1		O-
619	991-481		1	"INCLUD.617,618"	FC AS
620	992-610	GELENKADAPTER 1/2 WH12D/WR12DH WR12DM/W	1	"INCLUD.617,618"	UN AS
621	955-153		1		UN PI
622	991-476	BIT-ADAPTER 1/2 AUF 1/4 Neue Art -Nr	1	"INCLUD.617,618"	BI AS
623	991-480		1	"INCLUD.617,618"	HE AS 21
624	944-291		1	"INCLUD.617,618"	HE AS
625	873-632	KRAFTSTECKNUSS 12MM WH14/WH16 WR12DM	1	"INCLUD.617,618"	HE AS
626	873-539	KRAFTSTECKNUSS 13MM WH14/WH16 WR12DM Neu	1	"INCLUD.617,618"	HE AS
627	873-540	KRAFTSTECKNUSS 14MM WH14/WH16 WR12DM	1	"INCLUD.617,618"	HE AS
628	873-536		1	"INCLUD.617,618"	HE AS
629	873-624		1	"INCLUD.617,618"	HE AS
630	873-626	KRAFTSTECKNUSS 21MM WH14/WH16 WR12DM	1	"INCLUD.617,618"	HE AS
631	873-627	KRAFTSTECKNUSS 22MM WH14/WH16 WR12DM	1	"INCLUD.617,618"	HE AS
632	986-058		1	"INCLUD.617,618"	HE PL 12
633	873-633	KRAFTSTECKNUSS-VERLANGER WH14/16 WR12DM	1	"INCLUD.617,618"	EX AS 12
634	955-151	KRAFTSTECKNUSS 21MM WH16 (L-75MM) WR12DM	1	"INCLUD.617,618"	HE AS 21

635	955-138	KRAFTSTECKNUSS 12MM WH16/WR12DM	1	"INCLUD.617,618"	HE AS 12
636	955-139	KRAFTSTECKNUSS 13MM WH16/WR12DM	1	"INCLUD.617,618"	HE AS 13
637	955-140	KRAFTSTECKNUSS 14MM WH16/WR12DM	1	"INCLUD.617,618"	HE AS 14
638	955-141	KRAFTSTECKNUSS 17MM WH16/WR12DM	1	"INCLUD.617,618"	HE AS 17
639	955-142	KRAFTSTECKNUSS 19MM WH16/WR12DM Neue Art	1	"INCLUD.617,618"	HE AS 19
640	955-149	KRAFTSTECKNUSS 17MM WH16 (L-75MM) WR12DM	1	"INCLUD.617,618"	HE AS 17
641	955-150		1	"INCLUD.617,618"	HE AS 19
642	955-143	KRAFTSTECKNUSS 21MM WH16/WR12DM	1	"INCLUD.617,618"	HE AS 21
643	955-144	KRAFTSTECKNUSS 22MM WH16/WR12DM	1	"INCLUD.617,618"	HE AS 22
644	992-613		1	"INCLUD.617,618,645"	SC DU
645	992-614		1		SC 13
646	992-615		1	"INCLUD.617,618,647"	SC DU
647	992-616		1		SC 14
648	993-658		1	"INCLUD.617,618,649"	SC DU
649	993-659		1		SC 12
650	309-922	FETT 500G FUR WF4DY/WR12DM WH12DM/WR14DH	1		GE IM (50